

ENSIGN

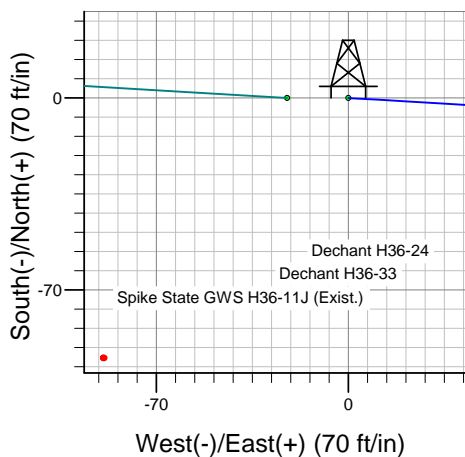
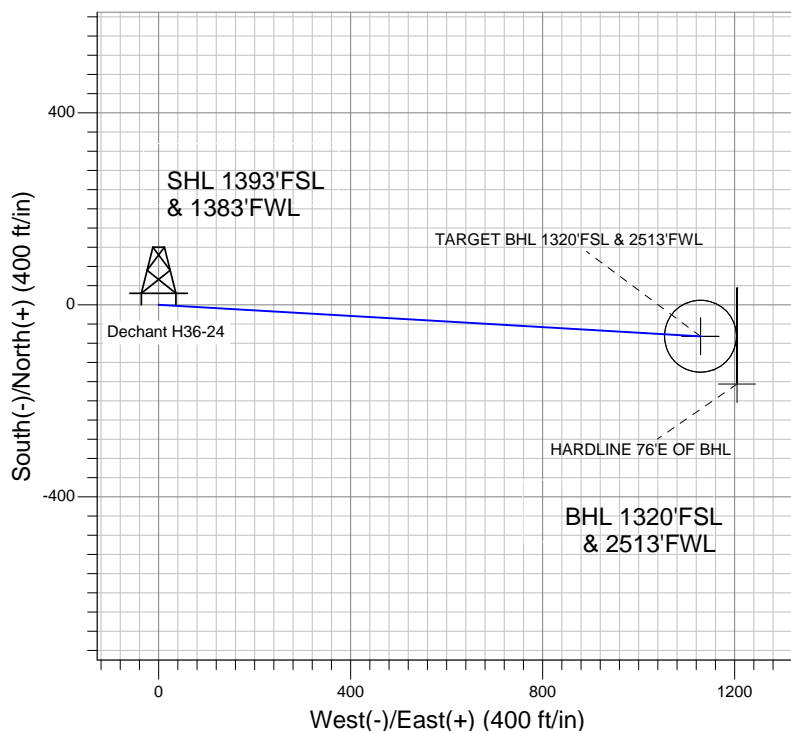
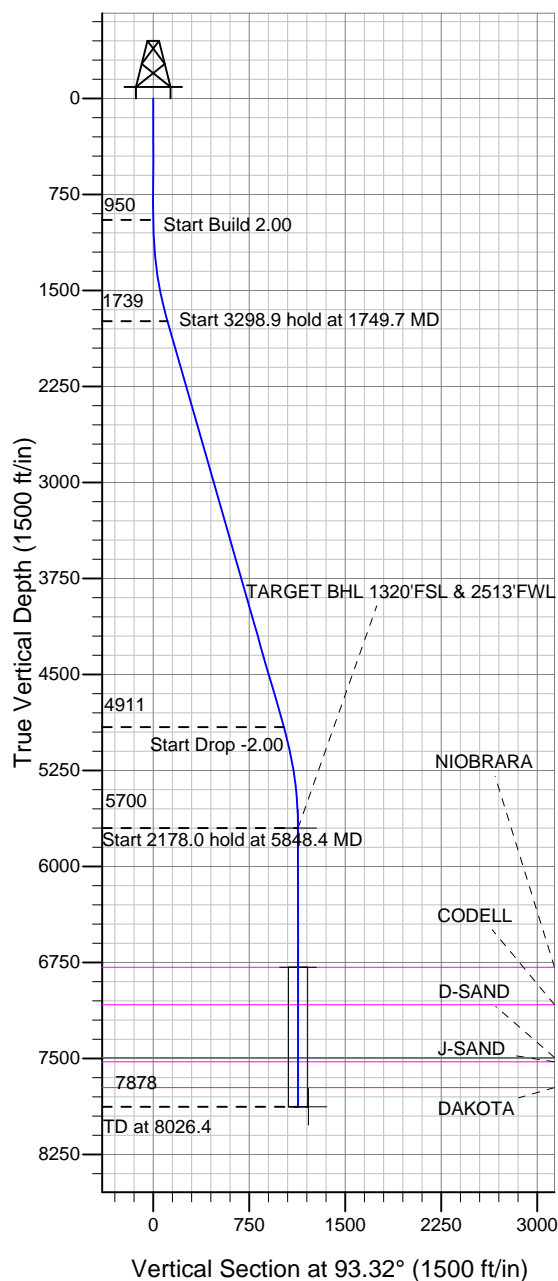
Directional

Well Name: Dechant H36-24

Surface Location: Dechant H36-33 Pad Sec.36-T3N-R65W
North American Datum 1983, US State Plane 1983 Colorado Northern Zone
Ground Elevation: 4824.0

+N/-S 0.0	+E/-W 0.0	Northing 1308964.88	Easting 3246812.02	Latitude 40.178130	Longitude -104.616690	Slot
		Original Well Elev WELL @ 4837.0ft (Original Well Elev)				

NOBLE ENERGY INC WELD COUNTY CO



Dechant H36-33 Pad Sec.36-T3N-R65W
Dechant H36-24
Noble Dechant H36-24 Plan #1 (12-1-11)
12:13, December 02 2011



Azimuths to True North
Magnetic North: 8.70°
Magnetic Field
Strength: 52981.9snT
Dip Angle: 66.88°
Date: 12/1/2011
Model: IGRF2010

WELLBORE TARGET DETAILS (LAT/LONG)

Name	TVD	+N/-S	+E/-W	Latitude	Longitude	Shape
TARGET BHL 1320'FSL & 2513'FWL	5700.0	-65.5	1128.9	40.177950	-104.612650	Point
TARGET CIRCLE 1320'FSL & 2513'FWL	6787.0	-65.5	1128.9	40.177950	-104.612650	Circle (Radius: 75.0)
HARDLINE 76'E OF BHL	7878.0	-165.5	1204.9	40.177676	-104.612378	Polygon

SECTION DETAILS

Sec	MD	Inc	Azi	TVD	+N/-S	+E/-W	DLeg	TFace	VSec	Target
1	0.0	0.00	0.00	0.0	0.0	0.0	0.00	0.00	0.0	
2	950.0	0.00	0.00	950.0	0.0	0.0	0.00	0.00	0.0	
3	1749.7	15.99	93.32	1739.4	-6.4	110.7	2.00	93.32	110.9	
4	5048.7	15.99	93.32	4910.6	-59.1	1018.2	0.00	0.00	1019.9	
5	5848.4	0.00	0.00	5700.0	-65.5	1128.9	2.00	180.00	1130.8	TARGET BHL 1320'FSL & 2513'FWL
6	8026.4	0.00	0.00	7878.0	-65.5	1128.9	0.00	0.00	1130.8	