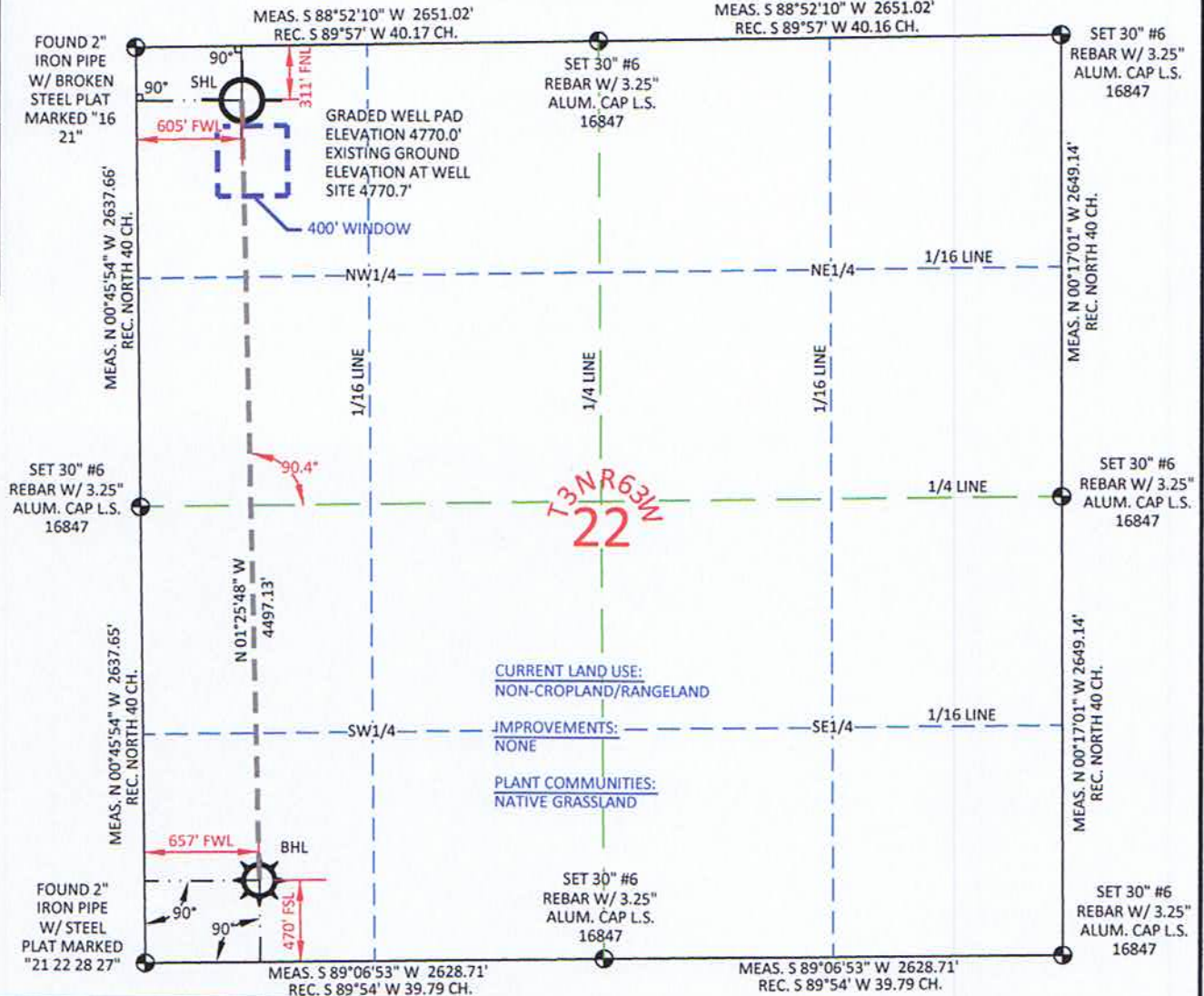


MARATHON FRENCH LAKE 3-63-22-1H
 LOCATED WITHIN THE NW1/4 NW1/4 SECTION 22 T3N R63W
 OF THE 6TH P.M., WELD COUNTY, COLORADO



CURRENT LAND USE:
 NON-CROPLAND/RANGELAND
 IMPROVEMENTS:
 NONE
 PLANT COMMUNITIES:
 NATIVE GRASSLAND

SURFACE HOLE LOCATION	
GEOGRAPHIC DEC. DEG.	LAT. 40.217246°
GEOGRAPHIC DEC. DEG.	LONG. 104.431005°
GEOGRAPHIC DEC. DEG.	LAT. 40.217265°
GEOGRAPHIC DEC. DEG.	LONG. 104.430494°
GEOGRAPHIC DEC. MIN. SEC.	LAT. 40°13'02.09"
GEOGRAPHIC DEC. MIN. SEC.	LONG. 104°25'51.62"
GEOGRAPHIC DEC. MIN. SEC.	LAT. 40°13'02.15"
GEOGRAPHIC DEC. MIN. SEC.	LONG. 104°25'49.78"
STATE PLANE CO. NORTH	NORTH 1323784.28
STATE PLANE CO. NORTH	EAST 3298521.44
STATE PLANE CO. NORTH	NORTH 323787.05
STATE PLANE CO. NORTH	EAST 2298671.97
FOOTAGE: 605' FWL - 311' FNL	
MEASURE DATE	02/02/2012
INSTRUMENT OPERATOR	ALLEN BLATTEL
PDOP	1.8
SHL GRND ELEV.	4770.7

BOTTOM HOLE LOCATION	
GEOGRAPHIC DEC. DEG.	LAT. 40.204902°
GEOGRAPHIC DEC. DEG.	LONG. 104.430798°
GEOGRAPHIC DEC. DEG.	LAT. 40.204921°
GEOGRAPHIC DEC. DEG.	LONG. 104.430286°
GEOGRAPHIC DEC. MIN. SEC.	LAT. 40°12'17.65"
GEOGRAPHIC DEC. MIN. SEC.	LONG. 104°25'50.87"
GEOGRAPHIC DEC. MIN. SEC.	LAT. 40°12'17.71"
GEOGRAPHIC DEC. MIN. SEC.	LONG. 104°25'49.03"
STATE PLANE CO. NORTH	NORTH 1319288.56
STATE PLANE CO. NORTH	EAST 3298633.67
STATE PLANE CO. NORTH	NORTH 319291.36
STATE PLANE CO. NORTH	EAST 2298784.24
FOOTAGE: 657' FWL - 470' FSL	
MEASURE DATE	02/02/2012
INSTRUMENT OPERATOR	ALLEN BLATTEL
PDOP	1.8
SHL GRND ELEV.	4770.7

I, Rodney A. Walters, Professional Land Surveyor, CO. RLS #16847 hereby certify that (in accordance with a request from Erin Bibeau with Marathon Oil Co, 5555 San Felipe, Houston, TX 77056) I and or personnel under my direction made a survey on the 2nd day of February 2012, for the Surface Hole Location and Elevation of Marathon Oil Co. FRENCH LAKE 3-63-22-1H being located within the NW 1/4 NW 1/4 Section 22, T3N R63W and the Bottom Hole Location being located in the SW 1/4 SW 1/4 of Section 22 T3N, R63W, both being of the 6th P.M., Weld County, State of Colorado.

- All bearings and distances are GRID, based on the Colorado State Plane Coordinate System, North Zone, North American Datum 1983 from GPS observations occupying a WHS control point (5/8" rebar) and having the Location and Elevation derived from an Opus Solution.
- Vertical Datum used is of NAVD 88.
- Record Bearings and Distances as shown are based on the General Land Office Survey plat approved on the 24th day of November 1868.



CONFIDENTIALITY NOTES:
 The information contained in this plat is legally privileged and confidential information intended only for the use of the recipients. If you are not the intended recipients, you are hereby notified that any use, dissemination, distribution or copying of this information is strictly prohibited.

WILLIAM H. SMITH & ASSOCIATES P.C.
 SURVEYING CONSULTANTS
 150 EAST SECOND NORTH GREEN RIVER, WY 82430
 PHONE: 307-875-3638
 www.whsmithpc.com

DRAWN BY: LAL	CHECKED BY: RAW
PROJECT NO: 363221H	JOB NO: 2011001
REVISIONS:	

- LEGEND**
- FOUND OR SET CORNER
 - ⊗ CALCULATED CORNER
 - NOTHING FOUND

LOCATION:
 FRENCH LAKE 3-63-22-1H
 WITHIN THE NW/4 NW/4 SECTION 22,
 T 3 N, R 63 W,
 6TH PM.
 WELD COUNTY,
 COLORADO

MARATHON OIL COMPANY
 PO BOX 3128, HOUSTON TX, 77253
 5555 SAN FELIPE, HOUSTON TX, 77056

WELL LOCATION PLAT

SCALE: 1"=1000'	EXHIBIT "A"
DATE: 2/7/2012	SHEET 1 OF 1