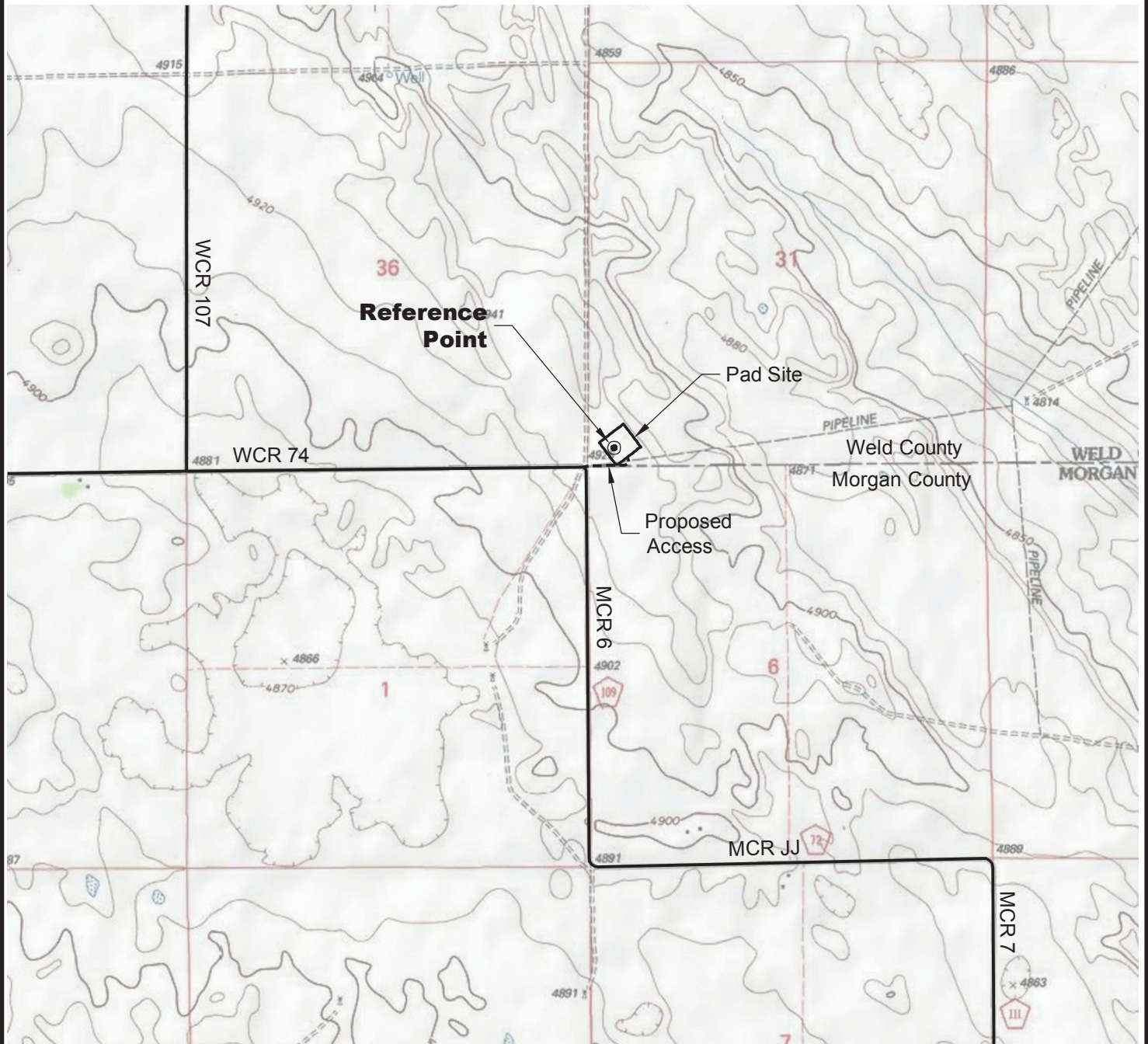


ACCESS ROAD MAP



DRIVING DIRECTIONS:

MP 0.0 - Intersection of Highway 14 a.k.a. WCR 90 & Highway 392 a.k.a. WCR 77 in Briggsdale; East on Highway 14
 MP 13.9 - Right on WCR 105; South along WCR 105
 MP 21.9 - Left on WCR 74; East along WCR 74
 MP 23.9 - End of WCR 74; MCR 6 on right (south); continue east on access to pad
 MP 24.0 - Ford Family Trust 2H Pad

2/2/12



North



Graphic Scale in Feet
 1" = 2000'



LAND SURVEYING AND MAPPING
 LAFAYETTE - WINTER PARK
 Ph 303 666 0379 Fx 303 665 6320

CONDOR ENERGY TECHNOLOGY LLC
 FORD FAMILY TRUST 2H PAD

LOT 4 SECTION 31 T7N R59W
 6th PM WELD COUNTY COLORADO