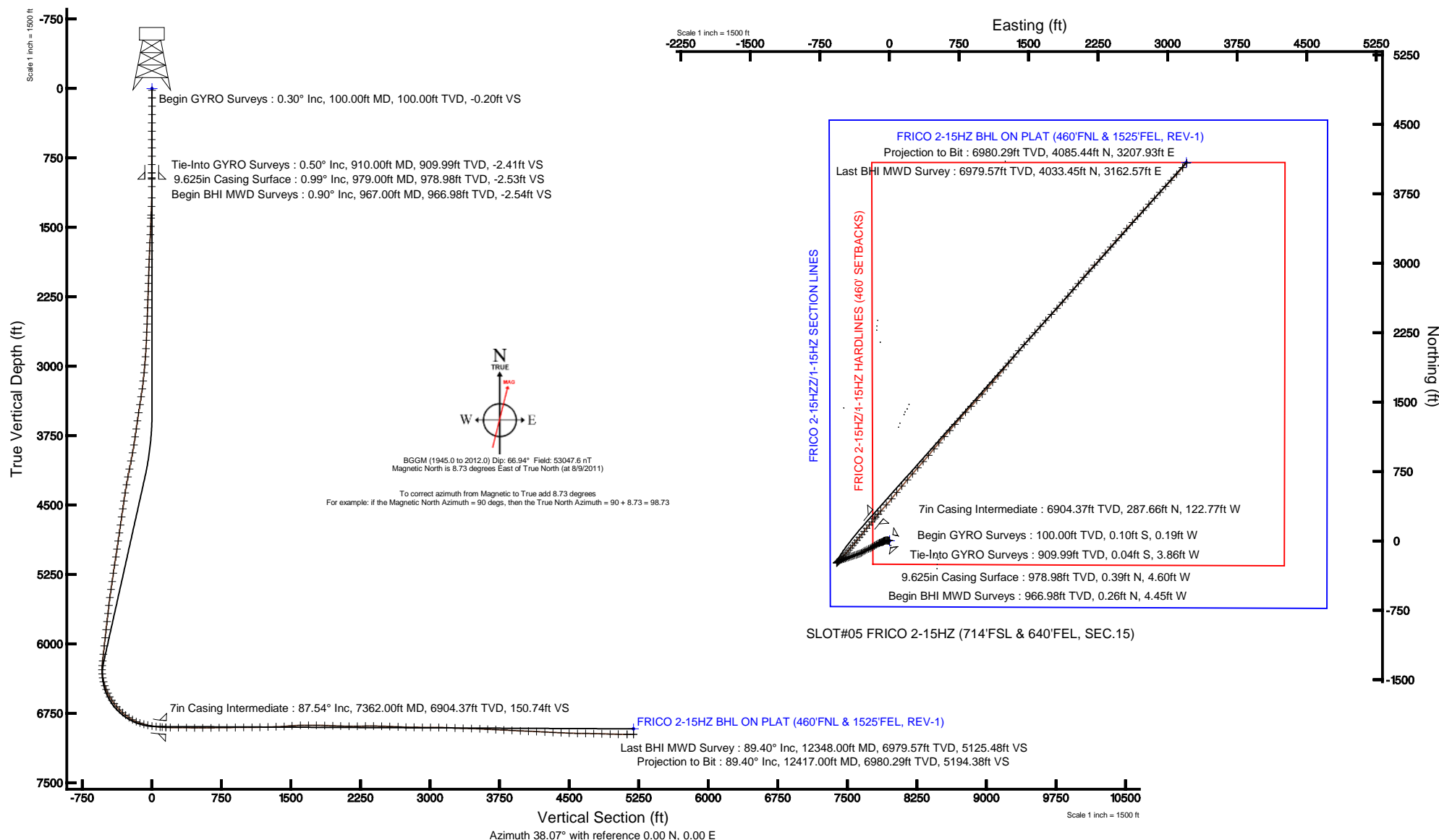


ANADARKO E&P COMPANY LP

Location: COLORADO Slot: SLOT#05 FRICO 2-15HZ (714'FSL & 640'FEL, SEC.15)
 Field: WELD COUNTY (KERR MCGEE) Well: FRICO 2-15HZ
 Facility: SEC.15-T3N-R65W Wellbore: FRICO 2-15HZ PWB

Plot reference wellpath is FRICO 2-15HZ (REV-A.0) PWP	
True vertical depths are referenced to XTREME 8 (RKB)	Grid System: NAD83 / Lambert Colorado SP, Northern Zone (501), US feet
Measured depths are referenced to XTREME 8 (RKB)	North Reference: True north
XTREME 8 (RKB) to Mean Sea Level: 4812 feet	Scale: True distance
Mean Sea Level to Mud line (At Slot: SLOT#05 FRICO 2-15HZ (714'FSL & 640'FEL, SEC.15)): 0 feet	Depths are in feet
Coordinates are in feet referenced to Slot	Created by: wilsje02 on 2/1/2012





Actual Wellpath Report

FRICO 2-15HZ AWP

Page 1 of 5



REFERENCE WELLPATH IDENTIFICATION

Operator	ANADARKO E&P COMPANY LP	Slot	SLOT#05 FRICO 2-15HZ (714'FSL & 640'FEL, SEC.15)
Area	COLORADO	Well	FRICO 2-15HZ
Field	WELD COUNTY (KERR MCGEE)	Wellbore	FRICO 2-15HZ AWB
Facility	SEC.15-T3N-R65W		

REPORT SETUP INFORMATION

Projection System	NAD83 / Lambert Colorado SP, Northern Zone (501), US feet	Software System	WellArchitect® 3.0.2
North Reference	True	User	Wilsjef02
Scale	0.999957	Report Generated	2/1/2012 at 10:45:43 AM
Convergence at slot	0.54° East	Database/Source file	WA_ANADARKO/FRICO_2-15HZ_AWB.xml

WELLPATH LOCATION

	Local coordinates		Grid coordinates		Geographic coordinates	
	North[ft]	East[ft]	Easting[US ft]	Northing[US ft]	Latitude	Longitude
Slot Location	-2322.01	135.99	3235383.22	1324152.84	40°13'12.454"N	104°39'25.463"W
Facility Reference Pt			3235225.19	1326473.35	40°13'35.400"N	104°39'27.216"W
Field Reference Pt			3197771.84	1268891.29	40°04'09.600"N	104°47'36.000"W

WELLPATH DATUM

Calculation method	Minimum curvature	XTREME 8 (RKB) to Facility Vertical Datum	4812.00ft
Horizontal Reference Pt	Slot	XTREME 8 (RKB) to Mean Sea Level	4812.00ft
Vertical Reference Pt	XTREME 8 (RKB)	XTREME 8 (RKB) to Mud Line at Slot (SLOT#05 FRICO 2-15HZ (714'FSL & 640'FEL, SEC.15))	4812.00ft
MD Reference Pt	XTREME 8 (RKB)	Section Origin	N 0.00, E 0.00 ft
Field Vertical Reference	Mean Sea Level	Section Azimuth	38.14°



Actual Wellpath Report

FRICO 2-15HZ AWP

Page 2 of 5



REFERENCE WELLPATH IDENTIFICATION

Operator	ANADARKO E&P COMPANY LP	Slot	SLOT#05 FRICO 2-15HZ (714'FSL & 640'FEL, SEC.15)
Area	COLORADO	Well	FRICO 2-15HZ
Field	WELD COUNTY (KERR MCGEE)	Wellbore	FRICO 2-15HZ AWB
Facility	SEC.15-T3N-R65W		

WELLPATH DATA (146 stations)

MD [ft]	Inclination [°]	Azimuth [°]	TVD [ft]	Vert Sect [ft]	North [ft]	East [ft]	Latitude	Longitude	DLS [°/100ft]	Comments
910.00	0.500	271.260	909.99	-2.41	-0.04	-3.86	40°13'12.454"N	104°39'25.513"W	0.15	Tie-Into GYRO Surveys
967.00	0.900	310.500	966.98	-2.54	0.26	-4.45	40°13'12.457"N	104°39'25.520"W	1.06	Begin BHI MWD Surveys
1059.00	1.600	306.800	1058.96	-2.54	1.50	-6.03	40°13'12.469"N	104°39'25.541"W	0.77	
1181.00	2.600	284.100	1180.88	-3.71	3.19	-10.07	40°13'12.486"N	104°39'25.593"W	1.05	
1274.00	3.100	269.700	1273.77	-6.13	3.69	-14.63	40°13'12.490"N	104°39'25.652"W	0.93	
1367.00	3.700	269.400	1366.60	-9.58	3.65	-20.15	40°13'12.490"N	104°39'25.723"W	0.65	
1399.00	3.700	270.500	1398.54	-10.85	3.65	-22.21	40°13'12.490"N	104°39'25.749"W	0.22	
1489.00	4.100	274.800	1488.33	-14.39	3.94	-28.32	40°13'12.493"N	104°39'25.828"W	0.55	
1579.00	4.000	267.900	1578.10	-18.19	4.09	-34.67	40°13'12.494"N	104°39'25.910"W	0.55	
1667.00	3.500	260.900	1665.91	-22.14	3.56	-40.39	40°13'12.489"N	104°39'25.984"W	0.77	
1756.00	3.100	255.300	1754.77	-26.06	2.52	-45.40	40°13'12.479"N	104°39'26.048"W	0.58	
1845.00	3.000	255.300	1843.64	-29.83	1.31	-49.98	40°13'12.467"N	104°39'26.107"W	0.11	
1932.00	2.500	259.300	1930.54	-33.07	0.38	-54.04	40°13'12.458"N	104°39'26.160"W	0.62	
2020.00	2.100	247.300	2018.47	-35.93	-0.59	-57.42	40°13'12.448"N	104°39'26.203"W	0.71	
2107.00	1.900	242.300	2105.42	-38.63	-1.88	-60.16	40°13'12.435"N	104°39'26.239"W	0.30	
2195.00	1.800	227.700	2193.37	-41.33	-3.49	-62.48	40°13'12.420"N	104°39'26.268"W	0.55	
2283.00	2.000	239.700	2281.32	-44.12	-5.19	-64.83	40°13'12.403"N	104°39'26.299"W	0.50	
2371.00	2.200	218.600	2369.27	-47.24	-7.29	-67.21	40°13'12.382"N	104°39'26.329"W	0.90	
2461.00	2.100	232.700	2459.20	-50.56	-9.64	-69.60	40°13'12.359"N	104°39'26.360"W	0.60	
2548.00	2.300	250.000	2546.14	-53.59	-11.20	-72.50	40°13'12.343"N	104°39'26.398"W	0.79	
2634.00	2.800	253.300	2632.05	-56.77	-12.39	-76.14	40°13'12.332"N	104°39'26.445"W	0.61	
2722.00	2.900	252.200	2719.95	-60.37	-13.69	-80.32	40°13'12.319"N	104°39'26.498"W	0.13	
2812.00	4.200	253.200	2809.77	-64.95	-15.34	-85.64	40°13'12.302"N	104°39'26.567"W	1.45	
2900.00	5.100	255.900	2897.48	-70.68	-17.22	-92.52	40°13'12.284"N	104°39'26.656"W	1.05	
2988.00	5.700	248.800	2985.09	-77.54	-19.76	-100.39	40°13'12.259"N	104°39'26.757"W	1.02	
3075.00	6.000	240.400	3071.64	-85.46	-23.57	-108.37	40°13'12.221"N	104°39'26.860"W	1.04	
3164.00	7.400	245.500	3160.03	-94.86	-28.24	-117.63	40°13'12.175"N	104°39'26.979"W	1.71	
3251.00	8.400	243.100	3246.20	-105.59	-33.44	-128.39	40°13'12.124"N	104°39'27.118"W	1.21	
3337.00	9.300	241.900	3331.18	-117.65	-39.55	-140.13	40°13'12.063"N	104°39'27.269"W	1.07	
3424.00	9.300	238.500	3417.04	-130.67	-46.54	-152.32	40°13'11.994"N	104°39'27.427"W	0.63	
3512.00	9.400	238.600	3503.87	-144.07	-54.00	-164.52	40°13'11.920"N	104°39'27.584"W	0.12	
3599.00	8.600	235.800	3589.79	-156.93	-61.36	-175.96	40°13'11.848"N	104°39'27.731"W	1.05	
3690.00	8.900	238.000	3679.74	-170.03	-68.91	-187.56	40°13'11.773"N	104°39'27.881"W	0.49	
3776.00	8.900	243.300	3764.70	-182.31	-75.43	-199.14	40°13'11.709"N	104°39'28.030"W	0.95	
3863.00	10.000	245.500	3850.52	-195.11	-81.58	-212.03	40°13'11.648"N	104°39'28.196"W	1.33	
3951.00	11.700	248.900	3936.94	-209.56	-87.96	-227.31	40°13'11.585"N	104°39'28.393"W	2.06	
4040.00	12.800	244.400	4023.92	-226.16	-95.47	-244.62	40°13'11.511"N	104°39'28.616"W	1.64	
4129.00	12.100	239.800	4110.83	-243.67	-104.42	-261.57	40°13'11.422"N	104°39'28.835"W	1.36	
4216.00	10.900	238.300	4196.08	-259.87	-113.33	-276.45	40°13'11.334"N	104°39'29.027"W	1.42	
4304.00	11.000	239.000	4282.48	-275.52	-122.03	-290.73	40°13'11.248"N	104°39'29.211"W	0.19	
4392.00	9.500	239.600	4369.07	-290.13	-130.03	-304.19	40°13'11.169"N	104°39'29.384"W	1.71	
4481.00	8.900	248.500	4456.93	-302.91	-136.27	-316.93	40°13'11.107"N	104°39'29.549"W	1.73	
4567.00	9.700	251.200	4541.80	-314.72	-141.04	-329.98	40°13'11.060"N	104°39'29.717"W	1.06	
4656.00	9.900	249.800	4629.50	-327.51	-146.10	-344.26	40°13'11.010"N	104°39'29.901"W	0.35	
4744.00	10.000	251.900	4716.18	-340.31	-151.09	-358.62	40°13'10.961"N	104°39'30.086"W	0.43	
4832.00	10.000	254.000	4802.84	-352.85	-155.57	-373.23	40°13'10.917"N	104°39'30.274"W	0.41	
4920.00	9.800	252.500	4889.53	-365.22	-159.92	-387.71	40°13'10.874"N	104°39'30.461"W	0.37	
5008.00	9.900	248.600	4976.23	-377.93	-164.94	-401.90	40°13'10.824"N	104°39'30.644"W	0.77	
5096.00	10.200	252.200	5062.88	-390.90	-170.08	-416.36	40°13'10.773"N	104°39'30.830"W	0.79	
5185.00	10.500	251.200	5150.44	-404.23	-175.10	-431.54	40°13'10.724"N	104°39'31.026"W	0.39	
5273.00	10.100	254.500	5237.02	-417.16	-179.75	-446.57	40°13'10.678"N	104°39'31.220"W	0.81	
5365.00	10.200	253.200	5327.58	-430.33	-184.26	-462.14	40°13'10.633"N	104°39'31.420"W	0.27	
5451.00	9.200	248.700	5412.35	-442.48	-188.96	-475.83	40°13'10.587"N	104°39'31.597"W	1.46	
5539.00	9.000	247.800	5499.24	-454.52	-194.11	-488.76	40°13'10.536"N	104°39'31.764"W	0.28	
5627.00	7.900	252.600	5586.29	-465.49	-198.52	-500.91	40°13'10.492"N	104°39'31.920"W	1.48	
5715.00	8.100	256.100	5673.43	-475.36	-201.82	-512.70	40°13'10.460"N	104°39'32.072"W	0.60	
5803.00	8.500	252.100	5760.51	-485.64	-205.31	-524.90	40°13'10.425"N	104°39'32.230"W	0.80	
5891.00	6.900	242.200	5847.72	-495.87	-209.77	-535.77	40°13'10.381"N	104°39'32.370"W	2.36	
5980.00	6.700	228.000	5936.10	-505.86	-215.74	-544.36	40°13'10.322"N	104°39'32.480"W	1.90	
6069.00	6.300	231.900	6024.53	-515.72	-222.23	-552.06	40°13'10.258"N	104°39'32.580"W	0.67	



Actual Wellpath Report

FRICO 2-15HZ AWP

Page 3 of 5



REFERENCE WELLPATH IDENTIFICATION

Operator	ANADARKO E&P COMPANY LP	Slot	SLOT#05 FRICO 2-15HZ (714°FSL & 640°FEL, SEC.15)
Area	COLORADO	Well	FRICO 2-15HZ
Field	WELD COUNTY (KERR MCGEE)	Wellbore	FRICO 2-15HZ AWB
Facility	SEC.15-T3N-R65W		

WELLPATH DATA (146 stations) † = interpolated/extrapolated station

MD [ft]	Inclination [°]	Azimuth [°]	TVD [ft]	Vert Sect [ft]	North [ft]	East [ft]	Latitude	Longitude	DLS [°/100ft]	Comments
6158.00	6.200	227.900	6113.00	-525.20	-228.46	-559.47	40°13'10.196"N	104°39'32.675"W	0.50	
6231.00	6.300	223.000	6185.56	-533.08	-234.03	-565.12	40°13'10.141"N	104°39'32.748"W	0.74	
6282.00	4.900	223.000	6236.32	-538.04	-237.67	-568.52	40°13'10.105"N	104°39'32.792"W	2.75	
6326.00	0.600	227.600	6280.26	-540.14	-239.20	-569.97	40°13'10.090"N	104°39'32.810"W	9.78	
6371.00	4.800	47.400	6325.21	-538.51	-238.09	-568.76	40°13'10.101"N	104°39'32.795"W	12.00	
6416.00	9.900	47.000	6369.83	-532.83	-234.17	-564.54	40°13'10.140"N	104°39'32.740"W	11.33	
6459.00	15.100	47.600	6411.79	-523.64	-227.87	-557.69	40°13'10.202"N	104°39'32.652"W	12.10	
6503.00	19.700	45.500	6453.77	-510.63	-218.80	-548.17	40°13'10.292"N	104°39'32.529"W	10.55	
6547.00	22.500	43.400	6494.82	-494.88	-207.49	-537.09	40°13'10.404"N	104°39'32.387"W	6.59	
6591.00	26.400	42.000	6534.86	-476.73	-194.09	-524.76	40°13'10.536"N	104°39'32.228"W	8.96	
6635.00	29.500	42.400	6573.73	-456.17	-178.82	-510.90	40°13'10.687"N	104°39'32.049"W	7.06	
6679.00	34.000	42.800	6611.13	-433.09	-161.79	-495.23	40°13'10.855"N	104°39'31.847"W	10.24	
6724.00	37.000	43.500	6647.76	-407.06	-142.73	-477.36	40°13'11.044"N	104°39'31.617"W	6.73	
6767.00	41.000	41.800	6681.17	-380.09	-122.82	-459.04	40°13'11.240"N	104°39'31.381"W	9.63	
6811.00	43.900	40.900	6713.64	-350.44	-100.52	-439.43	40°13'11.461"N	104°39'31.128"W	6.73	
6855.00	48.700	40.000	6744.03	-318.67	-76.32	-418.80	40°13'11.700"N	104°39'30.862"W	11.01	
6899.00	52.400	39.500	6771.98	-284.71	-50.20	-397.09	40°13'11.958"N	104°39'30.582"W	8.45	
6944.00	56.400	39.300	6798.17	-248.14	-21.93	-373.87	40°13'12.237"N	104°39'30.283"W	8.90	
6987.00	60.300	39.800	6820.73	-211.55	6.29	-350.56	40°13'12.516"N	104°39'29.982"W	9.12	
7032.00	65.600	40.300	6841.19	-171.51	36.95	-324.78	40°13'12.819"N	104°39'29.650"W	11.82	
7076.00	70.400	38.900	6857.67	-130.74	68.38	-298.79	40°13'13.130"N	104°39'29.315"W	11.30	
7120.00	75.100	38.000	6870.71	-88.73	101.28	-272.67	40°13'13.455"N	104°39'28.978"W	10.86	
7165.00	78.900	38.200	6880.83	-44.89	135.78	-245.62	40°13'13.796"N	104°39'28.629"W	8.46	
7210.00	79.800	38.600	6889.15	-0.67	170.44	-218.15	40°13'14.138"N	104°39'28.275"W	2.18	
7255.00	83.200	38.600	6895.80	43.83	205.22	-190.39	40°13'14.482"N	104°39'27.917"W	7.56	
7298.00	84.600	39.200	6900.37	86.58	238.49	-163.54	40°13'14.811"N	104°39'27.571"W	3.54	
7320.00	86.300	39.400	6902.11	108.50	255.46	-149.65	40°13'14.978"N	104°39'27.392"W	7.78	
7362.00†	87.541	40.308	6904.37	150.42	287.66	-122.77	40°13'15.297"N	104°39'27.046"W	3.66	7" Casing Point
7408.00	88.900	41.300	6905.80	196.35	322.46	-92.73	40°13'15.641"N	104°39'26.658"W	3.66	
7495.00	90.500	42.000	6906.25	283.18	387.46	-34.91	40°13'16.283"N	104°39'25.913"W	2.01	
7583.00	88.100	39.200	6907.33	371.08	454.26	22.34	40°13'16.943"N	104°39'25.175"W	4.19	
7671.00	89.400	39.700	6909.25	459.03	522.20	78.24	40°13'17.614"N	104°39'24.454"W	1.58	
7759.00	90.600	39.400	6909.25	547.00	590.05	134.27	40°13'18.285"N	104°39'23.732"W	1.41	
7849.00	90.400	41.000	6908.46	636.94	658.78	192.36	40°13'18.964"N	104°39'22.983"W	1.79	
7936.00	90.900	40.800	6907.47	723.83	724.54	249.32	40°13'19.614"N	104°39'22.249"W	0.62	
8022.00	90.700	41.000	6906.27	809.72	789.54	305.62	40°13'20.256"N	104°39'21.523"W	0.33	
8110.00	90.500	40.800	6905.35	897.62	856.05	363.24	40°13'20.913"N	104°39'20.780"W	0.32	
8200.00	89.700	40.500	6905.20	987.53	924.33	421.87	40°13'21.588"N	104°39'20.024"W	0.95	
8290.00	90.900	39.500	6904.72	1077.48	993.27	479.71	40°13'22.269"N	104°39'19.279"W	1.74	
8376.00	91.400	39.600	6903.00	1163.43	1059.57	534.46	40°13'22.925"N	104°39'18.573"W	0.59	
8464.00	92.500	41.900	6900.00	1251.29	1126.19	591.87	40°13'23.583"N	104°39'17.833"W	2.90	
8552.00	90.500	40.100	6897.70	1339.14	1192.58	649.57	40°13'24.239"N	104°39'17.089"W	3.06	
8639.00	95.100	41.100	6893.45	1425.93	1258.54	706.11	40°13'24.891"N	104°39'16.360"W	5.41	
8725.00	94.000	40.900	6886.63	1511.55	1323.24	762.35	40°13'25.530"N	104°39'15.635"W	1.30	
8814.00	91.400	42.400	6882.44	1600.27	1389.66	821.43	40°13'26.186"N	104°39'14.873"W	3.37	
8901.00	89.300	43.000	6881.91	1686.99	1453.59	880.42	40°13'26.818"N	104°39'14.113"W	2.51	
8988.00	90.700	42.400	6881.91	1773.71	1517.53	939.42	40°13'27.450"N	104°39'13.352"W	1.75	
9078.00	87.300	41.700	6883.48	1863.48	1584.34	999.68	40°13'28.110"N	104°39'12.575"W	3.86	
9164.00	87.400	41.200	6887.45	1949.24	1648.73	1056.55	40°13'28.746"N	104°39'11.842"W	0.59	
9251.00	89.000	40.600	6890.18	2036.09	1714.45	1113.48	40°13'29.396"N	104°39'11.108"W	1.96	
9339.00	89.100	40.000	6891.64	2124.02	1781.56	1170.39	40°13'30.059"N	104°39'10.374"W	0.69	
9429.00	90.400	39.300	6892.04	2213.98	1850.85	1227.82	40°13'30.744"N	104°39'09.634"W	1.64	
9517.00	92.100	39.600	6890.12	2301.94	1918.78	1283.72	40°13'31.415"N	104°39'08.913"W	1.96	
9605.00	88.800	39.200	6889.43	2389.90	1986.77	1339.56	40°13'32.087"N	104°39'08.193"W	3.78	
9693.00	88.300	40.700	6891.65	2477.83	2054.21	1396.05	40°13'32.753"N	104°39'07.465"W	1.80	
9781.00	88.000	41.100	6894.49	2565.68	2120.69	1453.64	40°13'33.410"N	104°39'06.722"W	0.57	
9869.00	87.700	41.800	6897.79	2653.47	2186.60	1511.85	40°13'34.061"N	104°39'05.972"W	0.86	
9956.00	87.400	41.900	6901.51	2740.21	2251.35	1569.84	40°13'34.701"N	104°39'05.224"W	0.36	
10044.00	90.600	42.000	6903.05	2827.99	2316.78	1628.65	40°13'35.348"N	104°39'04.466"W	3.64	
10132.00	88.700	42.300	6903.59	2915.77	2382.02	1687.70	40°13'35.992"N	104°39'03.705"W	2.19	



Actual Wellpath Report

FRICO 2-15HZ AWP

Page 4 of 5



REFERENCE WELLPATH IDENTIFICATION

Operator	ANADARKO E&P COMPANY LP	Slot	SLOT#05 FRICO 2-15HZ (714'FSL & 640'FEL, SEC.15)
Area	COLORADO	Well	FRICO 2-15HZ
Field	WELD COUNTY (KERR MCGEE)	Wellbore	FRICO 2-15HZ AWB
Facility	SEC.15-T3N-R65W		

WELLPATH DATA (146 stations)

MD [ft]	Inclination [°]	Azimuth [°]	TVD [ft]	Vert Sect [ft]	North [ft]	East [ft]	Latitude	Longitude	DLS [°/100ft]	Comments
10220.00	89.200	42.800	6905.20	3003.49	2446.83	1747.20	40°13'36.633"N	104°39'02.937"W	0.80	
10310.00	90.700	41.900	6905.28	3093.24	2513.34	1807.83	40°13'37.290"N	104°39'02.156"W	1.94	
10397.00	87.500	41.000	6906.64	3180.08	2578.54	1865.40	40°13'37.934"N	104°39'01.413"W	3.82	
10487.00	87.300	40.600	6910.73	3269.89	2646.60	1924.15	40°13'38.607"N	104°39'00.656"W	0.50	
10574.00	88.500	39.800	6913.92	3356.77	2713.00	1980.26	40°13'39.263"N	104°38'59.932"W	1.66	
10663.00	88.300	40.000	6916.40	3445.69	2781.25	2037.33	40°13'39.937"N	104°38'59.197"W	0.32	
10753.00	87.200	41.400	6919.93	3535.53	2849.43	2095.97	40°13'40.611"N	104°38'58.440"W	1.98	
10839.00	87.000	40.700	6924.28	3621.31	2914.20	2152.38	40°13'41.251"N	104°38'57.713"W	0.85	
10927.00	87.600	42.700	6928.43	3709.04	2979.83	2210.85	40°13'41.899"N	104°38'56.959"W	2.37	
11015.00	86.500	42.000	6932.96	3796.68	3044.78	2270.05	40°13'42.541"N	104°38'56.196"W	1.48	
11103.00	87.300	41.500	6937.72	3884.38	3110.33	2328.56	40°13'43.189"N	104°38'55.441"W	1.07	
11191.00	87.500	41.500	6941.71	3972.13	3176.17	2386.81	40°13'43.840"N	104°38'54.690"W	0.23	
11280.00	87.500	41.000	6945.59	4060.92	3243.02	2445.44	40°13'44.500"N	104°38'53.934"W	0.56	
11368.00	87.500	41.300	6949.43	4148.71	3309.22	2503.29	40°13'45.154"N	104°38'53.188"W	0.34	
11457.00	86.800	41.400	6953.86	4237.46	3375.95	2562.02	40°13'45.814"N	104°38'52.431"W	0.79	
11546.00	87.100	41.900	6958.59	4326.17	3442.36	2621.08	40°13'46.470"N	104°38'51.670"W	0.65	
11633.00	87.400	42.900	6962.77	4412.83	3506.53	2679.68	40°13'47.104"N	104°38'50.914"W	1.20	
11721.00	88.000	42.200	6966.30	4500.50	3571.30	2739.14	40°13'47.744"N	104°38'50.147"W	1.05	
11811.00	89.000	41.600	6968.65	4590.27	3638.27	2799.22	40°13'48.406"N	104°38'49.373"W	1.30	
11898.00	89.200	43.200	6970.02	4677.01	3702.50	2857.87	40°13'49.040"N	104°38'48.616"W	1.85	
11986.00	89.200	42.500	6971.25	4764.71	3767.01	2917.72	40°13'49.678"N	104°38'47.845"W	0.80	
12074.00	88.300	43.500	6973.17	4852.37	3831.36	2977.72	40°13'50.313"N	104°38'47.071"W	1.53	
12164.00	87.900	43.100	6976.15	4941.95	3896.82	3039.40	40°13'50.960"N	104°38'46.275"W	0.63	
12253.00	89.200	42.000	6978.40	5030.66	3962.36	3099.57	40°13'51.608"N	104°38'45.500"W	1.91	
12348.00	89.400	41.100	6979.57	5125.48	4033.45	3162.57	40°13'52.310"N	104°38'44.687"W	0.97	Last BHI MWD Survey
12417.00	89.400	41.100	6980.29	5194.39	4085.44	3207.93	40°13'52.824"N	104°38'44.102"W	0.00	Projection to Bit

HOLE & CASING SECTIONS - Ref Wellbore: FRICO 2-15HZ AWB Ref Wellpath: FRICO 2-15HZ AWP

String/Diameter	Start MD [ft]	End MD [ft]	Interval [ft]	Start TVD [ft]	End TVD [ft]	Start N/S [ft]	Start E/W [ft]	End N/S [ft]	End E/W [ft]
13.5in Open Hole	17.00	979.00	962.00	17.00	978.98	0.00	0.00	0.39	-4.60
9.625in Casing Surface	17.00	979.00	962.00	17.00	978.98	0.00	0.00	0.39	-4.60
8.75in Open Hole	979.00	7370.00	6391.00	978.98	6904.70	0.39	-4.60	293.74	-117.59
7in Casing Intermediate	17.00	7362.00	7345.00	17.00	6904.37	0.00	0.00	287.66	-122.77
6.125in Open Hole	7362.00	12417.00	5055.00	6904.37	6980.29	287.66	-122.77	4085.44	3207.93

TARGETS

Name	MD [ft]	TVD [ft]	North [ft]	East [ft]	Grid East [US ft]	Grid North [US ft]	Latitude	Longitude	Shape
FRICO 2-15HZ/1-15HZ SECTION LINES		0.00	0.00	0.00	3235383.22	1324152.84	40°13'12.454"N	104°39'25.463"W	polygon
FRICO 2-15HZ BHL ON PLAT (460'FNL & 1525'FEL, REV-1)		6920.00	4088.68	3202.92	3238546.98	1328271.59	40°13'52.856"N	104°38'44.167"W	point
FRICO 2-15HZ/1-15HZ HARDLINES (460' SETBACKS)		6920.00	0.00	0.00	3235383.22	1324152.84	40°13'12.454"N	104°39'25.463"W	polygon

WELLPATH COMPOSITION - Ref Wellbore: FRICO 2-15HZ AWB Ref Wellpath: FRICO 2-15HZ AWP

Start MD [ft]	End MD [ft]	Positional Uncertainty Model	Log Name/Comment	Wellbore
17.00	910.00	Gyrodatta standard - Continuous gyro	GYRO SURVEYS <17-910>	FRICO 2-15HZ AWB
910.00	7320.00	NaviTrak (Standard)	BHI MWD SURVEYS 8 3/4" HOLE <967-7320>	FRICO 2-15HZ AWB
7320.00	12348.00	NaviTrak (Standard)	BHI MWD SURVEYS 6 1/8" HOLE <7408-12348>	FRICO 2-15HZ AWB
12348.00	12417.00	Blind Drilling (std)	Projection to bit	FRICO 2-15HZ AWB



Actual Wellpath Report

FRICO 2-15HZ AWP

Page 5 of 5



REFERENCE WELLPATH IDENTIFICATION

Operator	ANADARKO E&P COMPANY LP	Slot	SLOT#05 FRICO 2-15HZ (714'FSL & 640'FEL, SEC.15)
Area	COLORADO	Well	FRICO 2-15HZ
Field	WELD COUNTY (KERR MCGEE)	Wellbore	FRICO 2-15HZ AWB
Facility	SEC.15-T3N-R65W		

WELLPATH COMMENTS

MD [ft]	Inclination [°]	Azimuth [°]	TVD [ft]	Comment
100.00	0.300	242.360	100.00	Begin GYRO Surveys
910.00	0.500	271.260	909.99	Tie-Into GYRO Surveys
967.00	0.900	310.500	966.98	Begin BHI MWD Surveys
7362.00	87.541	40.308	6904.37	7" Casing Point
12348.00	89.400	41.100	6979.57	Last BHI MWD Survey
12417.00	89.400	41.100	6980.29	Projection to Bit