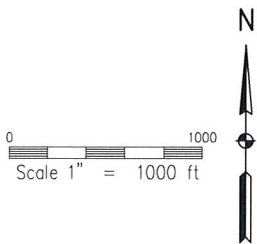
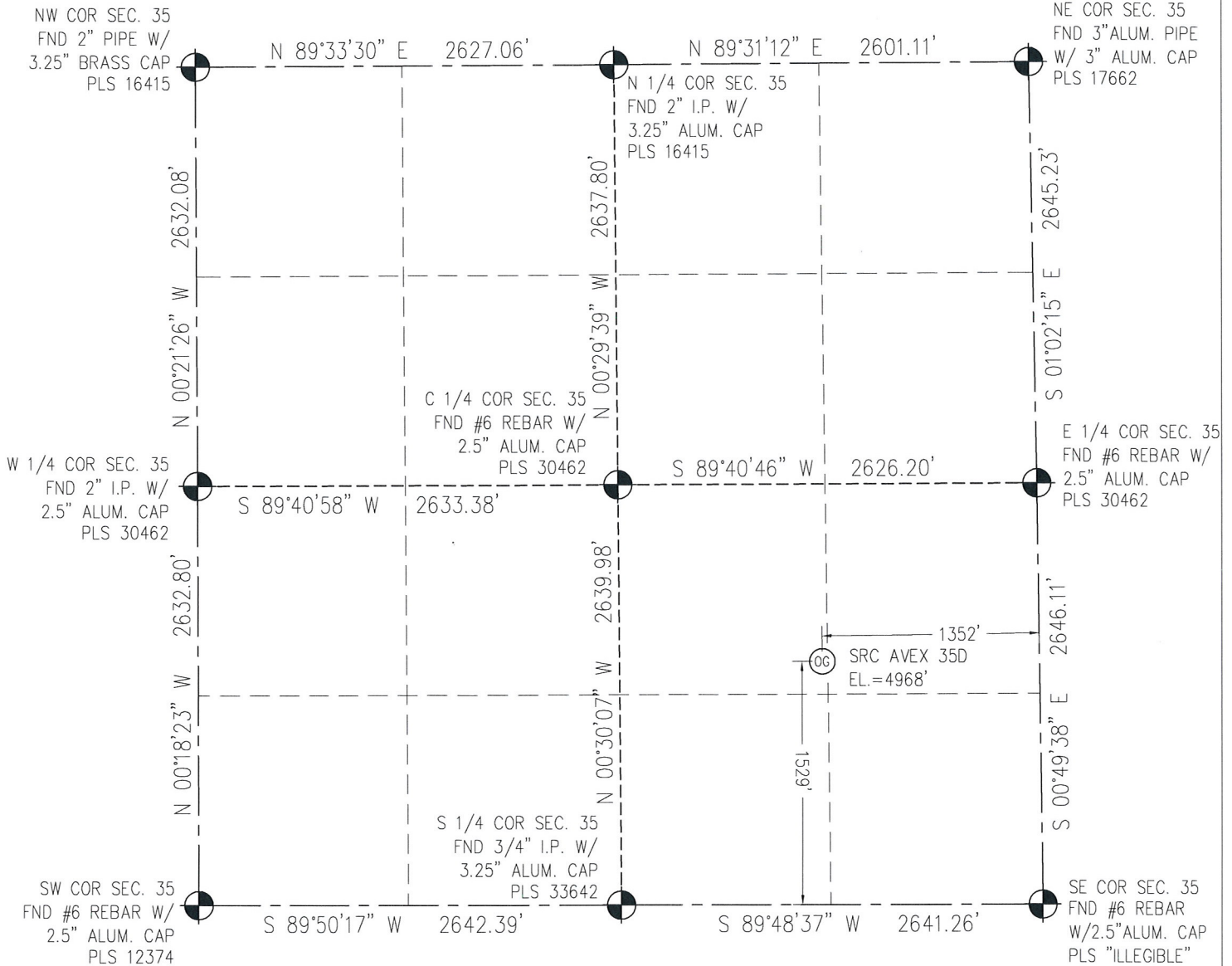


# WELL LOCATION CERTIFICATE

THIS MAP DOES NOT REPRESENT A BOUNDARY SURVEY

SECTION 35  
TOWNSHIP 5 NORTH  
RANGE 68 WEST



IN ACCORDANCE WITH A REQUEST FROM CRAIG RASMUSON - SYNERGY RESOURCES, BASELINE ENGINEERING CORP. HAS DETERMINED THE LOCATION OF THE SRC AVEX 35D TO BE 1529' FSL, 1352' FEL, AS MEASURED AT NINETY (90) DEGREES FROM THE SECTION LINE OF SECTION 35, TOWNSHIP 5 NORTH, RANGE 68 WEST, 6TH PRINCIPAL MERIDIAN, LARIMER COUNTY, COLORADO.

I HEREBY CERTIFY THAT THIS WELL LOCATION CERTIFICATE WAS PREPARED BY ME, OR UNDER MY DIRECT SUPERVISION, THAT THE FIELD WORK WAS COMPLETED ON 11/13/2009, THAT IT IS NOT A LAND SURVEY PLAT OR AN IMPROVEMENT SURVEY PLAT, AND THAT IT IS NOT TO BE RELIED UPON FOR ESTABLISHMENT OF FENCE, BUILDING, OR OTHER FUTURE IMPROVEMENT LINES.

LATITUDE & LONGITUDE (NAD 83 SURFACE HOLE):  
LATITUDE: N 40.353347°  
LONGITUDE: W 104.969410°  
PDOP: 1.3  
1/4, 1/4: NW1/4SE1/4  
NEAREST PROPERTY LINE: 1114' N

## LEGEND

- - FOUND/SET SURVEY MONUMENT PER MONUMENT RECORD EXCEPTIONS NOTED.
- - CALCULATED SURVEY MONUMENT POSITION
- (C) - CALCULATED DIMENSION



Steven A. Lund  
Professional Land Surveyor Registration No. 34995  
State of Colorado  
FOR AND ON BEHALF OF BASELINE ENGINEERING CORP.

Completed  
12/09/2011

NOTICE: According to Colorado law you MUST commence any legal action based upon any defect in this W.L.C. within three years after you first discover such defect. In no event may any action based upon any defect in this W.L.C. be commenced more than ten years from this said date of the certification show hereon.

JOB #: SYN5N68W35-01