



Weatherford[®]

Drilling Services

Proposal



YB 6

MONTEZUMA CO., CO

WELL FILE: **PLAN 1**

NOVEMBER 30, 2011

Weatherford International, Ltd.

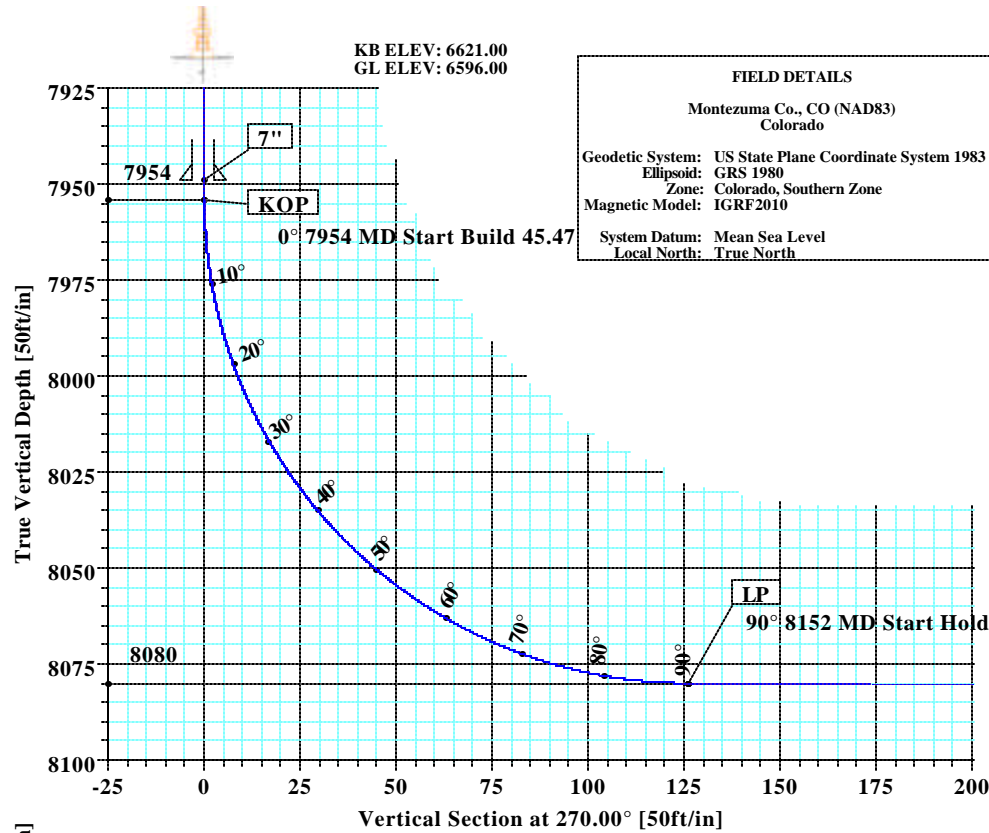
P.O. Box 61028

Midland, TX 79711 USA

+1.432.561.8892 Main

+1.432.561.8895 Fax

www.weatherford.com



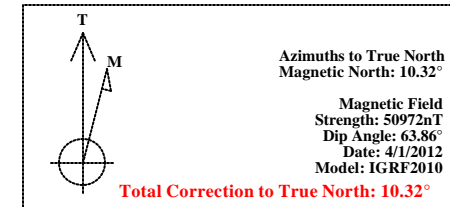
FIELD DETAILS	
Montezuma Co., CO (NAD83) Colorado	
Geodetic System:	US State Plane Coordinate System 1983
Ellipsoid:	GRS 1980
Zone:	Colorado, Southern Zone
Magnetic Model:	IGRF2010
System Datum:	Mean Sea Level
Local North:	True North

SECTION DETAILS										
Sec	MD	Inc	Azi	TVD	+N/-S	+E/-W	DLeg	TFace	VSec	Target
1	0.00	0.00	270.00	0.00	0.00	0.00	0.00	0.00	0.00	
2	7954.00	0.00	270.00	7954.00	0.00	0.00	0.00	0.00	0.00	
3	8151.92	90.00	270.00	8080.00	0.00	-126.00	45.47	270.00	126.00	
4	10025.94	90.00	270.00	8080.00	0.07	-2000.02	0.00	0.00	2000.02	PBHL

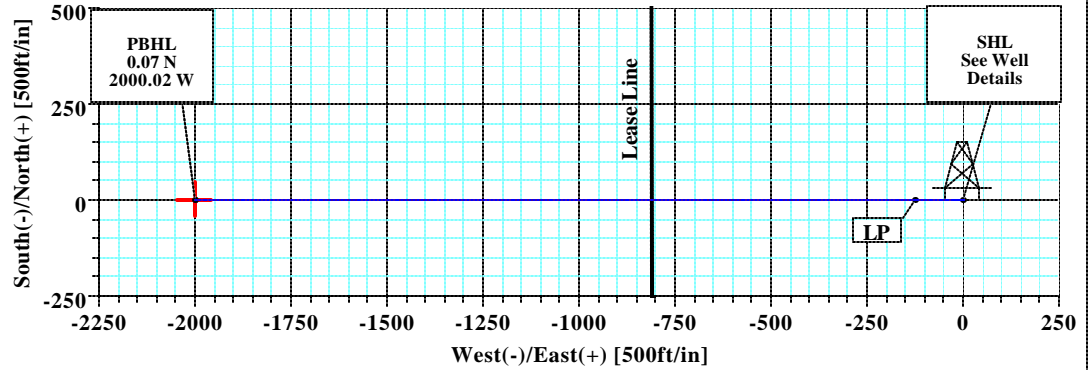
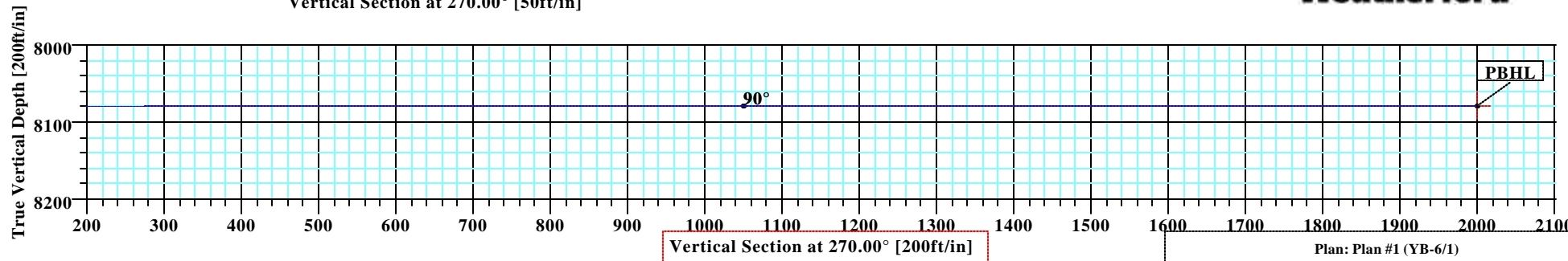
WELL DETAILS						
Name	+N/-S	+E/-W	Northing	Easting	Latitude	Longitude
YB-6	0.00	0.00	1303385.54	2045390.62	37°27'13.320N	108°47'21.444W

TARGET DETAILS						
Name	TVD	+N/-S	+E/-W	Northing	Easting	Shape
PBHL	8080.00	0.07	-2000.02	1303456.02	2043391.83	Point

SITE DETAILS	
YB-6	
Site Centre Latitude:	37°27'13.320N
Longitude:	108°47'21.444W
Ground Level:	6596.00
Positional Uncertainty:	0.00
Convergence:	-2.02



LEGEND	
—	Rosa Unit 05 016H (1)
—	1
—	Plan #1





Company: Kinder Morgan	Date: 11/30/2011	Time: 10:43:29	Page: 1
Field: Montezuma Co., CO (NAD83)	Co-ordinate(NE) Reference: Well: YB-6, True North		
Site: YB-6	Vertical (TVD) Reference: SITE 6621.0		
Well: YB-6	Section (VS) Reference: Well (0.00N,0.00E,270.00Azi)		
Wellpath: 1	Survey Calculation Method: Minimum Curvature	Db: Sybase	

Plan: Plan #1	Date Composed: 11/30/2011
Principal: Yes	Version: 1
	Tied-to: From Surface

Field: Montezuma Co., CO (NAD83)
Colorado

Map System: US State Plane Coordinate System 1983
Geo Datum: GRS 1980
Sys Datum: Mean Sea Level

Map Zone: Colorado, Southern Zone
Coordinate System: Well Centre
Geomagnetic Model: IGRF2010

Site: YB-6

Site Position:	Northing: 1303385.54 ft	Latitude: 37 27 13.320 N
From: Geographic	Easting: 2045390.62 ft	Longitude: 108 47 21.444 W
Position Uncertainty: 0.00 ft		North Reference: True
Ground Level: 6596.00 ft		Grid Convergence: -2.02 deg

Well: YB-6

Slot Name:

Well Position: +N/-S 0.00 ft	Northing: 1303385.54 ft	Latitude: 37 27 13.320 N
+E/-W 0.00 ft	Easting: 2045390.62 ft	Longitude: 108 47 21.444 W
Position Uncertainty: 0.00 ft		

Wellpath: 1

Current Datum: SITE	Height 6621.00 ft	Drilled From: Surface
Magnetic Data: 4/1/2012		Tie-on Depth: 0.00 ft
Field Strength: 50972 nT		Above System Datum: Mean Sea Level
Vertical Section: Depth From (TVD)		Declination: 10.32 deg
ft	+N/-S ft	Mag Dip Angle: 63.86 deg
		+E/-W ft
		Direction deg
0.00	0.00	0.00 270.00

Plan Section Information

MD ft	Incl deg	Azim deg	TVD ft	+N/-S ft	+E/-W ft	DLS deg/100ft	Build deg/100ft	Turn deg/100ft	TFO deg	Target
0.00	0.00	270.00	0.00	0.00	0.00	0.00	0.00	0.00	0.00	
7954.00	0.00	270.00	7954.00	0.00	0.00	0.00	0.00	0.00	0.00	
8151.92	90.00	270.00	8080.00	0.00	-126.00	45.47	45.47	0.00	270.00	
10025.94	90.00	270.00	8080.00	0.07	-2000.02	0.00	0.00	0.00	0.00	PBHL

Survey

MD ft	Incl deg	Azim deg	TVD ft	N/S ft	E/W ft	VS ft	DLS deg/100ft	Lat	Min	Sec	Long	Min	Sec	Comment
7900.00	0.00	270.00	7900.00	0.00	0.00	0.00	0.00	37	27	13.320	108	47	21.444	
7949.00	0.00	270.00	7949.00	0.00	0.00	0.00	0.00	37	27	13.320	108	47	21.444	
7954.00	0.00	270.00	7954.00	0.00	0.00	0.00	0.00	37	27	13.320	108	47	21.444	
7960.00	2.73	270.00	7960.00	0.00	-0.14	0.14	45.47	37	27	13.320	108	47	21.446	
7970.00	7.28	270.00	7969.96	0.00	-1.01	1.01	45.47	37	27	13.320	108	47	21.457	
7980.00	11.82	270.00	7979.82	0.00	-2.67	2.67	45.47	37	27	13.320	108	47	21.477	
7990.00	16.37	270.00	7989.51	0.00	-5.11	5.11	45.47	37	27	13.320	108	47	21.507	
8000.00	20.92	270.00	7998.98	0.00	-8.30	8.30	45.47	37	27	13.320	108	47	21.547	
8010.00	25.46	270.00	8008.17	0.00	-12.24	12.24	45.47	37	27	13.320	108	47	21.596	
8020.00	30.01	270.00	8017.02	0.00	-16.89	16.89	45.47	37	27	13.320	108	47	21.654	
8030.00	34.56	270.00	8025.47	0.00	-22.23	22.23	45.47	37	27	13.320	108	47	21.720	
8040.00	39.11	270.00	8033.48	0.00	-28.23	28.23	45.47	37	27	13.320	108	47	21.794	
8050.00	43.65	270.00	8040.98	0.00	-34.84	34.84	45.47	37	27	13.320	108	47	21.876	
8060.00	48.20	270.00	8047.93	0.00	-42.02	42.02	45.47	37	27	13.320	108	47	21.965	
8070.00	52.75	270.00	8054.29	0.00	-49.73	49.73	45.47	37	27	13.320	108	47	22.061	
8080.00	57.30	270.00	8060.03	0.00	-57.92	57.92	45.47	37	27	13.320	108	47	22.162	
8090.00	61.84	270.00	8065.09	0.00	-66.54	66.54	45.47	37	27	13.320	108	47	22.269	

Company: Kinder Morgan Field: Montezuma Co., CO (NAD83) Site: YB-6 Well: YB-6 Wellpath: 1	Date: 11/30/2011 Co-ordinate(NE) Reference: Well: YB-6, True North Vertical (TVD) Reference: SITE 6621.0 Section (VS) Reference: Well (0.00N,0.00E,270.00Azi) Survey Calculation Method: Minimum Curvature Db: Sybase
--	---

Survey

MD ft	Incl deg	Azim deg	TVD ft	N/S ft	E/W ft	VS ft	DLS deg/100ft	Lat	Min	Sec	Long	Min	Sec	Comment
8100.00	66.39	270.00	8069.45	0.00	-75.54	75.54	45.47	37	27	13.320	108	47	22.381	
8110.00	70.94	270.00	8073.09	0.00	-84.85	84.85	45.47	37	27	13.320	108	47	22.496	
8120.00	75.48	270.00	8075.98	0.00	-94.42	94.42	45.47	37	27	13.320	108	47	22.615	
8130.00	80.03	270.00	8078.10	0.00	-104.19	104.19	45.47	37	27	13.320	108	47	22.736	
8140.00	84.58	270.00	8079.44	0.00	-114.10	114.10	45.47	37	27	13.320	108	47	22.859	
8150.00	89.13	270.00	8079.99	0.00	-124.08	124.08	45.47	37	27	13.320	108	47	22.983	
8151.92	90.00	270.00	8080.00	0.00	-126.00	126.00	45.47	37	27	13.320	108	47	23.007	LP
8200.00	90.00	270.00	8080.00	0.01	-174.08	174.08	0.00	37	27	13.320	108	47	23.603	
8300.00	90.00	270.00	8080.00	0.01	-274.08	274.08	0.00	37	27	13.320	108	47	24.843	
8400.00	90.00	270.00	8080.00	0.01	-374.08	374.08	0.00	37	27	13.320	108	47	26.083	
8500.00	90.00	270.00	8080.00	0.02	-474.08	474.08	0.00	37	27	13.320	108	47	27.323	
8600.00	90.00	270.00	8080.00	0.02	-574.08	574.08	0.00	37	27	13.320	108	47	28.564	
8700.00	90.00	270.00	8080.00	0.02	-674.08	674.08	0.00	37	27	13.320	108	47	29.804	
8800.00	90.00	270.00	8080.00	0.03	-774.08	774.08	0.00	37	27	13.320	108	47	31.044	
8900.00	90.00	270.00	8080.00	0.03	-874.08	874.08	0.00	37	27	13.320	108	47	32.284	
9000.00	90.00	270.00	8080.00	0.03	-974.08	974.08	0.00	37	27	13.320	108	47	33.524	
9100.00	90.00	270.00	8080.00	0.04	-1074.08	1074.08	0.00	37	27	13.320	108	47	34.765	
9200.00	90.00	270.00	8080.00	0.04	-1174.08	1174.08	0.00	37	27	13.320	108	47	36.005	
9300.00	90.00	270.00	8080.00	0.04	-1274.08	1274.08	0.00	37	27	13.320	108	47	37.245	
9400.00	90.00	270.00	8080.00	0.05	-1374.08	1374.08	0.00	37	27	13.320	108	47	38.485	
9500.00	90.00	270.00	8080.00	0.05	-1474.08	1474.08	0.00	37	27	13.320	108	47	39.725	
9600.00	90.00	270.00	8080.00	0.05	-1574.08	1574.08	0.00	37	27	13.320	108	47	40.966	
9700.00	90.00	270.00	8080.00	0.06	-1674.08	1674.08	0.00	37	27	13.320	108	47	42.206	
9800.00	90.00	270.00	8080.00	0.06	-1774.08	1774.08	0.00	37	27	13.320	108	47	43.446	
9900.00	90.00	270.00	8080.00	0.06	-1874.08	1874.08	0.00	37	27	13.320	108	47	44.686	
10000.00	90.00	270.00	8080.00	0.07	-1974.08	1974.08	0.00	37	27	13.320	108	47	45.926	
10025.94	90.00	270.00	8080.00	0.07	-2000.02	2000.02	0.00	37	27	13.320	108	47	46.248	PBHL

Targets

Name	Description Dip.	Dir.	TVD ft	+N/-S ft	+E/-W ft	Map Northing ft	Map Easting ft	<--- Latitude ---> Deg Min Sec			<--- Longitude ---> Deg Min Sec		
PBHL			8080.00	0.07	-2000.02	1303456.02	2043391.83	37	27	13.320 N	108	47	46.248 W

Casing Points

MD ft	TVD ft	Diameter in	Hole Size in	Name
7949.00	7949.00	7.000	0.000	7"

Formations

MD	TVD	Formations	Lithology	Dip Angle	Dip Direction

Annotation

MD ft	TVD ft	
7954.00	7954.00	KOP
8151.92	8080.00	LP
10025.94	8080.00	PBHL

**Weatherford®****Weatherford Drilling Services**

GeoDec v5.03

Report Date: November 30, 2011

Job Number: _____

Customer: Kinder Morgan

Well Name: YB 6

API Number: _____

Rig Name: _____

Location: Montezuma Co., CO

Block: _____

Engineer: KRN

Geodetic Latitude / Longitude

System: Latitude / Longitude

Projection: Geodetic Latitude and Longitude

Datum: North American Datum 1983

Ellipsoid: GRS 1980

Latitude 37.4537000 DEG

Longitude -108.7892900 DEG

Geodetic Latitude / Longitude

System: Latitude / Longitude

Projection: Geodetic Latitude and Longitude

Datum: North American Datum 1983

Ellipsoid: GRS 1980

Latitude 37 27 13.3200000 DMS

Longitude -108 47 21.4440000 DMS

Geodetic Location WGS84

Elevation = 0.0 Meters

Latitude = 37.45370° N 37° 27 min 13.320 sec

Longitude = 108.78929° W 108° 47 min 21.444 sec

Magnetic Declination = 10.32° [True North Offset]

Local Gravity = .9993 g CheckSum = 7508

Local Field Strength = 50967 nT Magnetic Vector X = 22093 nT

Magnetic Dip = 63.86° Magnetic Vector Y = 4024 nT

Magnetic Model = IGRF-2010g11 Magnetic Vector Z = 45753 nT

Spud Date = Apr 01, 2012 Magnetic Vector H = 22457 nT

Signed: _____

Date: _____