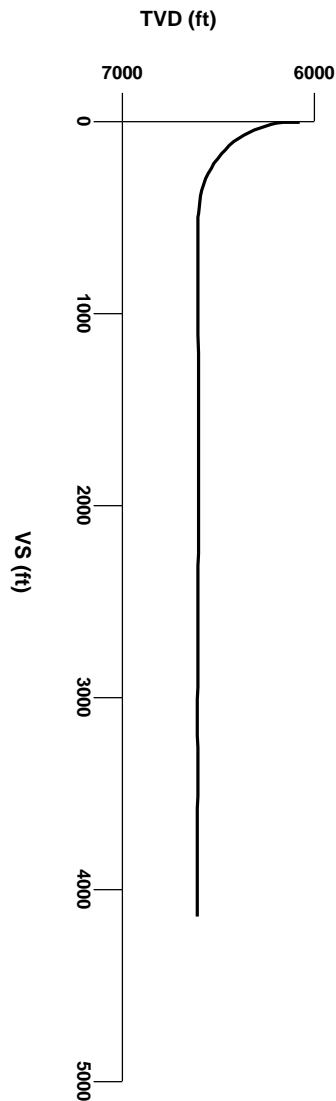




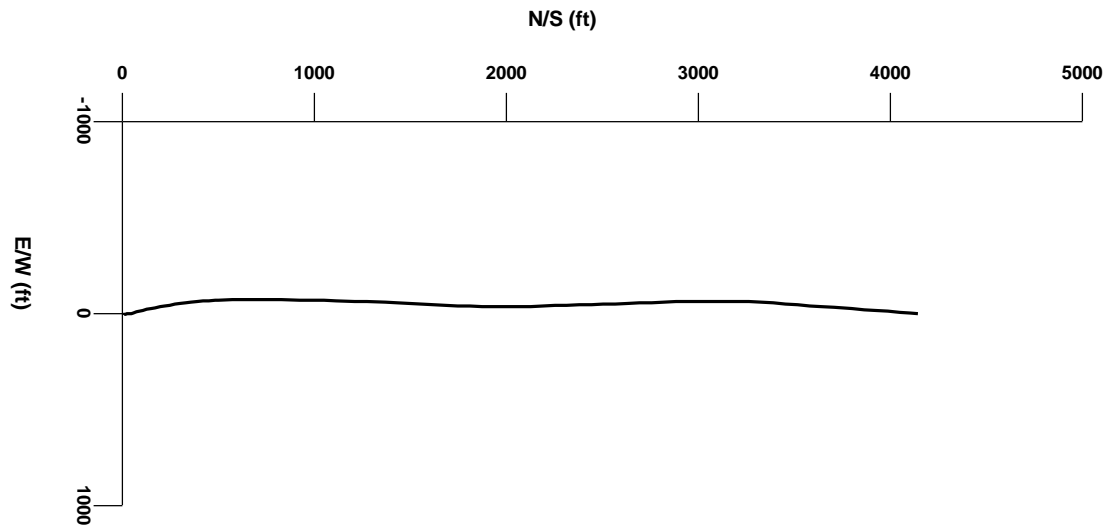
LOG created using LPLOT VH Version 3.0, November 08, 2011, Copyright (C) 1999-2009 Pason Systems Corp.

OPERATOR: Continental Resources
WELL: HAHN 1-4H
PRINT DATE: 11/8/2011 6:46:01 AM

LOCATION: Section 4 T7N R62W
COUNTY: Weld
STATE: Colorado

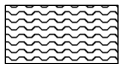


Survey Elevation

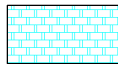


Survey Plan

LITHOLOGIES



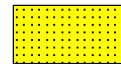
Bentonite



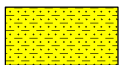
Chalk



Marl



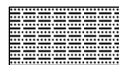
Sandstone



Shaly Sandstone



Shaly Siltstone



Silty Shale

ENGINEERING SYMBOLS



Casing



Casing



Connection Gas



Midnight Depth

BAR SYMBOLS



Rotating



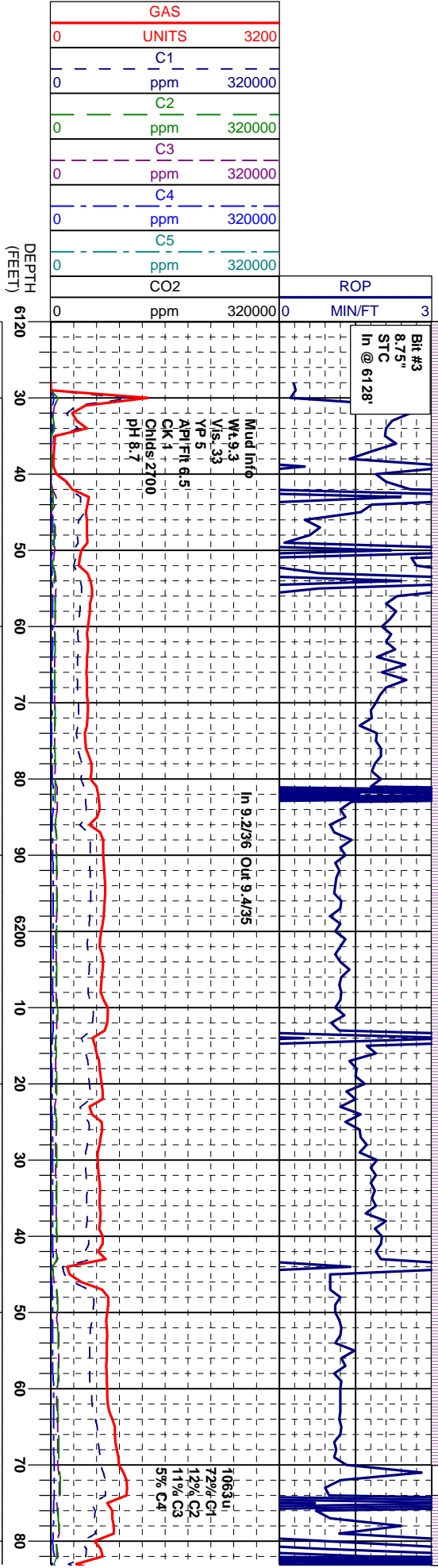
Sliding

SLIDE/ROTATE

0M

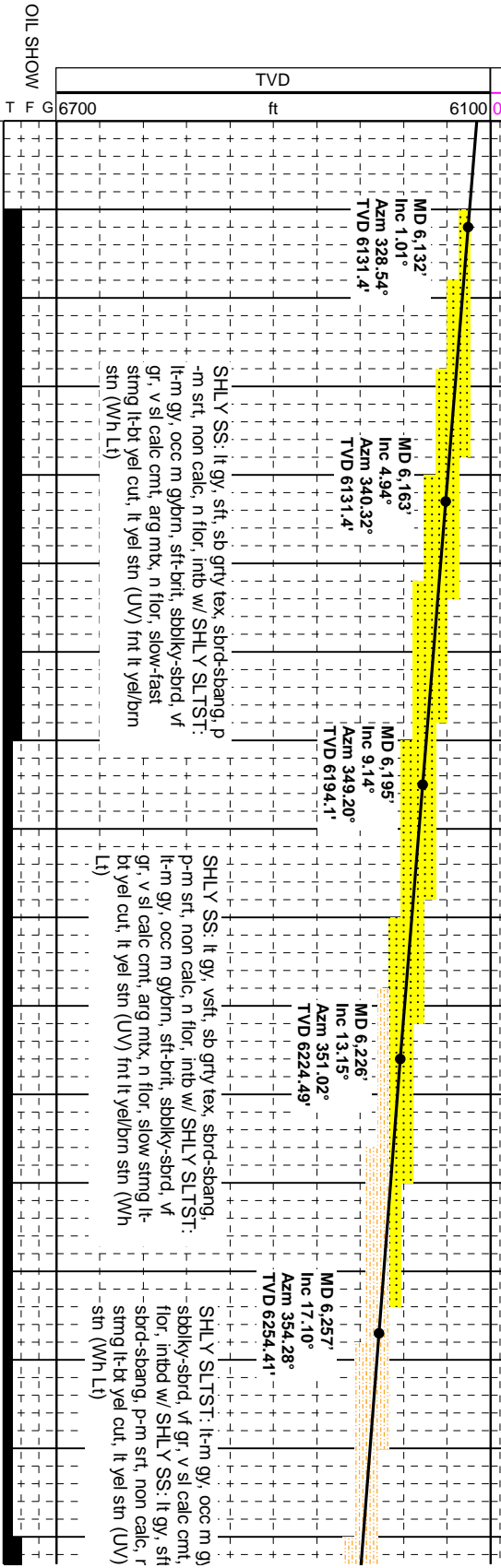
15M

0G



CUTTINGS
LITHOLOGY

Gamma
0 Api 300

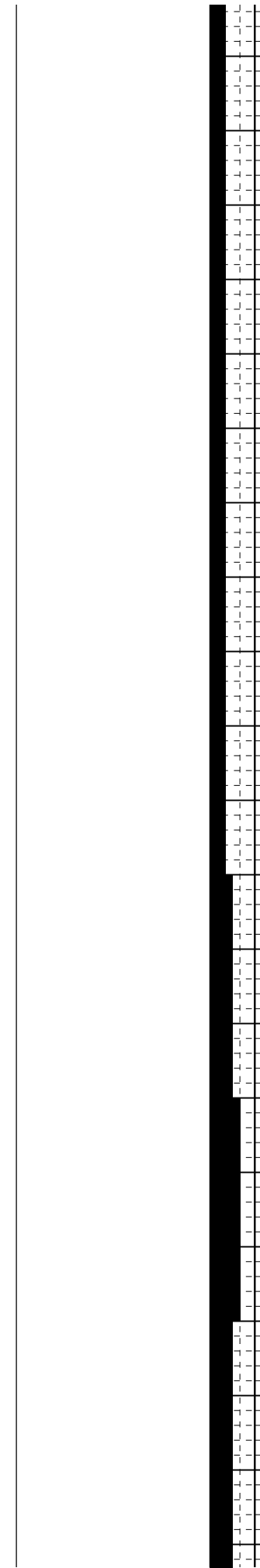
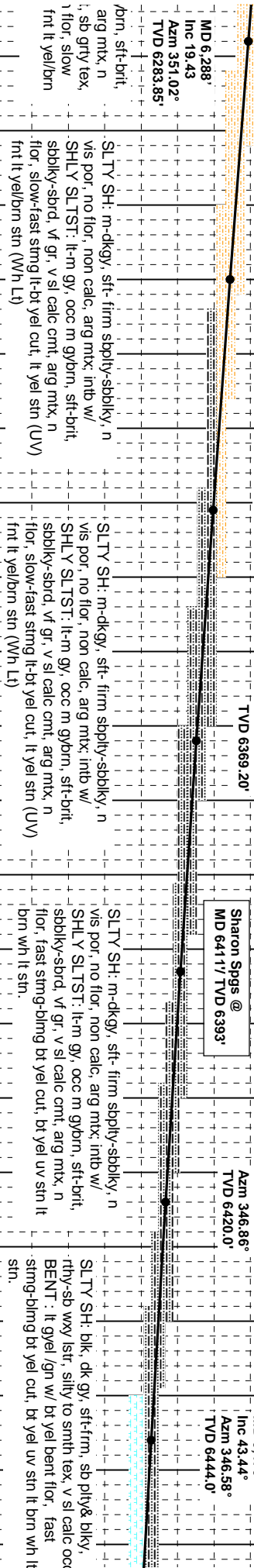
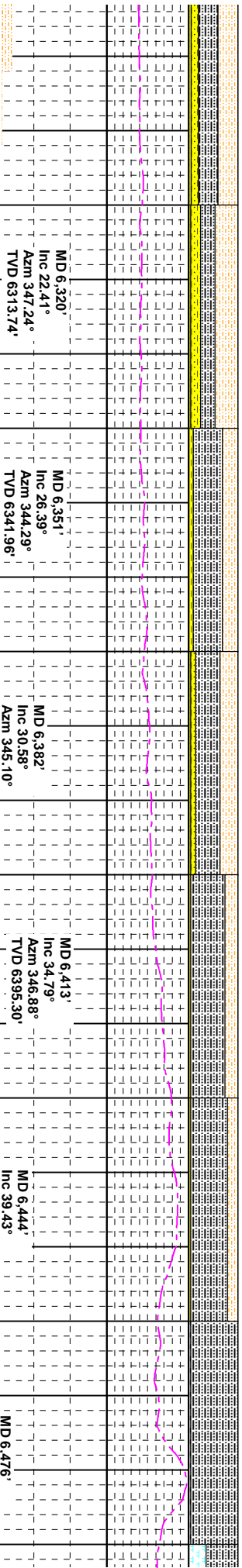
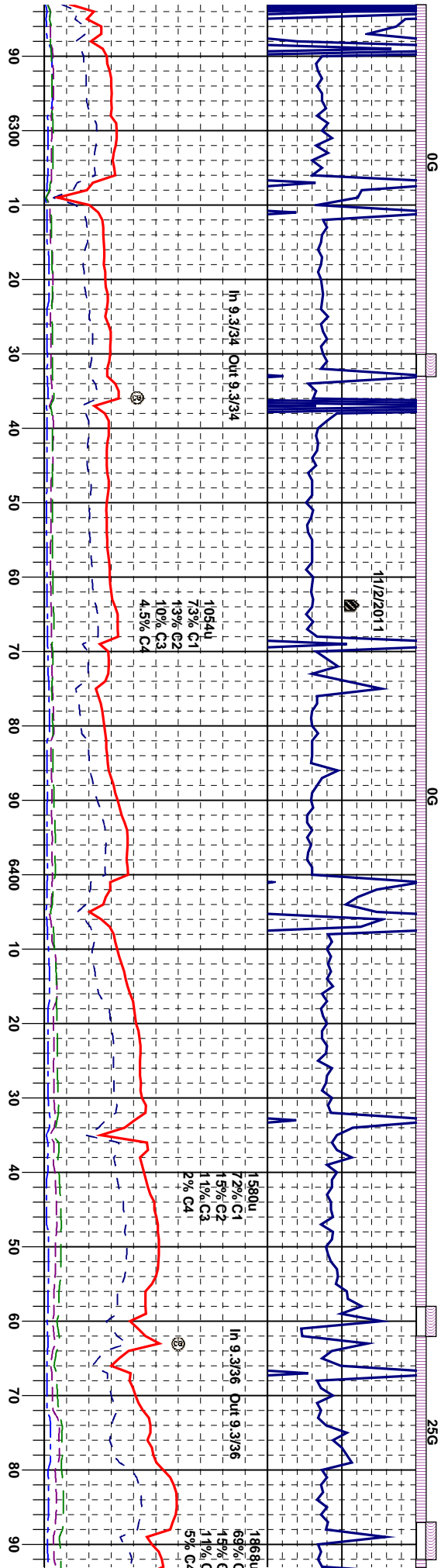


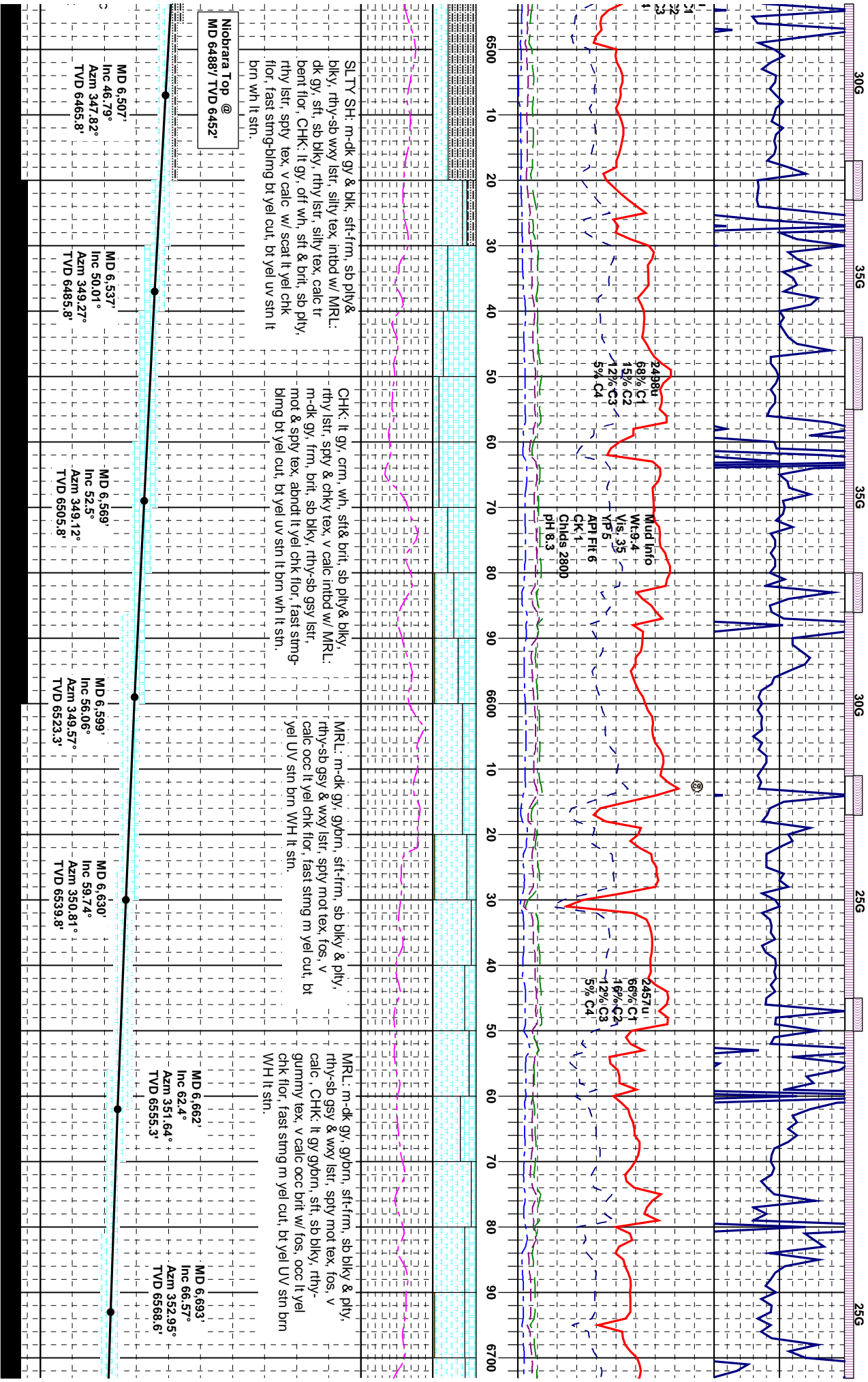
SAMPLE PHOTOS

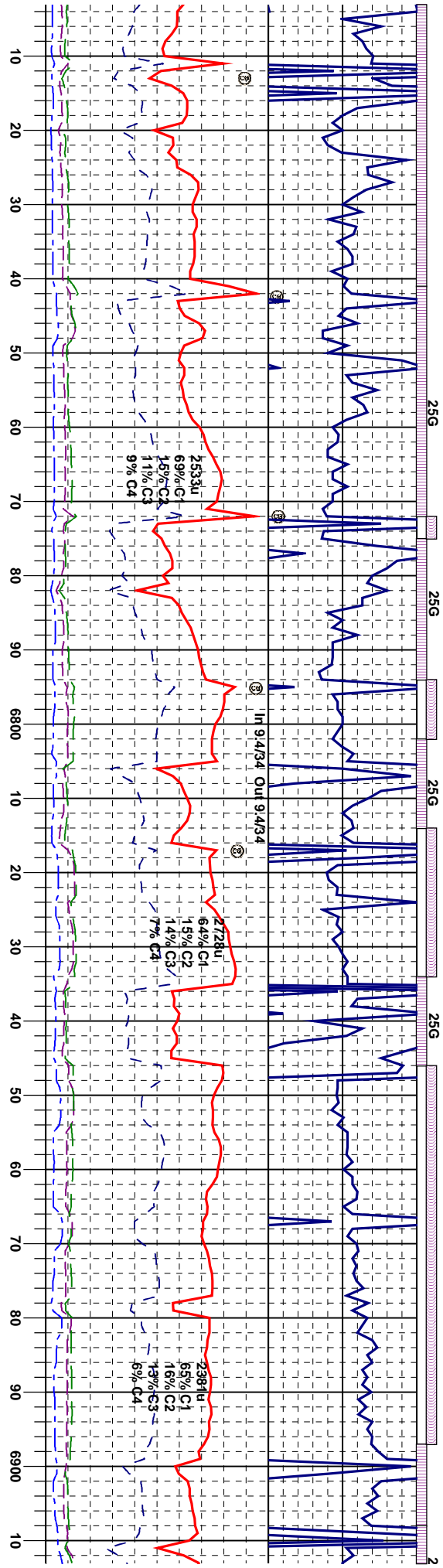
05

05

25G







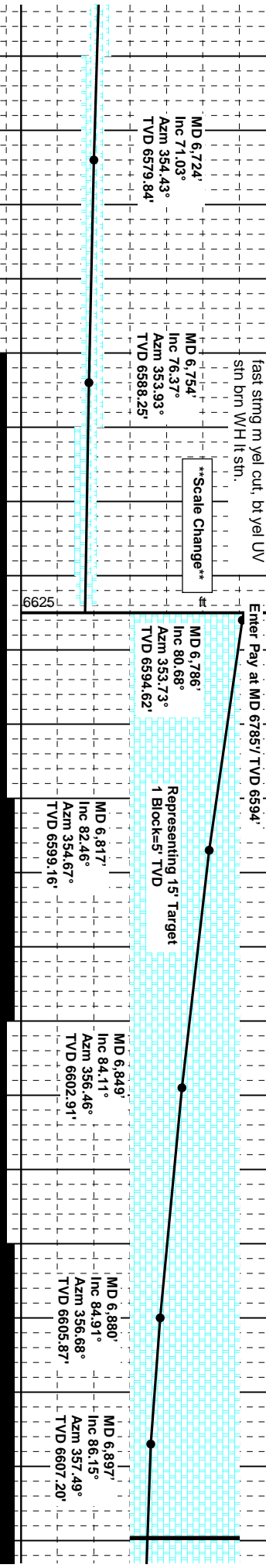
CHK: It gy, crm, wh, sft brt, sb biky, rthy & gunmy lstr, silty to spid tex, v calc w/ fos, MRL: dk gy - gy brn, frm, sft, sb biky, rthy-sb wxy lstr, mot tex, v calc scat lt yel flr, fast stmg m yel cut, bt yel UV stn brn WH lt stn.

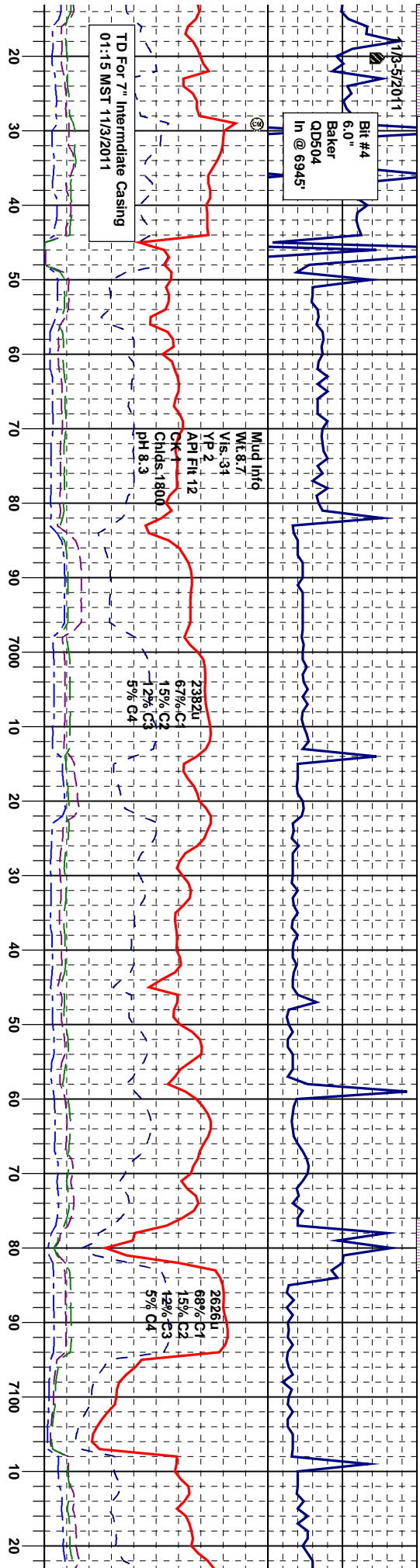
CHK: It gy, crm, wh, sft brt, sb biky, rthy & gunmy lstr, silty to spid tex, v calc w/ fos, MRL: dk gy - gy brn, frm, sft, sb biky, rthy-sb wxy lstr, mot tex, v calc scat lt yel flr, fast stmg m yel cut, bt yel UV stn brn WH lt stn.

CHK: It gy-it brn, crm, v sft-firm, brit, sb biky, rthy & gunmy lstr, silty - stri or spid tex, v calc w/ fos, MRL: dk gy - gy brn, frm, sft, sb biky, rthy-sb wxy lstr, mot tex, v calc abnt lt yel flr, scat bent, fast blmg bt yel cut, bt yel uv stn lt brn wh lt stn.

CHK: It gy-it brn, crm, v sft-firm, brit, sb biky, rthy & gunmy lstr, silty - stri or spid tex, v calc w/ fos, MRL: dk gy - gy brn, frm, sft, sb biky, rthy-sb wxy lstr, mot tex, v calc abnt lt yel flr, tr bent, fast blmg bt yel cut, bt yel uv stn lt brn wh lt stn.

CHK: It gy, crm, wh, sft brt, sb biky, rthy & gunmy lstr, silty to spid tex, v calc w/ fos, MRL: dk gy - gy brn, frm, sft, sb biky, rthy-sb wxy lstr, mot tex, v calc scat lt yel flr, fast stmg m yel cut, bt yel UV stn brn WH lt stn.





ly-it brn, crm, v sft-firm, brt, sb blkly,
immy lstr, silly - stri or spd tex, v calc
IRL: dk gy - gy brn, frm, sft, sb blkly,
ry lstr, mot tex, v calc abnt lt yel flr,
ast blmg bt yel cut, bt yel uv stn lt brn

CHK: lt-m gy, sft-firm, sb blkly, rthy & gummy
lstr, sl mot, silly tex, v calc w/ fos, MRL: dk gy
- gy brn, frm, sft, sb blkly, rthy-sb wxy lstr, mot
tex, v calc, tr lt yel flr, fast blmg bt yel cut, bt
yel uv stn lt brn wh lt stn

CHK: lt-m gy, sft-firm, sb blkly, rthy & gummy
lstr, sl mot, silly tex, v calc w/ fos, MRL: dk gy
- gy brn, frm, sft, sb blkly, rthy-sb wxy lstr, mot
tex, v calc, tr lt yel flr, fast blmg bt yel cut, bt
yel uv stn lt brn wh lt stn

CHK: lt gy, occ mgy, sft-firm, sb blkly, rthy lstr,
sl mot & stri tex, v calc w/ fos, MRL: dk gy -
gy brn, frm, sft, sb blkly, rthy-sb wxy lstr, mot
tex, v calc, abnt lt yel flr, fast blmg bt yel cut,
bt yel uv stn lt brn wh lt stn

CHK: lt gy, occ mgy, s
sl mot & stri tex, v calc
gy brn, frm, sft, sb blkly
tex, v calc, scat lt yel fl
bt yel uv stn lt brn wh l

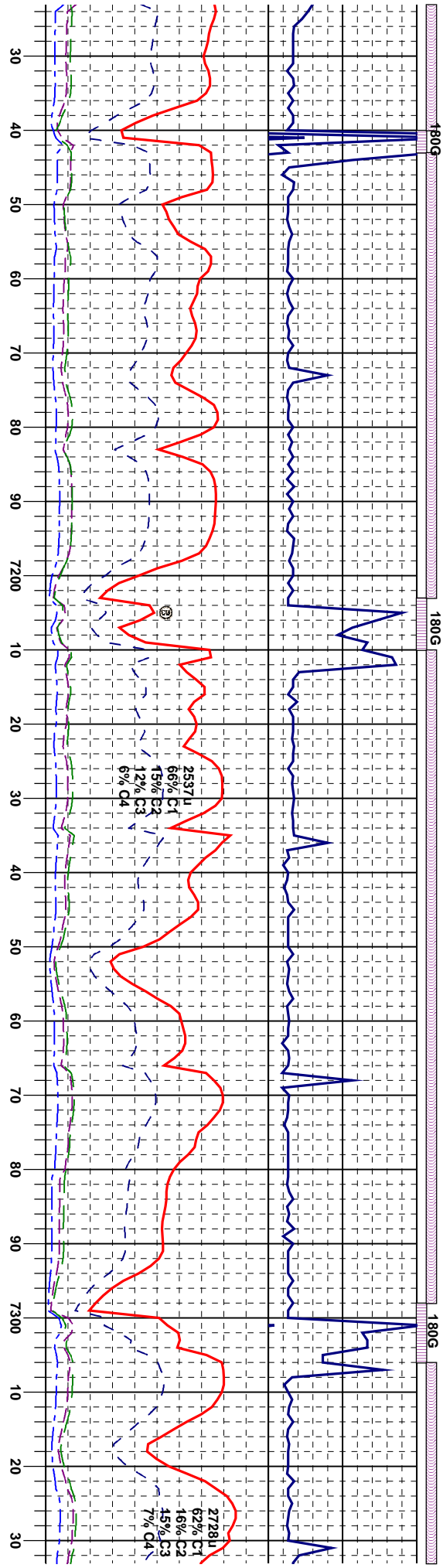
7" Intermediate Casing Set @ 6,940'

From MD 6945',
Survey 40' Back
ADR 59' Back
GR 74' Back

MD 6,973'
Inc 89.81°
Azim 359.41°
TVD 6607.99'

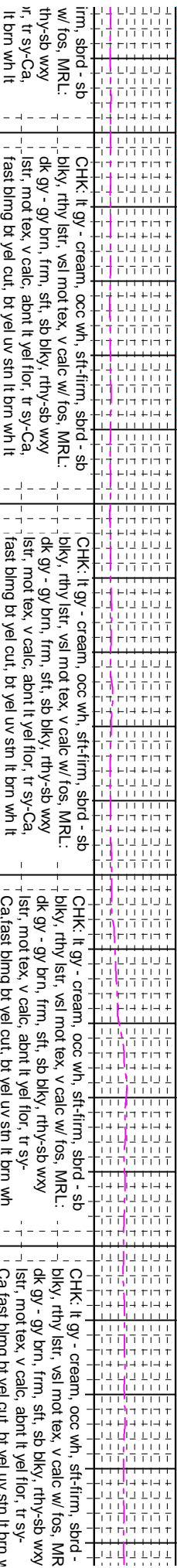
MD 7,036'
Inc 90.31°
Azim 358.91°
TVD 6607.92'

MD 7,100'
Inc 90.62°
Azim 0.15°
TVD 6607.40'



It-firm, sb blk, rthy lstr, w/ fos, MRL: dk gy - rthy-sb wxy lstr, mot or, fast blng bt yel cut, t sin	CHK: It gy - wh, cream, occ mgy, sft-firm, sb blk, rthy lstr, mot tex, v calc w/ fos, MRL: dk gy - gy brn, frm, sft, sb blk, rthy-sb wxy lstr, mot tex, v calc, scat It yel flr, tr sy-Ca, fast blng bt yel cut, bt yel uv sin It brn wh It sin	CHK: It gy - wh, cream, occ mgy, sft-firm, sb blk, rthy lstr, mot tex, v calc w/ fos, MRL: dk gy - gy brn, frm, sft, sb blk, rthy-sb wxy lstr, mot tex, v calc, scat It yel flr, tr sy-Ca, fast blng bt yel cut, bt yel uv sin It brn wh It sin	CHK: It-m gy, occ cream, sft-firm, sbd - sb blk, rthy lstr, sl mot tex, v calc w/ fos, MRL: dk gy - gy brn, frm, sft, sb blk, rthy-sb wxy lstr, mot tex, v calc, scat It yel flr, tr sy-Ca, tr fos, fast blng bt yel cut, bt yel uv sin It brn wh It sin	CHK: It gy - cream, occ wh, sft-f blk, rthy lstr, vsl mot tex, v calc dk gy - gy brn, frm, sft, sb blk, r lstr, mot tex, v calc, abnt It yel flc fast blng bt yel cut, bt yel uv sin
--	---	---	--	--

MD 7,163' Inc 91.05° Az 0.52° TVD 6606.48'	MD 7,226' Inc 90.31° Az 0.93° TVD 6605.74'	MD 7,321' Inc 90.00° Az 1.00° TVD 6605.48'
---	---	---



lim, sprd - sb	CHK: It gy - cream, occ wh, sft-firm, sprd - sb	CHK: It gy - cream, occ wh, sft-firm, sprd - sb	CHK: It gy - cream, occ wh, sft-firm, sprd - sb
w/ fos, MRL:	blky, rthy istr, vs! mot tex, v calc w/ fos, MRL:	blky, rthy istr, vs! mot tex, v calc w/ fos, MRL:	blky, rthy istr, vs! mot tex, v calc w/ fos, MR
thy-sb way	dk gy - gy brn, firm, sft, sb blky, rthy-sb way	dk gy - gy brn, firm, sft, sb blky, rthy-sb way	dk gy - gy brn, firm, sft, sb blky, rthy-sb way
ir, it sy-Ca,	istr, mot tex, v calc, about it yel flor, it sy-Ca,	istr, mot tex, v calc, about it yel flor, it sy-Ca,	istr, mot tex, v calc, about it yel flor, it sy-Ca,
it brn wh it	fast blmg bt yel cut, bt yel uv sn it brn wh it	fast blmg bt yel cut, bt yel uv sn it brn wh it	fast blmg bt yel cut, bt yel uv sn it brn wh it

stn

stn

It stn

It's not

MD 7,385'
Inc 90.62°
Azim 0.93°
TVD 6605.13'

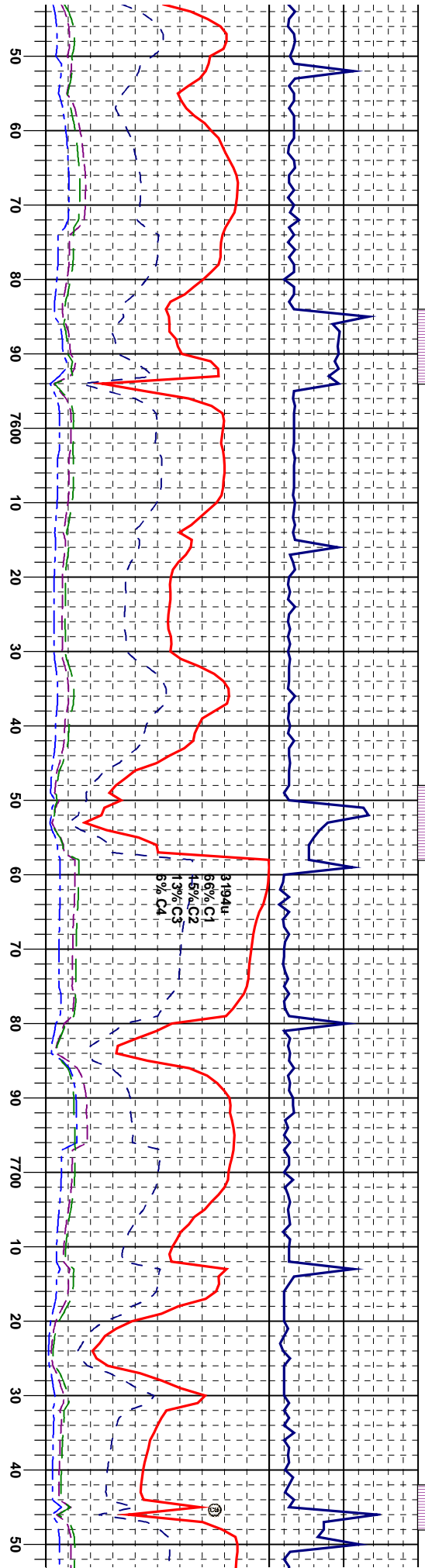
MD 7,448'
Inc 89.94°
Azim 1.80°
TVD 6606.72'

MD 7,511'
Inc 89.57°
Azim 1.40°
TVD 6606.99'

HS

135R

180



sp
L:
wh

CHK: It-gy - cream, occ wh, sft-firm, sbnd - sb biky, rthy lstr, vsi mot tex, v calc w/ fos, MRL: dk gy - gy brn, frm, sft, sb biky, rthy-sb wxy lstr, mot tex, v calc, abnt lt yel flor, tr sy-Ca, fast blmg bt yel cut, bt yel uv sin lt brn wh lt sin

CHK: It-m gy, occ cream, sft-firm, sbnd - sb biky, rthy lstr, vsi mot tex, v calc w/ fos, MRL: dk gy - gy brn, frm, sft, sb biky, rthy-sb wxy lstr, mot tex, v calc, abnt lt yel flor, tr sy-Ca, fast blmg bt yel cut, bt yel uv sin lt brn wh lt sin

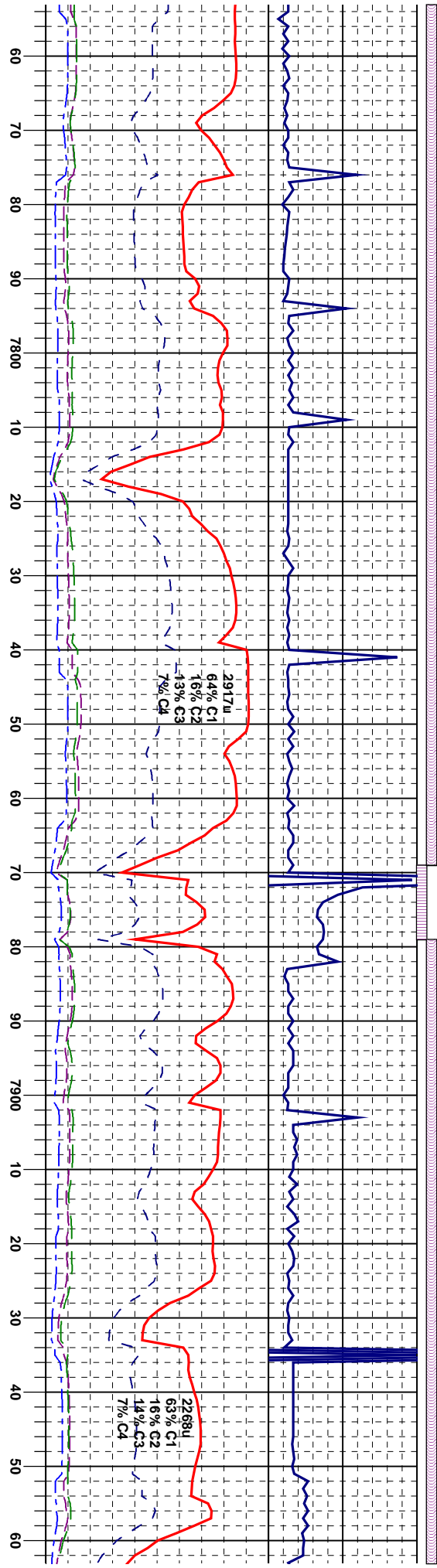
CHK: It-m gy, occ cream, sft-firm, sbnd - sb biky, rthy lstr, vsi mot tex, v calc w/ fos, MRL: dk gy - gy brn, frm, sft, sb biky, rthy-sb wxy lstr, mot tex, v calc, abnt lt yel flor, tr sy-Ca, fast blmg bt yel cut, bt yel uv sin lt brn wh lt sin

MRL: m-dk gy, gybrn, sft-firm, sb biky, rthy - gsy lstr, mot & sb gxy tex, v calc, CHK: It gy, sft, sb biky, rthy lstr, mot tex, v calc, scat lt yel flor, fast blmg bt yel cut, bt yel uv sin lt brn wh lt sin

<<<<Top Of Target>>>>

MD 7,607'
Inc 91.42°
Azim 1.18°
TVD 6606.16'

MD 7,671'
Inc 90.12°
Azim 1.67°
TVD 6605.30'



na Data

MRL: m-dk gy, gybrn, sft-firm, sb blk, rthy -
gsy lstr, mot & sb grty tex, v calc, CHK: lt gy,
sft, sb blk, rthy lstr, mot tex, v calc scat lt yel
flor, bt yel string cut, bt yel UV light stain, lt brn
WH light sin

CHK: lt-m gy, occ cream, sft-firm, sbord - sb
blk, rthy lstr, vsi mot tex, v calc w/ fos, MRL:
dk gy - gy brn, frm, sft, sb blk, rthy-sb wvy
lstr, mot tex, v calc, about lt yel flor, lt sy-Ca,
yel string cut, bt yel UV light stain, lt brn WH
light sin

CHK: lt gy, lt gybrn, sft, brit, blk, dul -erthy
lstr, sply & mot tex, v calc, fos, about lt yel
chk flor, bt yel string cut, bt yel UV light stain,
lt brn WH light sin

CHK: lt gy, lt gybrn, sft, brit, blk, dul -erthy
lstr, sply & mot tex, v calc, fos, about lt yel
chk flor, increasing MRL: dk gy, sft-firm, sb
blk, gsy lstr, sb grty & mot tex, v calc, w/ orig
mat, bt yel string cut, bt yel UV light stain, lt
brn WH light sin

MRL: dkgy,
mot tex, CH
dul-rthy lstr,
abundant lt yel
UV light stai

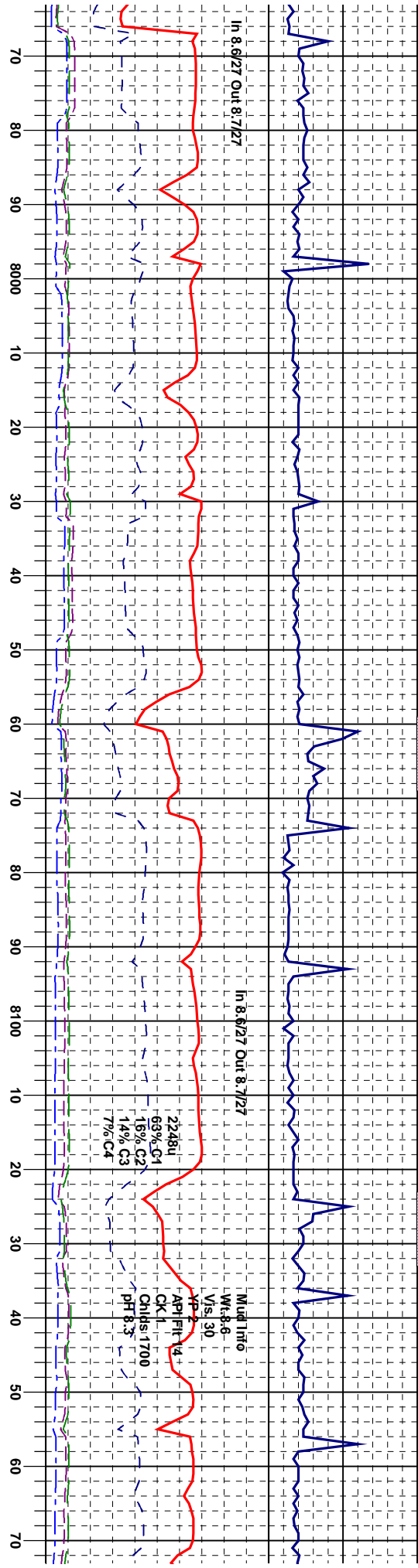
MD 7.767'
Inc 89.51°
Azim 3.40°
TVD 6605.6'

MD 7.829'
Inc 91.11°
Azim 2.79°
TVD 6605.3'

MD 7.892'
Inc 89.07°
Azim 2.36°
TVD 6605.18'

MD 7.956'
Inc 89.13°
Azim 2.50°
TVD 6606.18'

<<<<Top Of Target>>>>



frm, sb blk, rthy-gsy lstr, sb grty -
K: lt gy, m gybrn, sft-brt, sb blk,
mot & spty tex, v calc scat -
chk flr, bt yel smg cut, bt yel
in, lt brn WH light sin

CHK: lt-m gy, gybrn, sft- & brt, sb blk, rthy
lstr, mot tex, v calc w/ fos, occ scat lt yel chk
flr, MRL: m-dk gy, sft-frm, sb blk, org mat v
calc, bt yel smg cut, bt yel UV light stain, lt
brn WH light sin

MRL: dkgy, frm, sb blk, rthy-gsy lstr, sb grty -
mot tex, CHK: lt gy, m gybrn, sft-brt, sb blk,
du-rthy lstr, mot & spty tex, v calc scat lt yel
chk flr, smg bt yel cut, lt-bt yel UV sin, lt brn
WH lt sin

MRL: dkgy, frm, sb blk, rthy-gsy lstr, sb grty -
mot tex, CHK: lt gy, m gybrn, sft-brt, sb blk,
du-rthy lstr, mot & spty tex, v calc scat lt yel
chk flr, smg bt yel cut, lt-bt yel UV sin, lt brn
WH lt sin

CHK: m gybrn, occ
dul lstr, mot tex, v c
intbd w/ MRL: m-dk
tex, calc w/ org mat
UV sin, lt brn WH lt

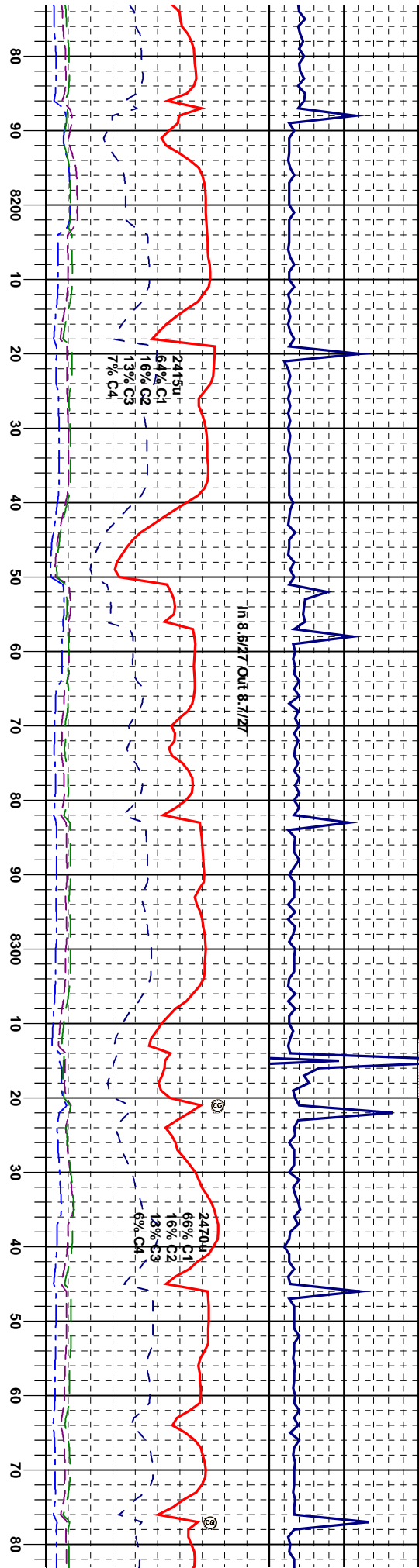
Top Of Target

Top Of Target

MD 8,019'
Inc 91.48°
Azim 2.88°
TVD 6605.8'

MD 8,083'
Inc 91.42°
Azim 3.19°
TVD 6604.2'

MD 8,146'
Inc 88.89°
Azim 1.33°
TVD 6604.04'



It gy, frm, brt, blk, rthy-
calc w occ lt yel chk flr,
gy, frm, sb blk, sb grty
stmg bt yel cut, lt-bt yel
sin

MRL: dkgy, frm, sb blk, rthy-gsy lstr, sb grty -
mot tex, CHK: lt gy, m gybrn, sft-brt, sb blk,
du-rthy lstr, mot & spty tex, v calc scat lt yel
chk flr, stmg bt yel cut, lt-bt yel UV sin, lt brn
WH lt sin

MRL: dkgy, frm, sb blk, rthy-gsy lstr, sb grty -
mot tex, CHK: lt gy, m gybrn, sft-brt, sb blk,
du-rthy lstr, mot & spty tex, v calc scat lt yel
chk flr,

MRL: m-dk gy, frm, sb blk, rthy-gsy lstr, mot
-sb grty tex, CHK: lt-m gy gybrn, occ wh, sft,
brt, sb blk, v calc w/ fos, scat lt yel chk flr,
stmg bt yel cut, lt-bt yel UV sin, lt brn WH lt
sin

CHK: lt-m gy, gybrn, sft, brt, sb
lstr, mot-spty tex, v calc w/ fos,
occ lt yel yel chk flr, fast stmg l
yel UV sin, lt brn WH lt sin.

MD 8,208'
Inc 89.63°
Azim 1.47°
TVD 6604.85'

MD 8,272'
Inc 89.94°
Azim 1.74°
TVD 6605.09'

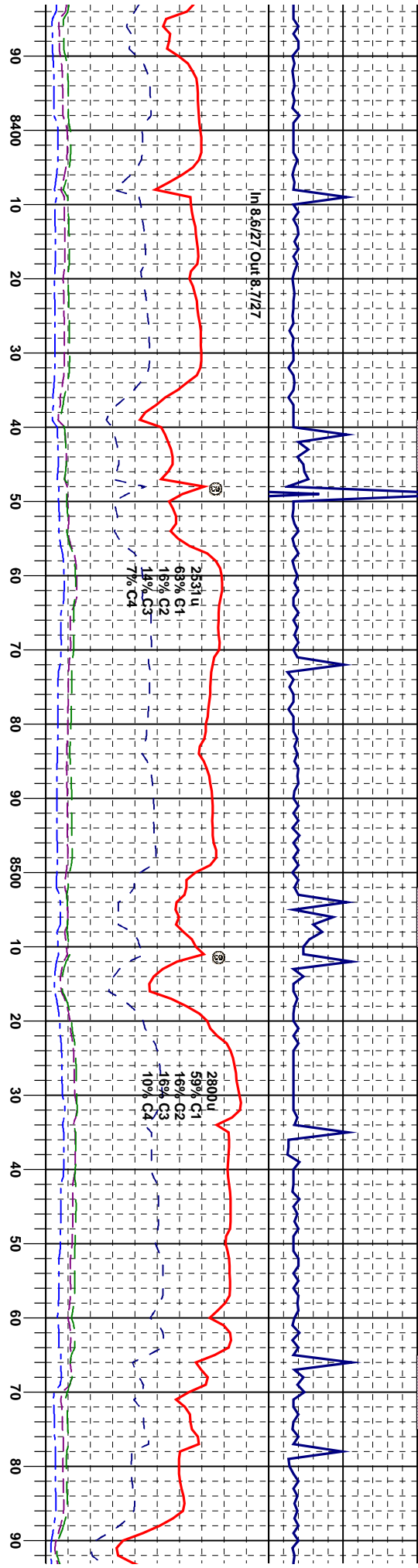
MD 8,335'
Inc 89.13°
Azim 359.97°
TVD 6605.60'

<<<<<Top Of Target>>>>>

180

180

180



MRL: m-dk gy & blk, frm, brit, sb blk, rthy & gsy lstr, mot & sb gty tex, org mat, v calc intbd w/ CHK: lt-m gybrn, sft, brit, sb ply & blk, dul lstr, mot tex, v calc w occ lt yel chk flr, fast stmg bt ye, cut, bt yel UV stn, lt brn WH lt stn.

CHK: lt-m gy, gybrn, sft, brit, sb ply, rthy-dul lstr, mot-spty tex, v calc w/ fos, & dk gy str, occ lt yel chk flr, fast stmg bt ye, cut, bt yel UV stn, lt brn WH lt stn.

MRL: m-dk gy & blk, frm, brit, sb blk, rthy & gsy lstr, mot & sb gty tex, org mat, v calc intbd w/ CHK: lt-m gybrn, sft, brit, sb ply & blk, dul lstr, mot tex, v calc w occ lt yel chk flr, stmg bt ye, cut, bt yel UV stn, lt brn WH lt stn.

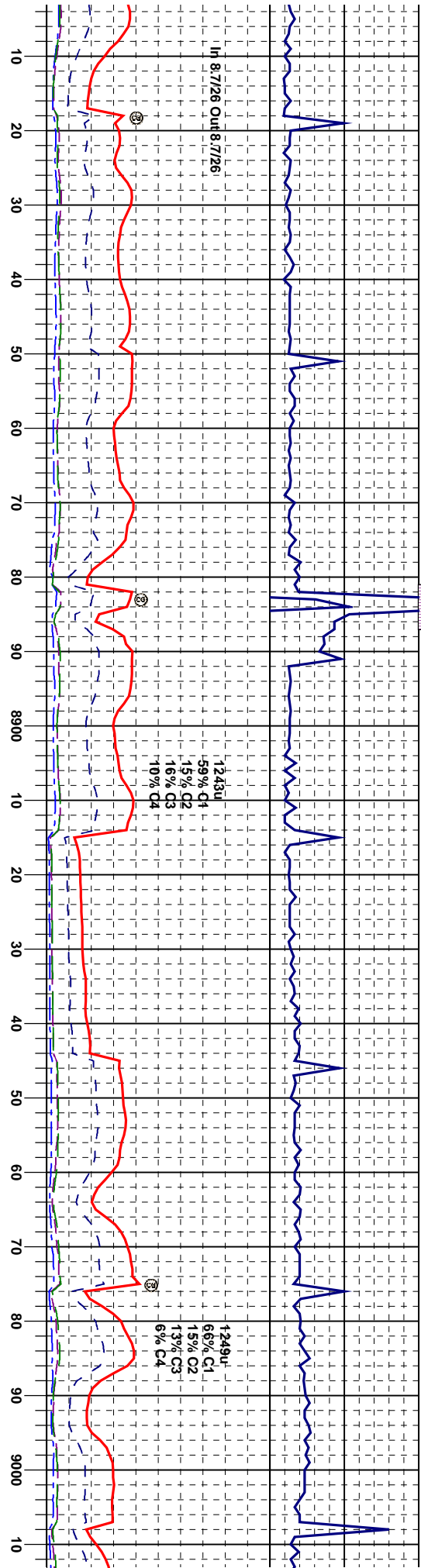
MRL: m-dk gy & blk, frm, brit, sb blk, rthy & gsy lstr, mot & sb gty tex, org mat, v calc intbd w/ CHK: lt-m gybrn, sft, brit, sb ply & blk, dul lstr, mot tex, v calc w occ lt yel chk flr, fast stmg bt ye, cut, bt yel UV stn, lt b WH lt stn.

MD 8,399'
Inc 90.43°
Azim 0.39°
TVD 6605.8'

MD 8,462'
Inc 90.74°
Azim 359°
TVD 6605.2'

MD 8,525'
Inc 90.8°
Azim 359.17°
TVD 6604.35'

MD 8,588'
Inc 89.07°
Azim 358.2°
TVD 6604.4'



CHK: It gy/brn-crm, occ mgy, sft, brt, sbply-sbblky, dul lstr, v mot tex, v calc w/ occ It yel chk flor, intbd w/ MRL: m-dk gy & blk, frm, brt, sbdr-sbblky, rthy lstr, mot & sb gtry tex, org mat, v calc; scat bent, scat It yel flor, fast string bt ye; cut, bt yel UV sin, It brn WH It sin.

CHK: It gy/brn-crm, occ mgy, sft, brt, sbply-sbblky, dul lstr, v mot tex, v calc w/ occ It yel chk flor, intbd w/ MRL: m-dk gy & blk, frm, brt, sbdr-sbblky, rthy lstr, mot & sb gtry tex, org mat, v calc; scat It yel flor, scat bent, scat It yel flor, string bt ye; cut, bt yel UV sin, It brn WH It sin.

CHK: It gy/brn-crm, occ mgy, sft, brt, sbply-sbblky, dul lstr, v mot tex, v calc w/ occ It yel chk flor, intbd w/ MRL: m-dk gy & blk, frm, brt, sbdr-sbblky, rthy lstr, mot & sb gtry tex, org mat, v calc; scat bent, fast string bt ye; cut, bt yel UV sin, It brn WH It sin.

CHK: It gy/brn-crm, occ mgy, sft, brt, sbply-sbblky, dul lstr, v mot tex, v calc w/ occ It yel chk flor, intbd w/ MRL: m-dk gy & blk, frm, brt, sbdr-sbblky, rthy lstr, mot & sb gtry tex, org mat, v calc; scat bent, scat It yel flor, fast string bt ye; cut, bt yel UV sin, It brn WH It sin.

MD 8.841' Inc 90.25° Azm 356.28° TVD 6608.20'

MD 8.904' Inc 89.57° Azm 359.13° TVD 6608.30'

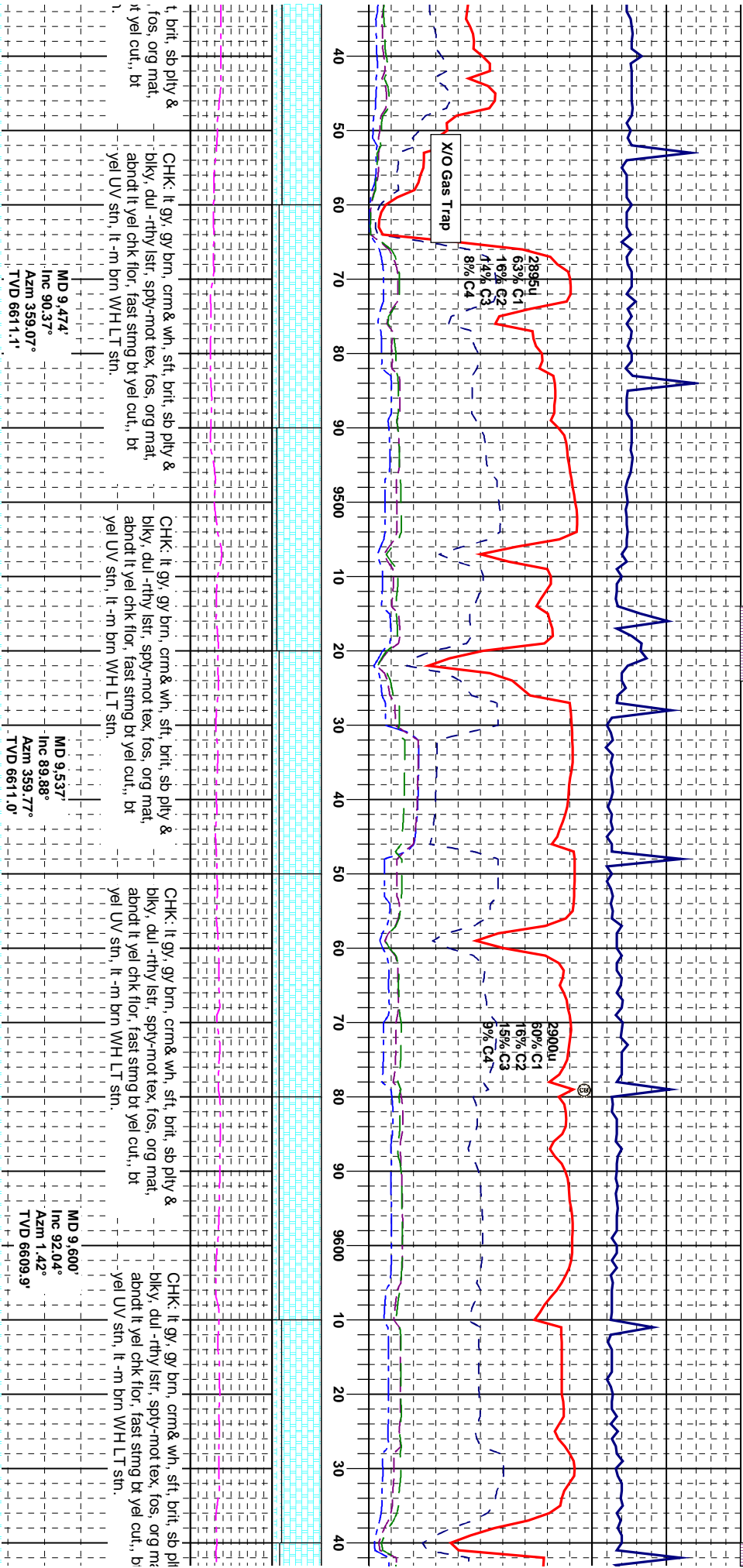
MD 8.967' Inc 89.63° Azm 359.45° TVD 6608.74'

[illegible]

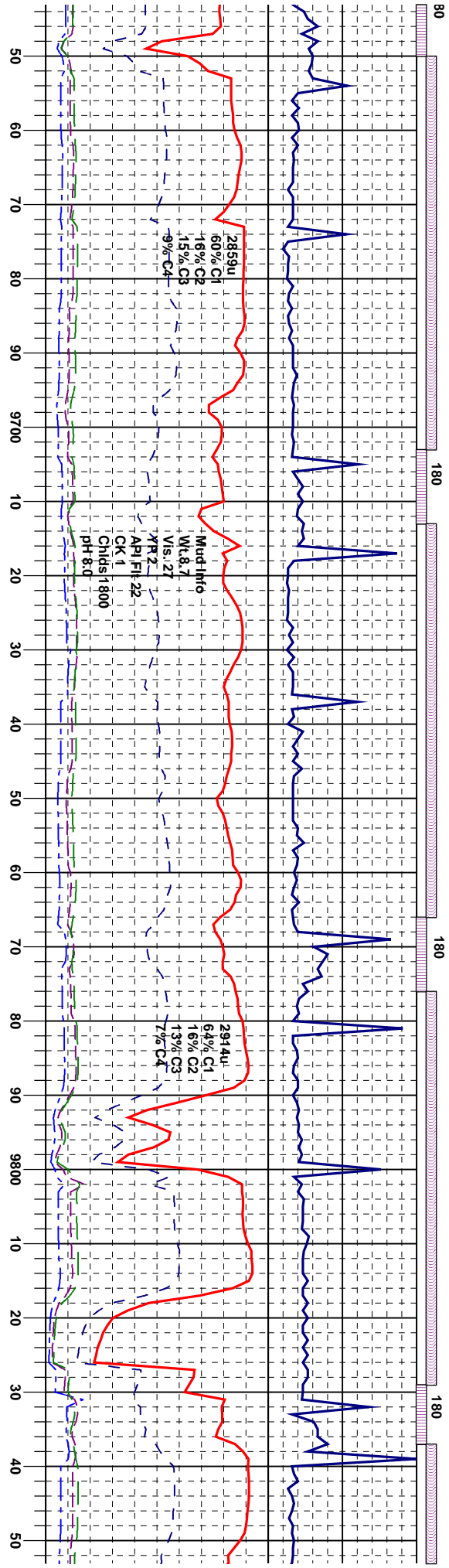
crim, occ
r, v mot t
w/MRL
ky, rthy l
c; scat b
yel cut, t

MD 9,157'
Inc 89.32°
Azim 357.56°
TVD 6609.05'

MD 9,22
Inc 90.21
Azim 357
TV 660



t, brlt, sb ply & fos, org mat, it yel cut., bt	CHK: It gy, gy brn, crm& wh, sft, brlt, sb ply & biky, dul -rthy lstr, spy-mot tex, fos, org mat, abndt it yel chk flor, fast sting bt yel cut., bt yel UV sin, lt -m brn WH LT sin.	CHK: It gy, gy brn, crm& wh, sft, brlt, sb ply & biky, dul -rthy lstr, spy-mot tex, fos, org mat, abndt it yel chk flor, fast sting bt yel cut., bt yel UV sin, lt -m brn WH LT sin.	CHK: It gy, gy brn, crm& wh, sft, brlt, sb ply & biky, dul -rthy lstr, spy-mot tex, fos, org mat, abndt it yel chk flor, fast sting bt yel cut., bt yel UV sin, lt -m brn WH LT sin.	CHK: It gy, gy brn, crm& wh, sft, brlt, sb ply & biky, dul -rthy lstr, spy-mot tex, fos, org mat, abndt it yel chk flor, fast sting bt yel cut., bt yel UV sin, lt -m brn WH LT sin.
---	--	--	--	--



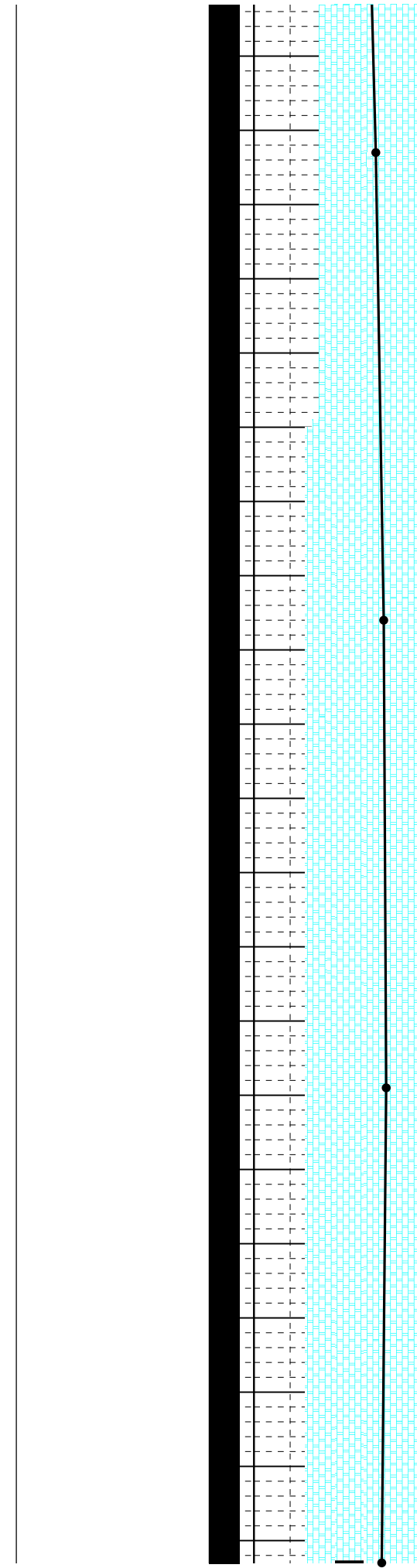
CHK: It gy, gy brn, crm& wh, sft, brit, sb ply & blkly, dul -rthy lstr, spy-mot tex, fos, org mat, abndt it yel chk flor, fast sting bt yel cut., bt yel UV stn, It -m brn WH LT stn.

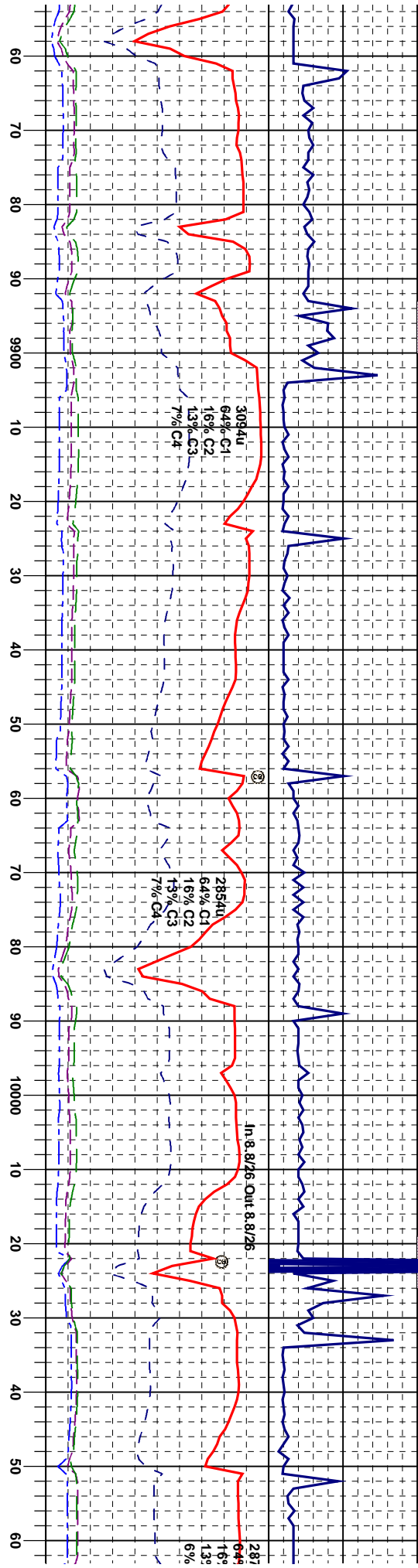
CHK: It gy, gy brn, crm& wh, sft, brit, sb ply & blkly, dul -rthy lstr, spy-mot tex, fos, org mat, abndt it yel chk flor, fast sting bt yel cut., bt yel UV stn, It -m brn WH LT stn.

CHK: It gy, gy brn, crm& wh, sft, brit, sb ply & blkly, dul -rthy lstr, spy-mot tex, fos, org mat, abndt it yel chk flor, fast sting bt yel cut., bt yel UV stn, It -m brn WH LT stn.

CHK: It gy, gy brn, crm& wh, sft, brit, sb ply & blkly, dul -rthy lstr, spy-mot tex, fos, org mat, occ bent gn w/ dism pyr abndt it yel chk flor tr orng, fast sting bt yel cut., bt yel UV stn, It -m brn WH LT stn.

MD 9,663'	Inc 91.05°	Azm 0.57°	TVD 6608.3'
MD 9,726'	Inc 90.93°	Azm 3.8°	TVD 6607.2'
MD 9,789'	Inc 89.69°	Azm 3.8°	TVD 6606.8'
MD 9,814'	Inc 89.2°	Azm 4.1°	TVD 6606





CHK: It gy, gy brn, crm& wh, sft, brt, sb ply & biky, dul -rthy lstr, spy-mot tex, fos, org mat, occ bent gn w/ dism pyr abndt It yel chk flor tr -org, fast sting bt yel cut, bt yel UV sin, It -m brn WHLT sin.

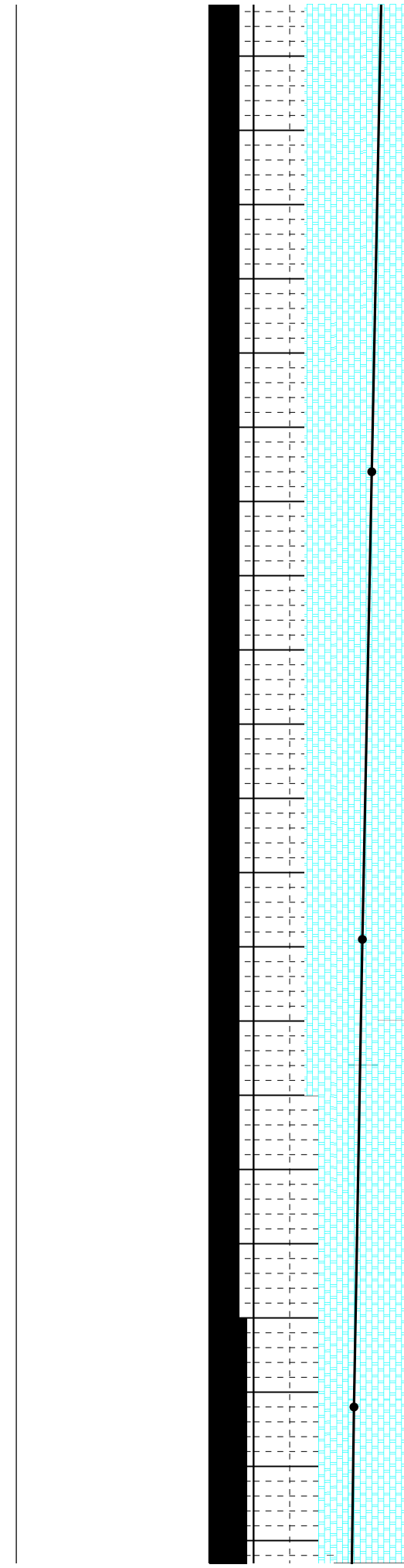
CHK: It gy, gy brn, crm& wh, sft, brt, sb ply & biky, dul -rthy lstr, spy-mot tex, fos, org mat, occ bent gn w/ dism pyr abndt It yel chk flor tr -org, fast sting bt yel cut, bt yel UV sin, It -m brn WHLT sin.

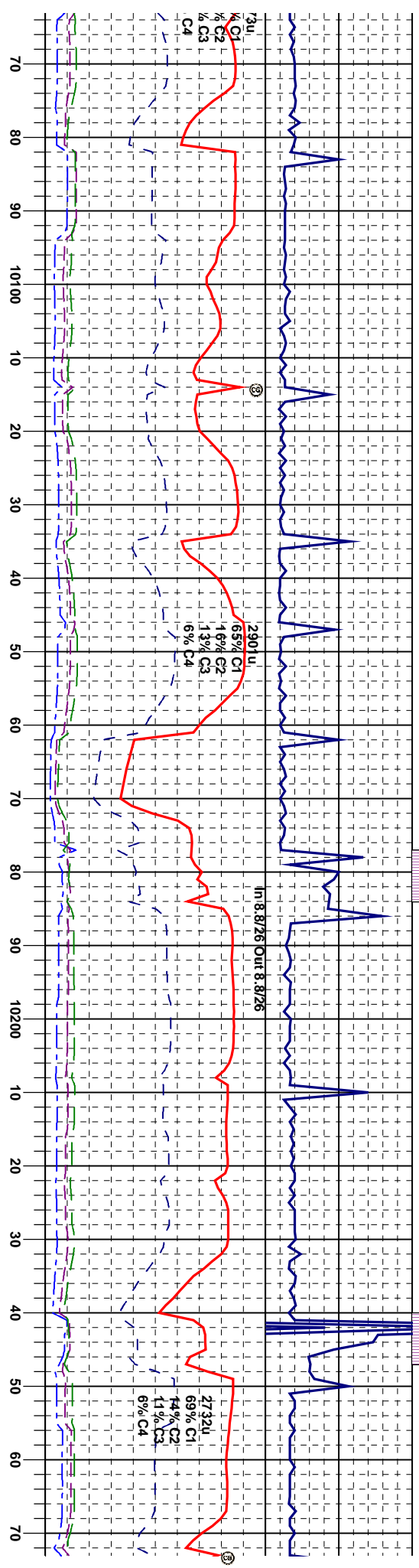
CHK: It gy, gy brn, crm& wh, sft, brt, sb ply & biky, dul -rthy lstr, spy-mot tex, fos, org mat, occ bent gn w/ dism pyr, scat It yel chk flor tr -org, fast sting bt yel cut, bt yel UV sin, It -m brn WHLT sin.

CHK: It gy - gy brn, occ mgy & crm, sft, brt, sb ply & biky, dul -rthy lstr, spy-mot tex, fos, org mat, occ bent gn w/ dism pyr, abndt It yel chk flor tr -org, fast sting bt yel cut, bt yel UV sin, It -m brn WHLT sin.

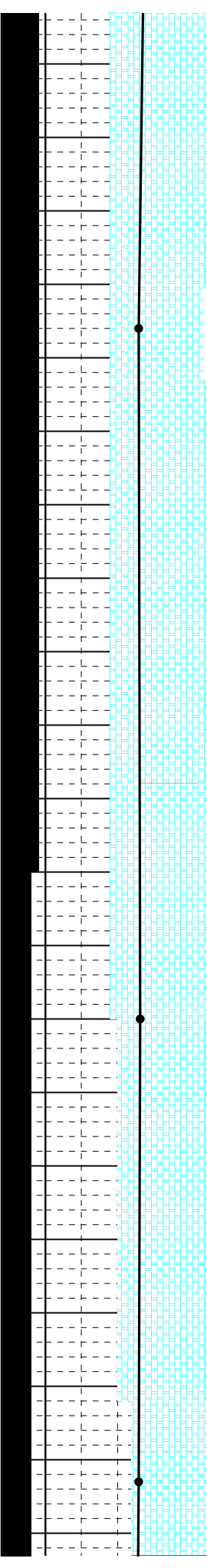
CHK: It gy, sb ply & biky, dul -rthy lstr, spy-mot tex, fos, org mat, occ bent gn w/ dism pyr, abndt It yel chk flor tr -org, fast sting bt yel cut, bt yel UV sin, It -m brn WHLT sin.

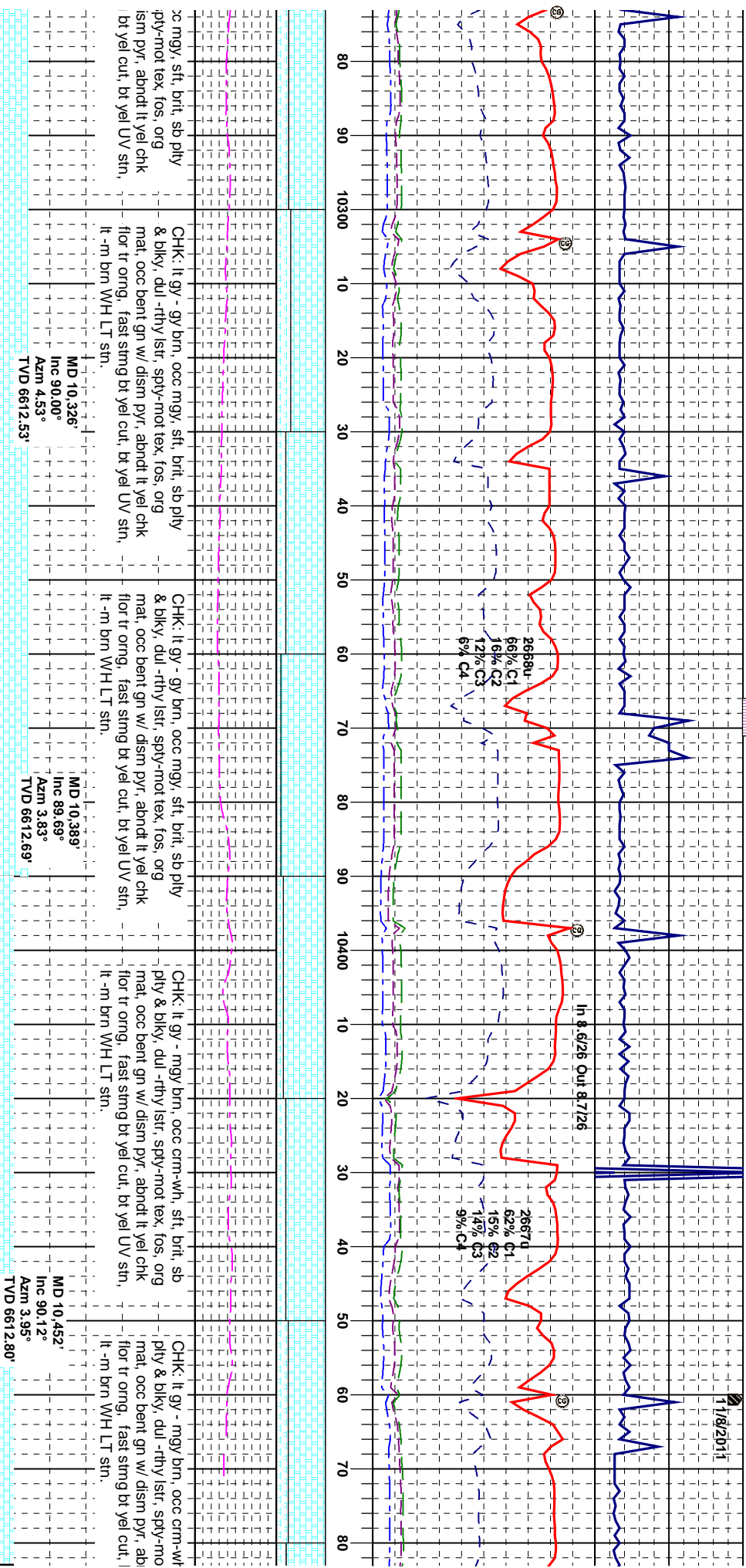
53.2°	MD 9,916'	Inc 88.45°	Azm 4.11°	TVD 6608.7'	MD 9,979'	Inc 89.26°	Azm 3.69°	TVD 6610.01'	MD 10,042'	Inc 88.58°	Azm 3.97°	TVD 6611.20'
35°												
07.45°												





- gy brn, occ mgv & crm, sft, brit, lky, dul -rthy lstr, spy-mot tex, fos, cc bent gn w/ dism pyr, abndt lt yel org, fast string-blmmg bt yel cut, bt , lt -m brn WH LT sin.		CHK: lt gy - gy brn, occ mgv & crm, sft, brit, sb ply & blk, dul -rthy lstr, spy-mot tex, fos, org mat, occ bent gn w/ dism pyr, abndt lt yel chk flr tr org, fast string bt yel cut, bt yel UV sin, lt -m brn WH LT sin.		CHK: lt gy - gy brn, occ mgv & crm, sft, brit, sb ply & blk, dul -rthy lstr, spy-mot tex, fos, org mat, occ bent gn w/ dism pyr, abndt lt yel chk flr tr org, fast string bt yel cut, bt yel UV sin, lt -m brn WH LT sin.		CHK: lt gy - gy brn, occ mgv & crm, sft, brit, & blk, dul -rthy lstr, s mat, occ bent gn w/ d flr tr org, fast string lt -m brn WH LT sin.	
MD 10 106' Inc 89.88° Azm 4.16° TVD 6612.06'				MD 10 200' Inc 90.37° Azm 4.39° TVD 6611.85'		MD 10 263' Inc 89.20° Azm 4.16° TVD 6612.53'	





<<<<< Base Of Target>>>>>

xc mgy, sft, brit, sb plty
pty-mot tex, fos, org
ism pyr, abndt It yel chk
| bt yel cut, bt yel UV stn,

CHK: It gy - gy brn, occ mgy, sft, bit, sb ply & biky, dul -tthy lstr, spty-mot tex, fos, org mat, occ bent gn w/ dism pyr, abndt It yel chk flor tr org, fast stmg br yel cut, br yel UV str, It -m brn WH LT str.

CHK: It gy - gy brn, occ mgy, sft, brft, sb ply & biky, dul -rthy lstr, spty-mot tex, fos, org mat, occ bent gn w/ dism pyr, abndt lt yel chk flwr tr orng, fast stmg bk yel cut, bt yel UV str, lt-m brn WH LT str.

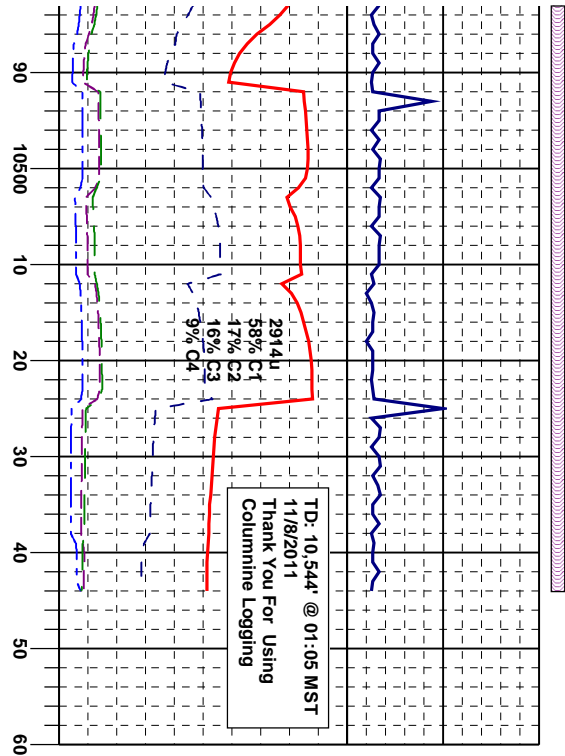
CHk. It gy - mgy brn, ooc crm-wh, sft, brit, sb
ply & bky, dui -rhy/ist, spy-mot tex, fos, org
mat, ooc bent gn w/ dism pyr, abndt It yel chk
flor It oong, fast stimg bt yel cut, bt yel UV stn,
It-m brn WH LT stn.

CHK: It gy -mgy brn, occ crm-wr-
-ply & blkly, dul -rthy lstr, sply-mo-
-mat, occ bent gn w/ dism pyr, ab-
-flor tr orng, fast stng bt yel cut, |
lt -m brn WH LT str.

MD 10,326'
Inc 90.00°
Azim 4.53°
TVD 6612.53

MD 10,389'
Inc 89.69°
Azm 3.83°
TVD 6612.69'

MD 10,452'
Inc 90.12°
Azim 3.95°
TVD 6612.80'



1, sft, brt, sb
t tex, fos, org
ndt it yel chk
bt yel UV sn,
it -m brn WH LT sn.

CHK: It gy - mgy brn, occ crm-wh, sft, brt, sb
ply & bkly, dul -rthy lstr, spy-mot tex, fos, org
mat, occ bent gn w/ dism pyf, abndt it yel chk
flor tr orng, fast smg bt yel cut, bt yel UV sn,
it -m brn WH LT sn.

MD 10,504'
Inc 91.17°
Azim 4.24°
TVD 6612.22'

SLPTB
MD 10,544'
Inc 91.17°
Azim 4.24°
TVD 6611.4'

