

FOUND REBAR &
ALUM CAP
PLS# 22098

FOUND REBAR &
ALUM CAP
PLS# 7735

BHL STATE ANTELOPE 14-11-24HZ
LAT.= 40.39197°
LON.= -104.27820°
460.0'FNL, 660.0'FWL
4409.82' horizontal
3 10750°

NW 1/4

NE 1/4

STOCK
PENS

BASIS OF BEARINGS IS
THE SOUTH LINE OF
SEC. 24, T5N, R62W OF
THE 6TH P.M. WELD COUNTY,
CO. BEARS S88°20'11"W
BETWEEN FOUND MONUMENTS.
DETERMINED BY GPS (NAD 83)

BASIS OF ELEVATION IS
U.S.G.S. POINT CB-3
BY DIFFERENTIAL GPS

BEARINGS AND DISTANCES
SHOWN ARE FIELD MEASURED
AND THE LOCATION DISTANCES
ARE AT RIGHT ANGLES FROM
THE NEAREST NORTH-SOUTH AND
EAST-WEST SECTION LINES.

N

```
-TARGET 1
LAT.= 40.37989°
LON.=-104.27928°
460.0'FSL, 460.0'FWL
915.61' horizontal
284.6511°
```

SW 1/4

SHL STATE ANTELOPE 14-11-24HZ
LAT. = 40.37922°
LON. = -104.27611°
202.8'FSL, 1347.9'FWL
EL. = 4562.30'
PDOP = 2.437

SE 1/4

FOUND REBAR &
ALUM CAP
PLS# 22098

S88°20'11"W 5375.73'

FOUND REBAR &
ALUM CAP
PLS# 7735
NOT ACCEPTED

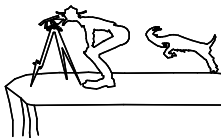
FOUND REBAR &
ALUM CAP
PLS# 22098

I HEREBY CERTIFY THAT THIS PLAT IS
AN ACCURATE REPRESENTATION OF A
CORRECT SURVEY SHOWING THE
LOCATION OF SAID WELLSITE:

Dan Griggs PLS# 38018

CONTRACT SURVEYORS, LTD.
COMPLETE SURVEYING AND GLOBAL POSITIONING

2133 SOUTH BELLAIRE STREET #14
DENVER COLORADO 80222
(303) 756-3695



DATE OF FIELD WORK:

DECEMBER 6, 2011

DATE OF DRAWING:

DECEMBER 9, 2011

STATE ANTELOPE 14-11-24 HZ

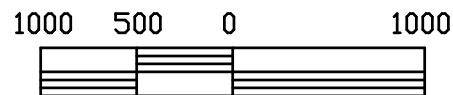
SE 1/4 SW 1/4 SEC. 24, T5N, R62W

BONANZA CREEK ENERGY OPERATING COMPANY, LLC

WELD COUNTY, COLORADO

PAGE 1

CSL# 11104-67



Scale 1" = 1000'