

# ANADARKO E&P COMPANY LP

Location: COLORADO Slot: SLOT#05 POWERS 28C-23HZ (225'FSL & 1621'FEL, SEC.23)  
Field: WELD COUNTY (KERR MCGEE) Well: POWERS 28C-23HZ  
Facility: SEC.23-T2N-R65W Wellbore: POWERS 28C-23HZ PWB

Plot reference wellpath is POWERS 28C-23HZ (REV-B.0) PWP

True vertical depths are referenced to XTREME 6 (RKB)

Grid System: NAD83 / Lambert Colorado SP, Northern Zone (501), US feet

Measured depths are referenced to XTREME 6 (RKB)

North Reference: True north

XTREME 6 (RKB) to Mean Sea Level: 4924 feet

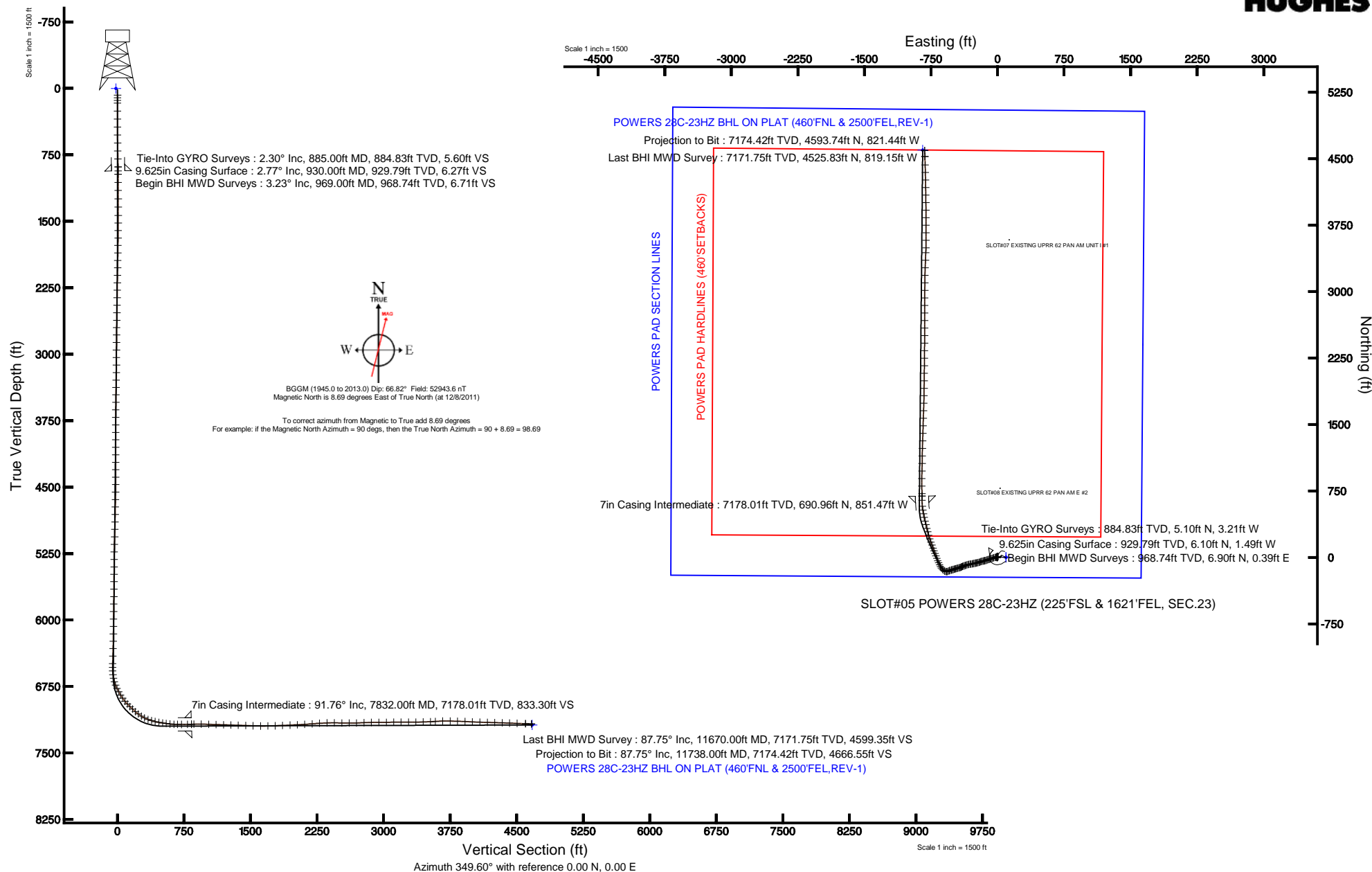
Scale: True distance

Mean Sea Level to Mud line (At Slot: SLOT#05 POWERS 28C-23HZ (225'FSL & 1621'FEL, SEC.23)): 0 feet

Depths are in feet

Coordinates are in feet referenced to Slot

Created by: wilsje02 on 1/31/2012





# Actual Wellpath Report

POWERS 28C-23HZ AWP

Page 1 of 5



## REFERENCE WELLPATH IDENTIFICATION

Operator	ANADARKO E&P COMPANY LP	Slot	SLOT#05 POWERS 28C-23HZ (225'FSL & 1621'FEL, SEC.23)
Area	COLORADO	Well	POWERS 28C-23HZ
Field	WELD COUNTY (KERR MCGEE)	Wellbore	POWERS 28C-23HZ AWB
Facility	SEC.23-T2N-R65W		

## REPORT SETUP INFORMATION

Projection System	NAD83 / Lambert Colorado SP, Northern Zone (501), US feet	Software System	WellArchitect® 3.0.2
North Reference	True	User	Wilsjef02
Scale	0.99996	Report Generated	1/31/2012 at 10:20:03 AM
Convergence at slot	0.56° East	Database/Source file	WA_ANADARKO/POWERS_28C-23HZ_AWB.xml

## WELLPATH LOCATION

	Local coordinates		Grid coordinates		Geographic coordinates	
	North[ft]	East[ft]	Easting[US ft]	Northing[US ft]	Latitude	Longitude
Slot Location	0.61	-95.95	3243996.09	1286819.76	40°07'02.705"N	104°37'39.169"W
Facility Reference Pt			3244092.03	1286820.09	40°07'02.699"N	104°37'37.934"W
Field Reference Pt			3197771.84	1268891.29	40°04'09.600"N	104°47'36.000"W

## WELLPATH DATUM

Calculation method	Minimum curvature	XTREME 6 (RKB) to Facility Vertical Datum	4924.00ft
Horizontal Reference Pt	Slot	XTREME 6 (RKB) to Mean Sea Level	4924.00ft
Vertical Reference Pt	XTREME 6 (RKB)	XTREME 6 (RKB) to Mud Line at Slot (SLOT#05 POWERS 28C-23HZ (225'FSL & 1621'FEL, SEC.23))	4924.00ft
MD Reference Pt	XTREME 6 (RKB)	Section Origin	N 0.00, E 0.00 ft
Field Vertical Reference	Mean Sea Level	Section Azimuth	349.60°



# Actual Wellpath Report

POWERS 28C-23HZ AWP

Page 2 of 5



REFERENCE WELLPATH IDENTIFICATION			
Operator	ANADARKO E&P COMPANY LP	Slot	SLOT#05 POWERS 28C-23HZ (225'FSL & 1621'FEL, SEC.23)
Area	COLORADO	Well	POWERS 28C-23HZ
Field	WELD COUNTY (KERR MCGEE)	Wellbore	POWERS 28C-23HZ AWB
Facility	SEC.23-T2N-R65W		

## WELLPATH DATA (144 stations)

MD [ft]	Inclination [°]	Azimuth [°]	TVD [ft]	Vert Sect [ft]	North [ft]	East [ft]	Latitude	Longitude	DLS [°/100ft]	Comments
885.00	2.300	54.420	884.83	5.60	5.10	-3.21	40°07'02.755"N	104°37'39.210"W	0.80	Tie-Into GYRO Surveys
969.00	3.230	69.870	968.74	6.71	6.90	0.39	40°07'02.773"N	104°37'39.164"W	1.41	Begin BHI MWD Surveys
1061.00	1.940	78.890	1060.64	7.17	8.09	4.35	40°07'02.785"N	104°37'39.113"W	1.47	
1152.00	0.660	67.070	1151.62	7.30	8.59	6.34	40°07'02.790"N	104°37'39.087"W	1.43	
1246.00	0.860	264.220	1245.61	7.48	8.73	6.14	40°07'02.791"N	104°37'39.090"W	1.60	
1338.00	1.060	263.970	1337.60	7.60	8.57	4.61	40°07'02.790"N	104°37'39.110"W	0.22	
1433.00	1.140	246.620	1432.58	7.45	8.10	2.87	40°07'02.785"N	104°37'39.132"W	0.36	
1519.00	2.340	263.890	1518.54	7.39	7.58	0.33	40°07'02.780"N	104°37'39.165"W	1.51	
1604.00	4.280	248.880	1603.40	6.93	6.25	-4.35	40°07'02.767"N	104°37'39.225"W	2.48	
1689.00	5.440	253.770	1688.09	5.93	3.98	-11.18	40°07'02.744"N	104°37'39.313"W	1.45	
1772.00	7.050	251.890	1770.60	4.85	1.30	-19.80	40°07'02.718"N	104°37'39.424"W	1.96	
1858.00	7.680	252.140	1855.89	3.39	-2.11	-30.28	40°07'02.684"N	104°37'39.559"W	0.73	
1943.00	7.430	253.100	1940.15	2.03	-5.45	-40.95	40°07'02.651"N	104°37'39.696"W	0.33	
2028.00	8.040	251.500	2024.37	0.57	-8.93	-51.84	40°07'02.617"N	104°37'39.836"W	0.76	
2113.00	7.820	250.660	2108.56	-1.16	-12.73	-62.94	40°07'02.579"N	104°37'39.979"W	0.29	
2198.00	6.690	254.450	2192.88	-2.51	-15.97	-73.16	40°07'02.547"N	104°37'40.111"W	1.44	
2283.00	6.590	251.420	2277.31	-3.64	-18.86	-82.56	40°07'02.519"N	104°37'40.232"W	0.43	
2368.00	5.990	252.310	2361.80	-4.90	-21.76	-91.40	40°07'02.490"N	104°37'40.346"W	0.72	
2453.00	6.290	251.610	2446.31	-6.11	-24.57	-100.05	40°07'02.462"N	104°37'40.457"W	0.36	
2539.00	5.750	250.030	2531.84	-7.48	-27.53	-108.57	40°07'02.433"N	104°37'40.566"W	0.66	
2624.00	6.170	251.630	2616.38	-8.82	-30.43	-116.91	40°07'02.404"N	104°37'40.674"W	0.53	
2707.00	6.030	246.670	2698.91	-10.42	-33.56	-125.14	40°07'02.373"N	104°37'40.780"W	0.66	
2792.00	7.090	257.820	2783.35	-11.58	-36.43	-134.37	40°07'02.345"N	104°37'40.899"W	1.94	
2877.00	6.860	257.150	2867.72	-11.96	-38.67	-144.45	40°07'02.323"N	104°37'41.028"W	0.29	
2963.00	6.120	256.580	2953.17	-12.42	-40.87	-153.91	40°07'02.301"N	104°37'41.150"W	0.86	
3048.00	6.040	259.810	3037.69	-12.64	-42.72	-162.72	40°07'02.283"N	104°37'41.264"W	0.41	
3133.00	6.420	261.220	3122.19	-12.49	-44.23	-171.82	40°07'02.268"N	104°37'41.381"W	0.48	
3218.00	6.640	249.240	3206.64	-13.24	-46.70	-181.11	40°07'02.243"N	104°37'41.500"W	1.62	
3304.00	6.350	245.680	3292.09	-15.28	-50.42	-190.10	40°07'02.207"N	104°37'41.616"W	0.58	
3387.00	6.910	252.360	3374.54	-17.02	-53.83	-199.04	40°07'02.173"N	104°37'41.731"W	1.15	
3471.00	6.700	251.210	3457.95	-18.37	-56.94	-208.49	40°07'02.142"N	104°37'41.853"W	0.30	
3557.00	7.310	256.300	3543.30	-19.41	-59.85	-218.56	40°07'02.114"N	104°37'41.982"W	1.01	
3642.00	6.500	254.670	3627.69	-20.14	-62.40	-228.45	40°07'02.088"N	104°37'42.110"W	0.98	
3727.00	6.510	261.370	3712.14	-20.40	-64.39	-237.85	40°07'02.069"N	104°37'42.231"W	0.89	
3813.00	6.560	260.340	3797.58	-20.19	-65.95	-247.52	40°07'02.053"N	104°37'42.355"W	0.15	
3898.00	6.850	254.910	3882.00	-20.54	-68.08	-257.20	40°07'02.032"N	104°37'42.480"W	0.82	
3983.00	6.800	254.660	3966.40	-21.39	-70.74	-266.94	40°07'02.006"N	104°37'42.605"W	0.07	
4069.00	6.740	261.190	4051.80	-21.69	-72.86	-276.84	40°07'01.985"N	104°37'42.732"W	0.90	
4154.00	8.120	259.670	4136.09	-21.54	-74.70	-287.68	40°07'01.967"N	104°37'42.872"W	1.64	
4239.00	7.730	263.890	4220.27	-21.11	-76.38	-299.27	40°07'01.950"N	104°37'43.021"W	0.82	
4323.00	7.350	261.220	4303.55	-20.54	-77.80	-310.19	40°07'01.936"N	104°37'43.162"W	0.62	
4408.00	7.970	260.400	4387.79	-20.34	-79.65	-321.37	40°07'01.918"N	104°37'43.306"W	0.75	
4493.00	7.950	254.450	4471.97	-20.82	-82.25	-332.84	40°07'01.892"N	104°37'43.453"W	0.91	
4577.00	7.660	251.700	4555.19	-22.11	-85.56	-343.75	40°07'01.859"N	104°37'43.594"W	0.56	
4663.00	7.570	252.240	4640.44	-23.62	-89.09	-354.59	40°07'01.825"N	104°37'43.733"W	0.13	
4748.00	7.490	251.330	4724.70	-25.14	-92.57	-365.17	40°07'01.790"N	104°37'43.869"W	0.17	
4833.00	6.760	252.270	4809.05	-26.57	-95.87	-375.18	40°07'01.758"N	104°37'43.998"W	0.87	
4918.00	6.960	249.030	4893.44	-28.16	-99.23	-384.76	40°07'01.724"N	104°37'44.121"W	0.51	
5003.00	5.570	245.240	4977.93	-30.12	-102.81	-393.31	40°07'01.689"N	104°37'44.232"W	1.71	
5088.00	5.610	239.910	5062.52	-32.55	-106.62	-400.65	40°07'01.651"N	104°37'44.326"W	0.61	
5173.00	6.900	242.810	5147.02	-35.42	-111.03	-408.79	40°07'01.608"N	104°37'44.431"W	1.56	
5259.00	6.980	249.780	5232.39	-37.81	-115.20	-418.29	40°07'01.567"N	104°37'44.553"W	0.98	
5344.00	6.400	256.150	5316.81	-38.97	-118.12	-427.73	40°07'01.538"N	104°37'44.675"W	1.11	
5429.00	6.470	258.000	5401.27	-39.39	-120.25	-437.02	40°07'01.517"N	104°37'44.794"W	0.26	
5514.00	6.110	257.440	5485.76	-39.70	-122.23	-446.12	40°07'01.497"N	104°37'44.911"W	0.43	
5597.00	5.890	257.160	5568.31	-40.04	-124.13	-454.58	40°07'01.478"N	104°37'45.020"W	0.27	
5681.00	6.020	251.600	5651.86	-40.84	-126.48	-462.96	40°07'01.455"N	104°37'45.128"W	0.70	
5766.00	6.710	255.140	5736.33	-41.85	-129.16	-471.99	40°07'01.429"N	104°37'45.244"W	0.93	
5851.00	6.180	249.210	5820.79	-43.06	-132.06	-481.07	40°07'01.400"N	104°37'45.361"W	1.00	
5936.00	6.390	249.660	5905.28	-44.70	-135.33	-489.78	40°07'01.368"N	104°37'45.473"W	0.25	



# Actual Wellpath Report

POWERS 28C-23HZ AWP

Page 3 of 5



## REFERENCE WELLPATH IDENTIFICATION

Operator	ANADARKO E&P COMPANY LP	Slot	SLOT#05 POWERS 28C-23HZ (225'FSL & 1621'FEL, SEC.23)
Area	COLORADO	Well	POWERS 28C-23HZ
Field	WELD COUNTY (KERR MCGEE)	Wellbore	POWERS 28C-23HZ AWB
Facility	SEC.23-T2N-R65W		

## WELLPATH DATA (144 stations) † = interpolated/extrapolated station

MD [ft]	Inclination [°]	Azimuth [°]	TVD [ft]	Vert Sect [ft]	North [ft]	East [ft]	Latitude	Longitude	DLS [°/100ft]	Comments
6021.00	6.890	253.610	5989.71	-46.05	-138.41	-499.11	40°07'01.337"N	104°37'45.593"W	0.80	
6106.00	7.510	257.010	6074.04	-46.83	-141.10	-509.41	40°07'01.311"N	104°37'45.726"W	0.88	
6190.00	7.660	255.310	6157.31	-47.50	-143.75	-520.18	40°07'01.284"N	104°37'45.865"W	0.32	
6273.00	7.720	250.430	6239.56	-48.80	-147.02	-530.78	40°07'01.252"N	104°37'46.001"W	0.79	
6358.00	7.490	249.940	6323.82	-50.64	-150.83	-541.36	40°07'01.214"N	104°37'46.137"W	0.28	
6443.00	7.790	246.290	6408.06	-52.90	-155.05	-551.84	40°07'01.173"N	104°37'46.272"W	0.67	
6529.00	8.560	248.430	6493.19	-55.48	-159.75	-563.13	40°07'01.126"N	104°37'46.417"W	0.96	
6571.00	8.500	251.430	6534.72	-56.53	-161.89	-568.98	40°07'01.105"N	104°37'46.493"W	1.07	
6613.00	10.710	277.600	6576.15	-55.76	-162.36	-575.79	40°07'01.100"N	104°37'46.580"W	11.51	
6656.00	15.580	284.630	6618.01	-52.08	-160.37	-585.35	40°07'01.120"N	104°37'46.703"W	11.90	
6699.00	18.730	297.470	6659.11	-45.40	-155.72	-597.07	40°07'01.166"N	104°37'46.854"W	11.42	
6741.00	21.470	306.390	6698.56	-35.65	-148.05	-609.24	40°07'01.242"N	104°37'47.011"W	9.77	
6783.00	25.250	316.430	6737.12	-22.54	-136.99	-621.61	40°07'01.351"N	104°37'47.170"W	13.04	
6825.00	28.950	326.600	6774.53	-5.67	-122.00	-633.39	40°07'01.499"N	104°37'47.322"W	14.09	
6868.00	29.540	331.760	6812.05	14.00	-103.97	-644.14	40°07'01.677"N	104°37'47.460"W	6.02	
6910.00	31.470	335.410	6848.24	34.49	-84.88	-653.60	40°07'01.866"N	104°37'47.582"W	6.37	
6953.00	35.340	335.210	6884.13	57.43	-63.37	-663.49	40°07'02.079"N	104°37'47.709"W	9.00	
6996.00	39.790	337.070	6918.21	82.92	-39.40	-674.07	40°07'02.316"N	104°37'47.845"W	10.68	
7038.00	44.430	338.760	6949.36	110.49	-13.30	-684.64	40°07'02.573"N	104°37'47.982"W	11.37	
7080.00	46.550	339.980	6978.80	139.97	14.73	-695.19	40°07'02.850"N	104°37'48.117"W	5.46	
7121.00	46.350	340.170	7007.05	169.27	42.66	-705.31	40°07'03.127"N	104°37'48.248"W	0.59	
7164.00	49.240	341.170	7035.93	200.73	72.72	-715.85	40°07'03.424"N	104°37'48.383"W	6.94	
7206.00	53.410	339.420	7062.17	233.08	103.57	-726.92	40°07'03.728"N	104°37'48.526"W	10.45	
7249.00	58.600	339.700	7086.21	268.17	136.97	-739.36	40°07'04.058"N	104°37'48.686"W	12.08	
7291.00	63.840	340.420	7106.42	304.46	171.56	-751.90	40°07'04.400"N	104°37'48.847"W	12.57	
7334.00	69.110	342.130	7123.58	343.46	208.89	-764.55	40°07'04.769"N	104°37'49.010"W	12.79	
7376.00	74.090	344.360	7136.83	383.05	247.04	-776.02	40°07'05.146"N	104°37'49.158"W	12.88	
7419.00	76.280	345.030	7147.83	424.47	287.14	-786.99	40°07'05.542"N	104°37'49.299"W	5.31	
7461.00	80.120	346.150	7156.42	465.47	326.95	-797.22	40°07'05.936"N	104°37'49.431"W	9.51	
7504.00	81.500	346.650	7163.28	507.85	368.20	-807.20	40°07'06.344"N	104°37'49.559"W	3.41	
7546.00	81.800	346.920	7169.38	549.36	408.66	-816.70	40°07'06.743"N	104°37'49.681"W	0.96	
7589.00	82.680	347.260	7175.19	591.92	450.19	-826.22	40°07'07.154"N	104°37'49.804"W	2.19	
7632.00	87.650	348.910	7178.81	634.74	492.10	-835.06	40°07'07.568"N	104°37'49.918"W	12.17	
7674.00	89.500	350.360	7179.86	676.72	533.40	-842.61	40°07'07.976"N	104°37'50.015"W	5.60	
7717.00	90.240	355.680	7179.95	719.63	576.06	-847.83	40°07'08.398"N	104°37'50.082"W	12.49	
7785.00	91.070	359.290	7179.18	786.97	643.98	-850.82	40°07'09.069"N	104°37'50.121"W	5.45	
7832.00†	91.762	359.106	7178.01	833.30	690.96	-851.47	40°07'09.533"N	104°37'50.129"W	1.52	7" Casing Point
7859.00	92.160	359.000	7177.09	859.92	717.94	-851.92	40°07'09.800"N	104°37'50.135"W	1.52	
7944.00	88.890	359.050	7176.31	943.76	802.91	-853.37	40°07'10.639"N	104°37'50.154"W	3.85	
8030.00	87.860	0.650	7178.75	1028.35	888.87	-853.59	40°07'11.489"N	104°37'50.157"W	2.21	
8115.00	88.550	1.440	7181.41	1111.61	973.82	-852.04	40°07'12.328"N	104°37'50.137"W	1.23	
8200.00	88.400	1.090	7183.68	1194.83	1058.77	-850.17	40°07'13.168"N	104°37'50.113"W	0.45	
8285.00	87.590	0.970	7186.65	1278.09	1143.70	-848.64	40°07'14.007"N	104°37'50.093"W	0.96	
8370.00	88.300	1.110	7189.70	1361.35	1228.63	-847.10	40°07'14.846"N	104°37'50.073"W	0.85	
8455.00	88.040	2.440	7192.41	1444.39	1313.54	-844.47	40°07'15.685"N	104°37'50.039"W	1.59	
8541.00	87.740	1.530	7195.58	1528.34	1399.43	-841.49	40°07'16.534"N	104°37'50.001"W	1.11	
8626.00	89.410	1.530	7197.69	1611.47	1484.37	-839.22	40°07'17.374"N	104°37'49.972"W	1.96	
8711.00	91.070	1.570	7197.34	1694.63	1569.34	-836.92	40°07'18.213"N	104°37'49.942"W	1.95	
8796.00	92.130	2.810	7194.96	1777.55	1654.24	-833.68	40°07'19.052"N	104°37'49.901"W	1.92	
8881.00	92.080	1.400	7191.84	1860.47	1739.12	-830.56	40°07'19.891"N	104°37'49.860"W	1.66	
8966.00	93.420	0.590	7187.76	1943.70	1824.01	-829.08	40°07'20.730"N	104°37'49.841"W	1.84	
9051.00	92.090	0.890	7183.68	2027.00	1908.90	-827.98	40°07'21.569"N	104°37'49.827"W	1.60	
9136.00	93.850	0.600	7179.27	2110.28	1993.78	-826.88	40°07'22.408"N	104°37'49.813"W	2.10	
9221.00	94.490	0.810	7173.09	2193.47	2078.55	-825.84	40°07'23.245"N	104°37'49.800"W	0.79	
9306.00	93.660	0.360	7167.05	2276.70	2163.33	-824.97	40°07'24.083"N	104°37'49.789"W	1.11	
9392.00	92.030	0.950	7162.78	2361.00	2249.21	-823.99	40°07'24.932"N	104°37'49.776"W	2.02	
9477.00	89.160	0.230	7161.90	2444.43	2334.19	-823.11	40°07'25.772"N	104°37'49.765"W	3.48	
9562.00	88.920	1.000	7163.33	2527.85	2419.18	-822.20	40°07'26.611"N	104°37'49.753"W	0.95	
9647.00	89.350	0.160	7164.61	2611.28	2504.16	-821.34	40°07'27.451"N	104°37'49.742"W	1.11	
9732.00	92.400	359.790	7163.31	2694.87	2589.14	-821.38	40°07'28.291"N	104°37'49.743"W	3.61	



# Actual Wellpath Report

POWERS 28C-23HZ AWP

Page 4 of 5



## REFERENCE WELLPATH IDENTIFICATION

Operator	ANADARKO E&P COMPANY LP	Slot	SLOT#05 POWERS 28C-23HZ (225'FSL & 1621'FEL, SEC.23)
Area	COLORADO	Well	POWERS 28C-23HZ
Field	WELD COUNTY (KERR MCGEE)	Wellbore	POWERS 28C-23HZ AWB
Facility	SEC.23-T2N-R65W		

## WELLPATH DATA (144 stations)

MD [ft]	Inclination [°]	Azimuth [°]	TVD [ft]	Vert Sect [ft]	North [ft]	East [ft]	Latitude	Longitude	DLS [°/100ft]	Comments
9817.00	91.840	0.020	7160.17	2778.44	2674.08	-821.52	40°07'29.130"N	104°37'49.745"W	0.71	
9902.00	91.560	0.060	7157.64	2862.00	2759.04	-821.46	40°07'29.970"N	104°37'49.744"W	0.33	
9987.00	90.180	0.490	7156.35	2945.52	2844.03	-821.05	40°07'30.810"N	104°37'49.739"W	1.70	
10073.00	90.490	0.010	7155.85	3030.03	2930.03	-820.68	40°07'31.660"N	104°37'49.734"W	0.66	
10158.00	91.410	0.550	7154.44	3113.55	3015.01	-820.26	40°07'32.500"N	104°37'49.728"W	1.25	
10243.00	89.900	0.470	7153.47	3197.01	3100.00	-819.51	40°07'33.339"N	104°37'49.719"W	1.78	
10328.00	90.000	1.300	7153.54	3280.36	3184.99	-818.19	40°07'34.179"N	104°37'49.702"W	0.98	
10413.00	89.900	2.040	7153.62	3363.48	3269.96	-815.72	40°07'35.019"N	104°37'49.670"W	0.88	
10498.00	91.830	2.190	7152.34	3446.45	3354.88	-812.58	40°07'35.858"N	104°37'49.630"W	2.28	
10583.00	92.860	2.650	7148.86	3529.26	3439.74	-808.99	40°07'36.697"N	104°37'49.584"W	1.33	
10637.00	93.110	1.900	7146.05	3581.87	3493.62	-806.85	40°07'37.229"N	104°37'49.556"W	1.46	
10722.00	91.860	359.720	7142.36	3665.17	3578.52	-805.65	40°07'38.068"N	104°37'49.541"W	2.95	
10808.00	88.550	359.570	7142.05	3749.84	3664.51	-806.19	40°07'38.918"N	104°37'49.548"W	3.85	
10893.00	88.360	359.810	7144.34	3833.49	3749.48	-806.65	40°07'39.758"N	104°37'49.553"W	0.36	
10978.00	87.870	359.900	7147.14	3917.09	3834.43	-806.86	40°07'40.597"N	104°37'49.556"W	0.59	
11063.00	86.480	359.750	7151.33	4000.64	3919.33	-807.12	40°07'41.436"N	104°37'49.560"W	1.64	
11148.00	88.770	359.290	7154.85	4084.29	4004.24	-807.83	40°07'42.275"N	104°37'49.569"W	2.75	
11234.00	88.610	359.190	7156.82	4169.05	4090.21	-808.97	40°07'43.125"N	104°37'49.584"W	0.22	
11319.00	88.210	358.910	7159.18	4252.87	4175.17	-810.38	40°07'43.964"N	104°37'49.602"W	0.57	
11404.00	87.810	359.080	7162.13	4336.67	4260.10	-811.87	40°07'44.804"N	104°37'49.621"W	0.51	
11489.00	88.180	358.500	7165.10	4420.53	4345.03	-813.66	40°07'45.643"N	104°37'49.644"W	0.81	
11574.00	87.840	358.250	7168.05	4504.49	4429.95	-816.07	40°07'46.482"N	104°37'49.675"W	0.50	
11670.00	87.750	358.070	7171.75	4599.35	4525.83	-819.15	40°07'47.430"N	104°37'49.715"W	0.21	Last BHI MWD Survey
11738.00	87.750	358.070	7174.42	4666.55	4593.74	-821.44	40°07'48.101"N	104°37'49.744"W	0.00	Projection to Bit

## HOLE & CASING SECTIONS - Ref Wellbore: POWERS 28C-23HZ AWB Ref Wellpath: POWERS 28C-23HZ AWP

String/Diameter	Start MD [ft]	End MD [ft]	Interval [ft]	Start TVD [ft]	End TVD [ft]	Start N/S [ft]	Start E/W [ft]	End N/S [ft]	End E/W [ft]
13.5in Open Hole	16.00	930.00	914.00	16.00	929.79	-0.12	-0.64	6.10	-1.49
9.625in Casing Surface	16.00	930.00	914.00	16.00	929.79	-0.12	-0.64	6.10	-1.49
8.75in Open Hole	930.00	7843.00	6913.00	929.79	7177.66	6.10	-1.49	701.95	-851.65
7in Casing Intermediate	16.00	7832.00	7816.00	16.00	7178.01	-0.12	-0.64	690.96	-851.47
6.125in Open Hole	7832.00	11738.00	3906.00	7178.01	7174.42	690.96	-851.47	4593.74	-821.44

## TARGETS

Name	MD [ft]	TVD [ft]	North [ft]	East [ft]	Grid East [US ft]	Grid North [US ft]	Latitude	Longitude	Shape
POWERS PAD SECTION LINES		0.00	-0.71	95.95	3244092.03	1286819.99	40°07'02.698"N	104°37'37.934"W	polygon
POWERS PAD HARDLINES (460'SETBACKS)		7172.00	-0.71	95.95	3244092.03	1286819.99	40°07'02.698"N	104°37'37.934"W	polygon
POWERS 28C-23HZ BHL ON PLAT (460'FNL & 2500'FEL,REV-1)		7186.00	4598.83	-843.94	3243106.98	1291409.86	40°07'48.151"N	104°37'50.034"W	point

## WELLPATH COMPOSITION - Ref Wellbore: POWERS 28C-23HZ AWB Ref Wellpath: POWERS 28C-23HZ AWP

Start MD [ft]	End MD [ft]	Positional Uncertainty Model	Log Name/Comment	Wellbore
75.00	885.00	Gyrodata standard - Drop gyro or Multi-shot	GYRO SURVEYS <105-885>	POWERS 28C-23HZ AWB
885.00	7785.00	NaviTrak (Standard)	BHI MWD SURVEYS 8 3/4" HOLE <969-7785>	POWERS 28C-23HZ AWB
7785.00	11670.00	OnTrak (Standard)	BHI MWD SURVEYS 6 1/8" HOLE <7859-11670>	POWERS 28C-23HZ AWB
11670.00	11738.00	Blind Drilling (std)	Projection to bit	POWERS 28C-23HZ AWB



# Actual Wellpath Report

POWERS 28C-23HZ AWP

Page 5 of 5



## REFERENCE WELLPATH IDENTIFICATION

Operator	ANADARKO E&P COMPANY LP	Slot	SLOT#05 POWERS 28C-23HZ (225'FSL & 1621'FEL, SEC.23)
Area	COLORADO	Well	POWERS 28C-23HZ
Field	WELD COUNTY (KERR MCGEE)	Wellbore	POWERS 28C-23HZ AWB
Facility	SEC.23-T2N-R65W		

## WELLPATH COMMENTS

MD [ft]	Inclination [°]	Azimuth [°]	TVD [ft]	Comment
885.00	2.300	54.420	884.83	Tie-Into GYRO Surveys
969.00	3.230	69.870	968.74	Begin BHI MWD Surveys
7832.00	91.762	359.106	7178.01	7" Casing Point
11670.00	87.750	358.070	7171.75	Last BHI MWD Survey
11738.00	87.750	358.070	7174.42	Projection to Bit