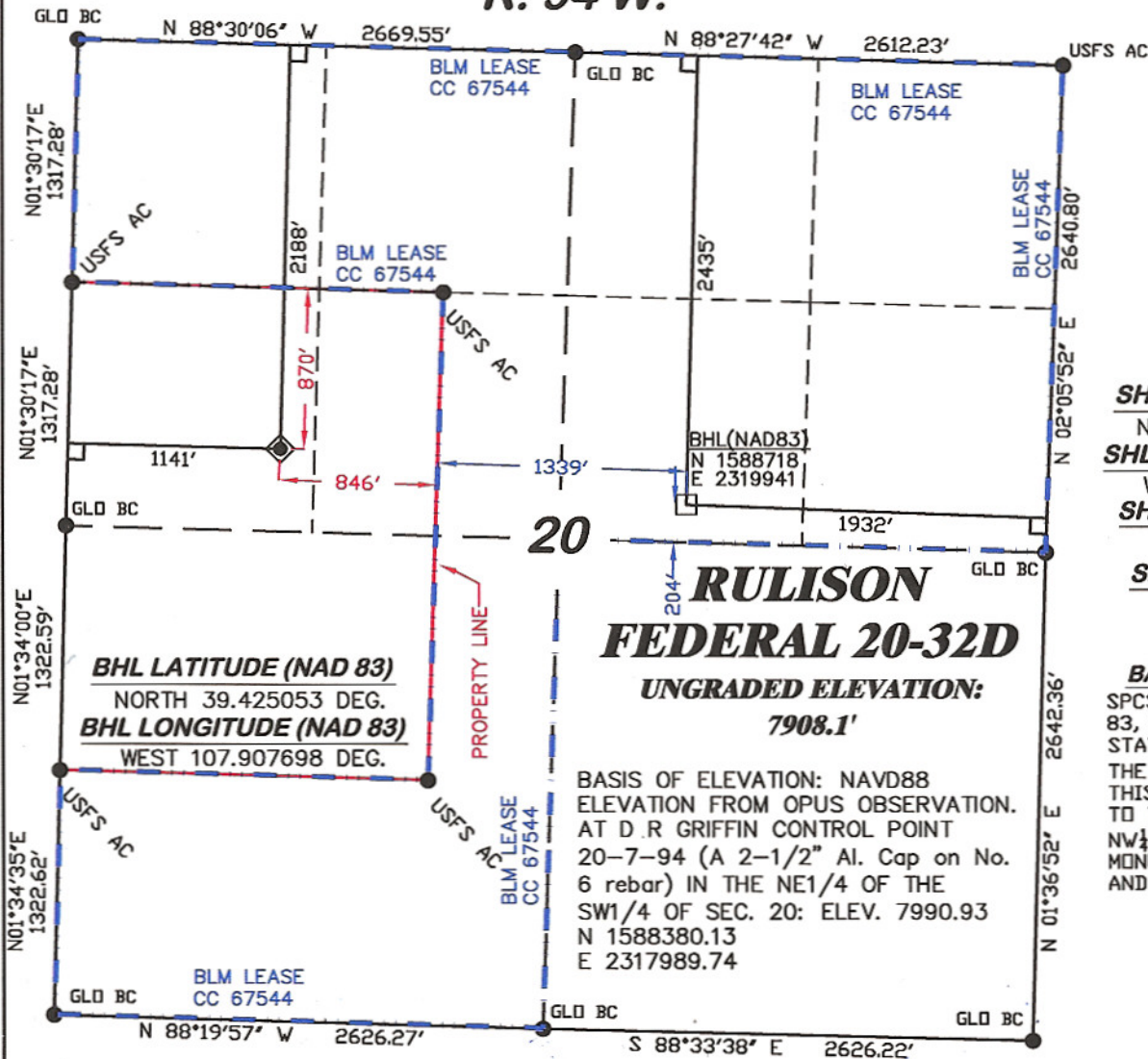


R. 94 W.



SCALE: 1" = 1000'
T. 7 S.

SHL LATITUDE (NAD 83)
NORTH 39.425729 DEG.
SHL LONGITUDE (NAD 83)
WEST 107.915427 DEG.
SHL NORTHING (NAD83)
1589021.85
SHL EASTING (NAD83)
2317765.14

BASIS OF BEARING
SPCS CO CENTRAL NAD 83, BASED ON NGS TRIG. STATION 'FABER'
THE BASIS OF BEARINGS FOR THIS SURVEY IS REFERENCED TO THE NORTH LINE OF THE NW 1/4 OF SECTION 20, BEING MONUMENTED WITH GLO BC'S AND BEARING N 88° 30' 06" W.

LEGEND

- ◆ WELL LOCATION
- FOUND MONUMENT
- L DENOTES 90° TIE
- BHL LOCATION



SURVEYOR'S STATEMENT

I, Ronald C. Rennke, an employee and agent on behalf of D.R. GRIFFIN & ASSOCIATES, INC. state the plat hereon is a correct representation of a survey made under my supervision on September 18, 2008 of the shown RULISON FEDERAL 20-32D staked on the ground as shown hereon.

NOTES

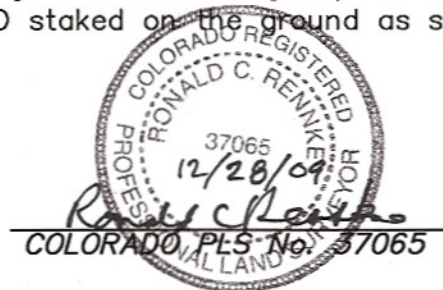
GPS OPERATOR RICHARD BULLEN
OBSERVED A PDOP OF 2.5.

ALL GPS OBSERVATIONS ARE IN COMPLIANCE WITH COGCC RULE NO. 215.

HIGH PLATEAU DESERT

2-TRACK ROAD WITHIN 400' RADIUS OF WELL SITE SEE EXHIBIT 1B.

SURFACE USE IS NATIVE WOODS, NON-CROP & RANGELAND.



20F PAD



R. GRIFFIN & ASSOCIATES, INC.
(307) 362-6028 1414 ELK ST., ROCK SPRINGS, WY 82901

DATE DRAWN: 9/22/08-RAB

SCALE: 1" = 1000'

REVISED: 12/15/09 - DEH

JOB No. 15455

CHANGE DATUM NAD83

EXHIBIT 1

**PLAT OF DRILLING LOCATION IN THE
SW 1/4 OF NW 1/4 OF SECTION 20
FOR NOBLE ENERGY, INC.**

**2188' F/NL & 1141' F/WL, SECTION 20,
T. 7 S., R. 94 W., 6th P.M.
GARFIELD COUNTY, COLORADO**