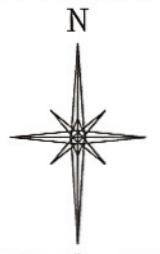
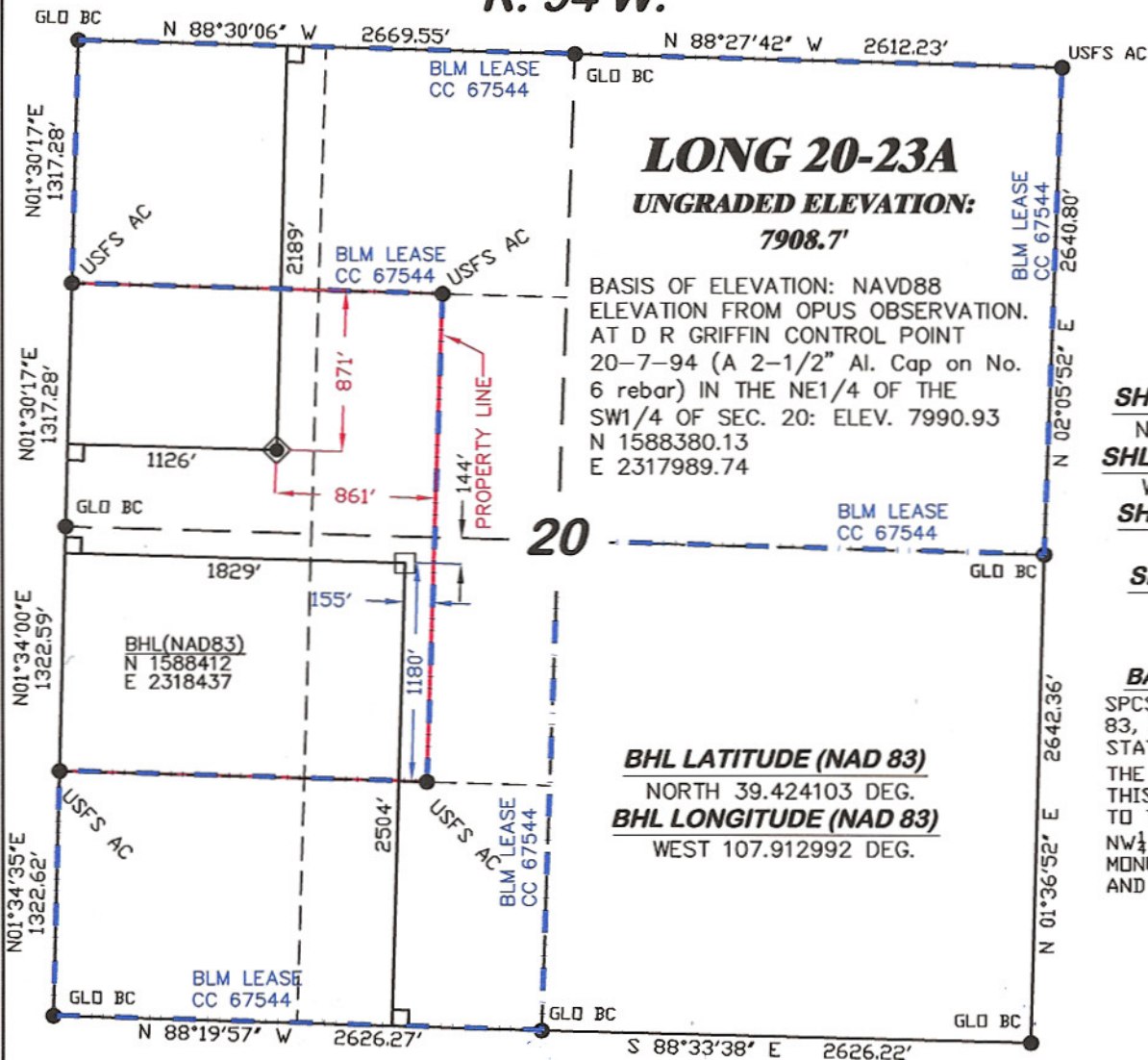


R. 94 W.



SCALE: 1" = 1000'
T. 7 S.

SHL LATITUDE (NAD 83)
 NORTH 39.425728 DEG.
SHL LONGITUDE (NAD 83)
 WEST 107.915480 DEG.
SHL NORTHING (NAD83)
 1589021.85
SHL EASTING (NAD83)
 2317750.14

BASIS OF BEARING
 SPCS CO CENTRAL NAD
 83, BASED ON NGS TRIG.
 STATION "FABER"
 THE BASIS OF BEARINGS FOR
 THIS SURVEY IS REFERENCED
 TO THE NORTH LINE OF THE
 NW1/4 OF SECTION 20, BEING
 MONUMENTED WITH GLD BC'S
 AND BEARING N 88° 30' 06" W.

LEGEND

- ◆ WELL LOCATION
- FOUND MONUMENT
- L DENOTES 90° TIE
- BHL LOCATION



SURVEYOR'S STATEMENT

I, Ronald C. Rennke, an employee and agent on behalf of D.R. GRIFFIN & ASSOCIATES, INC. state the plat hereon is a correct representation of a survey made under my supervision on September 18, 2008 of the shown LONG 20-23A staked on the ground as shown hereon.

NOTES

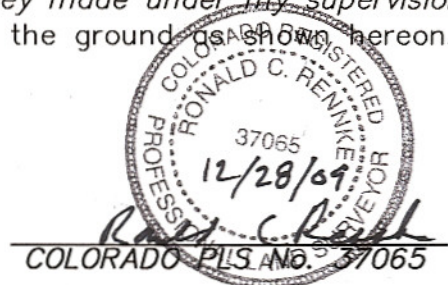
GPS OPERATOR RICHARD BULLEN
 OBSERVED A PDOP OF 2.5.

ALL GPS OBSERVATIONS ARE IN
 COMPLIANCE WITH COGCC RULE NO. 215.

HIGH PLATEAU DESERT
 2-TRACK ROAD WITHIN 400' RADIUS
 OF WELL SITE SEE EXHIBIT 1B.

SURFACE USE IS NATIVE WOODS, NON-CROP & RANGELAND.

20F PAD



DRG RIFFIN & ASSOCIATES, INC.
 (307) 362-5028 1414 ELK ST., ROCK SPRINGS, WY 82901

DATE DRAWN: 9/22/08-RAB

SCALE: 1" = 1000'

REVISED: 12/15/09 - DEH

JOB No. 15455

CHANGE DATUM NAD83

EXHIBIT 1

**PLAT OF DRILLING LOCATION IN THE
 SW 1/4 OF NW 1/4 OF SECTION 20
 FOR NOBLE ENERGY, INC.**

**2189' F/NL & 1126' F/WL, SECTION 20,
 T. 7 S., R. 94 W., 6th P.M.
 GARFIELD COUNTY, COLORADO**