

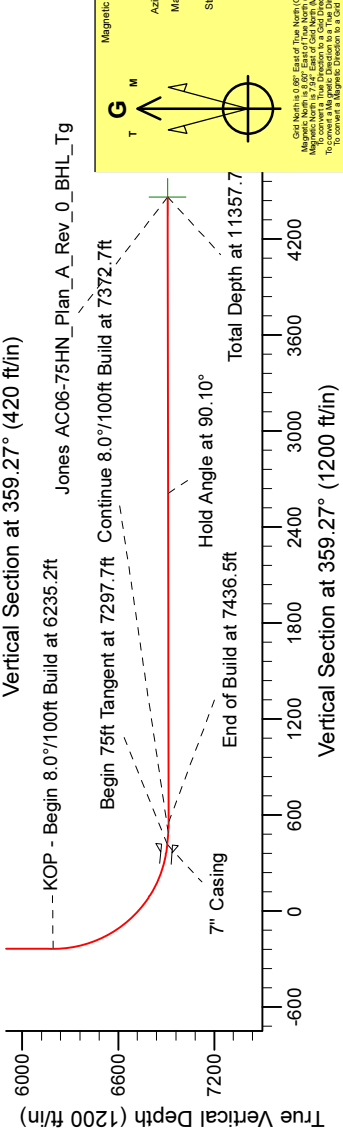
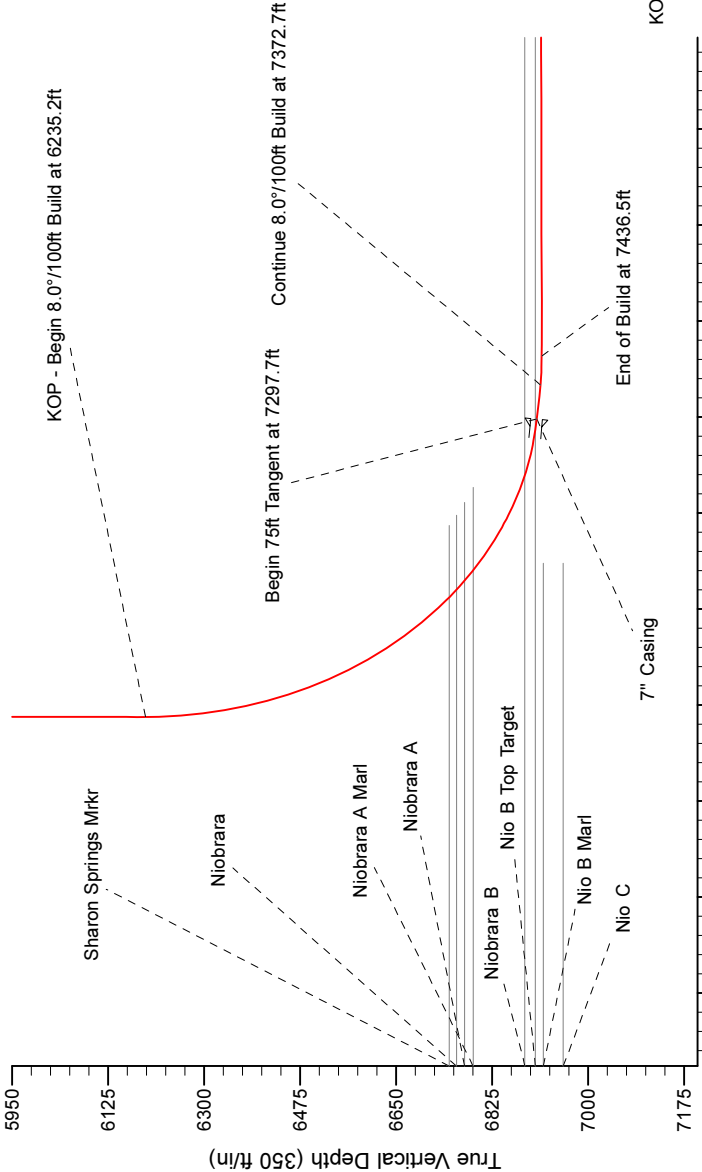
Project: Weld County Colorado (NAD 83)
Site: Sec. 6, T7N, R63W
Well: Jones AC06-75HN
Wellbore: Plan A Rev 0 (PERMITTING PLAN ONLY)
Design: Plan A Rev 0 Proposal

Noble Energy

HALLIBURTON
Sperry Drilling

SECTION DETAILS

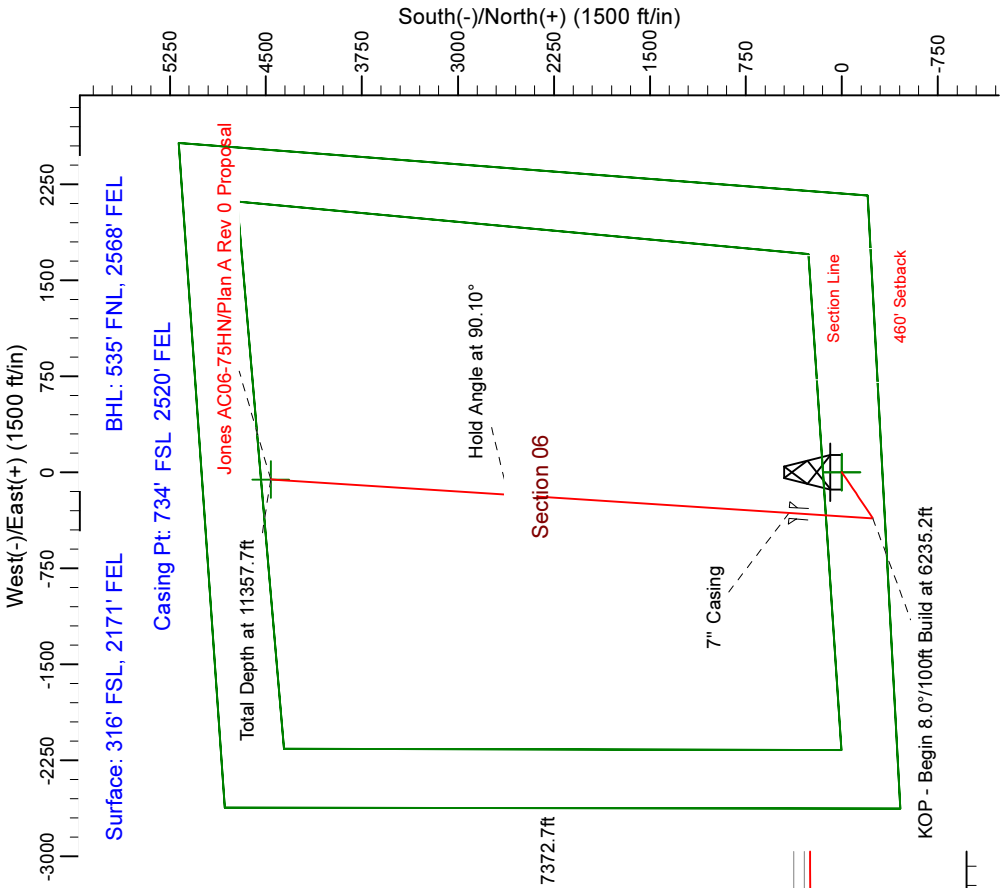
Sec	MD	Inc	Azi	TVD	+N/-S	+E/-W	Dleg	TFace	VSect	Target
1	0.0	0.00	0.00	0.0	0.0	0.0	0.00	0.00	0.0	0.0
2	2000.0	0.00	0.00	2000.0	0.0	0.0	0.00	0.00	0.0	0.0
3	2480.0	12.00	236.20	2476.5	-27.9	-41.6	2.50	236.20	-27.3	
4	4081.9	12.00	236.20	4043.4	-213.1	-318.4	0.00	0.00	-209.1	
5	4561.9	0.00	0.00	4519.9	-241.0	-360.0	2.50	180.00	-236.4	
6	6235.2	0.00	0.00	6193.2	-241.0	-360.0	0.00	0.00	-236.4	
7	7297.7	85.00	3.68	6906.7	411.4	-318.0	8.00	3.68	415.5	
8	7372.7	85.00	3.68	6913.2	486.0	-313.2	0.00	0.00	489.9	
9	7436.5	90.10	3.68	6915.9	549.5	-309.2	8.00	0.00	553.4	
10	11357.7	90.10	3.69	6909.2	4462.6	-57.0	0.00	103.73	4463.0	Jones AC06-75HN_Plan_A_Rev_0_BHL_Tg



Magnetic Model: IGRF200510

Assumptions to Grid North:
True North: 0.00°
Magnetic North: 7.94°
Strength: 53229.84 nT
Dip Angle: 67.24°
Date: 12/02/2012

Grid North is 0.00° East of True North (Grid Convergence)
Magnetic North is 7.94° East of True North (Magnetic Convergence)
To convert a Magnetic Direction to a True Direction: Add 7.94° East
To convert a True Direction to a Magnetic Direction: Add 7.94° East



WELL DETAILS: Jones AC06-75HN (NAD83 Geodetic System)			
North	East	Ground Level:	4891.0
445531.82	1000888.60	Latitude	40° 35' 46.752 N
		Longitude	104° 28' 41.556 W
Plan: Plan A Rev 0 Proposal (Kern AC06-75HN/Plan A Rev 0 (PERMITTING PLAN ONLY))			
Created By: Jose Patino		Date: 8:00, January 20 2012	