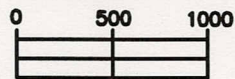
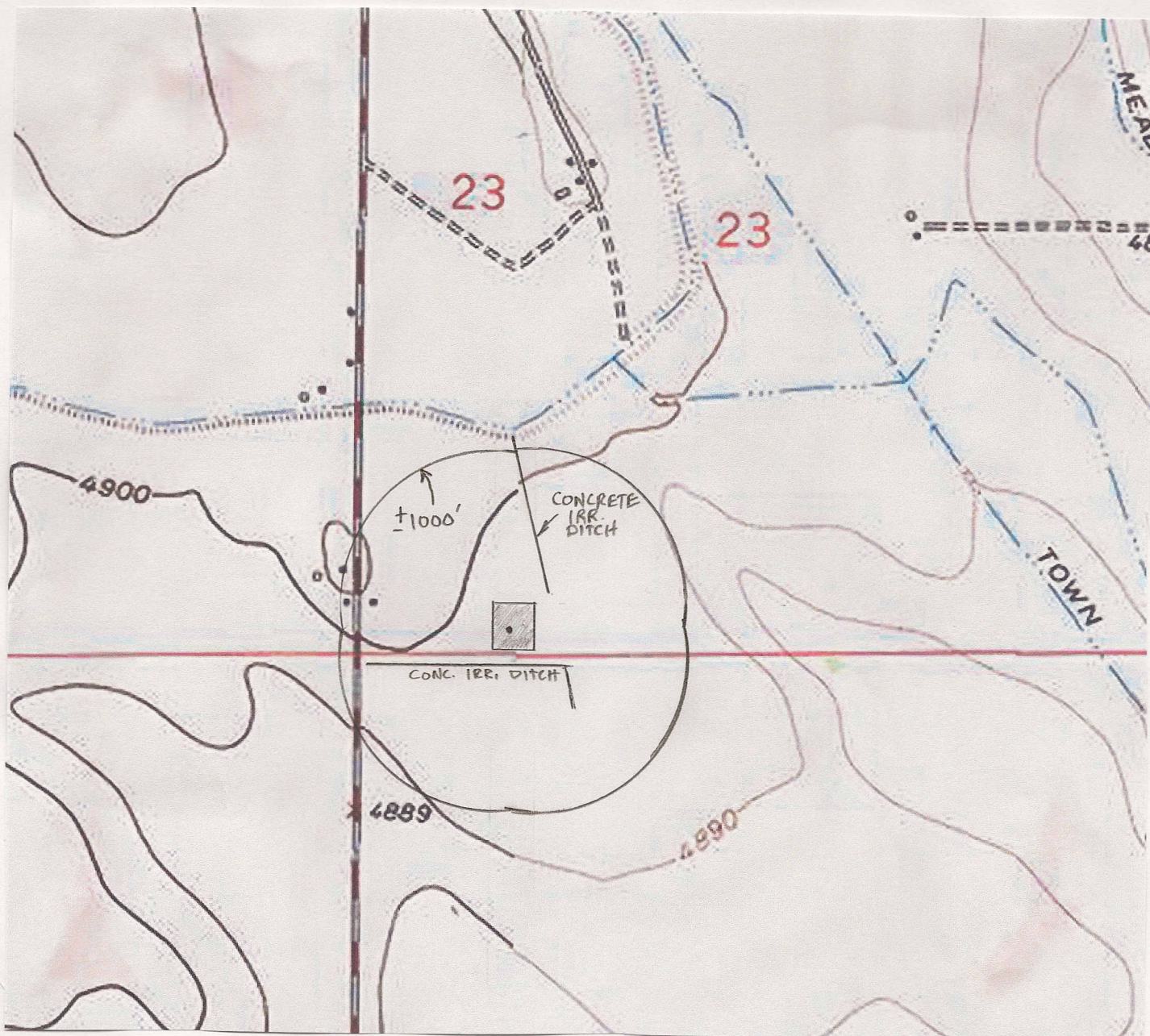


HYDROLOGY / TOPOGRAPHY MAP

SW1/4 SEC. 23 T7N R66W, 6TH P.M.

NW1/4 SEC. 26 T7N R66W, 6TH P.M.



APPROX. SCALE
1" = 1000'

THE S. END OF A CONCRETE IRRIGATION DITCH IS APPROX. 367' NE.
ANOTHER CONCRETE IRRIGATION DITCH IS 200' S.

NO OTHER VISIBLE WATER FEATURES WITHIN 1000' OF DISTURBANCE.

PREPARED BY:

HORSESHOE SURVEYING, LLC
PO BOX 150458
LAKEWOOD, CO 80215
(720)872-0196

WELL NAME:

MAGNUSON 23L-201

DRAWING DATE:

1-9-12

LOCATION:

WELD COUNTY, CO
SW1/4, SEC. 23, T7N, R66W, 6TH P.M.

FIELD DATE:

1-7-12

BY:

TGC