

Steil Surveying Services, LLC

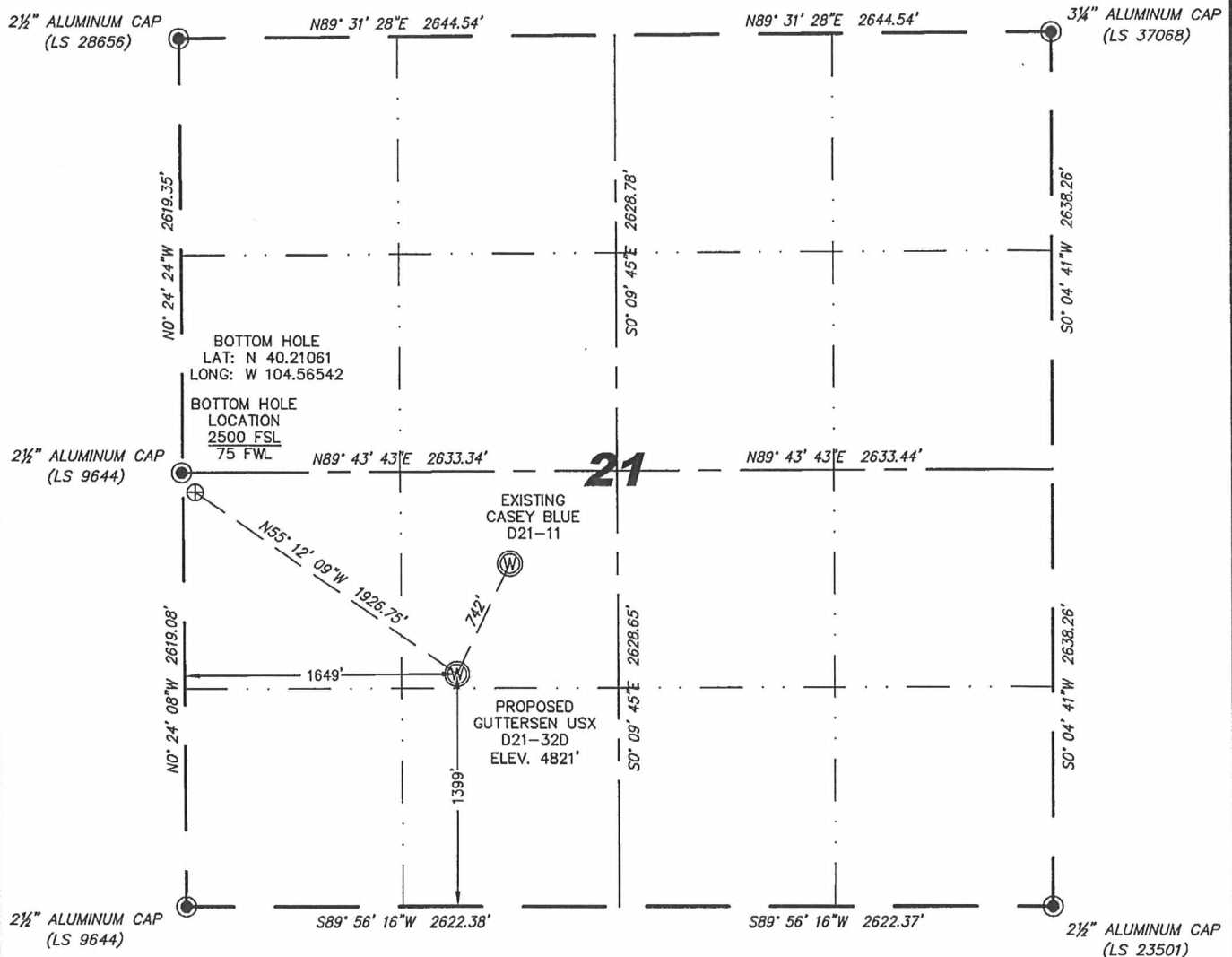
1102 West 19th Street P.O. BOX 2073

Cheyenne, Wyoming 82001

# WELL LOCATION CERTIFICATE

THIS MAP DOES NOT REPRESENT A BOUNDARY SURVEY

SECTION 21  
TOWNSHIP 3 NORTH  
RANGE 64 WEST



0 1000

Scale: 1" = 1000'

IN ACCORDANCE WITH A REQUEST FROM BRIAN DEROSE - NOBLE ENERGY INC, STEIL SURVEYING SERVICES, LLC HAS DETERMINED THE LOCATION OF THE GUTTERSEN USX D21-32D WELL TO BE 1399' FSL, 1649' FWL, AS MEASURED AT NINETY (90) DEGREES FROM THE SECTION LINES, SECTION 21, TOWNSHIP 3 NORTH, RANGE 64 WEST, 6TH PRINCIPLE MERIDIAN, WELD COUNTY, COLORADO.

I HEREBY CERTIFY THAT THIS WELL LOCATION CERTIFICATE WAS PREPARED BY ME, OR UNDER MY DIRECT SUPERVISION, THAT THE FIELD WORK WAS COMPLETED ON 09/20/2011, FOR AND ON BEHALF OF NOBLE ENERGY INC, THAT IT IS NOT A LAND SURVEY PLAT OR AN IMPROVEMENT SURVEY PLAT, AND THAT IT IS NOT TO BE RELIED UPON FOR ESTABLISHMENT OF FENCE, BUILDING, OR OTHER FUTURE IMPROVEMENT LINES.

## NOTES:

- 1) BASIS OF BEARINGS FOR THIS MAP ARE BASED UPON GPS OBSERVATIONS MADE ON 09/06/2011 BETWEEN MONUMENTS LOCATED AT THE SOUTHEAST SECTION CORNER AND THE NORTHEAST SECTION CORNER OF SAID SECTION AND WITH ALL BEARINGS SHOWN HEREON RELATIVE THERETO.
- 2) COORDINATES SHOWN ARE COLORADO STATE PLANE (NORTH ZONE) NAD 83
- 3) ELEVATIONS ARE BASED UPON NGS OPUS SOLUTION NAVD 88 DATUM.
- 4) THE NEAREST EXISTING WELL IS: CASEY BLUE D21-11, 742' NORTHEAST.
- 5) SEE LOCATION DRAWING FOR ALL IMPROVEMENTS WITHIN VISIBLE IMPROVEMENT LIMIT.
- 6) THE LOCATION FALLS IN PASTURE LAND.

LATITUDE & LONGITUDE (NAD 83 SURFACE HOLE):

LATITUDE: N 40.20755°

LONGITUDE: W 104.55980°

PDOP: 2.2

QUARTER-QUARTER: NE/4SW/4

NEAREST PROPERTY LINE: 1399' SOUTH

## LEGEND

● FOUND SURVEY MONUMENT PER  
MONUMENT RECORD - EXCEPTIONS NOTED.

(C) CALCULATED DIMENSION



Completed 09/23/2011

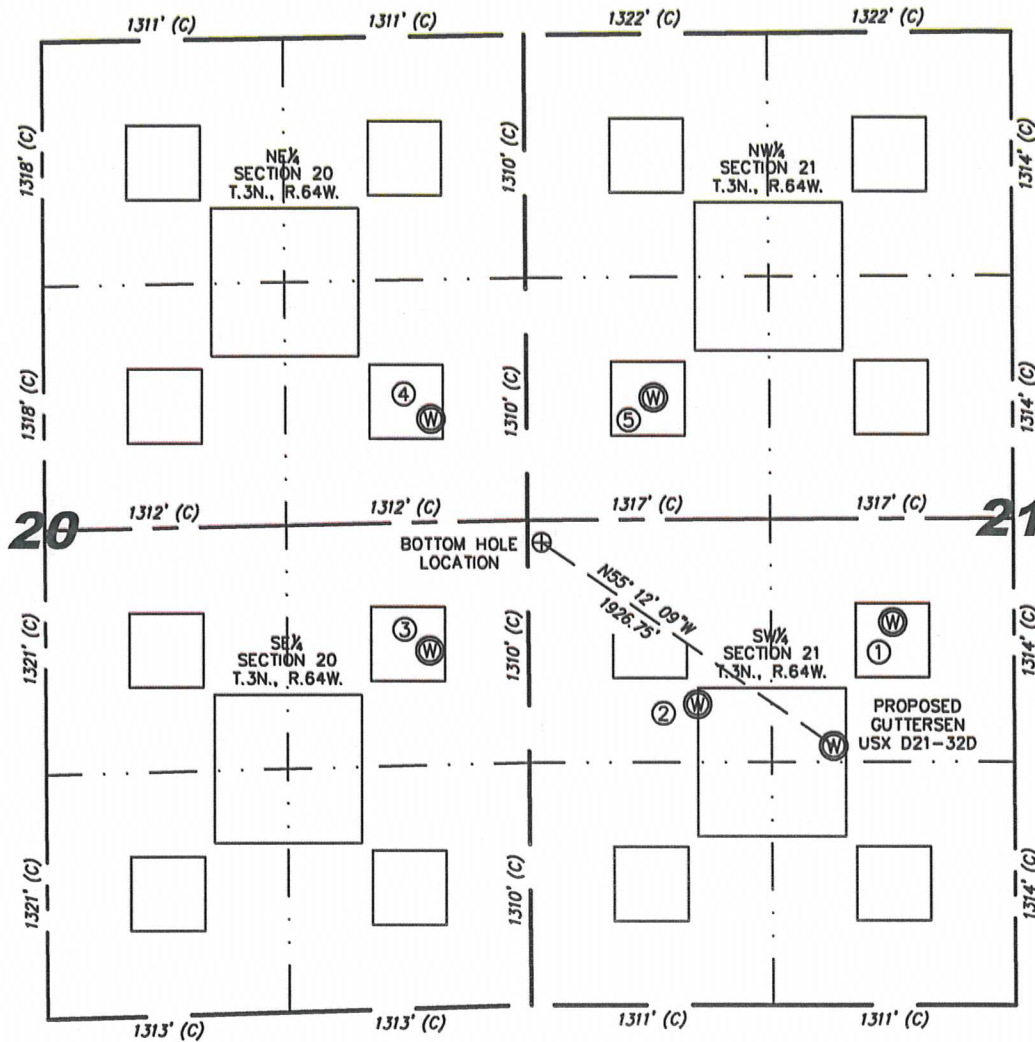
David C. Holmes  
Professional Land Surveyor Registration No. 32828  
State of Colorado

JOB #: 11086

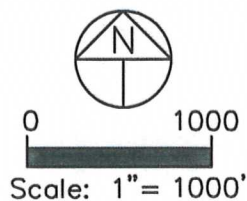
NOTICE: According to Colorado law you MUST commence any legal action based upon any defect in this W.L.C. within three years after you first discover such defect. In no event may any action based upon any defect in this W.L.C. be commenced more than ten years from this sold date of the certification shown hereon.

# SITE SKETCH - GUTTERSEN USX D21-32D

SECTIONS 20 & 21  
TOWNSHIP 3 NORTH  
RANGE 64 WEST



①	②	③	④	⑤
CASEY BLUE D21-11 NE/SW SEC. 21 2067' FSL 1976' FWL EL 4813' N 40.20937 W 104.55862 PDOP 1.8	CASEY BLUE D21-3J NW/SW SEC. 21 1624' FSL 915' FWL EL 4803' N 40.20819 W 104.56243 PDOP 1.8	DUNCAN D20-9 NE/SE SEC. 20 1930' FSL 537' FEL EL 4771' N 40.20902 W 104.56762 PDOP 1.9	DUNCAN D20-8 SE/NE SEC. 20 2063' FNL 521' FEL EL 4790' N 40.21246 W 104.56755 PDOP 2.1	HSR-GUTTERSEN 5-21 SW/NW SEC. 21 1961' FNL 689' FWL EL 4800' N 40.21274 W 104.56321 PDOP 2.2



## NOTES:

- THIS SKETCH DOES NOT REPRESENT A BOUNDARY SURVEY.
- THE DATUM FOR THE LATITUDES AND LONGITUDES ON THIS SKETCH IS NAD83.