

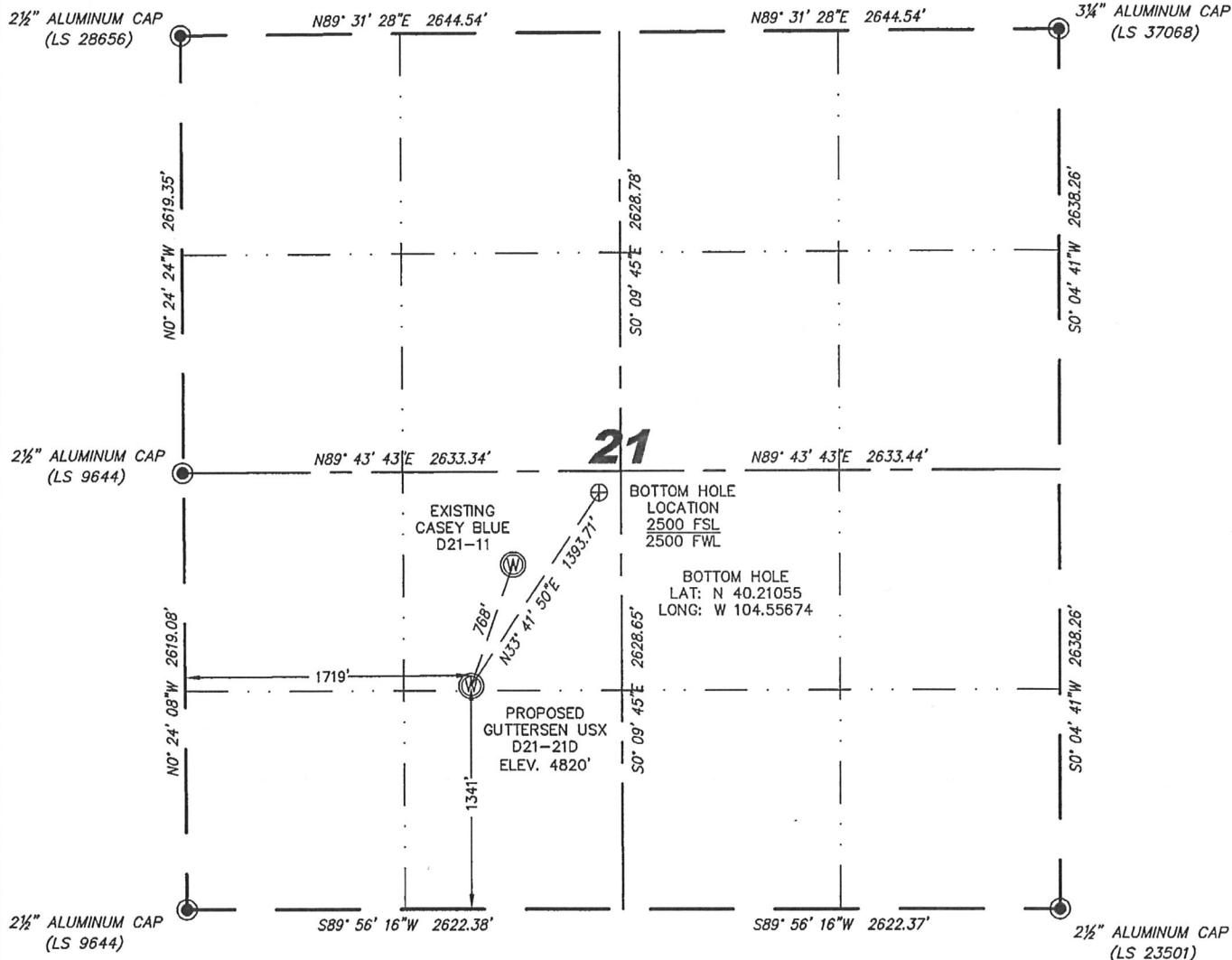
Steil Surveying Services, LLC

1102 West 19th Street P.O. BOX 2073

Cheyenne, Wyoming 82001

WELL LOCATION CERTIFICATE
THIS MAP DOES NOT REPRESENT A BOUNDARY SURVEY

SECTION 21
TOWNSHIP 3 NORTH
RANGE 64 WEST



0 1000
Scale: 1" = 1000'

IN ACCORDANCE WITH A REQUEST FROM BRIAN DEROSE - NOBLE ENERGY INC., STEIL SURVEYING SERVICES, LLC HAS DETERMINED THE LOCATION OF THE GUTTERSEN USX D21-21D WELL TO BE 1341' FSL, 1719' FWL, AS MEASURED AT NINETY (90) DEGREES FROM THE SECTION LINES, SECTION 21, TOWNSHIP 3 NORTH, RANGE 64 WEST, 6TH PRINCIPLE MERIDIAN, WELD COUNTY, COLORADO.

I HEREBY CERTIFY THAT THIS WELL LOCATION CERTIFICATE WAS PREPARED BY ME, OR UNDER MY DIRECT SUPERVISION, THAT THE FIELD WORK WAS COMPLETED ON 09/20/2011, FOR AND ON BEHALF OF NOBLE ENERGY INC, THAT IT IS NOT A LAND SURVEY PLAT OR AN IMPROVEMENT SURVEY PLAT, AND THAT IT IS NOT TO BE RELIED UPON FOR ESTABLISHMENT OF FENCE, BUILDING, OR OTHER FUTURE IMPROVEMENT LINES.

NOTES:

- 1) BASIS OF BEARINGS FOR THIS MAP ARE BASED UPON GPS OBSERVATIONS MADE ON 09/06/2011 BETWEEN MONUMENTS LOCATED AT THE SOUTHEAST SECTION CORNER AND THE NORTHEAST SECTION CORNER OF SAID SECTION AND WITH ALL BEARINGS SHOWN HEREON RELATIVE THERETO.
- 2) COORDINATES SHOWN ARE COLORADO STATE PLANE (NORTH ZONE) NAD 83
- 3) ELEVATIONS ARE BASED UPON NGS OPUS SOLUTION NAVD 88 DATUM.
- 4) THE NEAREST EXISTING WELL IS: CASEY BLUE D21-11, 768' NORTHEAST.
- 5) SEE LOCATION DRAWING FOR ALL IMPROVEMENTS WITHIN VISIBLE IMPROVEMENT LIMIT.
- 6) THE LOCATION FALLS IN PASTURE LAND.

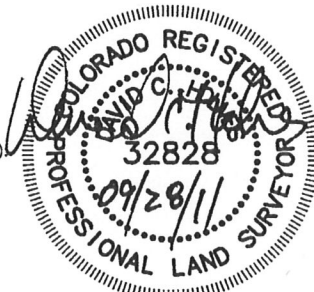
LATITUDE & LONGITUDE (NAD 83 SURFACE HOLE)

LATITUDE: N 40.20739°
LONGITUDE: W 104.55955°
PDOP: 2.3
QUARTER-QUARTER: NE/4SW/4
NEAREST PROPERTY LINE: 1341' SOUTH

LEGEND

- FOUND SURVEY MONUMENT PER MONUMENT RECORD - EXCEPTIONS NOTED.
- (C) CALCULATED DIMENSION

NOTICE: According to Colorado law you MUST commence any legal action based upon any defect in this W.L.C. within three years after you first discover such defect. In no event may any action based upon any defect in this W.L.C. be commenced more than ten years from this sold date of the certification shown hereon.



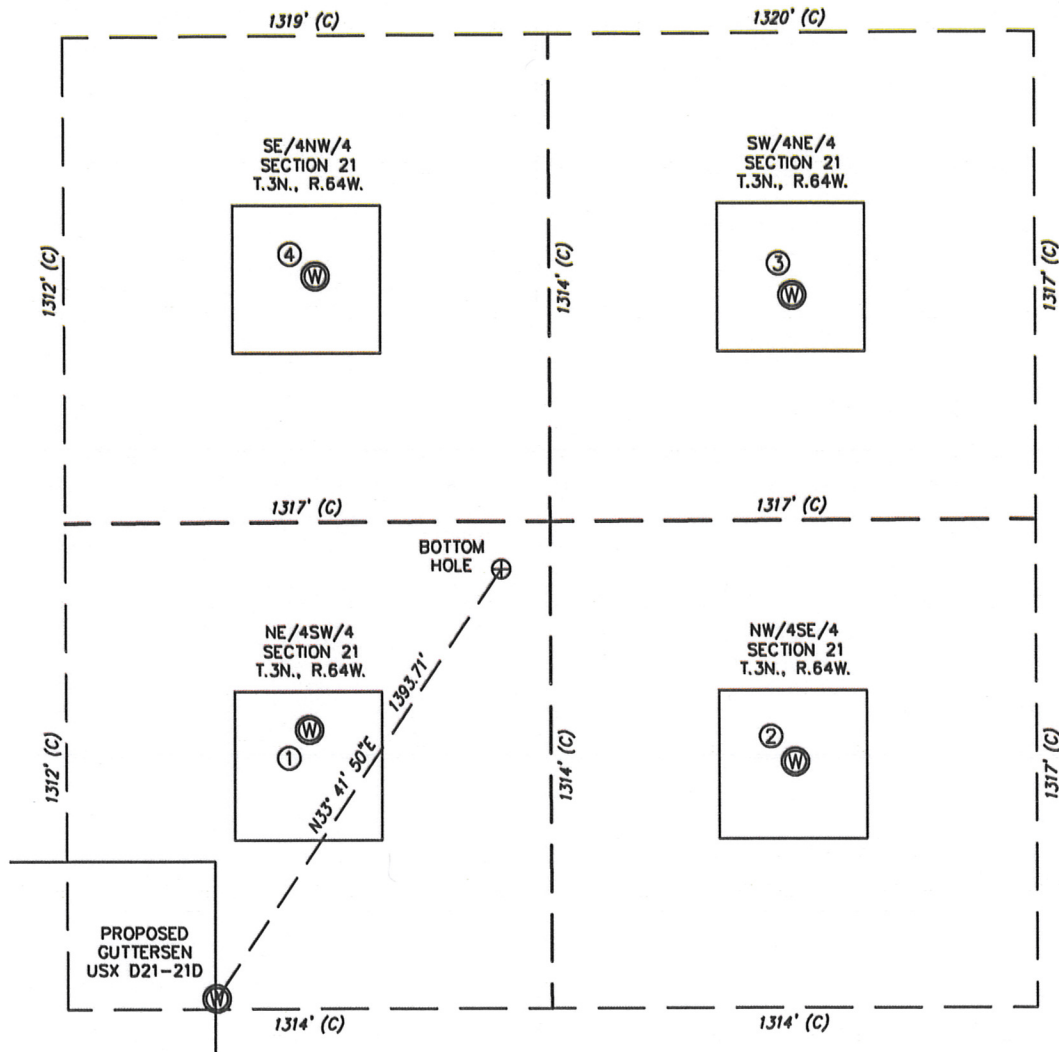
David C. Holmes
Professional Land Surveyor Registration No. 32828
State of Colorado

Completed 09/23/2011

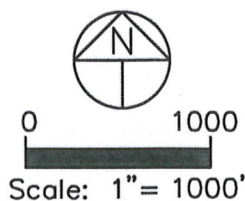
JOB #: 11086

SITE SKETCH - GUTTERSEN USX D21-21D

SECTION 21
TOWNSHIP 3 NORTH
RANGE 64 WEST



①	②	③	④
CASEY BLUE D21-11 NE/SW SEC. 21 2067' FSL 1976' FWL EL 4813' N 40.20937 W 104.55862 PDOP 1.8	GUTTERSEN 33-21 NW/SE SEC. 21 1979' FSL 1967' FEL EL 4816' N 40.20910 W 104.55390 PDOP 2.4	GUTTERSEN 32-21 SW/NE SEC. 21 2023' FNL 1975' FEL EL 4805' N 40.21256 W 104.55388 PDOP 2.1	HSR-GUTTERSEN 6-21 SE/NW SEC. 21 1962' FNL 2001' FWL EL 4805' N 40.21273 W 104.55851 PDOP 2.0



NOTES:

- THIS SKETCH DOES NOT REPRESENT A BOUNDARY SURVEY.
- THE DATUM FOR THE LATITUDES AND LONGITUDES ON THIS SKETCH IS NAD83.