

T7S, R97W, 6th P.M.

OXY USA WTP LP

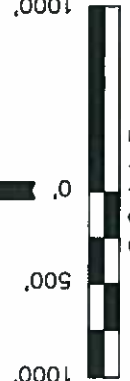
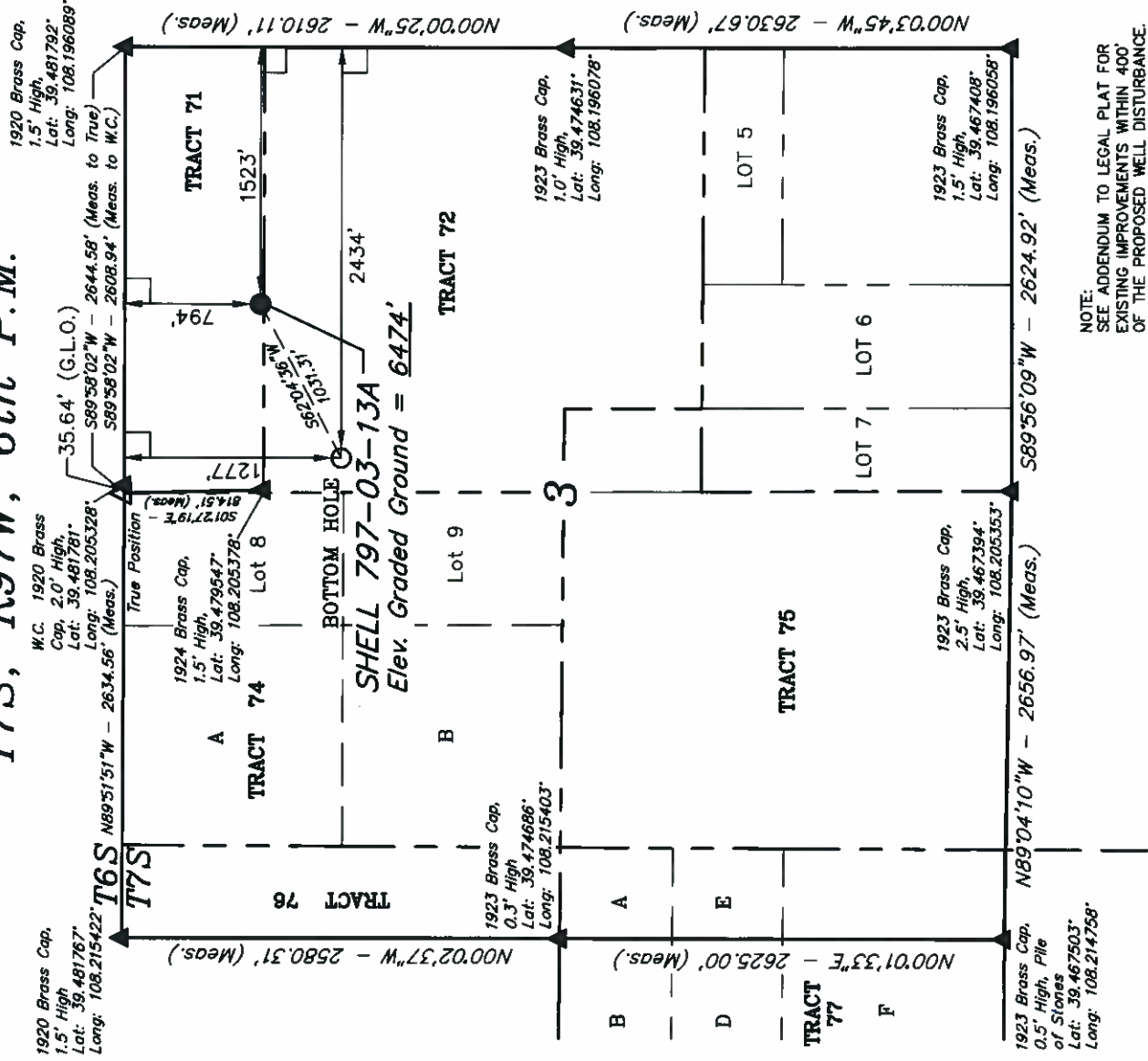
Well location, SHELL 797-03-13A, located as shown in TRACT 71 of Section 3, T7S, R97W, 6th P.M., Garfield County, Colorado.

BASIS OF ELEVATION

SPOT ELEVATION AT THE NORTHWEST CORNER OF SECTION 30, T5S, R95W, 6th P.M. TAKEN FROM THE FORKED GULCH QUADRANGLE, COLORADO, GARFIELD COUNTY, 7.5 MINUTE SERIES (TOPOGRAPHICAL MAP) PUBLISHED BY THE UNITED STATES DEPARTMENT OF THE INTERIOR, GEOLOGICAL SURVEY. SAID ELEVATION IS MARKED AS BEING 5966 FEET.

BASIS OF BEARINGS

BASIS OF BEARINGS IS A G.P.S. OBSERVATION.



CERTIFICATE

THIS IS TO CERTIFY THAT THE ABOVE PLAT WAS PREPARED FROM FIELD NOTES OF ACTUAL SURVEYS MADE BY ME OR UNDER MY SUPERVISION AND THAT THE SAME ARE TRUE AND CORRECT TO THE BEST OF MY KNOWLEDGE AND BELIEF.

ERT L
REGISTERED LAND SURVEYOR
REGISTRATION NO. 167400
STATE OF COLORADO
10-10-2011

Revised: 02-02-12 D.R.B.

UNTAH ENGINEERING & LAND SURVEYING

85 SOUTH 200 EAST - VERNAL, UTAH 84078
(436) 789-1017

SCALE 1" = 1000'	DATE SURVEYED: 08-17-11	DATE DRAWN: 10-07-11
PARTY B.B. T.M. D.R.B.	REFERENCES G.L.O. PLAT	
WEATHER COOL	FILE	
		OXY USA WTP LP

NOTE:
SEE ADDENDUM TO LEGAL PLAT FOR
EXISTING IMPROVEMENTS WITHIN 400'
OF THE PROPOSED WELL DISTURBANCE.

	PDOP = 1.6
NAD 83 (TARGET BOTTOM HOLE)	NAD 83 (SURFACE LOCATION)
LATITUDE = 39°28'41.72" (39.478256)	LATITUDE = 39°28'46.50" (39.479583)
LONGITUDE = 108°12'19.23" (108.205342)	LONGITUDE = 108°12'07.61" (108.202114)
NAD 27 (TARGET BOTTOM HOLE)	NAD 27 (SURFACE LOCATION)
LATITUDE = 39°28'41.80" (39.478276)	LATITUDE = 39°28'46.58" (39.479606)
LONGITUDE = 108°12'16.93" (108.204703)	LONGITUDE = 108°12'05.32" (108.201478)

LEGEND:

- = 90° SYMBOL
- = PROPOSED WELL HEAD.
- ▲ = SECTION CORNERS LOCATED