

SURFACE LOCATION
 NAD 83
 LAT = 40.46565°N
 LON = 104.85208°W
 P.D.O.P. = 2.5
 GPS OPERATOR= C. VANMATRE

WELL LOCATION PLAT O-1 23-44-22

BOTTOM HOLE LOCATION
 NAD 83
 LAT = 40.46519°N
 LON = 104.85617°W
 P.D.O.P. = 2.3
 GPS OPERATOR= C. VANMATRE

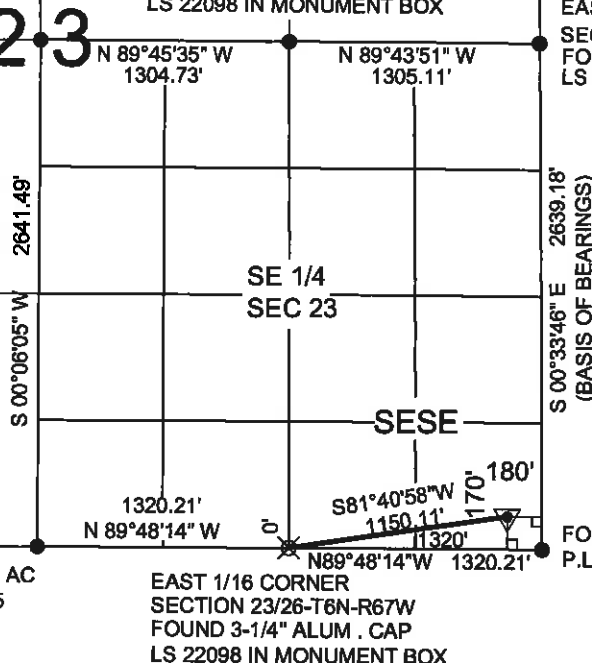
FOUND 3.25" AC
 P.L.S. #22098

CENTER-EAST 1/16 CORNER
 SECTION 23-T6N-R67W
 FOUND 3-1/4" ALUM. CAP
 LS 22098 IN MONUMENT BOX

EAST QUARTER CORNER
 SECTION 23-T6N-R67W
 FOUND 3-1/4" ALUM. CAP
 LS 20685

SURFACE LOCATION
 170' FSL & 180' FEL
 NAD 27
 LAT = 40.46567°N
 LON = 104.85155°W
 P.D.O.P. = 2.5
 GPS OPERATOR= C. VANMATRE

BOTTOM HOLE LOCATION
 0' FSL & 1320' FEL
 NAD 27
 LAT = 40.46521°N
 LON = 104.85564°W
 P.D.O.P. = 2.3
 GPS OPERATOR= C. VANMATRE

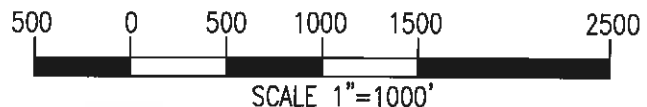


T 6 N
 R 67 W
 WELD
 COUNTY

WELL: O-1 23-44-22 TO BE LOCATED 170' FSL AND 180' FEL IN SECTION 23, TOWNSHIP 6 NORTH, RANGE 67 WEST OF THE 6TH P.M.
 LOCATION FALLS IN: CORN FIELD GROUND ELEVATION = 4772' IMPROVEMENTS: PROPOSED WELLS 20', 40', AND 60' NORTH OF LOCATION

LEGEND:

- SECTION CORNER (AS NOTED)
- ▼ PROPOSED WELL LOCATION
- ⊗ PROPOSED BOTTOM HOLE LOCATION



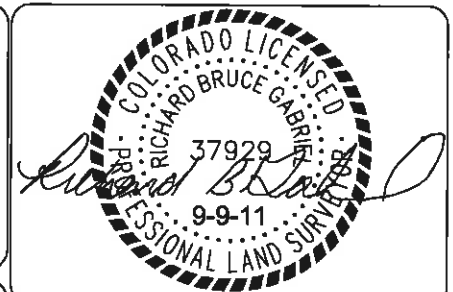
NOTES:

1. THIS SURVEY WAS DONE BY GPS METHODS AND CONFORMS TO THE MINIMUM STANDARDS AS SET BY THE C.O.G.C.C. RULE NO. 215.
2. ELEVATIONS SHOWN AT THE WELL HEAD, AS WELL AS HORIZONTAL CONTROL, ARE BASED ON GPS-RTK VALUES DERIVED FROM DOING 2-HOUR STATIC GPS SESSIONS AND REDUCTIONS USING O.P.U.S. SOLUTIONS.
 VERTICAL = NAVD88 HORIZONTAL = NAD83/92
3. THE BEARINGS AS SHOWN HEREON ARE BASED ON GPS OBSERVATIONS BETWEEN THE MONUMENTS SHOWN HEREON AS FOUND IN THE FIELD DATE BELOW.
4. DISTANCES SHOWN ARE AT GROUND LEVEL, AS MEASURED IN THE FIELD, WITH TIES TO WELLS MEASURED AT A PERPENDICULAR TO SECTION LINES.

I, RICHARD B. GABRIEL, A LICENSED PROFESSIONAL LAND SURVEYOR IN THE STATE OF COLORADO DO HEREBY CERTIFY TO:
GREAT WESTERN OIL AND GAS COMPANY THAT THE SURVEY AND WELL LOCATION CERTIFICATE SHOWN HEREON WAS DONE BY ME OR UNDER MY DIRECT SUPERVISION AND THAT THE DRAWING SHOWN HEREON ACCURATELY DEPICTS THE PROPOSED LOCATION OF THE WELL **O-1 23-44-22**.
 THIS CERTIFICATE DOES NOT REPRESENT A LAND SURVEY PLAT OR IMPROVEMENT SURVEY PLAT AS DEFINED BY C.R.S. 38-51-102 AND CANNOT BE RELIED UPON TO DETERMINE OWNERSHIP.

RICHARD B. GABRIEL P.L.S. #37929
 COLORADO LICENSED PROFESSIONAL LAND SURVEYOR
 FOR AND ON BEHALF OF POWER SURVEYING CO., INC.

NOTICE: ACCORDING TO COLORADO LAW YOU MUST COMMENCE ANY LEGAL ACTION BASED UPON ANY DEFECT IN THIS SURVEY WITHIN THREE YEARS AFTER YOU FIRST DISCOVER SUCH DEFECT. IN NO EVENT MAY ANY ACTION BASED ON ANY DEFECT IN THIS SURVEY BE COMMENCED MORE THAN TEN YEARS FROM THIS SAID DATE OF THIS CERTIFICATION SHOWN HEREON.



POWER
 Surveying Company, Inc.
 Established 1918
 120 W. 84TH AVENUE PH. 303-702-1617
 THORNTON, COLORADO 80280 FAX. 303-702-1488
 WWW.POWERSURVEYING.COM

DATE OF FIELD WORK: 9-8-11
 DATE OF COMPLETION: 9-9-11
 PROJECT NUMBER: 501-11-145 REV1