
WEXPRO COMPANY E-BILL

**Carl Allen 40
POWDER WASH
Moffat County, Colorado**

Cement Surface Casing

08-Jan-2012

Post Job Report

Cementing Job Summary

The Road to Excellence Starts with Safety

Sold To #: 343491	Ship To #: 2900509	Quote #:	Sales Order #: 9189515
Customer: WEXPRO COMPANY E-BILL	Customer Rep: Airdrill, Questar		
Well Name: Carl Allen	Well #: 40	API/UWI #: 05-081-07645	
Field: POWDER WASH	City (SAP): CRAIG	County/Parish: Moffat	State: Colorado
Legal Description: Section 28 Township 12N Range 97W			
Contractor: Wexpro	Rig/Platform Name/Num: SST 88		
Job Purpose: Cement Surface Casing			
Well Type: Development Well	Job Type: Cement Surface Casing		
Sales Person: VOLNER, THOMAS	Srvs Supervisor: DENT, JEROD	MBU ID Emp #: 457336	

Job Personnel

HES Emp Name	Exp Hrs	Emp #	HES Emp Name	Exp Hrs	Emp #	HES Emp Name	Exp Hrs	Emp #
BERRY, COLT Walker	7	509357	DENT, JEROD Judd	7	457336	MCNUTT, GILBERT D	7	455161
MILSTEN, DAVID G	7	429844						

Equipment

HES Unit #	Distance-1 way	HES Unit #	Distance-1 way	HES Unit #	Distance-1 way	HES Unit #	Distance-1 way
10744715C	65 mile	10804559	65 mile	11071575	65 mile	11139002	65 mile
11287616	65 mile	11307426	65 mile	11377690	65 mile		

Job Hours

Date	On Location Hours	Operating Hours	Date	On Location Hours	Operating Hours	Date	On Location Hours	Operating Hours
1-7-12	.25	0	1-8-2012	6.75	2			

TOTAL 7 *Total is the sum of each column separately*

Job

Formation Name	Formation Depth (MD)	Top	Bottom	Job	Job Times
Form Type				Called Out	07 - Jan - 2012 07:00 MST
Job depth MD	1536. ft			On Location	07 - Jan - 2012 11:45 MST
Water Depth				Job Started	08 - Jan - 2012 05:07 MST
Perforation Depth (MD)	From	To		Job Completed	08 - Jan - 2012 06:30 MST
				Departed Loc	08 - Jan - 2012 08:00 MST

Well Data

Description	Max pressure psig	Size in	ID in	Weight lbm/ft	Thread	Grade	Top MD ft	Bottom MD ft	Top TVD ft	Bottom TVD ft
Conductor Pipe		16.	15.376	55.			.	80.		
Surface Open Hole			12.25				80.	1536.		
Surface Casing		9.625	8.921	36.		J-55	.	1536.		

Sales/Rental/3rd Party (HES)

Description	Qty	Qty uom	Depth	Supplier
MICRO MATRIX RETARDER	2	GAL		
PLUG,CMTG,TOP,9 5/8,HWE,8.16 MIN/9.06 MA	1	EA		

Tools and Accessories

Type	Size	Qty	Make	Depth	Type	Size	Qty	Make	Depth	Type	Size	Qty	Make
Guide Shoe					Packer					Top Plug	9.625	1	HES
Float Shoe	9.625	1	HES	1536	Bridge Plug					Bottom Plug			
Float Collar	9.625	1	HES	1490.78	Retainer					SSR plug set			
Insert Float										Plug Container			
Stage Tool										Centralizers	9.625	6	HES

Miscellaneous Materials

Gelling Agt	Conc	Surfactant	Conc	Acid Type	Qty	Conc	%
Treatment Fld	Conc	Inhibitor	Conc	Sand Type	Size	Qty	

Fluid Data									
Stage/Plug #: 1									
Fluid #	Stage Type	Fluid Name	Qty	Qty uom	Mixing Density lbm/gal	Yield ft ³ /sk	Mix Fluid Gal/sk	Rate bbl/min	Total Mix Fluid Gal/sk
1	Fresh Water	FRESH WATER SPACER	20	bbl	8.33	.0	.0	3.	
2	VeriCem RS 1	VARICEM (TM) CEMENT (452009)	165.0	sacks	11.50	2.98	18.22	6.	18.22
	0.125 lbm	POLY-E-FLAKE (101216940)							
	0.25 lbm	KWIK SEAL, SK (100064010)							
	18.22 Gal	FRESH WATER							
3	W1- Premium	CMT - PREMIUM - CLASS G, 94 LB SK (100003685)	250.0	sacks	15.20	1.28	5.81	6.	5.81
	94 lbm	CMT - PREMIUM - CLASS G REG OR TYPE V, BULK (100003685)							
	2 %	CALCIUM CHLORIDE, PELLET, 50 LB (101509387)							
	1 %	HALLIBURTON GEL, 50 LB SK (100064040)							
	5.81 Gal	FRESH WATER							
4	Fresh Water	DISPLACEMENT	110	bbl	8.33	.0	.0	6.	
Calculated Values		Pressures		Volumes					
Displacement	115	Shut In: Instant		Lost Returns	0	Cement Slurry	144.6	Pad	
Top Of Cement	SURFACE	5 Min		Cement Returns	55	Actual Displacement	115	Treatment	
Frac Gradient		15 Min		Spacers	20	Load and Breakdown		Total Job	279.6
Rates									
Circulating	6	Mixing	6	Displacement	6	Avg. Job	6		
Cement Left In Pipe	Amount	46 ft	Reason	Shoe Joint					
Frac Ring # 1 @	ID	Frac ring # 2 @	ID	Frac Ring # 3 @	ID	Frac Ring # 4 @	ID		
The Information Stated Herein Is Correct				Customer Representative Signature					

Planned Pump Schedule

Wexpro Carl Allen 40 Surface

1. Pressure Test HES Lines

2. Pump Spacer

	Name	Density (lb/gal)	Volume (bbls)	Rate (bpm)	Surfactants
2a.	Fresh Water	8.33	20	2	

3. Pump Cement

	Name	Density (lb/gal)	Slurry Volume (bbls)	Rate (bpm)	Mix Water Required (bbls)
3a.	VariCem RS1-Lead	11.5	87.6	6	71.6
3b.	W1 - Premium-Tail	15.2	56.9	6	34.6
3c.	Holcim Type II-V-Top Out	15.3	33.3		20.1

4. Shutdown, Drop Top Plug

5. Displacement

	Name	Density (lb/gal)	Volume (bbls)	Rate (bpm)
5a.	WBM	8.4	100.0	6
5b.	WBM	8.4	12.5	2



Cementing Job Log

The Road to Excellence Starts with Safety

Sold To #: 343491	Ship To #: 2900509	Quote #:	Sales Order #: 9189515
Customer: WEXPRO COMPANY E-BILL		Customer Rep: Airdrill, Questar	
Well Name: Carl Allen	Well #: 40	API/UWI #: 05-081-07645	
Field: POWDER WASH	City (SAP): CRAIG	County/Parish: Moffat	State: Colorado
Legal Description: Section 28 Township 12N Range 97W			
Lat: N 0 deg. OR N 0 deg. 0 min. 0 secs.		Long: E 0 deg. OR E 0 deg. 0 min. 0 secs.	
Contractor: Wexpro		Rig/Platform Name/Num: SST 88	
Job Purpose: Cement Surface Casing			Ticket Amount:
Well Type: Development Well		Job Type: Cement Surface Casing	
Sales Person: VOLNER, THOMAS		Srv Supervisor: DENT, JEROD	MBU ID Emp #: 457336

Activity Description	Date/Time	Cht #	Rate bbl/min	Volume bbl		Pressure psig		Comments
				Stage	Total	Tubing	Casing	
Call Out	01/07/2012 19:00							CREW CALLED
Pre-Convoy Safety Meeting	01/07/2012 20:30							HES CREW TALKED ABOUT ROUTES, HAZARDS, AND POLICIES
Crew Leave Yard	01/07/2012 21:00							
Arrive At Location	01/07/2012 23:45							ARRIVED ON LOCATION 23:45 HRS
Assessment Of Location Safety Meeting	01/08/2012 00:30							CREW ASSESSED LOCATION AND TALKED ABOUT ANY HAZARDS, SPOTTED EQUIPMENT, REVIEWED POLICIES AND PROCEDURES
Pre-Rig Up Safety Meeting	01/08/2012 02:00							CREW TALKED ABOUT HAZARDS, HES STANDARDS OF RIGGING UP GROUND
Rig-Up Equipment	01/08/2012 02:15							
Casing on Bottom	01/08/2012 03:30							CASING ON BOTTOM AT 0330 HRS, RIG CIRCULATED AT 6 BBLS/MIN AT 55 PSI
Pre-Job Safety Meeting	01/08/2012 04:30							HES CREW, RIG CREW AND COMPANY MAN TALKED ABOUT HES STANDARDS, MUSTER AREAS, SWING PLANES, PINCH POINTS, EMERGENCY PROCEDURES, AND PUMPING SCHEDULE

Sold To # : 343491

Ship To # :2900509

Quote # :

Sales Order # : 9189515

SUMMIT Version: 7.2.27

Thursday, January 12, 2012 05:42:00

Cementing Job Log

Activity Description	Date/Time	Cht #	Rate bbl/ min	Volume bbl		Pressure psig		Comments
				Stage	Total	Tubing	Casing	
Start Job	01/08/2012 05:07	1						
Pump Water	01/08/2012 05:07	2	2	5	5		150.0	PUMPED 5 BBLS OF WATER TO FILL LINES
Shutdown	01/08/2012 05:10	3						
Pressure Test	01/08/2012 05:12	4						PRESSURE TEST TO 3400 PSI
Other	01/08/2012 05:12	5						RELEASE IRON PRESSURE
Pump Spacer	01/08/2012 05:13	6	3	15	20		131.0	PUMPED 15 BBLS WATER SPACER TOTAL OF 20 BBLS AHEAD
Pump Lead Cement	01/08/2012 05:17	7	6	87.6	87.6		213.0	MIXED AND PUMPED 165 SKS VARICEM RS1-LEAD AT 11.5 LB/GAL, 2.98 YLD, 18.22 GAL/SK
Pump Tail Cement	01/08/2012 05:38	8	6	57	144.6		333.0	MIXED AND PUMPED 250 SKS W1 PREMIUM- TAIL AT 15.2 LB/GAL, 1.28 YLD, 5.81 GAL/SK
Shutdown	01/08/2012 05:48	9						
Drop Top Plug	01/08/2012 05:49	10						DROP WEATHERFORD TOP PLUG
Pump Displacement - Start	01/08/2012 05:50	11	6	95	95		328.0	PUMP 95 BBLS WATER DISPLACEMENT AT 6 BBL/MIN
Slow Rate	01/08/2012 06:10	12	4	10	105		462.0	PUMPED 10 BBLS WATER DISPLACEMENT AT 4 BBL/MIN
Slow Rate	01/08/2012 06:17	13	2	10	115		523.0	PUMPED 10 BBLS WATER DISPLACEMENT AT 2 BBL/MIN.
Bump Plug	01/08/2012 06:26	14					605.0	BUMPED PLUG, START CASING TEST AT 1500 PSI. FINAL CIRCULATING PRESSURE WAS 744 PSI
Check Floats	01/08/2012 06:29	15					1063. 0	FLOATS HELD WITH 2 BBLS BACK TO PUMP TRUCK

Sold To # : 343491

Ship To # :2900509

Quote # :

Sales Order # :

9189515

SUMMIT Version: 7.2.27

Thursday, January 12, 2012 05:42:00

Cementing Job Log

Activity Description	Date/Time	Cht #	Rate bbl/ min	Volume bbl		Pressure psig		Comments
				Stage	Total	Tubing	Casing	
End Job	01/08/2012 06:30	16						
Safety Meeting - Pre Rig- Down	01/08/2012 06:45							HES CREW TALKED ABOUT RIG DOWN PROCEDURES AND POLICIES AND STANDARDS
Depart Location Safety Meeting	01/08/2012 07:30							TALKED ABOUT ROUTES, STOPS AND HAZARDS OF DRIVING.
Depart Location for Service Center or Other Site	01/08/2012 08:00							CREW LEFT LOCATION
Other	01/08/2012 08:01							GOOD SAFE JOB, RETURNS THROUGHOUT THE JOB, PLUG BUMPED FLOATS HELD WITH 2 BBL BACK, FINAL CIRCULATING PRESSURE WAS 620 PSI, WITH 55 BBLS OF CEMENT BACK TO SURFACE

Sold To # : 343491

Ship To # :2900509

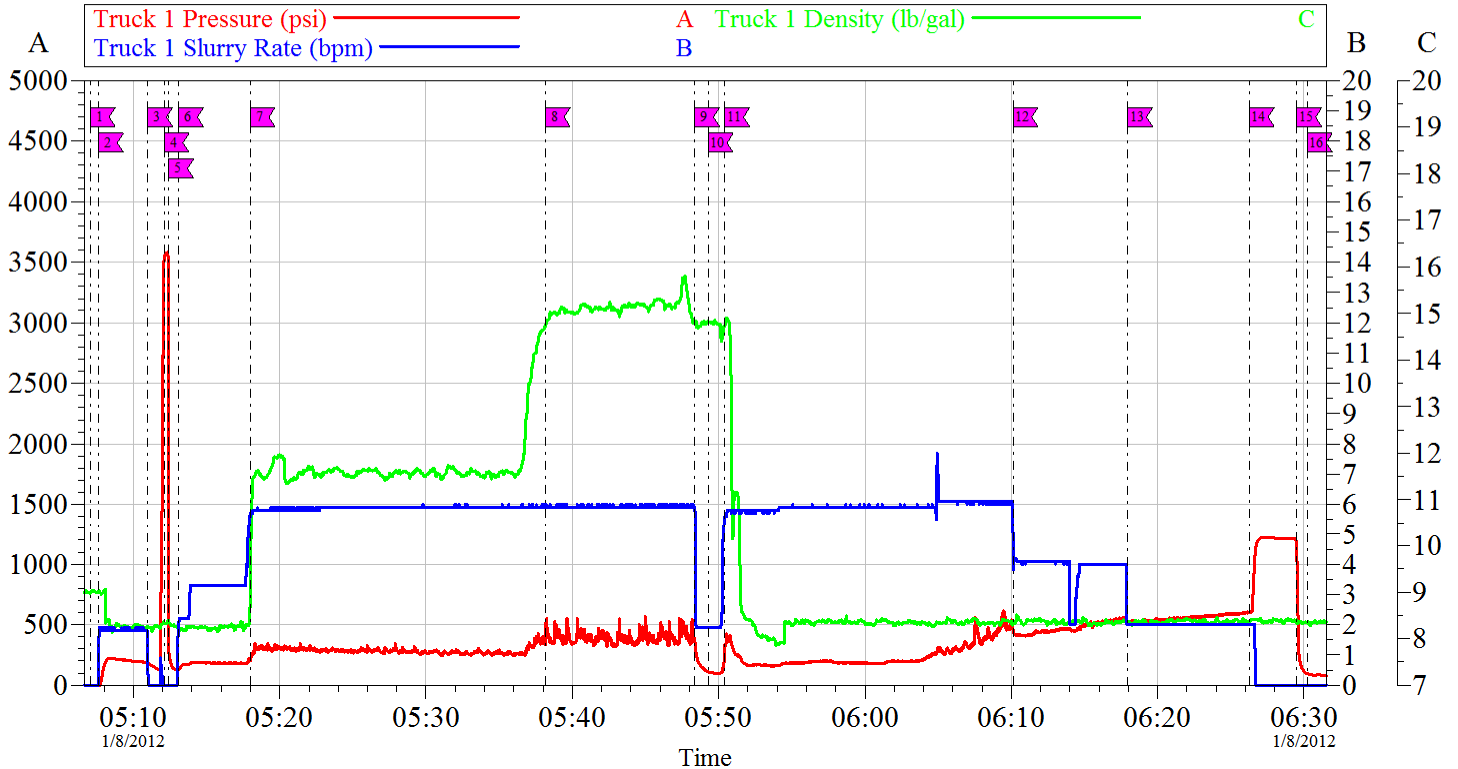
Quote # :

Sales Order # : 9189515

SUMMIT Version: 7.2.27

Thursday, January 12, 2012 05:42:00

WEXPRO SST-88 SURFACE



Intersection				Local Event Log				Intersection				Intersection			
	TiD	TiP	TiSR						TiD	TiP	TiSR		TiD	TiP	TiSR
1 START JOB	05:07:03	9.000	-3.000	0.000	2 FILL LINES	05:07:36	8.981	-3.000	0.012	3 SHUTDOWN	05:10:58	8.260	186.0	1.618	
4 PRESSURE TEST	05:12:06	8.340	3519	0.000	5 RELEASE PRESSURE	05:12:25	8.385	277.0	0.000	6 PUMP SPACER	05:13:05	8.265	131.0	1.800	
7 PUMP LEAD CMNT.	05:17:58	8.894	213.7	5.695	8 PUMP TAIL CMNT.	05:38:08	14.74	333.2	5.900	9 SHUTDOWN	05:48:21	14.83	361.1	5.900	
10 DROP PLUG	05:49:17	14.82	109.2	1.900	11 PUMP DISPLACEMENT	05:50:25	14.74	328.3	5.534	12 SLOW RATE	06:10:07	8.370	462.8	4.757	
13 SLOW RATE	06:17:57	8.367	523.3	2.000	14 BUMP PLUG	06:26:16	8.357	605.4	2.000	15 CHECK FLOATS	06:29:31	8.377	1063	0.000	
16 END JOB	06:30:14	8.356	95.38	0.000											

Customer: WEXPRO	Job Date: 08-Jan-2012	Sales Order #: 9189515
Well Description: 40	SURFACE	J. DENT

OptiCem v6.4.9
08-Jan-12 07:04

Sold To #: 343491

Ship To #: 2900509

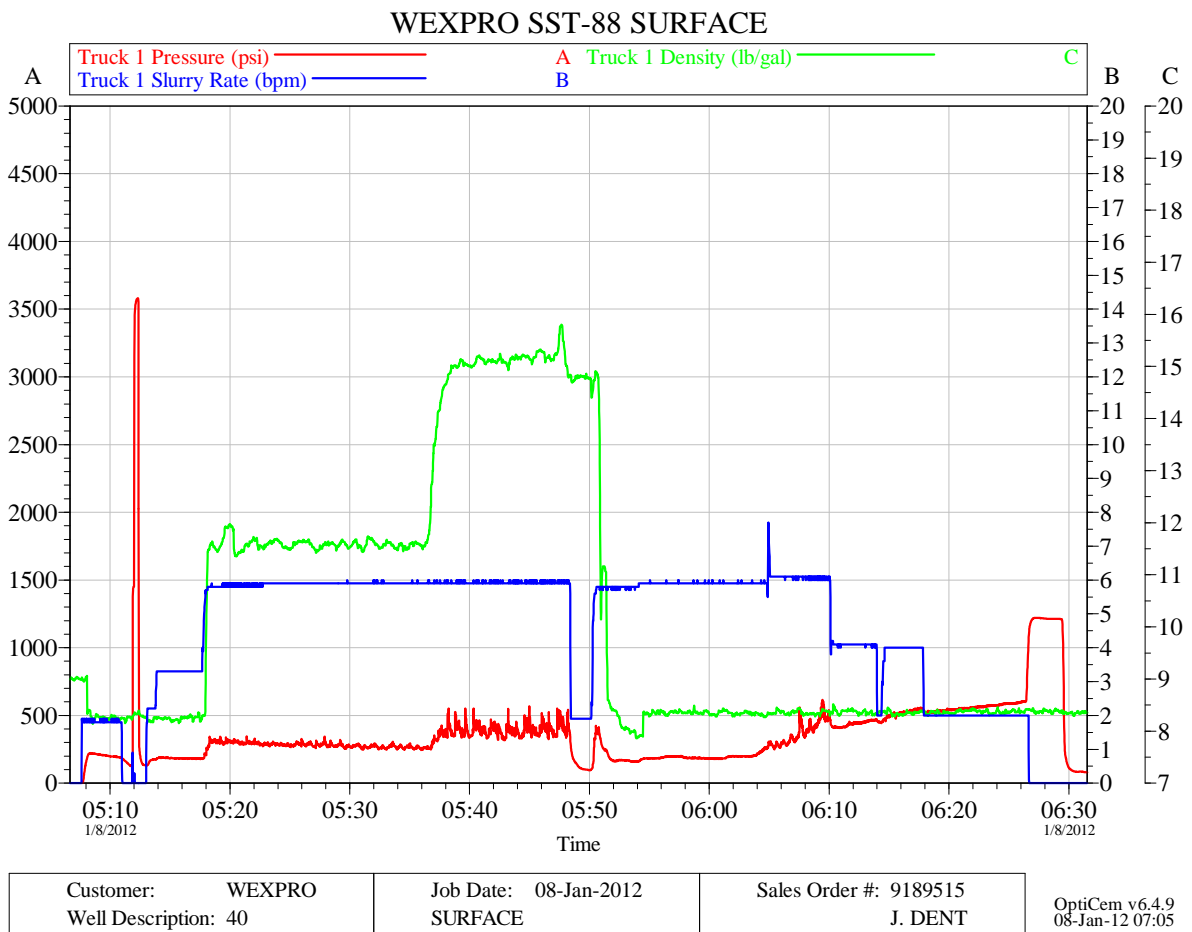
Quote #:

Sales Order #:

9189515

SUMMIT Version: 7.2.27

Thursday, January 12, 2012 05:42:00



Sold To # : 343491

Ship To # :2900509

Quote # :

Sales Order # :

9189515

SUMMIT Version: 7.2.27

Thursday, January 12, 2012 05:42:00

HALLIBURTON

Cementing

Water Analysis Report

COMPANY: WEXPRO Date Recorded 1/8/2012

SUBMITTED BY: DAVID MILSTEN SO# 9189515

LEASE: CARL ALLEN Job Type SURFACE

WELL #: 40 Camp Location Rock Springs

CEMENT MIX WATER REQUIREMENTS

Item	Recorded Test Value	Units	Max. Acceptable Limit	Potential Problems in Exceeding Limit
pH	7	----	6.0 - 8.0	Chemicals in the water can cause severe retardation
Chlorides	0	ppm	3000 ppm	Can shorten thickening time of cement
Sulfates	<200	ppm	1500 ppm	Will greatly decrease the strength of cement
Total Hardness	120	ppm	500 mg/L	High concentrations will accelerate the set of the cement
Calcium	10	ppm	500 ppm	High concentrations will accelerate the set of the cement
Total Alkalinity	180	ppm	1000 ppm	Cement is greatly retarded to the point where it may not set up at all (typically occurs @ pH ≥ 8.3)
Potassium	700	ppm	5000 ppm	High concentrations will shorten the pump time of cement (indicates the presence of chlorides, therefore if
Iron	0.6	ppm	300 ppm	High concentrations will accelerate the set of the cement
Temperature	64.4	°F	50-80 °F	High temps will accelerate; Low temps may risk freezing in cold weather

Item	Approximate Calculated Value	Units	Max. Acceptable Limit	Potential Problems in Exceeding Limit - Calculation Method
Magnesium		ppm	300 ppm	High concentrations will accelerate the set of the cement

Sold To # : 343491

Ship To # :2900509

Quote # :

Sales Order # :

9189515

SUMMIT Version: 7.2.27

Thursday, January 12, 2012 05:42:00