

Steil Surveying Services, LLC

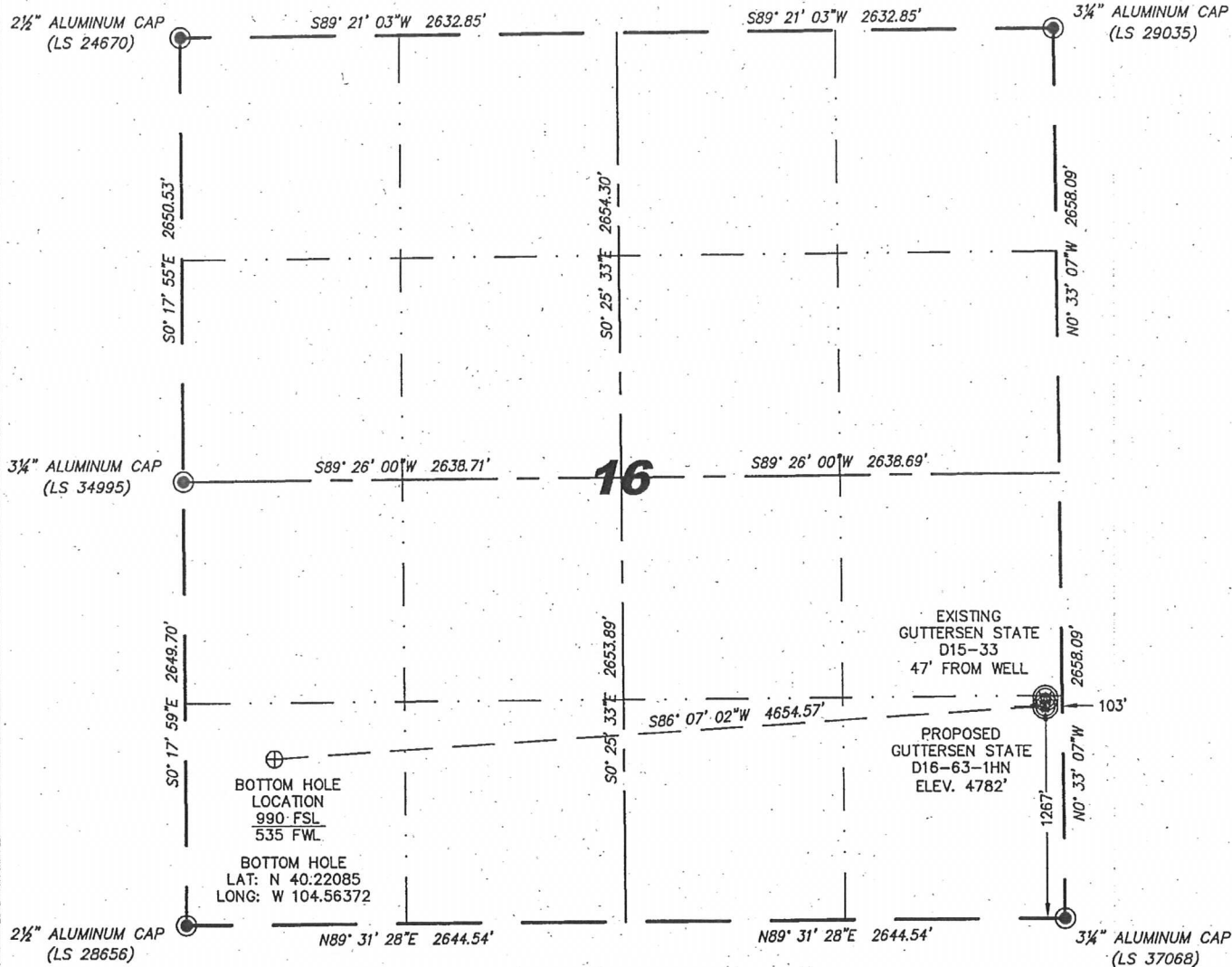
1102 West 19th Street P.O. BOX 2073

Cheyenne, Wyoming 82009

# WELL LOCATION CERTIFICATE

THIS MAP DOES NOT REPRESENT A BOUNDARY SURVEY

SECTION 16  
TOWNSHIP 3 NORTH  
RANGE 64 WEST



0 1000

Scale: 1" = 1000'

IN ACCORDANCE WITH A REQUEST FROM BRIAN DEROSE - NOBLE ENERGY INC., STEIL SURVEYING SERVICES, LLC HAS DETERMINED THE LOCATION OF THE GUTTERSEN STATE D16-63-1HN WELL TO BE 1267' FSL, 103' FEL, AS MEASURED AT NINETY (90) DEGREES FROM THE SECTION LINES, SECTION 16, TOWNSHIP 3 NORTH, RANGE 64 WEST, 6TH PRINCIPLE MERIDIAN, WELD COUNTY, COLORADO.

I HEREBY CERTIFY THAT THIS WELL LOCATION CERTIFICATE WAS PREPARED BY ME, OR UNDER MY DIRECT SUPERVISION, THAT THE FIELD WORK WAS COMPLETED ON 10/27/2011, FOR AND ON BEHALF OF NOBLE ENERGY INC., THAT IT IS NOT A LAND SURVEY PLAT OR AN IMPROVEMENT SURVEY PLAT, AND THAT IT IS NOT TO BE RELIED UPON FOR ESTABLISHMENT OF FENCE, BUILDING, OR OTHER FUTURE IMPROVEMENT LINES.

## NOTES:

- 1) BASIS OF BEARINGS FOR THIS MAP ARE BASED UPON GPS OBSERVATIONS MADE ON 10/19/2011 BETWEEN MONUMENTS LOCATED AT THE SOUTHEAST SECTION CORNER AND THE NORTHEAST SECTION CORNER OF SAID SECTION AND WITH ALL BEARINGS SHOWN HEREON RELATIVE THERETO.
- 2) COORDINATES SHOWN ARE COLORADO STATE PLANE (NORTH ZONE) NAD 83.
- 3) ELEVATIONS ARE BASED UPON NGS OPUS SOLUTION NAVD 88 DATUM.
- 4) THE NEAREST EXISTING WELL IS: GUTTERSEN STATE D15-33, 47' NORTH.
- 5) SEE LOCATION DRAWING FOR ALL IMPROVEMENTS WITHIN VISIBLE IMPROVEMENTS LIMIT.
- 6) THE LOCATION FALLS IN PASTURE LAND.

LATITUDE & LONGITUDE (NAD 83 SURFACE HOLE):

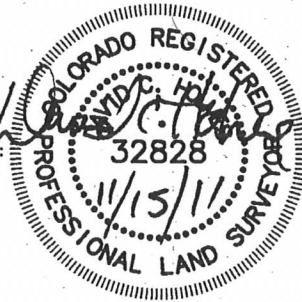
LATITUDE: N 40.22158°

LONGITUDE: W 104.54708°

PDOP: 1.9

QUARTER-QUARTER: SE/4SE/4

NEAREST PROPERTY LINE: 103' TO THE EAST



## LEGEND



FOUND SURVEY MONUMENT PER  
MONUMENT RECORD - EXCEPTIONS NOTED.



CALCULATED DIMENSION

Completed 11/11/2011

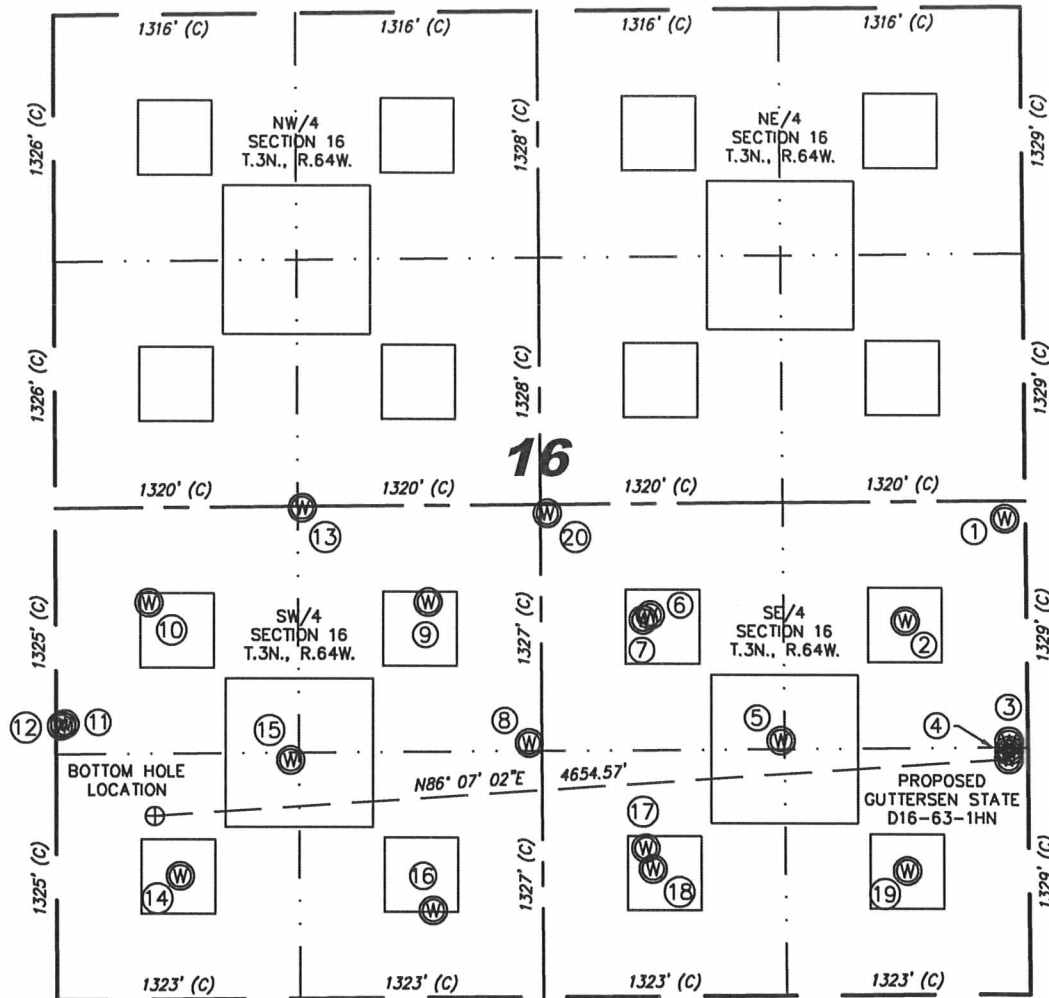
David C. Holmes  
Professional Land Surveyor Registration No. 32828  
State of Colorado

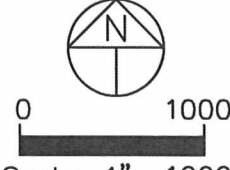
JOB # 11086

NOTICE: According to Colorado law you MUST commence any legal action based upon any defect in this W.L.C. within three years after you first discover such defect. In no event may any action based upon any defect in this W.L.C. be commenced more than ten years from this said date of the certification shown hereon.

SEC. 16, T.3N., R.64W.

# SKETCH - GUTTERSEN STATE D16-63-1HN



① GUTTERSEN STATE D15-32 NE/SE SEC. 16 2562' FSL 111' FEL EL 4791' N 40.22513 W 104.54710 PDOP 2.7	② SPIKE STATE D16-9 NE/SE SEC. 16 2014' FSL 657' FEL EL 4777' N 40.22363 W 104.54906 PDOP 1.9	③ SPIKE STATE D16-99HZ NE/SE SEC. 16 1363' FSL 101' FEL EL 4782' N 40.22184 W 104.54707 PDOP 2.3	④ GUTTERSEN STATE D15-33 SE/SE SEC. 16 1314' FSL 102' FEL EL 4782' N 40.22170 W 104.54708 PDOP 1.9	⑤ DIGGIN STATE D16-23 NW/SE SEC. 16 1375' FSL 1341' FEL EL 4791' N 40.22188 W 104.55151 PDOP 2.1	⑥ GUTTERSEN STATE D16-22D NW/SE SEC. 16 2057' FSL 2047' FEL EL 4772' N 40.22376 W 104.55404 PDOP 2.0	⑦ SPIKE STATE D16-10 NW/SE SEC. 16 2030' FSL 2085' FEL EL 4771' N 40.22368 W 104.55417 PDOP 2.0	⑧ GUTTERSEN STATE D16-24 NE/SW SEC. 16 1370' FSL 2572' FWL EL 4790' N 40.22188 W 104.55642 PDOP 2.1
⑨ SPIKE STATE D16-11 NE/SW SEC. 16 2133' FSL 2027' FWL EL 4771' N 40.22397 W 104.55836 PDOP 2.3	⑩ SPIKE STATE GWS D16-12 NW/SW SEC. 16 2140' FSL 509' FWL EL 4768' N 40.22400 W 104.56379 PDOP 2.0	⑪ GUTTERSEN STATE D16-32D NW/SW SEC. 16 1490' FSL 49' FWL EL 4753' N 40.22222 W 104.56545 PDOP 1.9	⑫ GUTTERSEN STATE D16-33 NW/SW SEC. 16 1480' FSL 29' FWL EL 4753' N 40.22219 W 104.56552 PDOP 1.9	⑬ GUTTERSEN STATE D16-20 NE/SW SEC. 16 2645' FSL 1345' FWL EL 4757' N 40.22538 W 104.56079 PDOP 1.7	⑭ DIGGIN STATE D16-13 SW/SW SEC. 16 667' FSL 672' FWL EL 4764' N 40.21996 W 104.56324 PDOP 2.1	⑮ SPIKE STATE GWS D16-13J SW/SW SEC. 16 1287' FSL 1276' FWL EL 4766' N 40.22166 W 104.56106 PDOP 2.0	⑯ SPIKE STATE GWS D16-14 SE/SW SEC. 16 471' FSL 2046' FWL EL 4786' N 40.21941 W 104.55832 PDOP 2.5
⑰ GUTTERSEN STATE D16-15X SW/SE SEC. 16 800' FSL 2083' FEL EL 4797' N 40.22031 W 104.55417 PDOP 3.3	⑱ SPIKE STATE GWS D16-15 SW/SE SEC. 16 687' FSL 2045' FEL EL 4798' N 40.22000 W 104.55403 PDOP 3.3	⑲ SPIKE STATE GWS D16-16 SE/SE SEC. 16 668' FSL 660' FEL EL 4786' N 40.21994 W 104.54908 PDOP 1.8	⑳ GUTTERSEN STATE D16-21 NW/SE SEC. 16 2606' FSL 2601' FEL EL 4767' N 40.22527 W 104.55602 PDOP 2.1	 <p>Scale: 1" = 1000'</p>			

NOTES:  
1) THIS SKETCH DOES NOT REPRESENT A BOUNDARY SURVEY.  
2) THE DATUM FOR THE LATITUDES AND LONGITUDES ON THIS SKETCH IS NAD83.