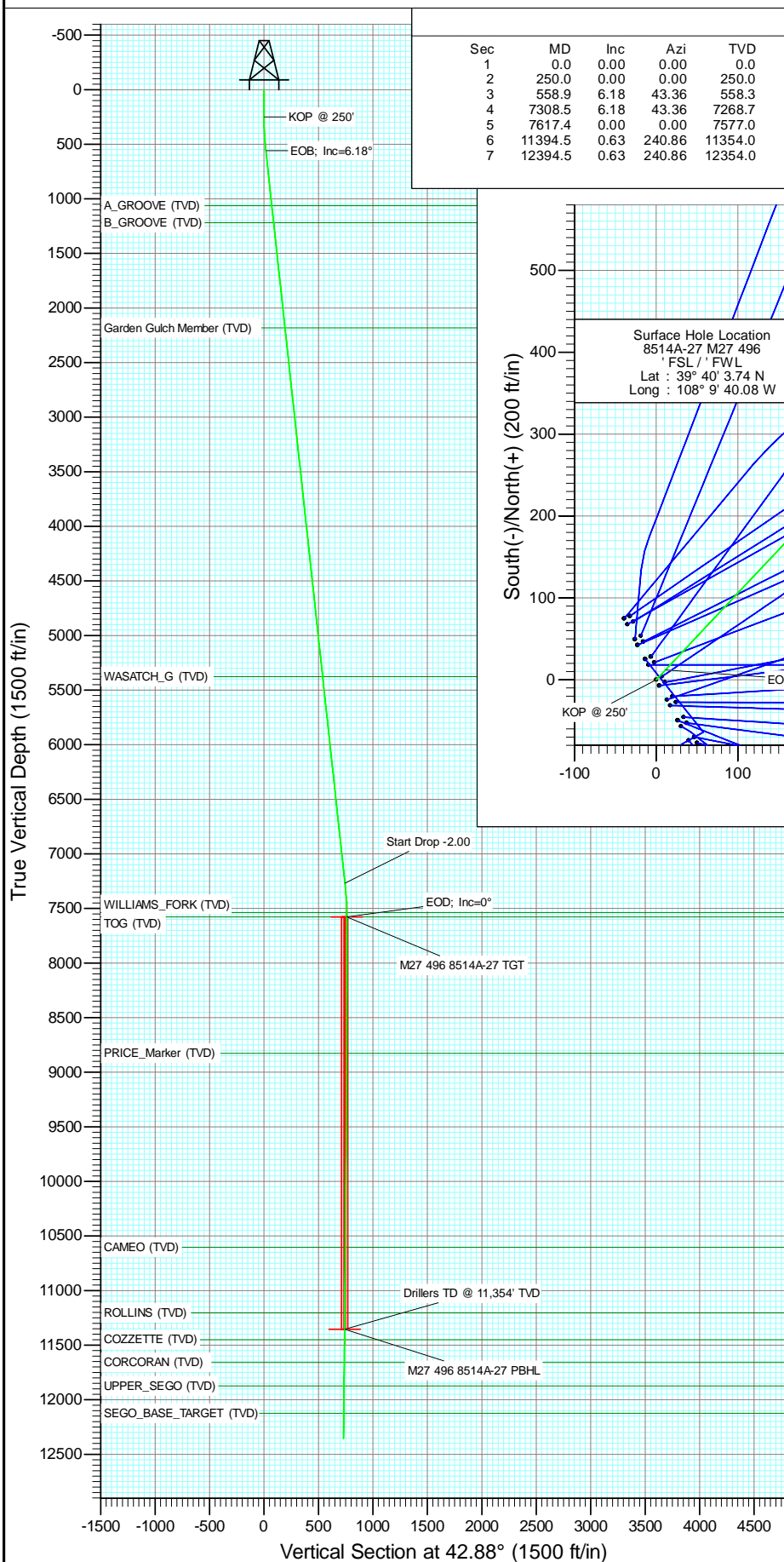


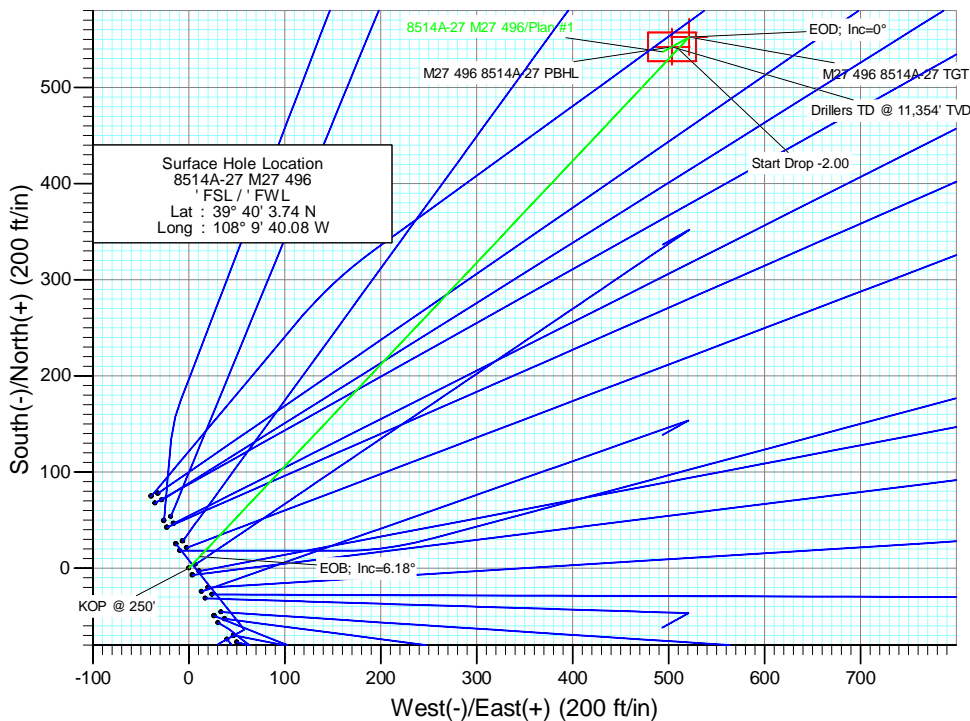


Project: Story Gulch
Site: S27-T4S-R96W (M27 496)
Well: 8514A-27 M27 496
Wellbore: DD
Design: Plan #1



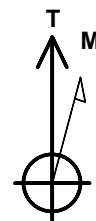
SECTION DETAILS

Sec	MD	Inc	Azi	TVD	+N/-S	+E/-W	Dleg	TFace	VFace	Target
1	0.0	0.00	0.00	0.0	0.0	0.0	0.00	0.00	0.0	
2	250.0	0.00	0.00	250.0	0.0	0.0	0.00	0.00	0.0	
3	558.9	6.18	43.36	558.3	12.1	11.4	2.00	43.36	16.6	
4	7308.5	6.18	43.36	7268.7	540.3	510.2	0.00	0.00	743.1	
5	7617.4	0.00	0.00	7577.0	552.4	521.6	2.00	180.00	759.7	M27 496 8514A-27 TGT
6	11394.5	0.63	240.86	11354.0	542.4	503.6	0.02	240.86	740.1	M27 496 8514A-27 PBHL
7	12394.5	0.63	240.86	12354.0	537.0	494.0	0.00	0.00	729.7	



FORMATION TOP DETAILS

TVDPath	MDPath	Formation
1063.0	1066.5	A_GROOVE (TVD)
1218.0	1222.5	B_GROOVE (TVD)
2181.0	2191.1	Garden Gulch Member (TVD)
5376.0	5404.7	WASATCH_G (TVD)
7537.0	7577.4	WILLIAMS_FORK (TVD)
7577.0	7617.4	TOG (TVD)
8827.0	8867.4	PRICE_Marker (TVD)
10604.0	10644.4	CAMEO (TVD)
11204.0	11244.5	ROLLINS (TVD)
11450.0	11490.5	COZZETTE (TVD)
11659.0	11699.5	CORCORAN (TVD)
11873.0	11913.5	UPPER_SEGO (TVD)
12123.0	12163.5	SEG0_BASE_TARGET (TVD)



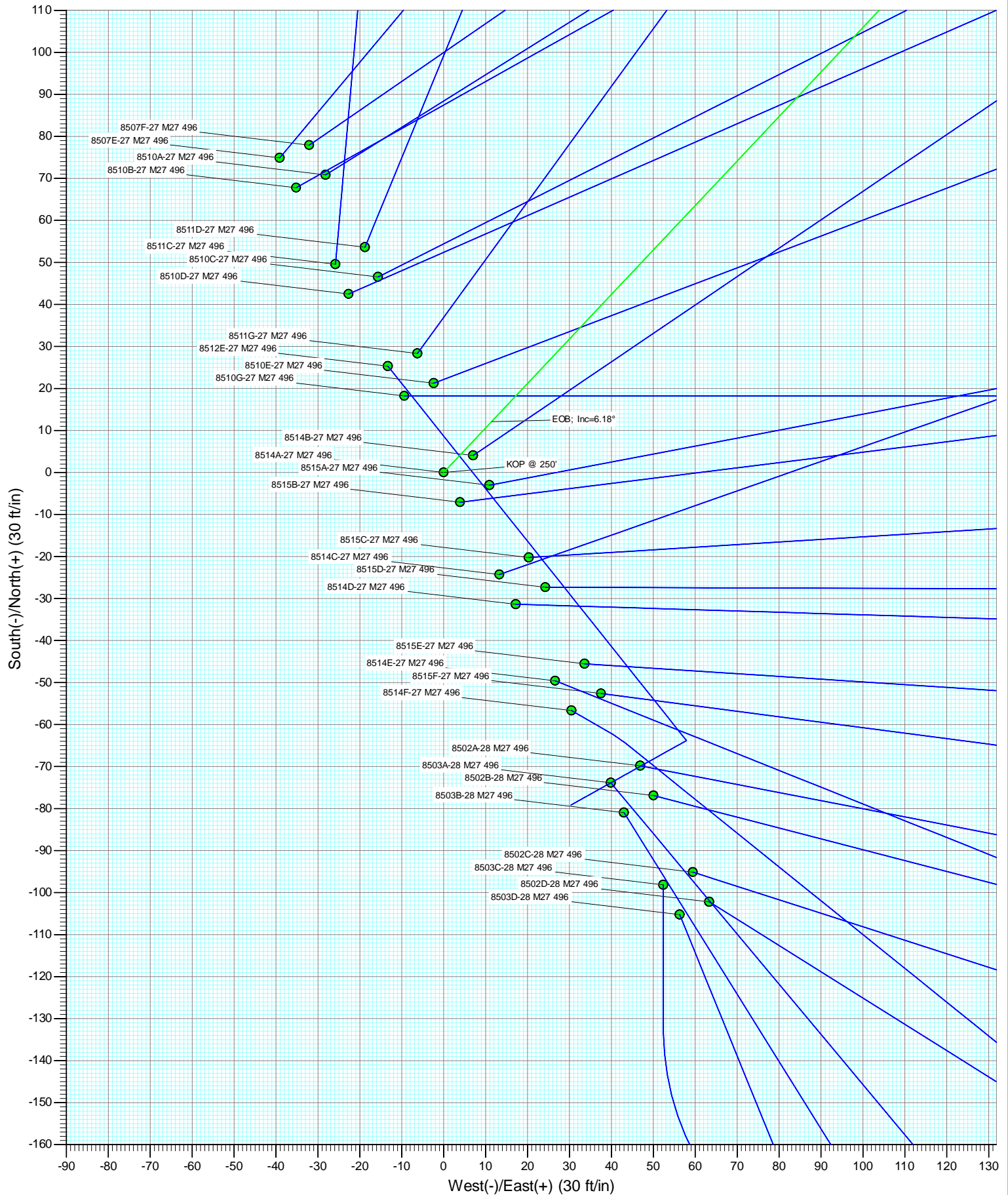
Azimuths to True North
Magnetic North: 10.41°

Magnetic Field
Strength: 52277.7snT
Dip Angle: 65.84°
Date: 9/21/2011
Model: IGRF2010

Type	Target	Target	Azimuth	Origin Type	N/S	E/W	From TVD
		M27 496 8514A-27 PBHL	42.88	Slot	0.0	0.0	0.0
Name	TVD	+N/-S	+E/-W	Latitude	Longitude		
M27 496 8514A-27 TGT	7577.0	552.4	521.6	39° 40' 9.20 N	108° 9' 33.41 W		
M27 496 8514A-27 PBHL	11354.0	542.4	503.6	39° 40' 9.10 N	108° 9' 33.64 W		

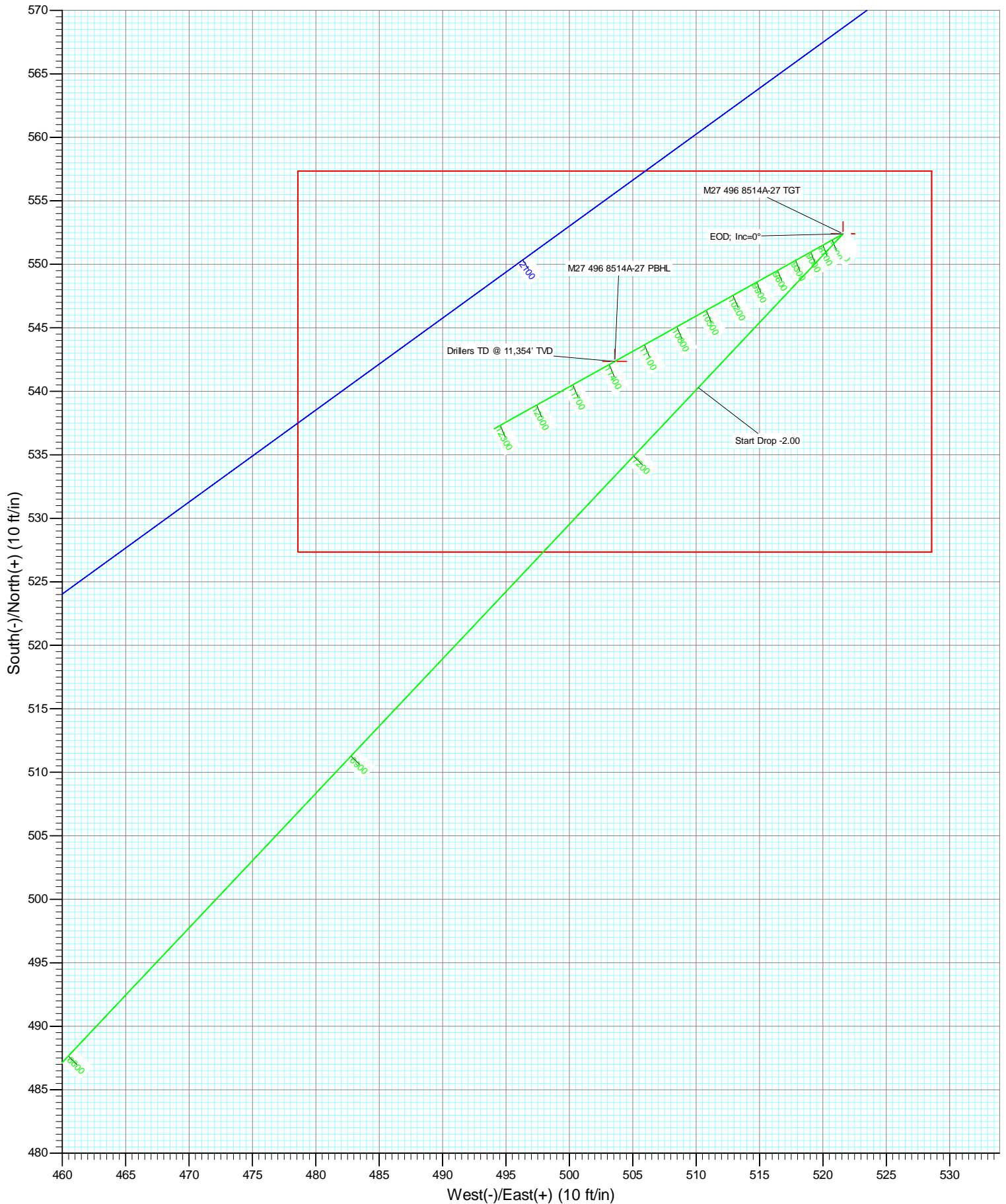


Project: Story Gulch
Site: S27-T4S-R96W (M27 496)
Well: 8514A-27 M27 496
Wellbore: DD
Design: Plan #1





Project: Story Gulch
Site: S27-T4S-R96W (M27 496)
Well: 8514A-27 M27 496
Wellbore: DD
Design: Plan #1



Planning Report

Database:	USA EDM 5000 Multi Users DB	Local Co-ordinate Reference:	Well 8514A-27 M27 496
Company:	EnCana Oil & Gas (USA) Inc	TVD Reference:	KBE @ 8121.0ft (Original Well Elev)
Project:	Story Gulch	MD Reference:	KBE @ 8121.0ft (Original Well Elev)
Site:	S27-T4S-R96W (M27 496)	North Reference:	True
Well:	8514A-27 M27 496	Survey Calculation Method:	Minimum Curvature
Wellbore:	DD		
Design:	Plan #1		

Project	Story Gulch		
Map System:	US State Plane 1983	System Datum:	Mean Sea Level
Geo Datum:	North American Datum 1983		
Map Zone:	Colorado Central Zone		

Site		S27-T4S-R96W (M27 496)			
Site Position:		Northing:	1,678,990.24 ft	Latitude:	39° 40' 3.01 N
From:	Lat/Long	Easting:	2,251,008.33 ft	Longitude:	108° 9' 39.57 W
Position Uncertainty:	0.0 ft	Slot Radius:	13.200 in	Grid Convergence:	-1.68 °

Well	8514A-27 M27 496					
Well Position	+N/-S	0.0 ft	Northing:	1,679,065.23 ft	Latitude:	39° 40' 3.74 N
	+E/-W	0.0 ft	Easting:	2,250,970.63 ft	Longitude:	108° 9' 40.08 W
Position Uncertainty		0.0 ft	Wellhead Elevation:	ft	Ground Level:	8,099.0 ft

Wellbore	DD				
Magnetics	Model Name	Sample Date	Declination (°)	Dip Angle (°)	Field Strength (nT)
	IGRF2010	9/21/2011	10.41	65.84	52,278

Design	Plan #1			
Audit Notes:				
Version:	Phase:	PLAN	Tie On Depth:	0.0
Vertical Section:	Depth From (TVD) (ft)	+N/-S (ft)	+E/-W (ft)	Direction (°)
	0.0	0.0	0.0	42.88

Plan Sections										
Measured Depth (ft)	Inclination (°)	Azimuth (°)	Vertical Depth (ft)	+N/-S (ft)	+E/-W (ft)	Dogleg Rate (°/100ft)	Build Rate (°/100ft)	Turn Rate (°/100ft)	TFO (°)	Target
0.0	0.00	0.00	0.0	0.0	0.0	0.00	0.00	0.00	0.00	
250.0	0.00	0.00	250.0	0.0	0.0	0.00	0.00	0.00	0.00	
558.9	6.18	43.36	558.3	12.1	11.4	2.00	2.00	0.00	43.36	
7,308.5	6.18	43.36	7,268.7	540.3	510.2	0.00	0.00	0.00	0.00	
7,617.4	0.00	0.00	7,577.0	552.4	521.6	2.00	-2.00	0.00	180.00	M27 496 8514A-27 T
11,394.5	0.63	240.86	11,354.0	542.4	503.6	0.02	0.02	-3.15	240.86	M27 496 8514A-27 PI
12,394.5	0.63	240.86	12,354.0	537.0	494.0	0.00	0.00	0.00	0.00	

Planning Report

Database:	USA EDM 5000 Multi Users DB	Local Co-ordinate Reference:	Well 8514A-27 M27 496
Company:	EnCana Oil & Gas (USA) Inc	TVD Reference:	KBE @ 8121.0ft (Original Well Elev)
Project:	Story Gulch	MD Reference:	KBE @ 8121.0ft (Original Well Elev)
Site:	S27-T4S-R96W (M27 496)	North Reference:	True
Well:	8514A-27 M27 496	Survey Calculation Method:	Minimum Curvature
Wellbore:	DD		
Design:	Plan #1		

Planned Survey									
Measured Depth (ft)	Inclination (°)	Azimuth (°)	Vertical Depth (ft)	+N/-S (ft)	+E/-W (ft)	Vertical Section (ft)	Dogleg Rate (°/100ft)	Build Rate (°/100ft)	Comments / Formations
0.0	0.00	0.00	0.0	0.0	0.0	0.0	0.00	0.00	
100.0	0.00	0.00	100.0	0.0	0.0	0.0	0.00	0.00	
200.0	0.00	0.00	200.0	0.0	0.0	0.0	0.00	0.00	
250.0	0.00	0.00	250.0	0.0	0.0	0.0	0.00	0.00	KOP @ 250'
300.0	1.00	43.36	300.0	0.3	0.3	0.4	2.00	2.00	
400.0	3.00	43.36	399.9	2.9	2.7	3.9	2.00	2.00	
500.0	5.00	43.36	499.7	7.9	7.5	10.9	2.00	2.00	
558.9	6.18	43.36	558.3	12.1	11.4	16.6	2.00	2.00	EOB; Inc=6.18°
600.0	6.18	43.36	599.2	15.3	14.5	21.1	0.00	0.00	
700.0	6.18	43.36	698.6	23.1	21.8	31.8	0.00	0.00	
800.0	6.18	43.36	798.0	31.0	29.2	42.6	0.00	0.00	
900.0	6.18	43.36	897.4	38.8	36.6	53.3	0.00	0.00	
1,000.0	6.18	43.36	996.8	46.6	44.0	64.1	0.00	0.00	
1,066.5	6.18	43.36	1,063.0	51.8	48.9	71.3	0.00	0.00	A_GROOVE (TVD)
1,100.0	6.18	43.36	1,096.3	54.4	51.4	74.9	0.00	0.00	
1,200.0	6.18	43.36	1,195.7	62.3	58.8	85.6	0.00	0.00	
1,222.5	6.18	43.36	1,218.0	64.0	60.5	88.1	0.00	0.00	B_GROOVE (TVD)
1,300.0	6.18	43.36	1,295.1	70.1	66.2	96.4	0.00	0.00	
1,400.0	6.18	43.36	1,394.5	77.9	73.6	107.2	0.00	0.00	
1,500.0	6.18	43.36	1,493.9	85.7	81.0	117.9	0.00	0.00	
1,600.0	6.18	43.36	1,593.4	93.6	88.4	128.7	0.00	0.00	
1,700.0	6.18	43.36	1,692.8	101.4	95.7	139.5	0.00	0.00	
1,800.0	6.18	43.36	1,792.2	109.2	103.1	150.2	0.00	0.00	
1,900.0	6.18	43.36	1,891.6	117.0	110.5	161.0	0.00	0.00	
2,000.0	6.18	43.36	1,991.0	124.9	117.9	171.7	0.00	0.00	
2,100.0	6.18	43.36	2,090.4	132.7	125.3	182.5	0.00	0.00	
2,191.1	6.18	43.36	2,181.0	139.8	132.0	192.3	0.00	0.00	Garden Gulch Member (TVD)
2,200.0	6.18	43.36	2,189.9	140.5	132.7	193.3	0.00	0.00	
2,300.0	6.18	43.36	2,289.3	148.4	140.1	204.0	0.00	0.00	
2,400.0	6.18	43.36	2,388.7	156.2	147.5	214.8	0.00	0.00	
2,500.0	6.18	43.36	2,488.1	164.0	154.9	225.6	0.00	0.00	
2,600.0	6.18	43.36	2,587.5	171.8	162.2	236.3	0.00	0.00	
2,700.0	6.18	43.36	2,687.0	179.7	169.6	247.1	0.00	0.00	
2,800.0	6.18	43.36	2,786.4	187.5	177.0	257.8	0.00	0.00	
2,900.0	6.18	43.36	2,885.8	195.3	184.4	268.6	0.00	0.00	
3,000.0	6.18	43.36	2,985.2	203.1	191.8	279.4	0.00	0.00	
3,100.0	6.18	43.36	3,084.6	211.0	199.2	290.1	0.00	0.00	
3,200.0	6.18	43.36	3,184.1	218.8	206.6	300.9	0.00	0.00	
3,300.0	6.18	43.36	3,283.5	226.6	214.0	311.7	0.00	0.00	
3,400.0	6.18	43.36	3,382.9	234.4	221.4	322.4	0.00	0.00	
3,500.0	6.18	43.36	3,482.3	242.3	228.8	333.2	0.00	0.00	
3,600.0	6.18	43.36	3,581.7	250.1	236.1	343.9	0.00	0.00	
3,700.0	6.18	43.36	3,681.2	257.9	243.5	354.7	0.00	0.00	
3,800.0	6.18	43.36	3,780.6	265.7	250.9	365.5	0.00	0.00	
3,900.0	6.18	43.36	3,880.0	273.6	258.3	376.2	0.00	0.00	
4,000.0	6.18	43.36	3,979.4	281.4	265.7	387.0	0.00	0.00	
4,100.0	6.18	43.36	4,078.8	289.2	273.1	397.8	0.00	0.00	
4,200.0	6.18	43.36	4,178.3	297.0	280.5	408.5	0.00	0.00	
4,300.0	6.18	43.36	4,277.7	304.9	287.9	419.3	0.00	0.00	
4,400.0	6.18	43.36	4,377.1	312.7	295.3	430.0	0.00	0.00	
4,500.0	6.18	43.36	4,476.5	320.5	302.6	440.8	0.00	0.00	
4,600.0	6.18	43.36	4,575.9	328.3	310.0	451.6	0.00	0.00	

Planning Report

Database:	USA EDM 5000 Multi Users DB	Local Co-ordinate Reference:	Well 8514A-27 M27 496
Company:	EnCana Oil & Gas (USA) Inc	TVD Reference:	KBE @ 8121.0ft (Original Well Elev)
Project:	Story Gulch	MD Reference:	KBE @ 8121.0ft (Original Well Elev)
Site:	S27-T4S-R96W (M27 496)	North Reference:	True
Well:	8514A-27 M27 496	Survey Calculation Method:	Minimum Curvature
Wellbore:	DD		
Design:	Plan #1		

Planned Survey									
Measured Depth (ft)	Inclination (°)	Azimuth (°)	Vertical Depth (ft)	+N/-S (ft)	+E/-W (ft)	Vertical Section (ft)	Dogleg Rate (°/100ft)	Build Rate (°/100ft)	Comments / Formations
4,700.0	6.18	43.36	4,675.3	336.2	317.4	462.3	0.00	0.00	
4,800.0	6.18	43.36	4,774.8	344.0	324.8	473.1	0.00	0.00	
4,900.0	6.18	43.36	4,874.2	351.8	332.2	483.9	0.00	0.00	
5,000.0	6.18	43.36	4,973.6	359.6	339.6	494.6	0.00	0.00	
5,100.0	6.18	43.36	5,073.0	367.5	347.0	505.4	0.00	0.00	
5,200.0	6.18	43.36	5,172.4	375.3	354.4	516.1	0.00	0.00	
5,300.0	6.18	43.36	5,271.9	383.1	361.8	526.9	0.00	0.00	
5,400.0	6.18	43.36	5,371.3	390.9	369.2	537.7	0.00	0.00	
5,404.7	6.18	43.36	5,376.0	391.3	369.5	538.2	0.00	0.00	WASATCH_G (TVD)
5,500.0	6.18	43.36	5,470.7	398.8	376.5	548.4	0.00	0.00	
5,600.0	6.18	43.36	5,570.1	406.6	383.9	559.2	0.00	0.00	
5,700.0	6.18	43.36	5,669.5	414.4	391.3	570.0	0.00	0.00	
5,800.0	6.18	43.36	5,769.0	422.3	398.7	580.7	0.00	0.00	
5,900.0	6.18	43.36	5,868.4	430.1	406.1	591.5	0.00	0.00	
6,000.0	6.18	43.36	5,967.8	437.9	413.5	602.2	0.00	0.00	
6,100.0	6.18	43.36	6,067.2	445.7	420.9	613.0	0.00	0.00	
6,200.0	6.18	43.36	6,166.6	453.6	428.3	623.8	0.00	0.00	
6,300.0	6.18	43.36	6,266.1	461.4	435.7	634.5	0.00	0.00	
6,400.0	6.18	43.36	6,365.5	469.2	443.0	645.3	0.00	0.00	
6,500.0	6.18	43.36	6,464.9	477.0	450.4	656.1	0.00	0.00	
6,600.0	6.18	43.36	6,564.3	484.9	457.8	666.8	0.00	0.00	
6,700.0	6.18	43.36	6,663.7	492.7	465.2	677.6	0.00	0.00	
6,800.0	6.18	43.36	6,763.1	500.5	472.6	688.4	0.00	0.00	
6,900.0	6.18	43.36	6,862.6	508.3	480.0	699.1	0.00	0.00	
7,000.0	6.18	43.36	6,962.0	516.2	487.4	709.9	0.00	0.00	
7,100.0	6.18	43.36	7,061.4	524.0	494.8	720.6	0.00	0.00	
7,200.0	6.18	43.36	7,160.8	531.8	502.2	731.4	0.00	0.00	
7,300.0	6.18	43.36	7,260.2	539.6	509.5	742.2	0.00	0.00	
7,308.5	6.18	43.36	7,268.7	540.3	510.2	743.1	0.00	0.00	Start Drop -2.00
7,400.0	4.35	43.36	7,359.8	546.4	515.9	751.5	2.00	-2.00	
7,500.0	2.35	43.36	7,459.6	550.7	519.9	757.3	2.00	-2.00	
7,577.4	0.80	43.36	7,537.0	552.2	521.4	759.4	2.00	-2.00	WILLIAMS_FORK (TVD)
7,600.0	0.35	43.36	7,559.6	552.4	521.6	759.7	2.00	-2.00	
7,617.4	0.00	0.00	7,577.0	552.4	521.6	759.7	2.00	-2.00	EOD; Inc=0° - TOG (TVD) - M27 496 8514A-27
7,700.0	0.01	240.86	7,659.6	552.4	521.6	759.7	0.02	0.02	
7,800.0	0.03	240.86	7,759.6	552.4	521.6	759.7	0.02	0.02	
7,900.0	0.05	240.86	7,859.6	552.3	521.5	759.6	0.02	0.02	
8,000.0	0.06	240.86	7,959.6	552.3	521.4	759.5	0.02	0.02	
8,100.0	0.08	240.86	8,059.6	552.2	521.3	759.4	0.02	0.02	
8,200.0	0.10	240.86	8,159.6	552.2	521.2	759.3	0.02	0.02	
8,300.0	0.11	240.86	8,259.6	552.1	521.0	759.1	0.02	0.02	
8,400.0	0.13	240.86	8,359.6	552.0	520.8	758.9	0.02	0.02	
8,500.0	0.15	240.86	8,459.6	551.9	520.6	758.6	0.02	0.02	
8,600.0	0.16	240.86	8,559.6	551.7	520.4	758.4	0.02	0.02	
8,700.0	0.18	240.86	8,659.6	551.6	520.1	758.1	0.02	0.02	
8,800.0	0.20	240.86	8,759.6	551.4	519.8	757.8	0.02	0.02	
8,867.4	0.21	240.86	8,827.0	551.3	519.6	757.6	0.02	0.02	PRICE_Marker (TVD)
8,900.0	0.21	240.86	8,859.6	551.2	519.5	757.5	0.02	0.02	
9,000.0	0.23	240.86	8,959.6	551.1	519.2	757.1	0.02	0.02	
9,100.0	0.25	240.86	9,059.6	550.9	518.8	756.7	0.02	0.02	
9,200.0	0.26	240.86	9,159.6	550.6	518.4	756.3	0.02	0.02	
9,300.0	0.28	240.86	9,259.6	550.4	518.0	755.8	0.02	0.02	

Planning Report

Database:	USA EDM 5000 Multi Users DB	Local Co-ordinate Reference:	Well 8514A-27 M27 496
Company:	EnCana Oil & Gas (USA) Inc	TVD Reference:	KBE @ 8121.0ft (Original Well Elev)
Project:	Story Gulch	MD Reference:	KBE @ 8121.0ft (Original Well Elev)
Site:	S27-T4S-R96W (M27 496)	North Reference:	True
Well:	8514A-27 M27 496	Survey Calculation Method:	Minimum Curvature
Wellbore:	DD		
Design:	Plan #1		

Planned Survey									
Measured Depth (ft)	Inclination (°)	Azimuth (°)	Vertical Depth (ft)	+N/-S (ft)	+E/-W (ft)	Vertical Section (ft)	Dogleg Rate (°/100ft)	Build Rate (°/100ft)	Comments / Formations
9,400.0	0.30	240.86	9,359.6	550.2	517.6	755.3	0.02	0.02	
9,500.0	0.31	240.86	9,459.6	549.9	517.1	754.8	0.02	0.02	
9,600.0	0.33	240.86	9,559.6	549.6	516.6	754.3	0.02	0.02	
9,700.0	0.35	240.86	9,659.6	549.3	516.1	753.8	0.02	0.02	
9,800.0	0.36	240.86	9,759.6	549.0	515.6	753.2	0.02	0.02	
9,900.0	0.38	240.86	9,859.6	548.7	515.0	752.6	0.02	0.02	
10,000.0	0.39	240.86	9,959.6	548.4	514.4	751.9	0.02	0.02	
10,100.0	0.41	240.86	10,059.6	548.1	513.8	751.2	0.02	0.02	
10,200.0	0.43	240.86	10,159.6	547.7	513.2	750.5	0.02	0.02	
10,300.0	0.44	240.86	10,259.6	547.3	512.5	749.8	0.02	0.02	
10,400.0	0.46	240.86	10,359.6	546.9	511.8	749.1	0.02	0.02	
10,500.0	0.48	240.86	10,459.6	546.6	511.1	748.3	0.02	0.02	
10,600.0	0.49	240.86	10,559.6	546.1	510.4	747.5	0.02	0.02	
10,644.4	0.50	240.86	10,604.0	545.9	510.0	747.1	0.02	0.02	CAMEO (TVD)
10,700.0	0.51	240.86	10,659.6	545.7	509.6	746.7	0.02	0.02	
10,800.0	0.53	240.86	10,759.5	545.3	508.8	745.8	0.02	0.02	
10,900.0	0.54	240.86	10,859.5	544.8	508.0	744.9	0.02	0.02	
11,000.0	0.56	240.86	10,959.5	544.3	507.2	744.0	0.02	0.02	
11,100.0	0.58	240.86	11,059.5	543.9	506.3	743.0	0.02	0.02	
11,200.0	0.59	240.86	11,159.5	543.4	505.4	742.1	0.02	0.02	
11,244.5	0.60	240.86	11,204.0	543.1	505.0	741.6	0.02	0.02	ROLLINS (TVD)
11,300.0	0.61	240.86	11,259.5	542.9	504.5	741.1	0.02	0.02	
11,394.5	0.63	240.86	11,354.0	542.4	503.6	740.1	0.02	0.02	Drillers TD @ 11,354' TVD - M27 496 8514A-27
11,400.0	0.63	240.86	11,359.5	542.3	503.5	740.0	0.00	0.00	
11,490.5	0.63	240.86	11,450.0	541.8	502.7	739.1	0.00	0.00	COZZETTE (TVD)
11,500.0	0.63	240.86	11,459.5	541.8	502.6	739.0	0.00	0.00	
11,600.0	0.63	240.86	11,559.5	541.3	501.6	738.0	0.00	0.00	
11,699.5	0.63	240.86	11,659.0	540.7	500.7	736.9	0.00	0.00	CORCORAN (TVD)
11,700.0	0.63	240.86	11,659.5	540.7	500.7	736.9	0.00	0.00	
11,800.0	0.63	240.86	11,759.5	540.2	499.7	735.9	0.00	0.00	
11,900.0	0.63	240.86	11,859.5	539.7	498.8	734.8	0.00	0.00	
11,913.5	0.63	240.86	11,873.0	539.6	498.6	734.7	0.00	0.00	UPPER_SEGO (TVD)
12,000.0	0.63	240.86	11,959.5	539.1	497.8	733.8	0.00	0.00	
12,100.0	0.63	240.86	12,059.5	538.6	496.9	732.8	0.00	0.00	
12,163.5	0.63	240.86	12,123.0	538.3	496.2	732.1	0.00	0.00	SEGO_BASE_TARGET (TVD)
12,200.0	0.63	240.86	12,159.5	538.1	495.9	731.7	0.00	0.00	
12,300.0	0.63	240.86	12,259.5	537.5	494.9	730.7	0.00	0.00	
12,394.5	0.63	240.86	12,354.0	537.0	494.0	729.7	0.00	0.00	Permit TD @ 12,354' TVD

Targets									
Target Name	Dip Angle (°)	Dip Dir. (°)	TVD (ft)	+N/-S (ft)	+E/-W (ft)	Northing (ft)	Easting (ft)	Latitude	Longitude
M27 496 8514A-27 PBH	0.00	0.00	11,354.0	542.4	503.6	1,679,592.61	2,251,489.88	39° 40' 9.10 N	108° 9' 33.64 W
- plan hits target center									
- Rectangle (sides W30.0 H50.0 D0.0)									
M27 496 8514A-27 TGT	0.00	0.00	7,577.0	552.4	521.6	1,679,602.12	2,251,508.18	39° 40' 9.20 N	108° 9' 33.41 W
- plan hits target center									
- Point									

Planning Report

Database:	USA EDM 5000 Multi Users DB	Local Co-ordinate Reference:	Well 8514A-27 M27 496
Company:	EnCana Oil & Gas (USA) Inc	TVD Reference:	KBE @ 8121.0ft (Original Well Elev)
Project:	Story Gulch	MD Reference:	KBE @ 8121.0ft (Original Well Elev)
Site:	S27-T4S-R96W (M27 496)	North Reference:	True
Well:	8514A-27 M27 496	Survey Calculation Method:	Minimum Curvature
Wellbore:	DD		
Design:	Plan #1		

Formations						
Measured Depth (ft)	Vertical Depth (ft)	Name	Lithology	Dip (°)	Dip Direction (°)	
1,066.5	1,063.0	A_GROOVE (TVD)				
1,222.5	1,218.0	B_GROOVE (TVD)				
2,191.1	2,181.0	Garden Gulch Member (TVD)				
5,404.7	5,376.0	WASATCH_G (TVD)				
7,577.4	7,537.0	WILLIAMS_FORK (TVD)				
7,617.4	7,577.0	TOG (TVD)				
8,867.4	8,827.0	PRICE_Marker (TVD)				
10,644.4	10,604.0	CAMEO (TVD)				
11,244.5	11,204.0	ROLLINS (TVD)				
11,490.5	11,450.0	COZZETTE (TVD)				
11,699.5	11,659.0	CORCORAN (TVD)				
11,913.5	11,873.0	UPPER_SEGO (TVD)				
12,163.5	12,123.0	SEGO_BASE_TARGET (TVD)				

Plan Annotations					
Measured Depth (ft)	Vertical Depth (ft)	Local Coordinates			
		+N/-S (ft)	+E/-W (ft)	Comment	
250.0	250.0	0.0	0.0	KOP @ 250'	
558.9	558.3	12.1	11.4	EOB; Inc=6.18°	
7,308.5	7,268.7	540.3	510.2	Start Drop -2.00	
7,617.4	7,577.0	552.4	521.6	EOD; Inc=0°	
11,394.5	11,354.0	542.4	503.6	Drillers TD @ 11,354' TVD	
12,394.5	12,354.0	537.0	494.0	Permit TD @ 12,354' TVD	