

Great Western

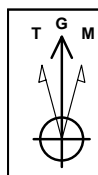
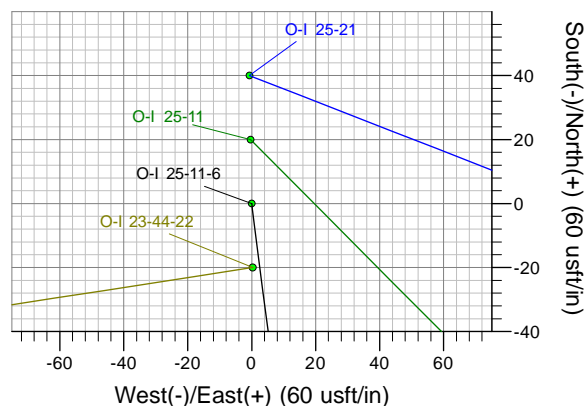
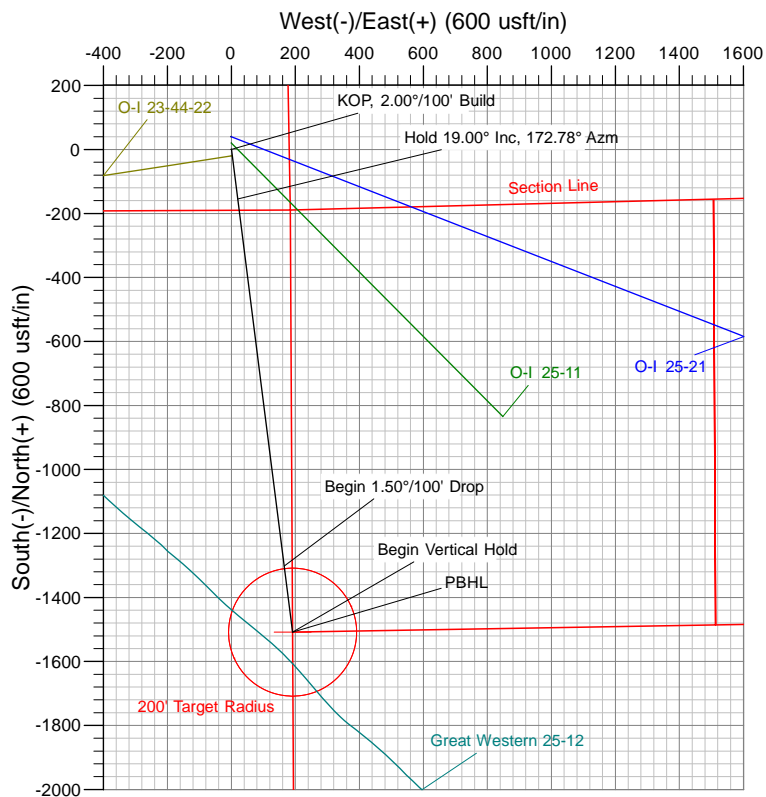
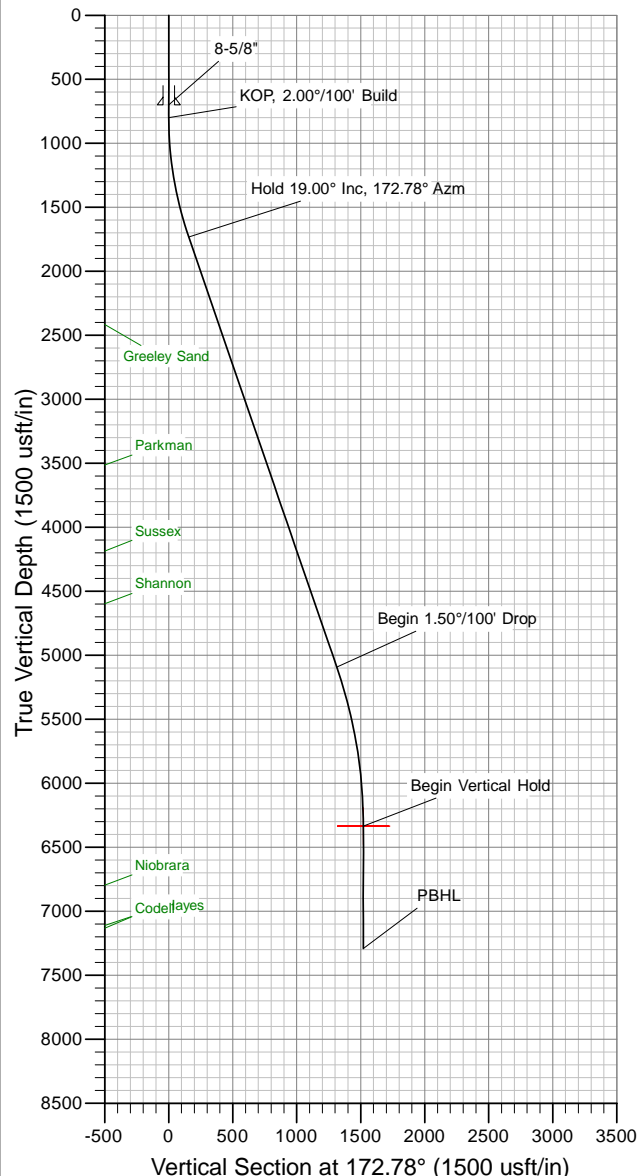
Company: Great Western
 Site: O-I
 Well: 25-11-6
 Project: Weld County, Colorado (NAD 83)
 Rig Name: Cade 22



Planning: 936.442.2510 Fax: 936.442.2515
 Operations: 936.442.2500 Fax: 936.442.2599

ANNOTATIONS

MD	Inc	Azi	TVD	+N/-S	+E/-W	Vsect	Departure	Annotation
800.00	0.00	0.00	800.00	0.00	0.00	0.00	0.00	KOP, 2.00°/100' Build
1749.78	19.00	172.78	1732.48	-154.77	19.62	156.01	156.01	Hold 19.00° Inc, 172.78° Azm
5302.47	19.00	172.78	5091.70	-1301.97	165.02	1312.39	1312.39	Begin 1.50°/100' Drop
6568.84	0.00	0.00	6335.00	-1508.33	191.18	1520.40	1520.40	Begin Vertical Hold
7524.84	0.00	0.00	7291.00	-1508.33	191.18	1520.40	1520.40	PBHL



Azimuths to Grid North
 True North: -0.42°
 Magnetic North: 8.43°
 Magnetic Field
 Strength: 53120.2snT
 Dip Angle: 67.07°
 Date: 11/21/2011
 Model: WMM_2010

US State Plane 1983
 Colorado Northern Zone

Created By: Allen Slack
 Date: 16:34, November 21 2011
 Plan: Design #1

The customer should only rely on this document after independently verifying all paths, targets, coordinates, lease and hard lines represented. Any decisions made or wells drilled utilizing this or any other information supplied by MS Energy are at the sole risk and responsibility of the customer. MS Energy is not responsible for the accuracy of this schematic or the information contained herein.