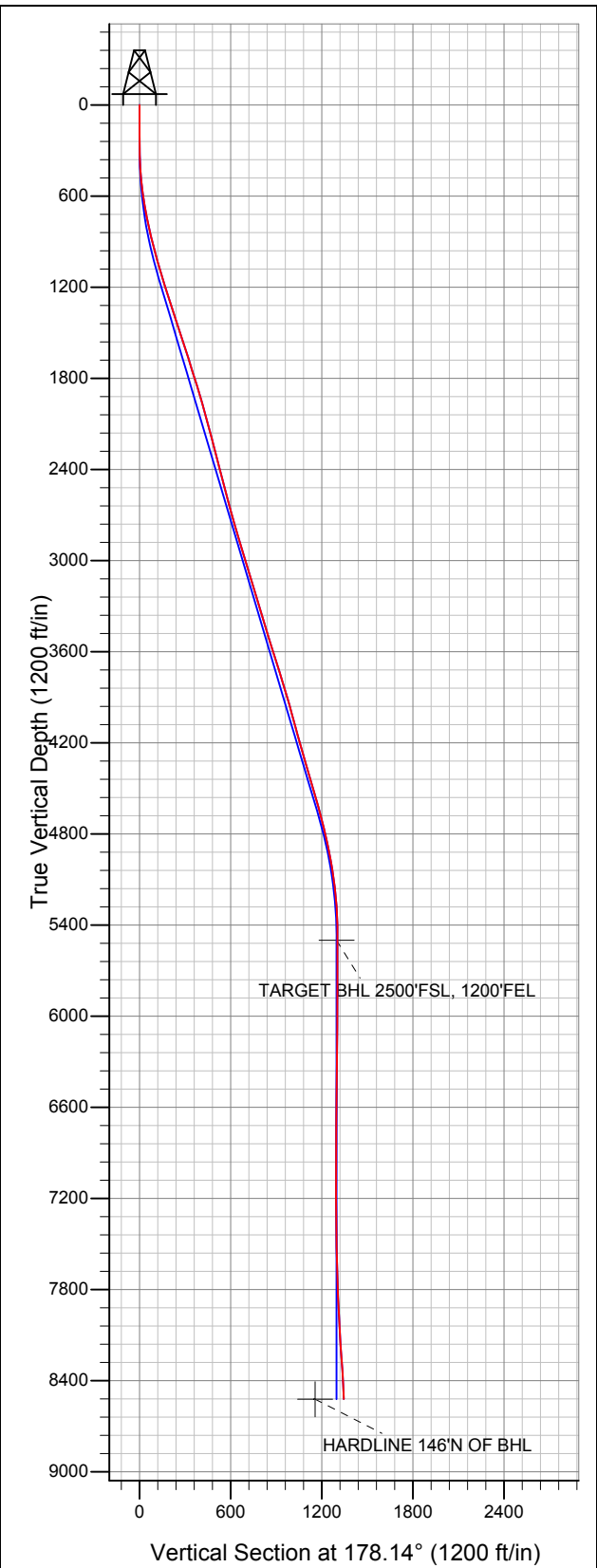


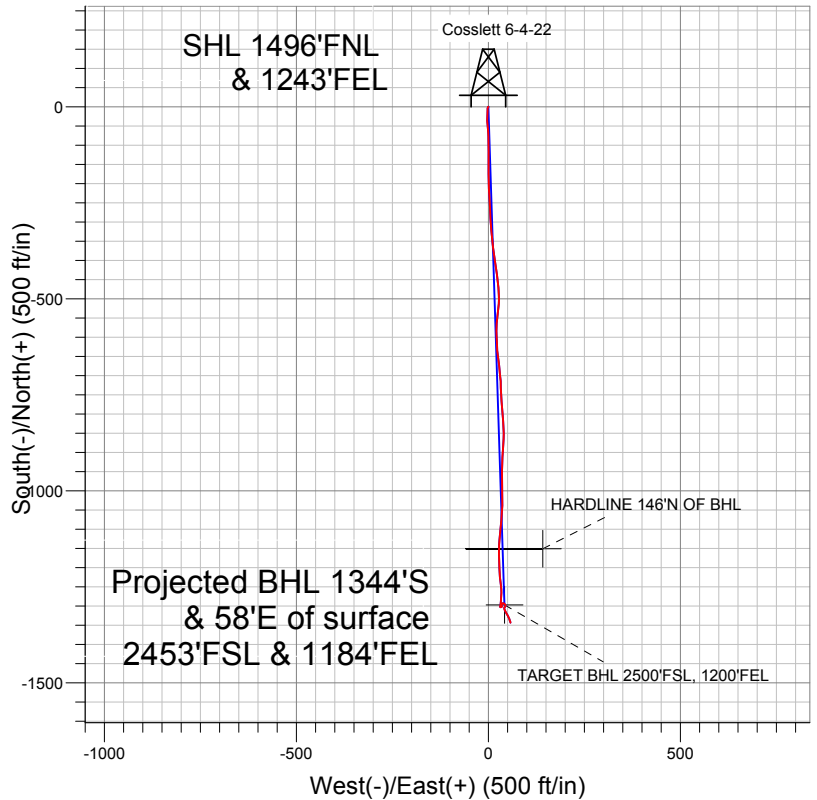


Well Name: Cosslett 6-4-22

Surface Location: Cosslett 4-0-22 Pad Sec.22-T1N-R68W
North American Datum 1983 US State Plane 1983 Colorado Northern Zone
Ground Elevation: 5185.0
+N/-S +E/-W Northing Easting Latitude Longitude Slot
0.0 0.0 1257775.43 3144336.82 40.039830 -104.984490
Original Well Elev WELL @ 5198.0ft (Original Well Elev)



EnCana Oil & Gas Weld County CO



LEGEND

- ◆ Cosslett 6-4-22, Wellbore #1, Plan #1 (10-11-11) V0
- Wellbore #1
- Survey #1

Final Survey Plot

Projected Final Survey -
8701'MD & 8521'TVD @ 1345'VS
2.6 deg Inc 161.0 deg AZ

Project: SEC.22-T1N-R68W
Site: Cosslett 4-0-22 Pad Sec.22-T1N-R68W
Well: Cosslett 6-4-22
Plan: Wellbore #1



EnCana Oil & Gas Weld County CO

SEC.22-T1N-R68W

Cosslett 4-0-22 Pad Sec.22-T1N-R68W

Cosslett 6-4-22

Wellbore #1

Survey: Survey #1

Standard Survey Report

17 November, 2011

Company:	EnCana Oil & Gas Weld County CO	Local Co-ordinate Reference:	Well Cosslett 6-4-22
Project:	SEC.22-T1N-R68W	TVD Reference:	WELL @ 5198.0ft (Original Well Elev)
Site:	Cosslett 4-0-22 Pad Sec.22-T1N-R68W	MD Reference:	WELL @ 5198.0ft (Original Well Elev)
Well:	Cosslett 6-4-22	North Reference:	True
Wellbore:	Wellbore #1	Survey Calculation Method:	Minimum Curvature
Design:	Wellbore #1	Database:	Landmark

Survey

Measured Depth (ft)	Inclination (°)	Azimuth (°)	Vertical Depth (ft)	+N/-S (ft)	+E/-W (ft)	Vertical Section (ft)	Dogleg Rate (°/100ft)	Build Rate (°/100ft)	Turn Rate (°/100ft)
1,245.0	17.20	180.60	1,224.5	-177.3	0.8	177.2	0.33	0.32	0.32
1,338.0	17.40	177.60	1,313.3	-204.9	1.2	204.9	0.98	0.22	-3.23
1,431.0	18.40	176.80	1,401.8	-233.5	2.6	233.5	1.11	1.08	-0.86
1,525.0	17.90	176.80	1,491.1	-262.7	4.2	262.7	0.53	-0.53	0.00
1,619.0	18.60	176.60	1,580.4	-292.1	5.9	292.2	0.75	0.74	-0.21
1,712.0	17.80	175.20	1,668.8	-321.1	8.0	321.2	0.98	-0.86	-1.51
1,806.0	17.40	174.10	1,758.4	-349.4	10.6	349.6	0.55	-0.43	-1.17
1,899.0	17.50	173.10	1,847.1	-377.1	13.7	377.4	0.34	0.11	-1.08
1,993.0	16.10	171.30	1,937.1	-404.0	17.4	404.4	1.59	-1.49	-1.91
2,086.0	15.30	171.30	2,026.6	-428.9	21.2	429.4	0.86	-0.86	0.00
2,180.0	15.30	173.80	2,117.3	-453.5	24.4	454.0	0.70	0.00	2.66
2,273.0	14.50	175.50	2,207.1	-477.3	26.7	477.9	0.98	-0.86	1.83
2,367.0	14.90	180.30	2,298.1	-501.1	27.5	501.7	1.36	0.43	5.11
2,460.0	14.80	185.90	2,388.0	-524.9	26.3	525.5	1.55	-0.11	6.02
2,554.0	14.20	188.90	2,479.0	-548.2	23.2	548.7	1.02	-0.64	3.19
2,647.0	14.80	181.20	2,569.0	-571.4	21.2	571.7	2.17	0.65	-8.28
2,741.0	15.30	177.60	2,659.8	-595.8	21.5	596.1	1.13	0.53	-3.83
2,834.0	16.60	177.50	2,749.2	-621.3	22.6	621.7	1.40	1.40	-0.11
2,927.0	16.20	172.60	2,838.4	-647.4	24.8	647.9	1.55	-0.43	-5.27
3,021.0	16.40	173.60	2,928.6	-673.6	28.0	674.2	0.37	0.21	1.06
3,114.0	17.40	174.00	3,017.6	-700.5	30.9	701.1	1.08	1.08	0.43
3,208.0	17.40	178.50	3,107.3	-728.5	32.8	729.2	1.43	0.00	4.79
3,303.0	16.40	178.00	3,198.2	-756.1	33.6	756.8	1.06	-1.05	-0.53
3,397.0	16.20	175.20	3,288.5	-782.5	35.2	783.2	0.86	-0.21	-2.98
3,490.0	16.80	173.80	3,377.6	-808.7	37.7	809.5	0.77	0.65	-1.51
3,584.0	17.90	177.10	3,467.3	-836.7	39.9	837.5	1.57	1.17	3.51
3,677.0	17.80	182.70	3,555.9	-865.2	39.9	866.0	1.85	-0.11	6.02
3,771.0	17.40	184.00	3,645.5	-893.5	38.3	894.3	0.60	-0.43	1.38
3,864.0	17.10	183.10	3,734.3	-921.1	36.6	921.8	0.43	-0.32	-0.97
3,959.0	17.00	181.20	3,825.1	-948.9	35.5	949.5	0.60	-0.11	-2.00
4,054.0	16.40	179.20	3,916.1	-976.2	35.4	976.8	0.87	-0.63	-2.11
4,148.0	15.10	177.30	4,006.6	-1,001.7	36.2	1,002.3	1.49	-1.38	-2.02
4,242.0	15.00	180.10	4,097.4	-1,026.1	36.7	1,026.7	0.78	-0.11	2.98
4,335.0	16.00	184.50	4,187.0	-1,050.9	35.7	1,051.5	1.66	1.08	4.73
4,429.0	15.70	185.00	4,277.4	-1,076.5	33.6	1,077.0	0.35	-0.32	0.53
4,522.0	16.60	186.10	4,366.7	-1,102.2	31.1	1,102.6	1.02	0.97	1.18
4,616.0	16.90	184.20	4,456.7	-1,129.2	28.7	1,129.5	0.66	0.32	-2.02
4,709.0	16.50	178.70	4,545.8	-1,155.9	28.0	1,156.2	1.75	-0.43	-5.91
4,802.0	14.90	179.80	4,635.4	-1,181.0	28.3	1,181.3	1.75	-1.72	1.18
4,896.0	13.10	178.90	4,726.6	-1,203.8	28.6	1,204.1	1.93	-1.91	-0.96
4,989.0	13.10	172.90	4,817.1	-1,224.8	30.1	1,225.1	1.46	0.00	-6.45
5,083.0	12.00	173.40	4,908.9	-1,245.1	32.5	1,245.5	1.18	-1.17	0.53
5,177.0	10.00	179.60	5,001.2	-1,262.9	33.7	1,263.4	2.47	-2.13	6.60
5,270.0	7.90	183.50	5,093.0	-1,277.4	33.3	1,277.8	2.35	-2.26	4.19
5,364.0	5.50	182.40	5,186.4	-1,288.3	32.8	1,288.7	2.56	-2.55	-1.17
5,457.0	4.60	190.30	5,279.0	-1,296.5	31.9	1,296.8	1.22	-0.97	8.49
5,551.0	1.80	190.80	5,372.9	-1,301.6	31.0	1,301.9	2.98	-2.98	0.53
5,644.0	1.00	84.30	5,465.8	-1,303.0	31.5	1,303.3	2.47	-0.86	-114.52
5,678.3	0.89	83.10	5,500.2	-1,302.9	32.1	1,303.3	0.33	-0.32	-3.51
TARGET BHL 2500'FSL, 1200'FEL									
5,738.0	0.70	80.10	5,559.8	-1,302.8	32.9	1,303.2	0.33	-0.32	-5.02
5,831.0	0.60	58.30	5,652.8	-1,302.4	33.9	1,302.8	0.28	-0.11	-23.44
5,925.0	0.40	50.40	5,746.8	-1,302.0	34.5	1,302.4	0.22	-0.21	-8.40
6,018.0	0.40	51.40	5,839.8	-1,301.6	35.0	1,302.0	0.01	0.00	1.08

Company:	EnCana Oil & Gas Weld County CO	Local Co-ordinate Reference:	Well Cosslett 6-4-22
Project:	SEC.22-T1N-R68W	TVD Reference:	WELL @ 5198.0ft (Original Well Elev)
Site:	Cosslett 4-0-22 Pad Sec.22-T1N-R68W	MD Reference:	WELL @ 5198.0ft (Original Well Elev)
Well:	Cosslett 6-4-22	North Reference:	True
Wellbore:	Wellbore #1	Survey Calculation Method:	Minimum Curvature
Design:	Wellbore #1	Database:	Landmark

Survey									
Measured Depth (ft)	Inclination (°)	Azimuth (°)	Vertical Depth (ft)	+N/-S (ft)	+E/-W (ft)	Vertical Section (ft)	Dogleg Rate (°/100ft)	Build Rate (°/100ft)	Turn Rate (°/100ft)
6,112.0	0.40	33.50	5,933.8	-1,301.1	35.5	1,301.5	0.13	0.00	-19.04
6,206.0	0.40	11.20	6,027.8	-1,300.5	35.7	1,301.0	0.16	0.00	-23.72
6,299.0	0.40	337.10	6,120.8	-1,299.9	35.6	1,300.3	0.25	0.00	-36.67
6,361.0	0.40	301.00	6,182.8	-1,299.6	35.4	1,300.0	0.40	0.00	-58.23
6,455.0	0.40	321.80	6,276.8	-1,299.1	34.9	1,299.6	0.15	0.00	22.13
6,549.0	0.60	4.30	6,370.8	-1,298.4	34.7	1,298.8	0.43	0.21	45.21
6,643.0	0.40	338.80	6,464.8	-1,297.6	34.6	1,298.0	0.31	-0.21	-27.13
6,736.0	0.70	350.40	6,557.8	-1,296.7	34.4	1,297.2	0.34	0.32	12.47
6,830.0	0.80	11.40	6,651.8	-1,295.5	34.5	1,295.9	0.31	0.11	22.34
6,924.0	0.70	45.10	6,745.8	-1,294.5	35.0	1,294.9	0.47	-0.11	35.85
7,017.0	1.10	63.60	6,838.8	-1,293.7	36.2	1,294.2	0.53	0.43	19.89
7,111.0	1.00	75.70	6,932.8	-1,293.1	37.8	1,293.6	0.26	-0.11	12.87
7,204.0	0.60	83.10	7,025.8	-1,292.8	39.1	1,293.4	0.44	-0.43	7.96
7,298.0	0.20	56.40	7,119.7	-1,292.7	39.7	1,293.3	0.46	-0.43	-28.40
7,391.0	0.40	210.00	7,212.7	-1,292.8	39.7	1,293.5	0.63	0.22	165.16
7,485.0	0.70	121.80	7,306.7	-1,293.4	40.0	1,294.0	0.85	0.32	-93.83
7,578.0	1.30	121.80	7,399.7	-1,294.3	41.4	1,294.9	0.65	0.65	0.00
7,672.0	1.50	135.60	7,493.7	-1,295.7	43.1	1,296.4	0.42	0.21	14.68
7,766.0	1.30	156.00	7,587.7	-1,297.6	44.4	1,298.3	0.57	-0.21	21.70
7,859.0	1.70	194.50	7,680.6	-1,299.9	44.5	1,300.6	1.14	0.43	41.40
7,953.0	2.80	222.80	7,774.6	-1,302.9	42.6	1,303.6	1.63	1.17	30.11
8,046.0	2.50	172.60	7,867.5	-1,306.6	41.3	1,307.2	2.43	-0.32	-53.98
8,140.0	3.10	156.70	7,961.4	-1,311.0	42.6	1,311.7	1.04	0.64	-16.91
8,233.0	4.00	145.00	8,054.2	-1,315.9	45.5	1,316.7	1.24	0.97	-12.58
8,327.0	5.00	152.90	8,147.9	-1,322.3	49.2	1,323.2	1.25	1.06	8.40
8,420.0	4.20	155.00	8,240.6	-1,329.0	52.5	1,330.0	0.88	-0.86	2.26
8,514.0	3.30	159.90	8,334.4	-1,334.6	54.9	1,335.7	1.02	-0.96	5.21
8,608.0	2.90	163.10	8,428.3	-1,339.4	56.5	1,340.6	0.46	-0.43	3.40
8,655.0	2.60	161.00	8,475.2	-1,341.6	57.2	1,342.7	0.67	-0.64	-4.47
8,695.8	2.60	161.00	8,516.0	-1,343.3	57.8	1,344.5	0.00	0.00	0.00
HARDLINE 146'N OF BHL									
8,701.0	2.60	161.00	8,521.2	-1,343.5	57.9	1,344.7	0.00	0.00	0.00

Checked By: _____ Approved By: _____ Date: _____