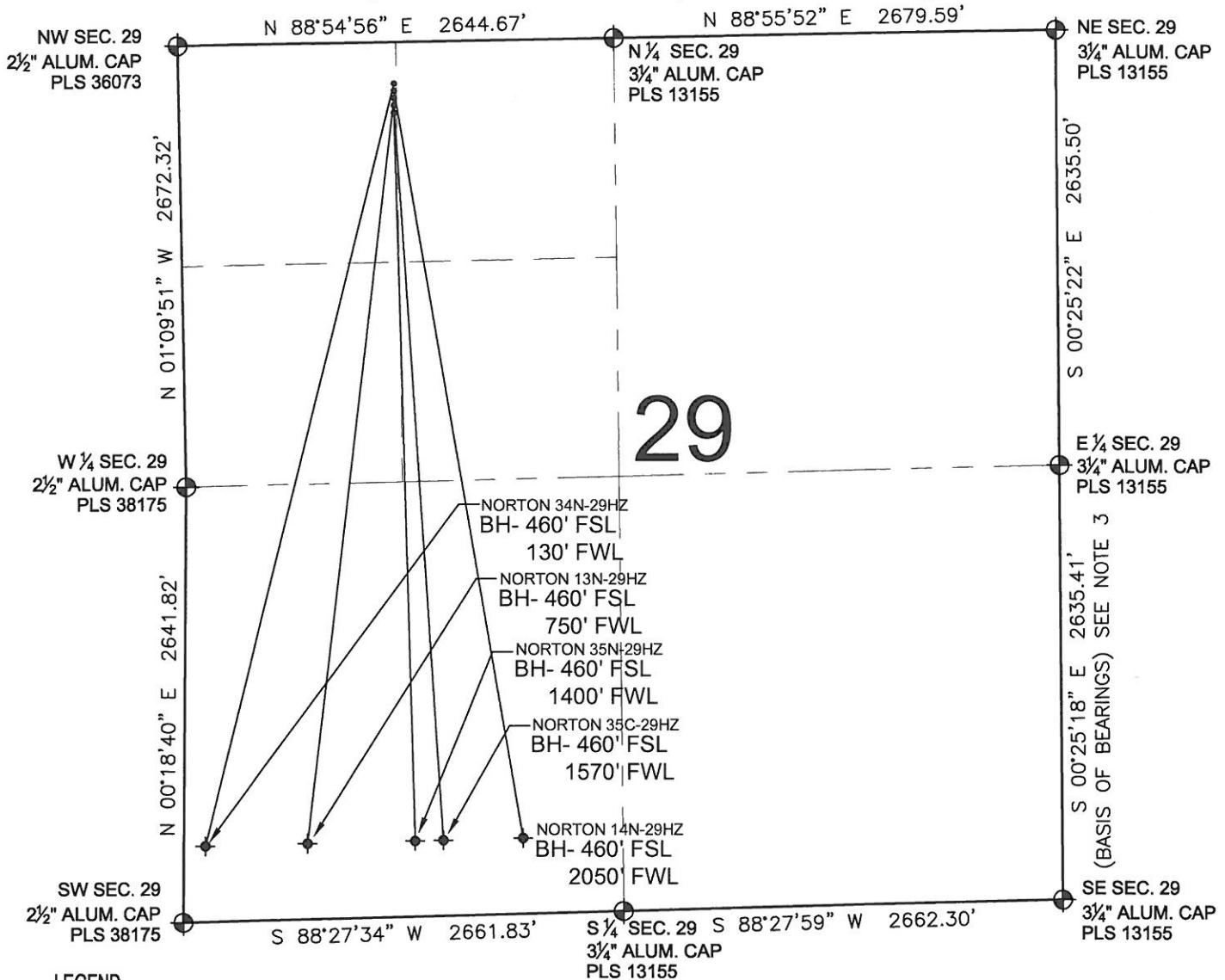


# PAD DRAWING: NORTON 5 PAD

SECTION 29, TOWNSHIP 3 NORTH, RANGE 66 WEST, 6TH P.M.



## LEGEND

- = EXISTING MONUMENT   
 = BOTTOM HOLE   
 BH= BOTTOM HOLE  
 = PROPOSED WELL   
 = EXISTING WELL

## NOTES:

- THIS FIELD SURVEY CONFORMS TO THE MINIMUM STANDARDS SET BY THE C.O.G.C.C., RULE NO. 215
- HORIZONTAL POSITIONS AND ORTHOMETRIC ELEVATIONS SHOWN AT THE WELL HEAD, ARE BASED ON GPS-RTK POSITIONS DERIVED FROM MINIMUM 2-HOUR STATIC OBSERVATIONS CORRECTED BY THE NATIONAL GEODETIC SURVEY ONLINE POSITIONING USER SERVICE, O.P.U.S. DATUM: HORIZONTAL = NAD83/2007, VERTICAL = NAVD88
- THE BASIS OF BEARINGS ARE STATE PLANE COORDINATE SYSTEM GRID BEARINGS SHOWN HEREON BETWEEN THE DESCRIBED THE MONUMENTS SHOWN HEREON.
- GRID DISTANCES ARE SHOWN, AS MEASURED IN THE FIELD, WITH TIES TO WELLS MEASURED PERPENDICULAR TO SECTION LINES.

## NOTES:

- NORTON 35N-29HZ TO BE AT 370' FNL, 1307' FWL.  
 BOTTOM HOLE AT 460' FSL & 1400' FWL.  
 NORTON 35C-29HZ TO BE AT 340' FNL, 1307' FWL.  
 BOTTOM HOLE AT 460' FSL & 1570' FWL.  
 NORTON 13N-29HZ TO BE AT 310' FNL, 1307' FWL.  
 BOTTOM HOLE AT 460' FSL & 750' FWL.  
 NORTON 14N-29HZ TO BE AT 280' FNL, 1307' FWL.  
 BOTTOM HOLE AT 460' FSL & 2050' FWL.  
 NORTON 34N-29HZ TO BE AT 250' FNL, 1307' FWL.  
 BOTTOM HOLE AT 460' FSL & 130' FWL.

PREPARED BY:



KERR-MCGEE OIL & GAS ONSHORE LP

FIELD DATE: 10-14-11	PAD NAME: NORTON 5 PAD
DRAWING DATE: 11-10-11	SURFACE LOCATION: WELD COUNTY, COLORADO
BY: SMF	NW 1/4 NW 1/4, SEC. 29, T3N, R66W, 6TH P.M.

