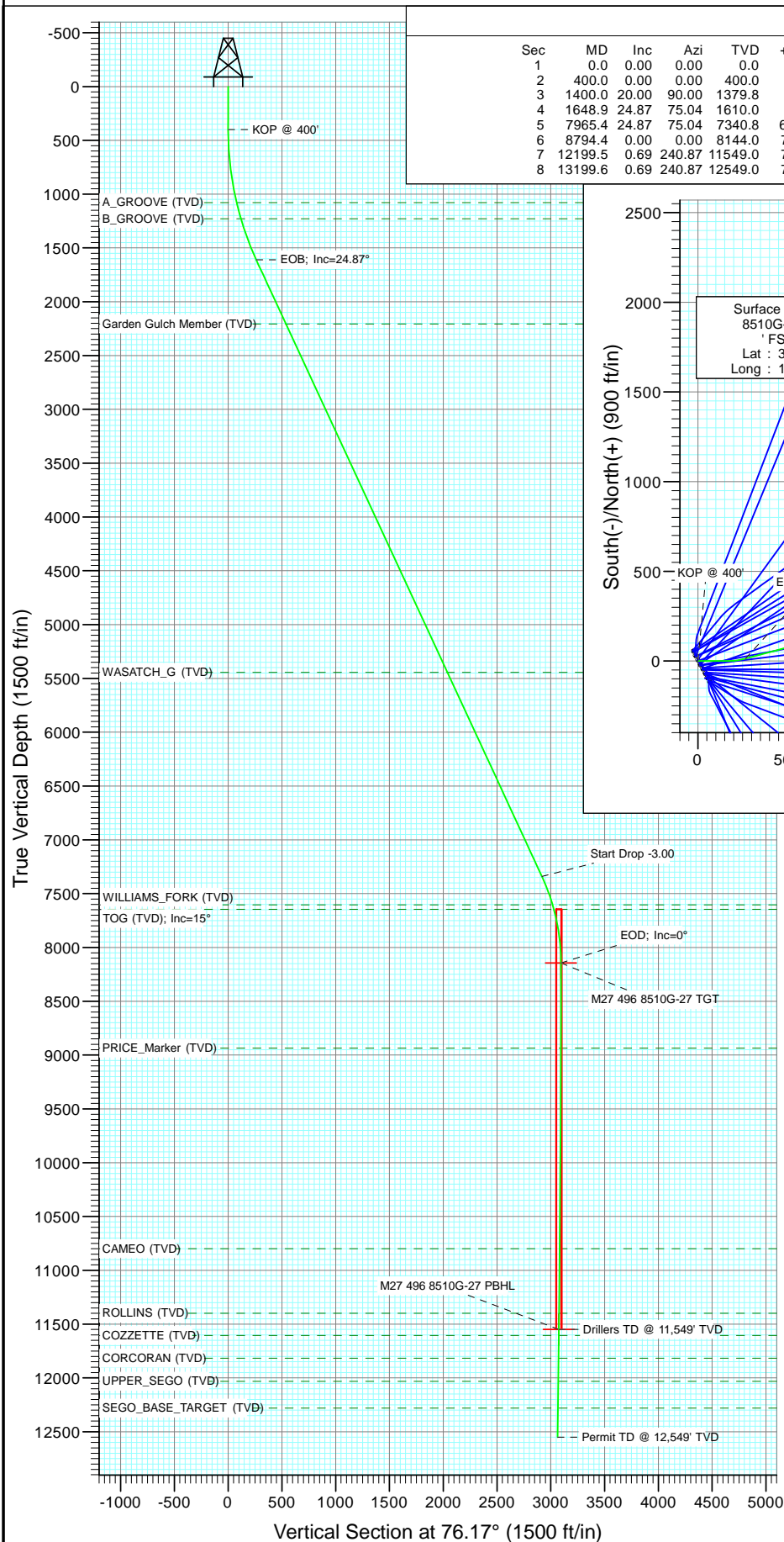


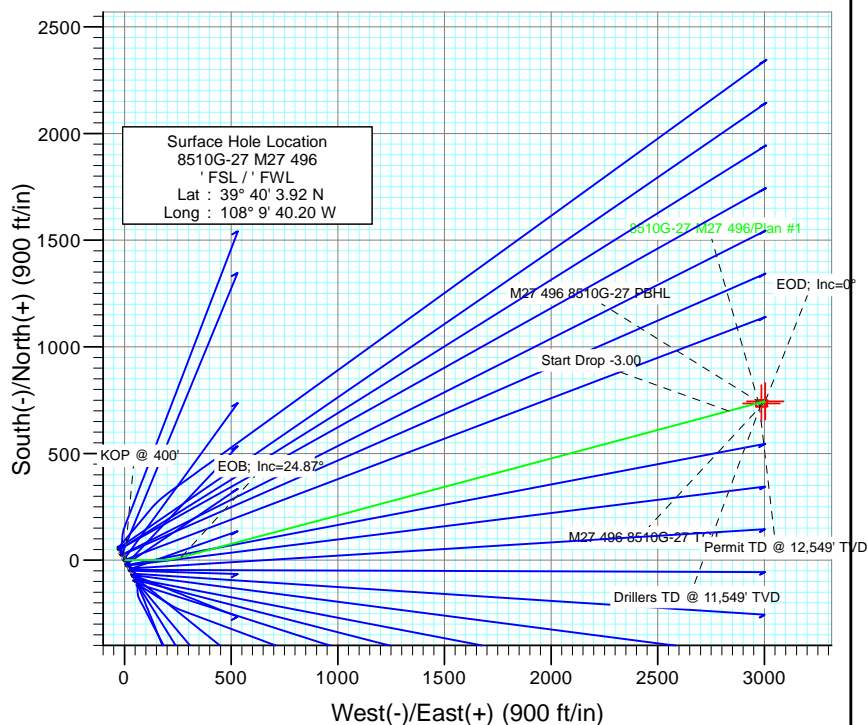


Project: Story Gulch
Site: S27-T4S-R96W (M27 496)
Well: 8510G-27 M27 496
Wellbore: DD
Design: Plan #1



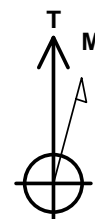
SECTION DETAILS

Sec	MD	Inc	Azi	TVD	+N/-S	+E/-W	Dleg	TFace	Vsect	Target
1	0.0	0.00	0.00	0.0	0.0	0.0	0.00	0.00	0.0	
2	400.0	0.00	0.00	400.0	0.0	0.0	0.00	0.00	0.0	
3	1400.0	20.00	90.00	1379.8	0.0	172.8	2.00	90.00	167.8	
4	1648.9	24.87	75.04	1610.0	13.5	266.0	3.00	-56.63	261.6	
5	7965.4	24.87	75.04	7340.8	699.1	2832.4	0.00	0.00	2917.4	
6	8794.4	0.00	0.00	8144.0	744.8	3003.5	3.00	180.00	3094.5	M27 496 8510G-27 TGT
7	12199.5	0.69	240.87	11549.0	734.8	2985.5	0.02	240.87	3074.6	M27 496 8510G-27 PBHL
8	13199.6	0.69	240.87	12549.0	728.9	2974.9	0.00	0.00	3062.9	



FORMATION TOP DETAILS

TVDPath	MDPath	Formation
1079.0	1085.5	A_GROOVE (TVD)
1229.0	1241.0	B_GROOVE (TVD)
2206.0	2305.8	Garden Gulch Member (TVD)
5444.0	5874.8	WASATCH_G (TVD)
7604.0	8246.9	WILLIAMS_FORK (TVD)
7644.0	8288.5	TOG (TVD); Inc=15°
8935.0	9585.4	PRICE_Marker (TVD)
10799.0	11449.4	CAMEO (TVD)
11399.0	12049.5	ROLLINS (TVD)
11605.0	12255.5	COZZETTE (TVD)
11816.0	12466.5	CORCORAN (TVD)
12030.0	12680.5	UPPER_SEGO (TVD)
12280.0	12930.5	SEGO_BASE_TARGET (TVD)



Azimuths to True North
Magnetic North: 10.41°

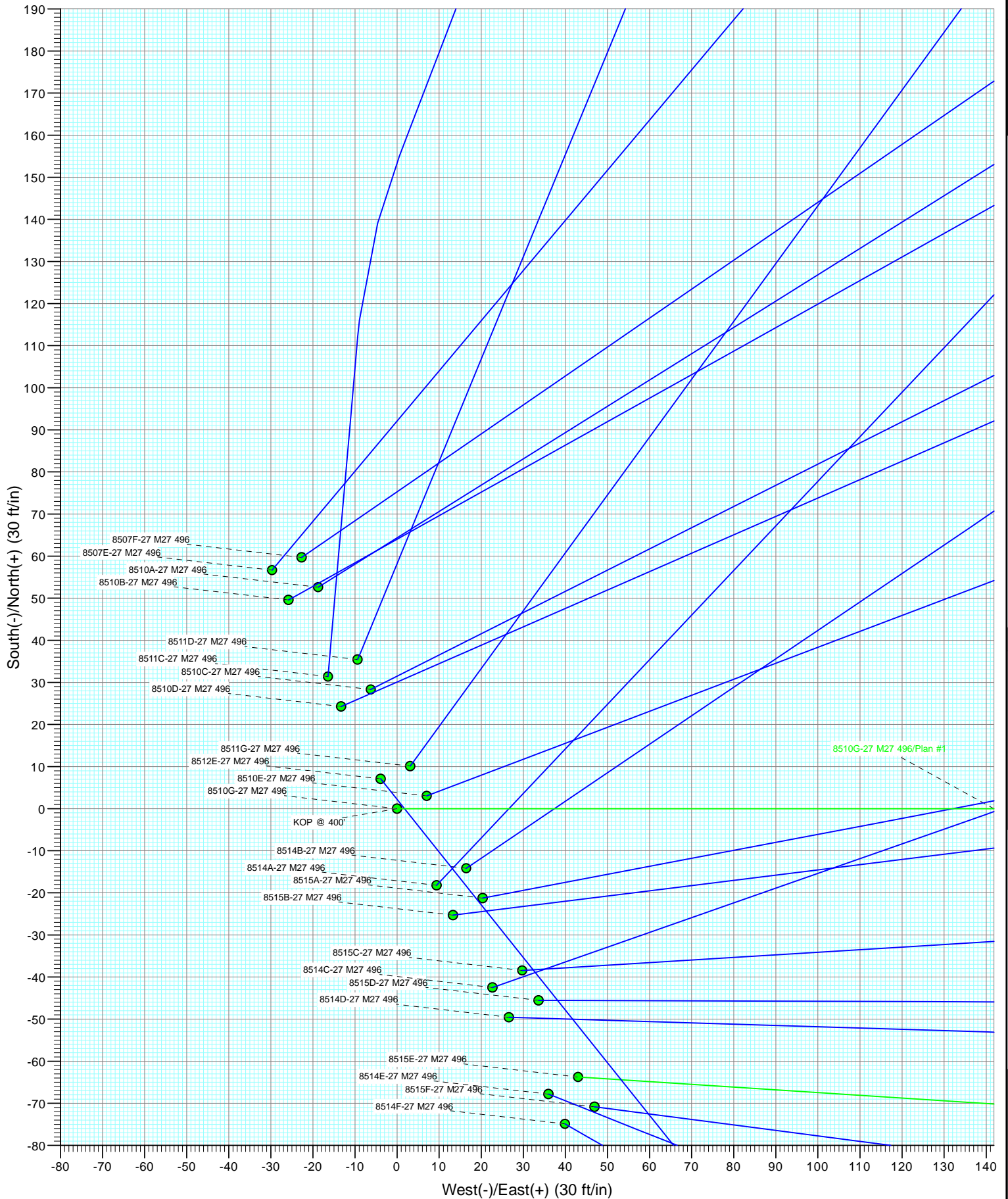
Magnetic Field
Strength: 52277.7snT
Dip Angle: 65.84°
Date: 9/21/2011
Model: IGRF2010

Plan #1
8510G-27 M27 496
11500; LR
KBE @ 8121.0ft (Original Well Elev)
GL @ 8099.0
North American Datum 1983
Well 8510G-27 M27 496, True North

Type	Target	Azimuth	Origin	Type	N/S	E/W	From	TVD
	M27 496 8510G-27 PBHL	76.17	Slot		0.0	0.0	0.0	
Name	TVD	+N/-S	+E/-W	Latitude	Longitude			
M27 496 8510G-27 TGT	8144.0	744.8	3003.5	39° 40' 11.28 N	108° 9' 1.79 W			
M27 496 8510G-27 PBHL	11549.0	734.8	2985.5	39° 40' 11.18 N	108° 9' 2.02 W			

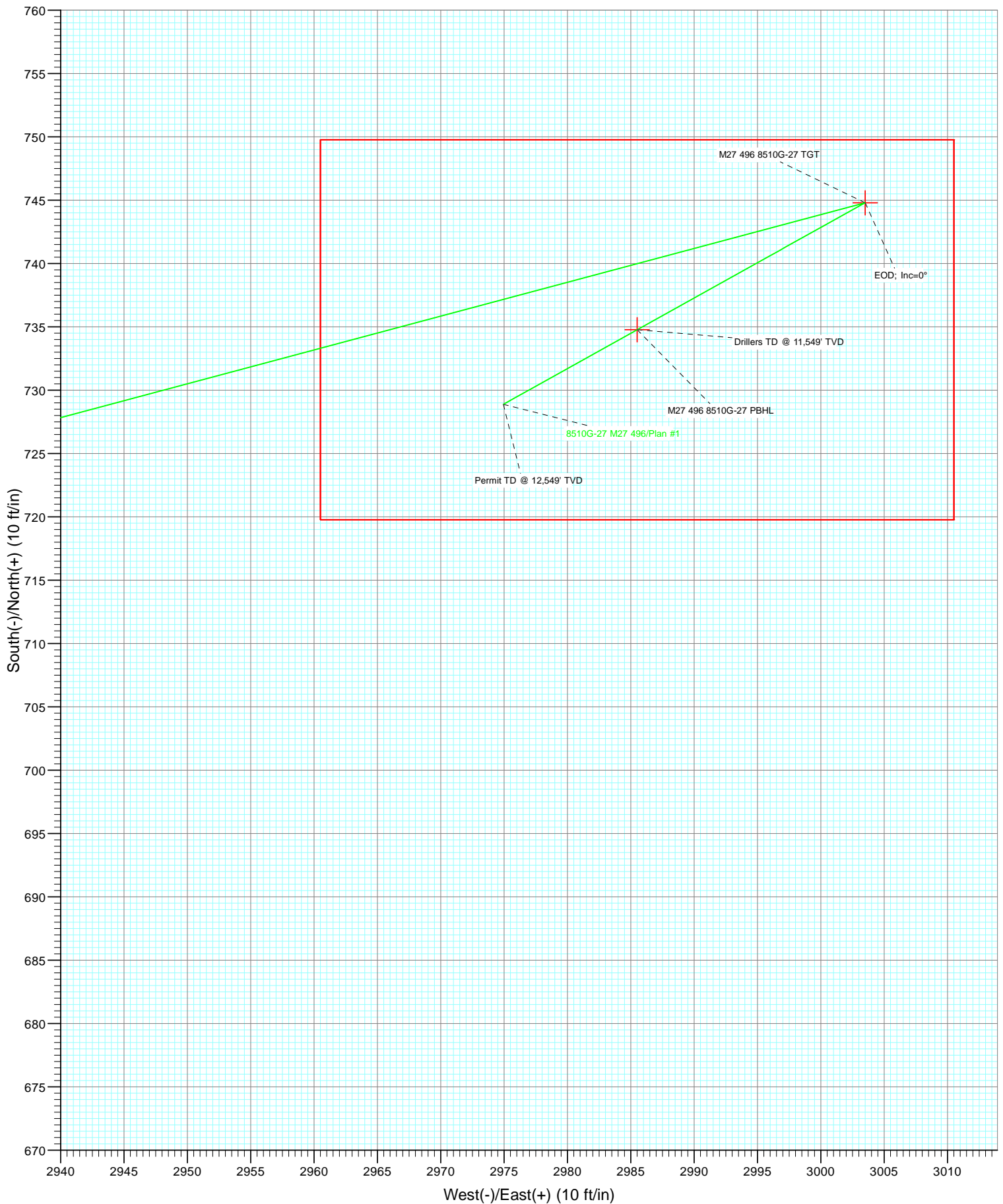


Project: Story Gulch
Site: S27-T4S-R96W (M27 496)
Well: 8510G-27 M27 496
Wellbore: DD
Design: Plan #1





Project: Story Gulch
Site: S27-T4S-R96W (M27 496)
Well: 8510G-27 M27 496
Wellbore: DD
Design: Plan #1



Planning Report

Database:	USA EDM 5000 Multi Users DB	Local Co-ordinate Reference:	Well 8510G-27 M27 496
Company:	EnCana Oil & Gas (USA) Inc	TVD Reference:	KBE @ 8121.0ft (Original Well Elev)
Project:	Story Gulch	MD Reference:	KBE @ 8121.0ft (Original Well Elev)
Site:	S27-T4S-R96W (M27 496)	North Reference:	True
Well:	8510G-27 M27 496	Survey Calculation Method:	Minimum Curvature
Wellbore:	DD		
Design:	Plan #1		

Project	Story Gulch		
Map System:	US State Plane 1983	System Datum:	Mean Sea Level
Geo Datum:	North American Datum 1983		
Map Zone:	Colorado Central Zone		

Site		S27-T4S-R96W (M27 496)			
Site Position:		Northing:	1,678,990.24 ft	Latitude:	39° 40' 3.01 N
From:	Lat/Long	Easting:	2,251,008.33 ft	Longitude:	108° 9' 39.57 W
Position Uncertainty:	0.0 ft	Slot Radius:	13.200 in	Grid Convergence:	-1.68 °

Well	8510G-27 M27 496					
Well Position	+N/-S	0.0 ft	Northing:	1,679,083.71 ft	Latitude:	39° 40' 3.92 N
	+E/-W	0.0 ft	Easting:	2,250,961.78 ft	Longitude:	108° 9' 40.20 W
Position Uncertainty		0.0 ft	Wellhead Elevation:	ft	Ground Level:	8,099.0 ft

Wellbore	DD				
Magnetics	Model Name	Sample Date	Declination (°)	Dip Angle (°)	Field Strength (nT)
	IGRF2010	9/21/2011	10.41	65.84	52,278

Design	Plan #1				
Audit Notes:					
Version:	Phase:	PLAN		Tie On Depth:	0.0
Vertical Section:	Depth From (TVD) (ft)	+N/-S (ft)	+E/-W (ft)	Direction (°)	
	0.0	0.0	0.0	76.17	

Plan Sections										
Measured Depth (ft)	Inclination (°)	Azimuth (°)	Vertical Depth (ft)	+N/-S (ft)	+E/-W (ft)	Dogleg Rate (°/100ft)	Build Rate (°/100ft)	Turn Rate (°/100ft)	TFO (°)	Target
0.0	0.00	0.00	0.0	0.0	0.0	0.00	0.00	0.00	0.00	
400.0	0.00	0.00	400.0	0.0	0.0	0.00	0.00	0.00	0.00	
1,400.0	20.00	90.00	1,379.8	0.0	172.8	2.00	2.00	0.00	90.00	
1,648.9	24.87	75.04	1,610.0	13.5	266.0	3.00	1.96	-6.01	-56.63	
7,965.4	24.87	75.04	7,340.8	699.1	2,832.4	0.00	0.00	0.00	0.00	
8,794.4	0.00	0.00	8,144.0	744.8	3,003.5	3.00	-3.00	0.00	180.00	M27 496 8510G-27 T
12,199.5	0.69	240.87	11,549.0	734.8	2,985.5	0.02	0.02	-3.50	240.87	M27 496 8510G-27 P
13,199.6	0.69	240.87	12,549.0	728.9	2,974.9	0.00	0.00	0.00	0.00	

Planning Report

Database:	USA EDM 5000 Multi Users DB	Local Co-ordinate Reference:	Well 8510G-27 M27 496
Company:	EnCana Oil & Gas (USA) Inc	TVD Reference:	KBE @ 8121.0ft (Original Well Elev)
Project:	Story Gulch	MD Reference:	KBE @ 8121.0ft (Original Well Elev)
Site:	S27-T4S-R96W (M27 496)	North Reference:	True
Well:	8510G-27 M27 496	Survey Calculation Method:	Minimum Curvature
Wellbore:	DD		
Design:	Plan #1		

Planned Survey

Measured Depth (ft)	Inclination (°)	Azimuth (°)	Vertical Depth (ft)	+N/-S (ft)	+E/-W (ft)	Vertical Section (ft)	Dogleg Rate (°/100ft)	Build Rate (°/100ft)	Comments / Formations
0.0	0.00	0.00	0.0	0.0	0.0	0.0	0.00	0.00	
100.0	0.00	0.00	100.0	0.0	0.0	0.0	0.00	0.00	
200.0	0.00	0.00	200.0	0.0	0.0	0.0	0.00	0.00	
300.0	0.00	0.00	300.0	0.0	0.0	0.0	0.00	0.00	
400.0	0.00	0.00	400.0	0.0	0.0	0.0	0.00	0.00	KOP @ 400'
500.0	2.00	90.00	500.0	0.0	1.7	1.7	2.00	2.00	
600.0	4.00	90.00	599.8	0.0	7.0	6.8	2.00	2.00	
700.0	6.00	90.00	699.5	0.0	15.7	15.2	2.00	2.00	
800.0	8.00	90.00	798.7	0.0	27.9	27.1	2.00	2.00	
900.0	10.00	90.00	897.5	0.0	43.5	42.3	2.00	2.00	
1,000.0	12.00	90.00	995.6	0.0	62.6	60.8	2.00	2.00	
1,085.5	13.71	90.00	1,079.0	0.0	81.6	79.3	2.00	2.00	A_GROOVE (TVD)
1,100.0	14.00	90.00	1,093.1	0.0	85.1	82.6	2.00	2.00	
1,200.0	16.00	90.00	1,189.6	0.0	111.0	107.8	2.00	2.00	
1,241.0	16.82	90.00	1,229.0	0.0	122.6	119.0	2.00	2.00	B_GROOVE (TVD)
1,300.0	18.00	90.00	1,285.3	0.0	140.2	136.1	2.00	2.00	
1,400.0	20.00	90.00	1,379.8	0.0	172.8	167.8	2.00	2.00	
1,500.0	21.79	83.24	1,473.2	2.2	208.3	202.8	3.00	1.79	
1,600.0	23.81	77.51	1,565.4	8.7	246.5	241.4	3.00	2.02	
1,648.9	24.87	75.04	1,610.0	13.5	266.0	261.6	3.00	2.16	EOB; Inc=24.87°
1,700.0	24.87	75.04	1,656.4	19.1	286.8	283.0	0.00	0.00	
1,800.0	24.87	75.04	1,747.1	29.9	327.4	325.1	0.00	0.00	
1,900.0	24.87	75.04	1,837.8	40.8	368.0	367.1	0.00	0.00	
2,000.0	24.87	75.04	1,928.5	51.6	408.7	409.2	0.00	0.00	
2,100.0	24.87	75.04	2,019.3	62.5	449.3	451.2	0.00	0.00	
2,200.0	24.87	75.04	2,110.0	73.3	489.9	493.3	0.00	0.00	
2,300.0	24.87	75.04	2,200.7	84.2	530.6	535.3	0.00	0.00	
2,305.8	24.87	75.04	2,206.0	84.8	532.9	537.8	0.00	0.00	Garden Gulch Member (TVD)
2,400.0	24.87	75.04	2,291.4	95.0	571.2	577.4	0.00	0.00	
2,500.0	24.87	75.04	2,382.2	105.9	611.8	619.4	0.00	0.00	
2,600.0	24.87	75.04	2,472.9	116.8	652.5	661.5	0.00	0.00	
2,700.0	24.87	75.04	2,563.6	127.6	693.1	703.5	0.00	0.00	
2,800.0	24.87	75.04	2,654.4	138.5	733.7	745.5	0.00	0.00	
2,900.0	24.87	75.04	2,745.1	149.3	774.3	787.6	0.00	0.00	
3,000.0	24.87	75.04	2,835.8	160.2	815.0	829.6	0.00	0.00	
3,100.0	24.87	75.04	2,926.5	171.0	855.6	871.7	0.00	0.00	
3,200.0	24.87	75.04	3,017.3	181.9	896.2	913.7	0.00	0.00	
3,300.0	24.87	75.04	3,108.0	192.7	936.9	955.8	0.00	0.00	
3,400.0	24.87	75.04	3,198.7	203.6	977.5	997.8	0.00	0.00	
3,500.0	24.87	75.04	3,289.4	214.4	1,018.1	1,039.9	0.00	0.00	
3,600.0	24.87	75.04	3,380.2	225.3	1,058.7	1,081.9	0.00	0.00	
3,700.0	24.87	75.04	3,470.9	236.1	1,099.4	1,124.0	0.00	0.00	
3,800.0	24.87	75.04	3,561.6	247.0	1,140.0	1,166.0	0.00	0.00	
3,900.0	24.87	75.04	3,652.4	257.8	1,180.6	1,208.0	0.00	0.00	
4,000.0	24.87	75.04	3,743.1	268.7	1,221.3	1,250.1	0.00	0.00	
4,100.0	24.87	75.04	3,833.8	279.6	1,261.9	1,292.1	0.00	0.00	
4,200.0	24.87	75.04	3,924.5	290.4	1,302.5	1,334.2	0.00	0.00	
4,300.0	24.87	75.04	4,015.3	301.3	1,343.2	1,376.2	0.00	0.00	
4,400.0	24.87	75.04	4,106.0	312.1	1,383.8	1,418.3	0.00	0.00	
4,500.0	24.87	75.04	4,196.7	323.0	1,424.4	1,460.3	0.00	0.00	
4,600.0	24.87	75.04	4,287.5	333.8	1,465.0	1,502.4	0.00	0.00	
4,700.0	24.87	75.04	4,378.2	344.7	1,505.7	1,544.4	0.00	0.00	

Planning Report

Database:	USA EDM 5000 Multi Users DB	Local Co-ordinate Reference:	Well 8510G-27 M27 496
Company:	EnCana Oil & Gas (USA) Inc	TVD Reference:	KBE @ 8121.0ft (Original Well Elev)
Project:	Story Gulch	MD Reference:	KBE @ 8121.0ft (Original Well Elev)
Site:	S27-T4S-R96W (M27 496)	North Reference:	True
Well:	8510G-27 M27 496	Survey Calculation Method:	Minimum Curvature
Wellbore:	DD		
Design:	Plan #1		

Planned Survey									
Measured Depth (ft)	Inclination (°)	Azimuth (°)	Vertical Depth (ft)	+N/-S (ft)	+E/-W (ft)	Vertical Section (ft)	Dogleg Rate (°/100ft)	Build Rate (°/100ft)	Comments / Formations
4,800.0	24.87	75.04	4,468.9	355.5	1,546.3	1,586.5	0.00	0.00	
4,900.0	24.87	75.04	4,559.6	366.4	1,586.9	1,628.5	0.00	0.00	
5,000.0	24.87	75.04	4,650.4	377.2	1,627.6	1,670.6	0.00	0.00	
5,100.0	24.87	75.04	4,741.1	388.1	1,668.2	1,712.6	0.00	0.00	
5,200.0	24.87	75.04	4,831.8	398.9	1,708.8	1,754.6	0.00	0.00	
5,300.0	24.87	75.04	4,922.5	409.8	1,749.4	1,796.7	0.00	0.00	
5,400.0	24.87	75.04	5,013.3	420.7	1,790.1	1,838.7	0.00	0.00	
5,500.0	24.87	75.04	5,104.0	431.5	1,830.7	1,880.8	0.00	0.00	
5,600.0	24.87	75.04	5,194.7	442.4	1,871.3	1,922.8	0.00	0.00	
5,700.0	24.87	75.04	5,285.5	453.2	1,912.0	1,964.9	0.00	0.00	
5,800.0	24.87	75.04	5,376.2	464.1	1,952.6	2,006.9	0.00	0.00	
5,874.8	24.87	75.04	5,444.0	472.2	1,983.0	2,038.4	0.00	0.00	WASATCH_G (TVD)
5,900.0	24.87	75.04	5,466.9	474.9	1,993.2	2,049.0	0.00	0.00	
6,000.0	24.87	75.04	5,557.6	485.8	2,033.9	2,091.0	0.00	0.00	
6,100.0	24.87	75.04	5,648.4	496.6	2,074.5	2,133.1	0.00	0.00	
6,200.0	24.87	75.04	5,739.1	507.5	2,115.1	2,175.1	0.00	0.00	
6,300.0	24.87	75.04	5,829.8	518.3	2,155.7	2,217.2	0.00	0.00	
6,400.0	24.87	75.04	5,920.5	529.2	2,196.4	2,259.2	0.00	0.00	
6,500.0	24.87	75.04	6,011.3	540.0	2,237.0	2,301.2	0.00	0.00	
6,600.0	24.87	75.04	6,102.0	550.9	2,277.6	2,343.3	0.00	0.00	
6,700.0	24.87	75.04	6,192.7	561.7	2,318.3	2,385.3	0.00	0.00	
6,800.0	24.87	75.04	6,283.5	572.6	2,358.9	2,427.4	0.00	0.00	
6,900.0	24.87	75.04	6,374.2	583.5	2,399.5	2,469.4	0.00	0.00	
7,000.0	24.87	75.04	6,464.9	594.3	2,440.2	2,511.5	0.00	0.00	
7,100.0	24.87	75.04	6,555.6	605.2	2,480.8	2,553.5	0.00	0.00	
7,200.0	24.87	75.04	6,646.4	616.0	2,521.4	2,595.6	0.00	0.00	
7,300.0	24.87	75.04	6,737.1	626.9	2,562.0	2,637.6	0.00	0.00	
7,400.0	24.87	75.04	6,827.8	637.7	2,602.7	2,679.7	0.00	0.00	
7,500.0	24.87	75.04	6,918.5	648.6	2,643.3	2,721.7	0.00	0.00	
7,600.0	24.87	75.04	7,009.3	659.4	2,683.9	2,763.8	0.00	0.00	
7,700.0	24.87	75.04	7,100.0	670.3	2,724.6	2,805.8	0.00	0.00	
7,800.0	24.87	75.04	7,190.7	681.1	2,765.2	2,847.8	0.00	0.00	
7,900.0	24.87	75.04	7,281.5	692.0	2,805.8	2,889.9	0.00	0.00	
7,965.4	24.87	75.04	7,340.8	699.1	2,832.4	2,917.4	0.00	0.00	Start Drop -3.00
8,000.0	23.83	75.04	7,372.3	702.8	2,846.2	2,931.7	3.00	-3.00	
8,100.0	20.83	75.04	7,464.8	712.6	2,882.9	2,969.6	3.00	-3.00	
8,200.0	17.83	75.04	7,559.1	721.1	2,914.9	3,002.7	3.00	-3.00	
8,246.9	16.42	75.04	7,604.0	724.7	2,928.2	3,016.5	3.00	-3.00	WILLIAMS_FORK (TVD)
8,288.5	15.18	75.04	7,644.0	727.6	2,939.1	3,027.9	3.00	-3.00	TOG (TVD); Inc=15°
8,300.0	14.83	75.04	7,655.1	728.4	2,942.0	3,030.8	3.00	-3.00	
8,400.0	11.83	75.04	7,752.4	734.3	2,964.3	3,053.9	3.00	-3.00	
8,500.0	8.83	75.04	7,850.8	739.0	2,981.6	3,071.8	3.00	-3.00	
8,600.0	5.83	75.04	7,949.9	742.2	2,993.9	3,084.6	3.00	-3.00	
8,700.0	2.83	75.04	8,049.6	744.2	3,001.2	3,092.1	3.00	-3.00	
8,794.4	0.00	0.00	8,144.0	744.8	3,003.5	3,094.5	3.00	-3.00	EOD; Inc=0° - M27 496 8510G-27 TGT
8,800.0	0.00	240.87	8,149.6	744.8	3,003.5	3,094.5	0.02	0.02	
8,900.0	0.02	240.87	8,249.6	744.8	3,003.5	3,094.4	0.02	0.02	
9,000.0	0.04	240.87	8,349.6	744.8	3,003.4	3,094.4	0.02	0.02	
9,100.0	0.06	240.87	8,449.6	744.7	3,003.4	3,094.3	0.02	0.02	
9,200.0	0.08	240.87	8,549.6	744.7	3,003.2	3,094.2	0.02	0.02	
9,300.0	0.10	240.87	8,649.6	744.6	3,003.1	3,094.0	0.02	0.02	
9,400.0	0.12	240.87	8,749.6	744.5	3,002.9	3,093.8	0.02	0.02	

Planning Report

Database:	USA EDM 5000 Multi Users DB	Local Co-ordinate Reference:	Well 8510G-27 M27 496
Company:	EnCana Oil & Gas (USA) Inc	TVD Reference:	KBE @ 8121.0ft (Original Well Elev)
Project:	Story Gulch	MD Reference:	KBE @ 8121.0ft (Original Well Elev)
Site:	S27-T4S-R96W (M27 496)	North Reference:	True
Well:	8510G-27 M27 496	Survey Calculation Method:	Minimum Curvature
Wellbore:	DD		
Design:	Plan #1		

Planned Survey									
Measured Depth (ft)	Inclination (°)	Azimuth (°)	Vertical Depth (ft)	+N/-S (ft)	+E/-W (ft)	Vertical Section (ft)	Dogleg Rate (°/100ft)	Build Rate (°/100ft)	Comments / Formations
9,500.0	0.14	240.87	8,849.6	744.4	3,002.7	3,093.6	0.02	0.02	
9,585.4	0.16	240.87	8,935.0	744.3	3,002.5	3,093.4	0.02	0.02	PRICE_Marker (TVD)
9,600.0	0.16	240.87	8,949.6	744.2	3,002.5	3,093.4	0.02	0.02	
9,700.0	0.18	240.87	9,049.6	744.1	3,002.2	3,093.1	0.02	0.02	
9,800.0	0.20	240.87	9,149.6	743.9	3,001.9	3,092.7	0.02	0.02	
9,900.0	0.23	240.87	9,249.6	743.7	3,001.6	3,092.4	0.02	0.02	
10,000.0	0.25	240.87	9,349.6	743.5	3,001.2	3,092.0	0.02	0.02	
10,100.0	0.27	240.87	9,449.6	743.3	3,000.9	3,091.5	0.02	0.02	
10,200.0	0.29	240.87	9,549.6	743.1	3,000.4	3,091.1	0.02	0.02	
10,300.0	0.31	240.87	9,649.6	742.8	3,000.0	3,090.6	0.02	0.02	
10,400.0	0.33	240.87	9,749.6	742.6	2,999.5	3,090.0	0.02	0.02	
10,500.0	0.35	240.87	9,849.6	742.3	2,999.0	3,089.5	0.02	0.02	
10,600.0	0.37	240.87	9,949.6	742.0	2,998.4	3,088.9	0.02	0.02	
10,700.0	0.39	240.87	10,049.6	741.7	2,997.9	3,088.2	0.02	0.02	
10,800.0	0.41	240.87	10,149.6	741.3	2,997.3	3,087.6	0.02	0.02	
10,900.0	0.43	240.87	10,249.6	741.0	2,996.6	3,086.9	0.02	0.02	
11,000.0	0.45	240.87	10,349.6	740.6	2,996.0	3,086.1	0.02	0.02	
11,100.0	0.47	240.87	10,449.6	740.2	2,995.3	3,085.4	0.02	0.02	
11,200.0	0.49	240.87	10,549.6	739.8	2,994.5	3,084.5	0.02	0.02	
11,300.0	0.51	240.87	10,649.6	739.4	2,993.8	3,083.7	0.02	0.02	
11,400.0	0.53	240.87	10,749.6	738.9	2,993.0	3,082.8	0.02	0.02	
11,449.4	0.54	240.87	10,799.0	738.7	2,992.6	3,082.4	0.02	0.02	CAMEO (TVD)
11,500.0	0.55	240.87	10,849.6	738.5	2,992.1	3,081.9	0.02	0.02	
11,600.0	0.57	240.87	10,949.6	738.0	2,991.3	3,081.0	0.02	0.02	
11,700.0	0.59	240.87	11,049.5	737.5	2,990.4	3,080.0	0.02	0.02	
11,800.0	0.61	240.87	11,149.5	737.0	2,989.5	3,079.0	0.02	0.02	
11,900.0	0.63	240.87	11,249.5	736.5	2,988.5	3,077.9	0.02	0.02	
12,000.0	0.65	240.87	11,349.5	735.9	2,987.6	3,076.9	0.02	0.02	
12,049.5	0.66	240.87	11,399.0	735.6	2,987.1	3,076.3	0.02	0.02	ROLLINS (TVD)
12,100.0	0.67	240.87	11,449.5	735.4	2,986.5	3,075.7	0.02	0.02	
12,199.5	0.69	240.87	11,549.0	734.8	2,985.5	3,074.6	0.02	0.02	Drillers TD @ 11,549' TVD - M27 496 8510G-27
12,200.0	0.69	240.87	11,549.5	734.8	2,985.5	3,074.6	0.00	0.00	
12,255.5	0.69	240.87	11,605.0	734.4	2,984.9	3,073.9	0.00	0.00	COZZETTE (TVD)
12,300.0	0.69	240.87	11,649.5	734.2	2,984.4	3,073.4	0.00	0.00	
12,400.0	0.69	240.87	11,749.5	733.6	2,983.4	3,072.3	0.00	0.00	
12,466.5	0.69	240.87	11,816.0	733.2	2,982.7	3,071.5	0.00	0.00	CORCORAN (TVD)
12,500.0	0.69	240.87	11,849.5	733.0	2,982.3	3,071.1	0.00	0.00	
12,600.0	0.69	240.87	11,949.5	732.4	2,981.3	3,069.9	0.00	0.00	
12,680.5	0.69	240.87	12,030.0	731.9	2,980.4	3,069.0	0.00	0.00	UPPER_SEGO (TVD)
12,700.0	0.69	240.87	12,049.5	731.8	2,980.2	3,068.8	0.00	0.00	
12,800.0	0.69	240.87	12,149.5	731.2	2,979.2	3,067.6	0.00	0.00	
12,900.0	0.69	240.87	12,249.5	730.7	2,978.1	3,066.4	0.00	0.00	
12,930.5	0.69	240.87	12,280.0	730.5	2,977.8	3,066.1	0.00	0.00	SEGO_BASE_TARGET (TVD)
13,000.0	0.69	240.87	12,349.5	730.1	2,977.1	3,065.3	0.00	0.00	
13,100.0	0.69	240.87	12,449.5	729.5	2,976.0	3,064.1	0.00	0.00	
13,199.6	0.69	240.87	12,549.0	728.9	2,974.9	3,062.9	0.00	0.00	Permit TD @ 12,549' TVD

Planning Report

Database:	USA EDM 5000 Multi Users DB	Local Co-ordinate Reference:	Well 8510G-27 M27 496
Company:	EnCana Oil & Gas (USA) Inc	TVD Reference:	KBE @ 8121.0ft (Original Well Elev)
Project:	Story Gulch	MD Reference:	KBE @ 8121.0ft (Original Well Elev)
Site:	S27-T4S-R96W (M27 496)	North Reference:	True
Well:	8510G-27 M27 496	Survey Calculation Method:	Minimum Curvature
Wellbore:	DD		
Design:	Plan #1		

Targets									
Target Name									
- hit/miss target	Dip Angle	Dip Dir.	TVD	+N/-S	+E/-W	Northing	Easting	Latitude	Longitude
- Shape	(°)	(°)	(ft)	(ft)	(ft)	(ft)	(ft)		
M27 496 8510G-27 PBI-	0.00	0.00	11,549.0	734.8	2,985.5	1,679,730.73	2,253,967.53	39° 40' 11.18 N	108° 9' 2.02 W
- plan hits target center									
- Rectangle (sides W30.0 H50.0 D0.0)									
M27 496 8510G-27 TGT	0.00	0.00	8,144.0	744.8	3,003.5	1,679,740.22	2,253,985.80	39° 40' 11.28 N	108° 9' 1.79 W
- plan hits target center									
- Point									

Formations						
Measured Depth	Vertical Depth	Name	Lithology	Dip	Dip Direction	
(ft)	(ft)			(°)	(°)	
1,085.5	1,079.0	A_GROOVE (TVD)				
1,241.0	1,229.0	B_GROOVE (TVD)				
2,305.8	2,206.0	Garden Gulch Member (TVD)				
5,874.8	5,444.0	WASATCH_G (TVD)				
8,246.9	7,604.0	WILLIAMS_FORK (TVD)				
8,288.5	7,644.0	TOG (TVD); Inc=15°				
9,585.4	8,935.0	PRICE_Marker (TVD)				
11,449.4	10,799.0	CAMEO (TVD)				
12,049.5	11,399.0	ROLLINS (TVD)				
12,255.5	11,605.0	COZZETTE (TVD)				
12,466.5	11,816.0	CORCORAN (TVD)				
12,680.5	12,030.0	UPPER_SEGO (TVD)				
12,930.5	12,280.0	SEGO_BASE_TARGET (TVD)				

Plan Annotations				
Measured Depth	Vertical Depth	Local Coordinates		
(ft)	(ft)	+N/-S	+E/-W	Comment
(ft)	(ft)	(ft)	(ft)	
400.0	400.0	0.0	0.0	KOP @ 400'
1,648.9	1,610.0	0.0	172.8	EOB; Inc=24.87°
7,965.4	7,340.8	13.5	266.0	Start Drop -3.00
8,794.4	8,144.0	699.1	2,832.4	EOD; Inc=0°
12,199.5	11,549.0	744.8	3,003.5	Drillers TD @ 11,549' TVD
13,199.6	12,549.0	734.8	2,985.5	Permit TD @ 12,549' TVD