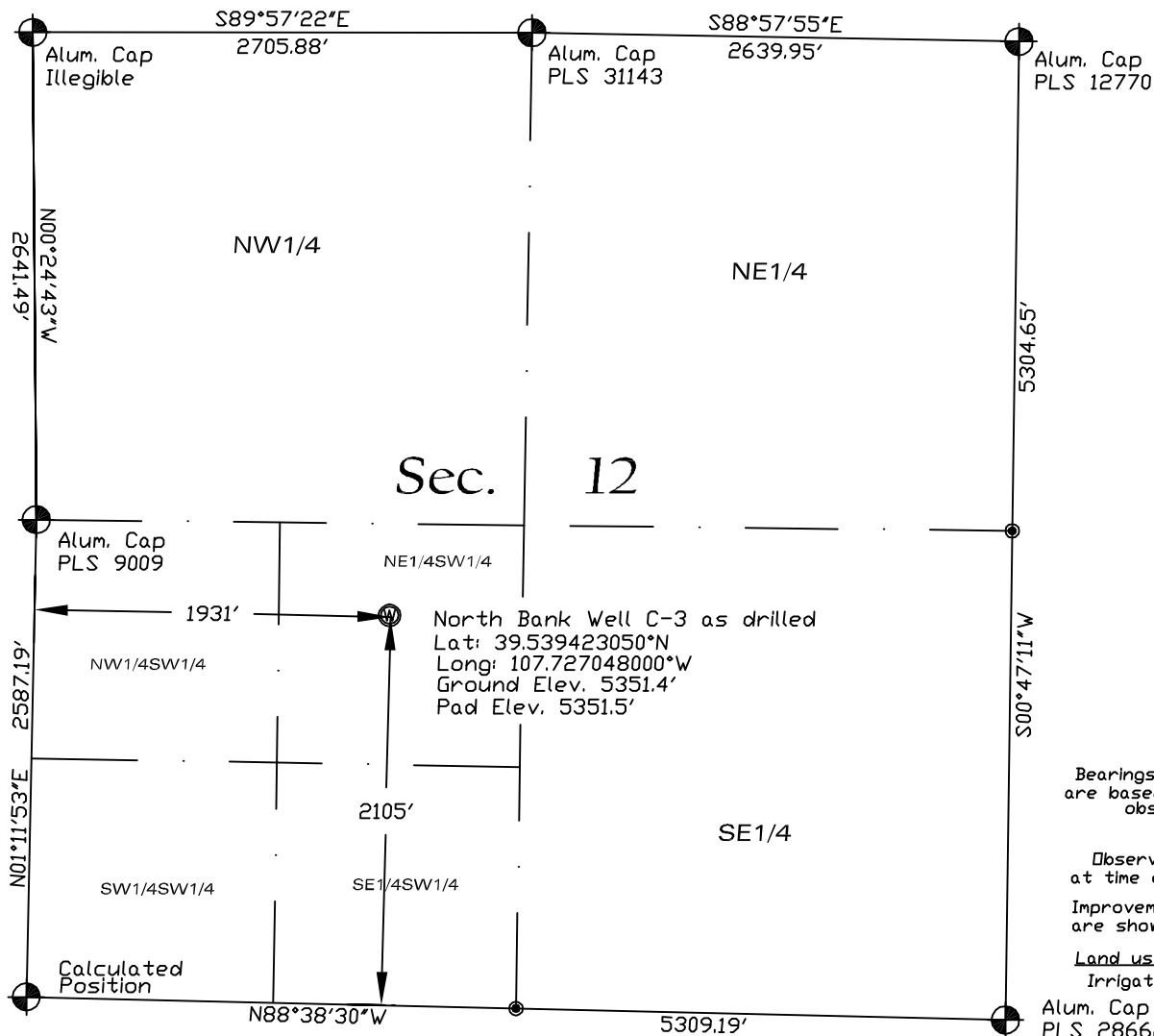
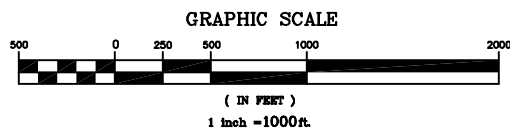


Antero Resources Corporation
North Bank Well C-3 As Drilled

situated in
Sec. 12, T. 6 S., R. 93 W. of the 6th P.M.
County of Garfield, State of Colorado



Bearings shown hereon
are based upon RTK GPS
observations.

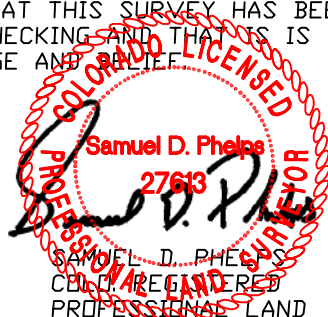
Observed PDDP 1.3
at time of well staking
Improvements within 200'
are shown on sheet 2

Land use:
Irrigated Rangeland

THIS WELL LOCATION PLAT HAS BEEN PREPARED FOR ANTERO RESOURCES CORP. TO LOCATE THE NORTH BANK C-3 WELL BEING 1,931 FEET FROM THE WEST LINE AND 2,105 FEET FROM THE SOUTH LINE IN THE NE1/4SW1/4 SECTION 12, TOWNSHIP 6 SOUTH, RANGE 93 WEST OF THE 6TH P.M. COUNTY OF GARFIELD, STATE OF COLORADO.

SURVEYORS CERTIFICATE

I, THE UNDERSIGNED, A LICENSED PROFESSIONAL LAND SURVEYOR IN THE STATE OF COLORADO, DO HEREBY CERTIFY THAT THIS SURVEY HAS BEEN MADE UNDER MY DIRECT SUPERVISION AND CHECKING AND THAT IT IS TRUE AND CORRECT TO THE BEST OF MY KNOWLEDGE AND BELIEF.



Legend

- Field Surveyed Section Corner Locations
- ⊙ Field Surveyed Well Location
- ⊙ Section Corner Location Based on GLD or Calculated Information
- Calculated Bottom Hole Location

Reference Notes

- 1) T6S, R93W 6th PM GLD Plat
- 2) USGS Quad Map: Rifle, CO.
- 3) Elevations Based on NAVD88
- 4) Lat/Long Values are NAD83
- 5) All Top and Bottom Locations are measured 90° from Section Lines.

SurvCo, Inc.

RTK GPS and Conventional Land Surveying Services

826-1/2 Grand Avenue
Post Office Box 2782
Glenwood Springs, CO. 81602-2782
Phone: (970) 945-5945 Fax: (970) 945-5946
Email: survco@gmail.com

Surveyed: 30/July/2008	Scale: 1 inch = 1000 feet
Drafted: 31/July/2008	dwg: North Bank C3 Plat 1 as drilled
Approved:	Sheet: 1 of 1

SAMUEL D. PHELPS
REGISTERED
PROFESSIONAL LAND
SURVEYOR NO. 27613
DATE OF CERTIFICATION
31/July/2008

Plat No. 1
"Location Plat"