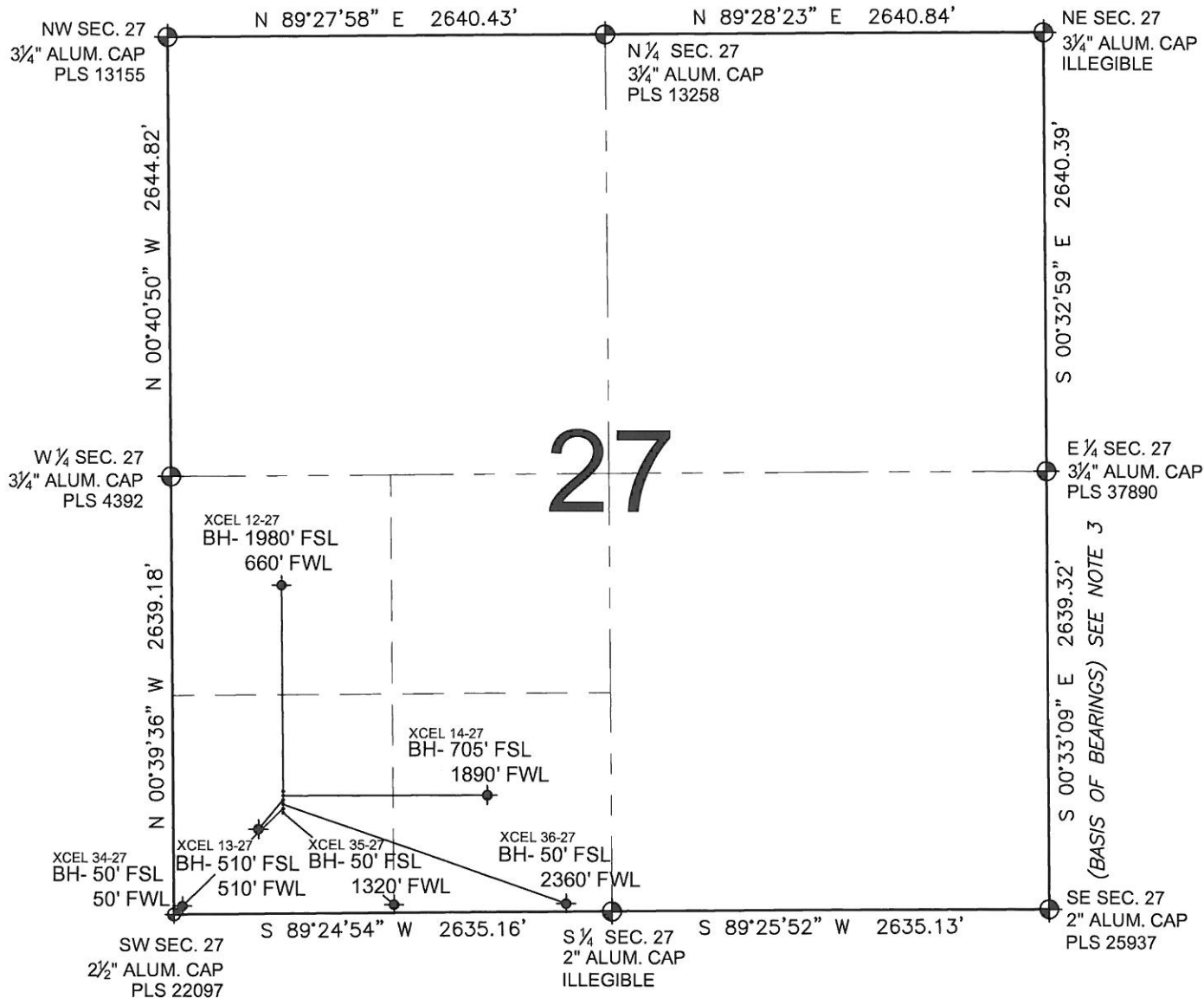


PAD DRAWING: XCEL 6 PAD

SECTION 27, TOWNSHIP 1 NORTH, RANGE 67 WEST, 6TH P.M.



LEGEND

- = EXISTING MONUMENT
 = BOTTOM HOLE
 BH= BOTTOM HOLE
 = PROPOSED WELL
 = EXISTING WELL

NOTES:

- THIS FIELD SURVEY CONFORMS TO THE MINIMUM STANDARDS SET BY THE C.O.G.C.C., RULE NO. 215
- HORIZONTAL POSITIONS AND ORTHOMETRIC ELEVATIONS SHOWN AT THE WELL HEAD, ARE BASED ON GPS-RTK POSITIONS DERIVED FROM MINIMUM 2-HOUR STATIC OBSERVATIONS CORRECTED BY THE NATIONAL GEODETIC SURVEY ONLINE POSITIONING USER SERVICE, O.P.U.S. DATUM: HORIZONTAL = NAD83/2007, VERTICAL = NAVD88
- THE BASIS OF BEARINGS ARE STATE PLANE COORDINATE SYSTEM GRID BEARINGS SHOWN HEREON BETWEEN THE DESCRIBED THE MONUMENTS SHOWN HEREON.
- GRID DISTANCES ARE SHOWN, AS MEASURED IN THE FIELD, WITH TIES TO WELLS MEASURED PERPENDICULAR TO SECTION LINES.

NOTES:

- XCEL 12-27 TO BE AT 708' FSL, 660' FWL.
 BOTTOM HOLE AT 1980' FSL & 660' FWL.
 XCEL 14-27 TO BE AT 692' FSL, 660' FWL.
 BOTTOM HOLE AT 705' FSL & 1890' FWL.
 XCEL 13-27 TO BE AT 676' FSL, 660' FWL.
 BOTTOM HOLE AT 510' FSL & 510' FWL.
 XCEL 36-27 TO BE AT 660' FSL, 660' FWL.
 BOTTOM HOLE AT 50' FSL & 2360' FWL.
 XCEL 34-27 TO BE AT 644' FSL, 660' FWL.
 BOTTOM HOLE AT 50' FSL & 50' FWL.
 XCEL 35-27 TO BE AT 628' FSL, 660' FWL.
 BOTTOM HOLE AT 50' FSL & 1320' FWL.

PREPARED BY:

PFS

Petroleum Field Services, LLC
1801 W. 13th Ave.
Denver, CO 80204



KERR-MCGEE OIL & GAS ONSHORE LP

FIELD DATE:
06-29-11

DRAWING DATE:
07-27-11

BY:
EFW

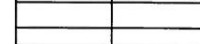
PAD NAME:
XCEL 6 PAD

SURFACE LOCATION:

WELD COUNTY, COLORADO
SW 1/4 SW 1/4, SEC. 27, T1N, R67W



0 500 1000



SCALE: 1"=1000'