

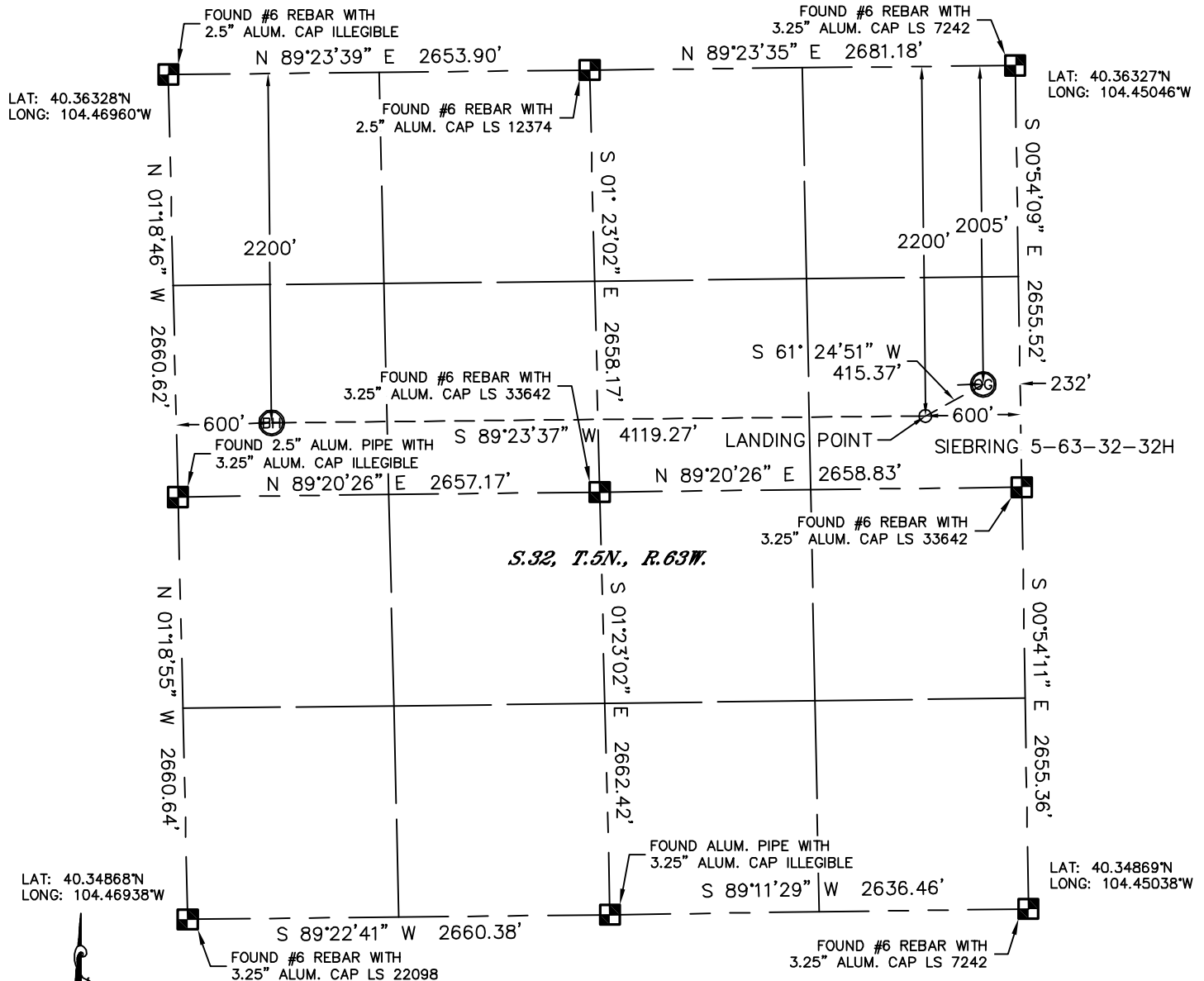


Lat40°, Inc. 1635 Foxtrail Drive, Suite 325 Loveland, CO 970-776-3321

WELL LOCATION CERTIFICATE

THIS MAP DOES NOT REPRESENT A BOUNDARY SURVEY

SECTION: 32
TOWNSHIP: 5N
RANGE: 63W



In accordance with a request from Glenn Berglund with BILL BARRETT CORPORATION Lat40°, Inc. has determined the surface location of the SIEBRING 5-63-32-32H to be 2005' from the NORTH line and 232' from the EAST line and the bottom hole to be 2200' from the NORTH line and 600' from the WEST line as measured at right angles from the section lines of Section 32, Township 5 North, Range 63 West of the Sixth Principal Meridian, County of Weld, State of Colorado.

I hereby state that this Well Location Certificate was prepared by me, or under my direct supervision, that the fieldwork was completed on 10/25/11, for and on behalf of BILL BARRETT CORPORATION. That this is not a Land Survey Plat or an Improvement Survey Plat, and that it is not to be relied upon for establishment of fence, building, or other future improvement lines.

NOTE:

- 1) Bearings shown are Grid Bearings of the Colorado State Plane Coordinate System, North Zone, North American Datum 1983/2007. The lineal dimensions as contained herein are based upon the "U.S. Survey Foot."
- 2) Ground elevations are based on an observed GPS elevation (NAVD 1988 DATUM).
- 3) IMPROVEMENTS: See LOCATION DRAWING for all visible improvements within 400' of disturbed area.
- 4) SURFACE USE: CROP LAND
- 5) INSTRUMENT OPERATOR: ADAM KELLY

SURFACE LOCATION

LAT: 40.35776°N (40°21'27.9"N)
LONG: 104.45126°W (104°27'04.5"W)
PDOP: 1.5
ELEV: 4569'
1/4, 1/4: SE1/4NE1/4
NEAREST PROPERTY LINE: 232' E

BOTTOM HOLE

LAT: 40.35724°N (40°21'26.1"N)
LONG: 104.46735°W (104°28'02.5"W)

LANDING POINT

LAT: 40.35723°N (40°21'26.0"N)
LONG: 104.45258°W (104°27'09.3"W)

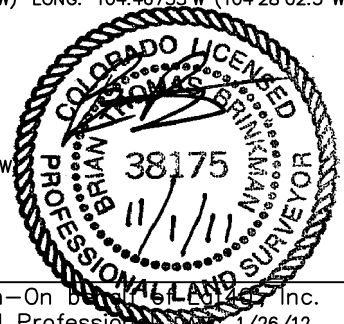
NOTE

According to Colorado law, you must commence any legal action based upon any defect in this W.L.C. within three years after you discover such defect. In no event, may any action based upon any defect in this survey be commenced more than ten years after the date of the certificate shown hereon. (13-80-105 C.R.S.)

LEGEND

- = ALIQUOT MONUMENT AS DESCRIBED
○ = CALCULATED POSITION

Brian T. Brinkman—On behalf of Lat40°, Inc.
Colorado Licensed Professional Surveyor No. 38175
Land Surveyor No. 38175
PROJECT# 2011312



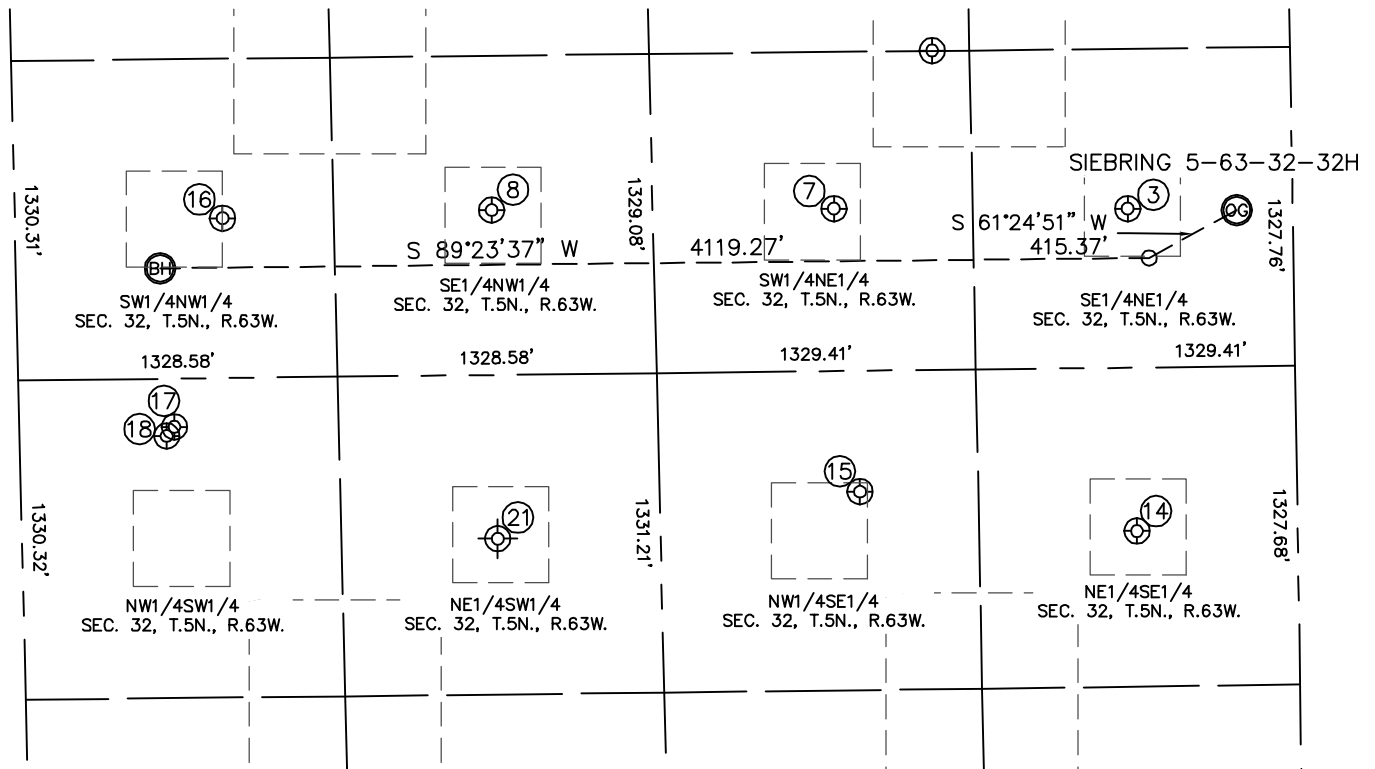


Lat40°, Inc. 1635 Foxtrail Drive, Suite 325 Loveland, CO 970-776-3321

SITE SKETCH

SIEBRING 5-63-32-32H

SECTION: 32
TOWNSHIP: 5N
RANGE: 63W



③

SIEBRING 42-32
SE1/4NE1/4
1994' FNL
687' FEL
LAT-40.35780N
LONG-104.45289W
PDOP: 1.7
ELEV: 4571'

⑦

SIEBRING 32-32
SW1/4NE1/4
1981' FNL
1909' FEL
LAT-40.35784N
LONG-104.45728W
PDOP: 1.6
ELEV: 4573'

⑧

VAN WYKE 22-32
SE1/4NW1/4
1972' FNL
1986' FNL
LAT-40.35786N
LONG-104.46239W
PDOP: 2.2
ELEV: 4576'

⑭

HERGENREDER 32-9
NE1/4SE1/4
1977' FSL
669' FEL
LAT-40.35411N
LONG-104.45281W
PDOP: 2.1
ELEV: 4570'

⑮

HERGENREDER BB 32-10DI
NW1/4SE1/4
2157' FSL
1819' FEL
LAT-40.35460N
LONG-104.45694W
PDOP: 1.7
ELEV: 4569'

⑮

CAMPBELL BB 32-5
SW1/4NW1/4
1994' FNL
865' FNL
LAT-40.35781N
LONG-104.46641W
PDOP: 1.6
ELEV: 4577'

⑰

CENTENNIAL-REIN 23-32
NW1/4SW1/4
2460' FSL
645' FNL
LAT-40.35543N
LONG-104.46717W
PDOP: 1.7
ELEV: 4578'

⑱

CENTENNIAL-REIN 13-32
NW1/4SW1/4
2423' FSL
612' FNL
LAT-40.35533N
LONG-104.46728W
PDOP: 1.6
ELEV: 4578'

⑳

REIN 11-32
(PLUGGED AND ABANDONED)
NE1/4SW1/4
1980' FSL (COGCC)
1980' FNL (COGCC)
LAT-40.35407N (COGCC)
LONG-104.46248W (COGCC)
PDOP: -N/A
ELEV: 4573' (COGCC)

