

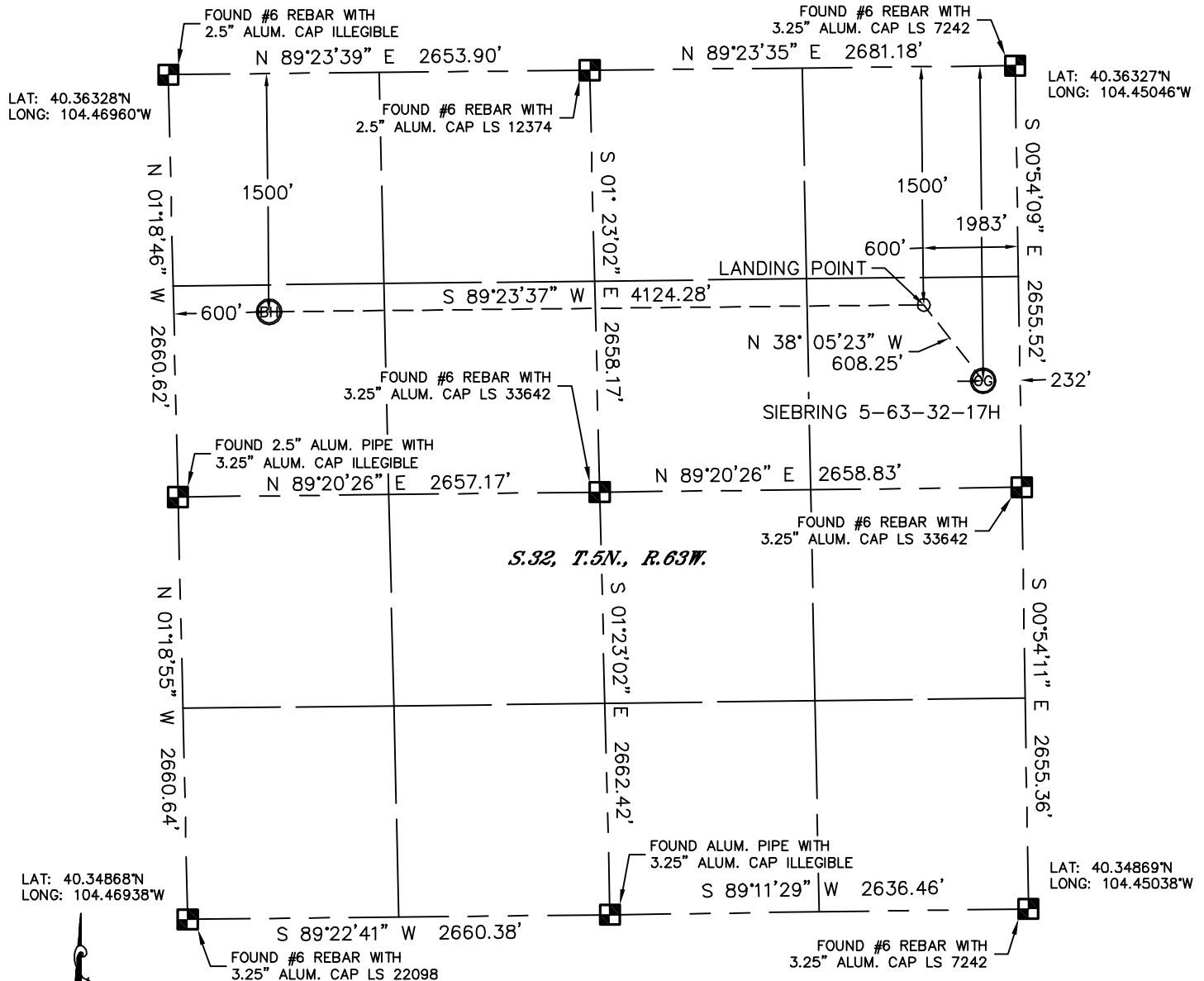


Lat40°, Inc. 1635 Foxtrail Drive, Suite 325 Loveland, CO 970-776-3321

# WELL LOCATION CERTIFICATE

THIS MAP DOES NOT REPRESENT A BOUNDARY SURVEY

SECTION: 32  
TOWNSHIP: 5N  
RANGE: 63W



In accordance with a request from Glenn Berglund with BILL BARRETT CORPORATION Lat40°, Inc. has determined the surface location of the SIEBRING 5-63-32-17H to be 1983' from the NORTH line and 232' from the EAST line and the bottom hole to be 1500' from the NORTH line and 600' from the WEST line as measured at right angles from the section lines of Section 32, Township 5 North, Range 63 West of the Sixth Principal Meridian, County of Weld, State of Colorado.

I hereby state that this Well Location Certificate was prepared by me, or under my direct supervision, that the fieldwork was completed on 10/25/11, for and on behalf of BILL BARRETT CORPORATION. That this is not a Land Survey Plat or an Improvement Survey Plat, and that it is not to be relied upon for establishment of fence, building, or other future improvement lines.

## NOTE:

- 1) Bearings shown are Grid Bearings of the Colorado State Plane Coordinate System, North Zone, North American Datum 1983/2007. The lineal dimensions as contained herein are based upon the "U.S. Survey Foot."
- 2) Ground elevations are based on an observed GPS elevation (NAVD 1988 DATUM).
- 3) IMPROVEMENTS: See LOCATION DRAWING for all visible improvements within 400' of disturbed area.
- 4) SURFACE USE: CROP LAND
- 5) INSTRUMENT OPERATOR: ADAM KELLY

## NOTE

According to Colorado law, you must commence any legal action based upon any defect in this W.L.C. within three years after you discover such defect. In no event, may any action based upon any defect in this survey be commenced more than ten years after the date of the certificate shown hereon. (13-80-105 C.R.S.)

## LEGEND

- = ALIQUOT MONUMENT AS DESCRIBED
- = CALCULATED POSITION

## SURFACE LOCATION

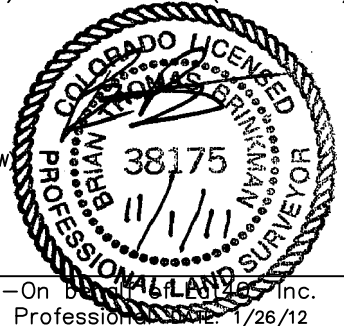
LAT: 40.35782°N (40°21'28.2"N)  
LONG: 104.45126°W (104°27'04.5"W)  
PDOP: 1.5  
ELEV: 4570'  
1/4, 1/4: SE1/4NE1/4  
NEAREST PROPERTY LINE: 232' E

## LANDING POINT

LAT: 40.35915°N (40°21'32.9"N)  
LONG: 104.45259°W (104°27'09.3"W)

## BOTTOM HOLE

LAT: 40.35916°N (40°21'33.0"N)  
LONG: 104.46738°W (104°28'02.6"W)



Brian T. Brinkman—On behalf of Lat40°, Inc.  
Colorado Licensed Professional Surveyor No. 38175  
Land Surveyor No. 38175  
PROJECT# 2011312

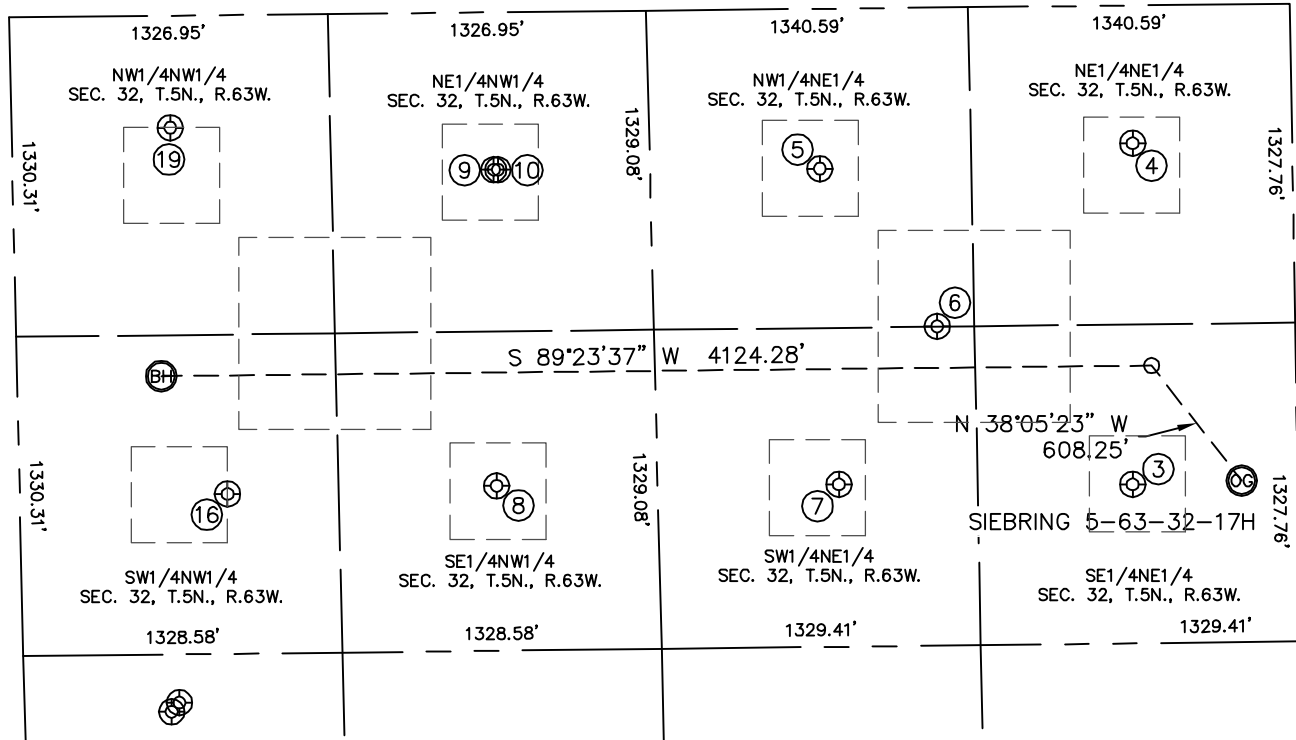


Lat40°, Inc. 1635 Foxtrail Drive, Suite 325 Loveland, CO 970-776-3321

# SITE SKETCH

SIEBRING 5-63-32-17H

SECTION: 32  
TOWNSHIP: 5N  
RANGE: 63W



③

SIEBRING 42-32  
SE1/4NE1/4  
1994' FNL  
687' FEL  
LAT-40.35780°N  
LONG-104.45289°W  
PDOP: 1.7  
ELEV: 4571'

④

SIEBRING 41-32  
NE1/4NE1/4  
574' FNL  
664' FEL  
LAT-40.36169°N  
LONG-104.45283°W  
PDOP: 2.6  
ELEV: 4571'

⑤

SIEBRING 31-32  
NW1/4NE1/4  
666' FNL  
1968' FEL  
LAT-40.36144°N  
LONG-104.45751°W  
PDOP: 2.5  
ELEV: 4573'

⑥

SIEBRING CNE-32  
NW1/4NE1/4  
1327' FNL  
1490' FEL  
LAT-40.35963°N  
LONG-104.45578°W  
PDOP: 1.6  
ELEV: 4571'

⑦

SIEBRING 32-32  
SW1/4NE1/4  
1981' FNL  
1909' FEL  
LAT-40.35784°N  
LONG-104.45728°W  
PDOP: 1.6  
ELEV: 4573'

⑧

VAN WYKE 22-32  
SE1/4NW1/4  
1972' FNL  
1986' FNL  
LAT-40.35786°N  
LONG-104.46239°W  
PDOP: 2.2  
ELEV: 4576'

⑨

VAN WYKE 42-32  
NE1/4NW1/4  
655' FNL  
2004' FWL  
LAT-40.36148°N  
LONG-104.46238°W  
PDOP: 1.4  
ELEV: 4575'

⑩

VAN WYKE 31-32  
NE1/4NW1/4  
655' FNL  
2021' FWL  
LAT-40.36148°N  
LONG-104.46232°W  
PDOP: 1.4  
ELEV: 4574'

⑩

CAMPBELL BB 32-5  
SW1/4NW1/4  
1994' FNL  
865' FWL  
LAT-40.35781°N  
LONG-104.46641°W  
PDOP: 1.6  
ELEV: 4577'

⑩

CAMPBELL BB 32-4  
NW1/4NW1/4  
466' FNL  
661' FWL  
LAT-40.36200°N  
LONG-104.46720°W  
PDOP: 2.1  
ELEV: 4573'

