

Well Planning Proposal FOR

**Bill Barrett Corp.
Siebring 5-63-32-16H
Weld Co., CO**

Well File: Design #1 (1/31/12)

Presented By:

Pat Rasmussen
Regional Manager

Bret Wolford
Well Planner



Sharewell
Energy Services, LP



Bill Barrett Corp.
Project: Weld Co., CO
Site: Sec.32-T5N-R63W
Well: Siebring 5-63-32-16H
Wellbore: Wellbore #1
Design: Design #1
Lat: 40° 21' 28.404 N
Long: 104° 27' 4.536 W
Pad GL: 4570.00
KB: WELL @ 4588.00usft



PROJECT DETAILS: Weld Co., CO

Geodetic System: US State Plane 1983
Datum: North American Datum 1983
Ellipsoid: GRS 1980
Zone: Colorado Northern Zone
System Datum: Mean Sea Level



Azimuths to True North
Magnetic North: 8.61°
Magnetic Field
Strength: 53078.4snT
Dip Angle: 67.05°
Date: 2012/01/31
Model: IGRF2010

WELL DETAILS: Siebring 5-63-32-16H

		Ground Level:	4570.00		
+N/-S	+E/-W	Northing	Easting	Latitude	Longitude
0.00	0.00	1374948.179	3292259.567	40° 21' 28.404 N	104° 27' 4.536 W

WELLBORE TARGET DETAILS (LAT/LONG)

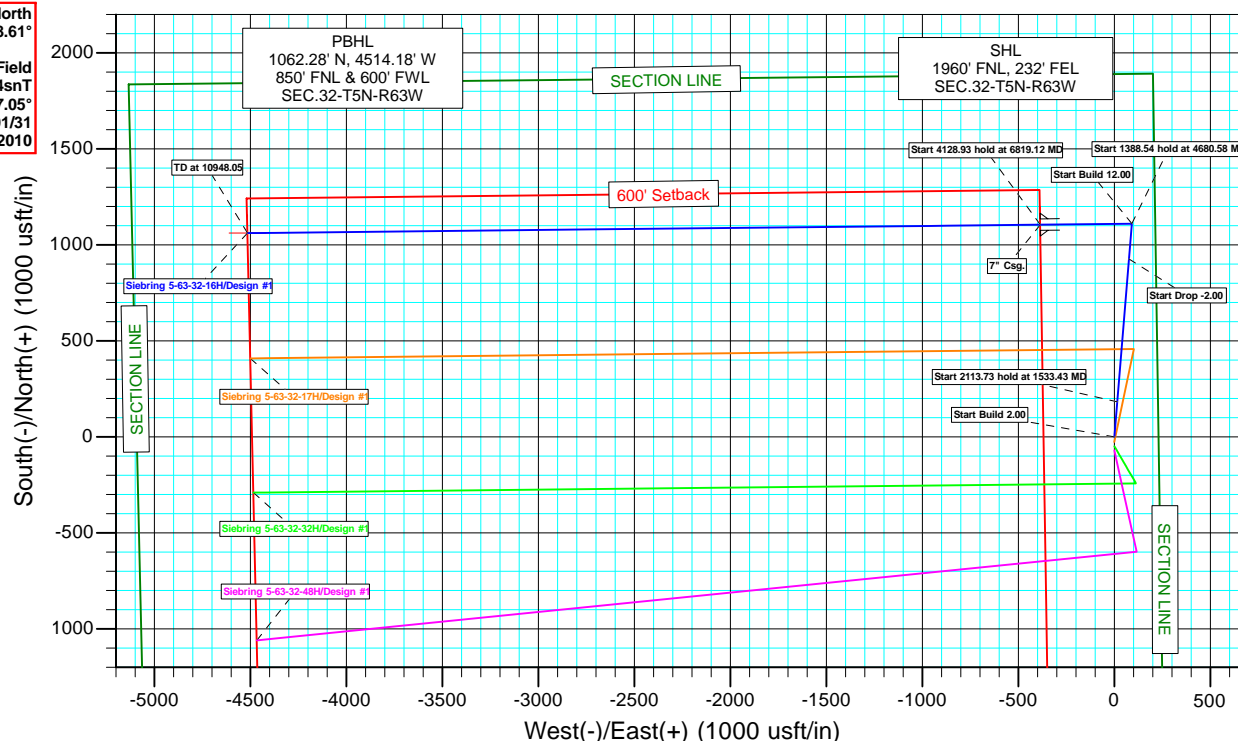
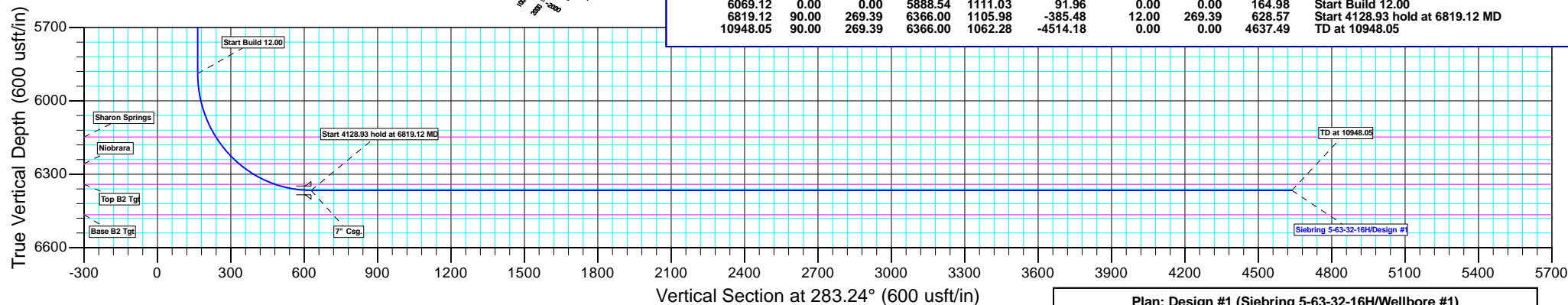
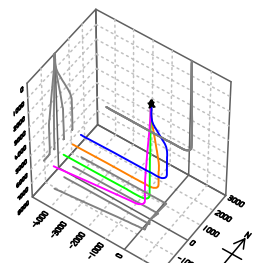
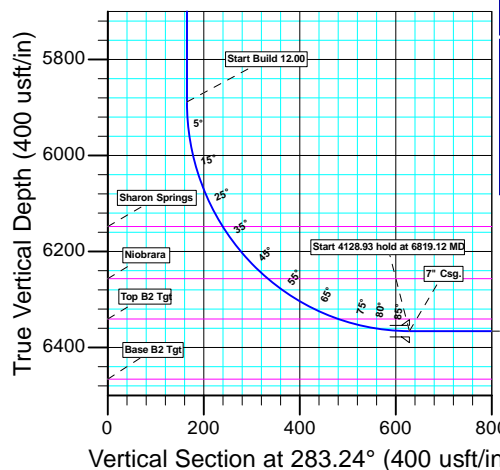
Name	TVD	+N/-S	+E/-W	Latitude	Longitude	Shape
16H LP	6366.00	1105.98	-385.47	40° 21' 39.333 N	104° 27' 9.516 W	Point
16H PBHL	6366.00	1062.28	-4514.18	40° 21' 38.897 N	104° 28' 2.852 W	Point

CASING DETAILS

TVD	MD	Name	Size
6366.00	6819.12	7" Csg.	7

FORMATION TOP DETAILS

TVDPath	MDPath	Formation
238.00	238.00	Pierre
3988.00	4165.81	Terry/Sussex
4638.00	4818.58	Shannon
6148.00	6343.42	Sharon Springs
6257.00	6490.01	Niobrara
6341.00	6663.91	Top B2 Tgt



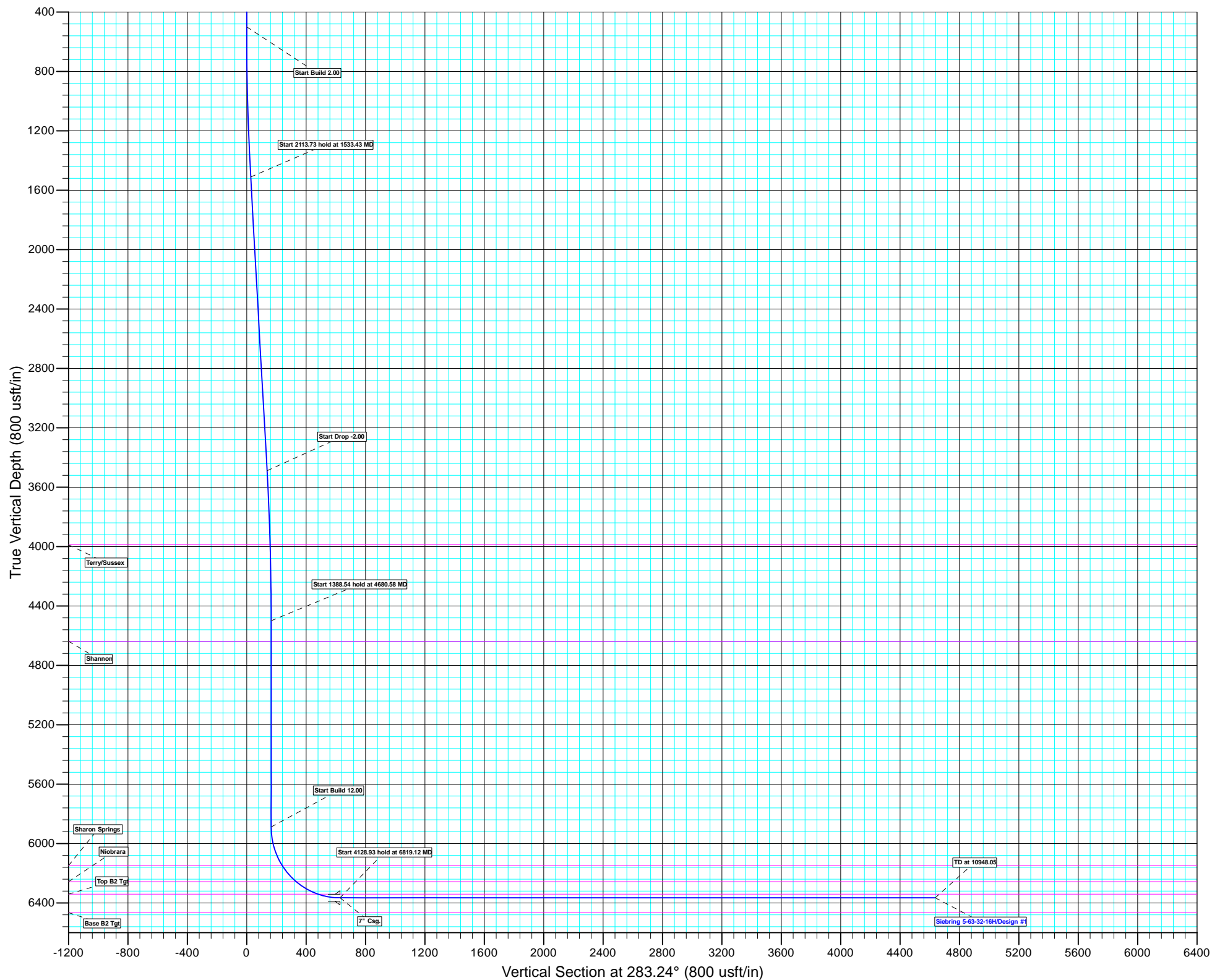
SECTION DETAILS

MD	Inc	Azi	TVD	+N/-S	+E/-W	Dleg	TFace	Vsect	Annotation
0.00	0.00	0.00	0.00	0.00	0.00	0.00	0.00	0.00	
500.00	0.00	0.00	500.00	0.00	0.00	0.00	0.00	0.00	Start Build 2.00
1533.43	20.67	4.73	1511.16	183.75	15.21	2.00	4.73	27.29	Start 2113.73 hold at 1533.43 MD
3647.15	20.67	4.73	3488.84	927.28	76.75	0.00	0.00	137.70	Start Drop -2.00
4680.58	0.00	0.00	4500.00	1111.03	91.96	2.00	180.00	164.98	Start 1388.54 hold at 4680.58 MD
6069.12	0.00	0.00	5888.54	1111.03	91.96	0.00	0.00	164.98	Start Build 12.00
6819.12	90.00	269.39	6366.00	1105.98	-385.48	12.00	269.39	628.57	Start 4128.93 hold at 6819.12 MD
10948.05	90.00	269.39	6366.00	1062.28	-4514.18	0.00	0.00	4637.49	TD at 10948.05

Plan: Design #1 (Siebring 5-63-32-16H/Wellbore #1)

Created By: Bret Wolford

Date: 14:14, January 31 2012





Bill Barrett Corporation

Bill Barrett Corp.

Weld Co., CO

Sec.32-T5N-R63W

Siebring 5-63-32-16H

Wellbore #1

Plan: Design #1

Standard Planning Report

31 January, 2012



Database:	EDM 5000.1 Single User Db	Local Co-ordinate Reference:	Well Siebring 5-63-32-16H
Company:	Bill Barrett Corp.	TVD Reference:	WELL @ 4588.00usft
Project:	Weld Co., CO	MD Reference:	WELL @ 4588.00usft
Site:	Sec.32-T5N-R63W	North Reference:	True
Well:	Siebring 5-63-32-16H	Survey Calculation Method:	Minimum Curvature
Wellbore:	Wellbore #1		
Design:	Design #1		

Project	Weld Co., CO		
Map System:	US State Plane 1983	System Datum:	Mean Sea Level
Geo Datum:	North American Datum 1983		
Map Zone:	Colorado Northern Zone		

Site		Sec.32-T5N-R63W			
Site Position:		Northing:	1,374,948.188 usft	Latitude:	40° 21' 28.404 N
From:	Lat/Long	Easting:	3,292,259.567 usft	Longitude:	104° 27' 4.536 W
Position Uncertainty:	0.00 usft	Slot Radius:	13-3/16"	Grid Convergence:	0.68 °

Well	Siebring 5-63-32-16H					
Well Position	+N/-S	-0.01 usft	Northing:	1,374,948.179 usft	Latitude:	40° 21' 28.404 N
	+E/-W	0.00 usft	Easting:	3,292,259.567 usft	Longitude:	104° 27' 4.536 W
Position Uncertainty		0.00 usft	Wellhead Elevation:	usft	Ground Level:	4,570.00 usft

Wellbore	Wellbore #1				
Magnetics	Model Name	Sample Date	Declination (°)	Dip Angle (°)	Field Strength (nT)
	IGRF2010	01/31/12	8.61	67.05	53,078

Design	Design #1			
Audit Notes:				
Version:	Phase:	PLAN	Tie On Depth:	0.00
Vertical Section:	Depth From (TVD) (usft)	+N/-S (usft)	+E/-W (usft)	Direction (°)
	0.00	0.00	0.00	283.24

Plan Sections										
Measured Depth (usft)	Inclination (°)	Azimuth (°)	Vertical Depth (usft)	+N/-S (usft)	+E/-W (usft)	Dogleg Rate (°/100usft)	Build Rate (°/100usft)	Turn Rate (°/100usft)	TFO (°)	Target
0.00	0.00	0.00	0.00	0.00	0.00	0.00	0.00	0.00	0.00	
500.00	0.00	0.00	500.00	0.00	0.00	0.00	0.00	0.00	0.00	
1,533.43	20.67	4.73	1,511.16	183.75	15.21	2.00	2.00	0.00	4.73	
3,647.15	20.67	4.73	3,488.84	927.28	76.75	0.00	0.00	0.00	0.00	
4,680.58	0.00	0.00	4,500.00	1,111.03	91.96	2.00	-2.00	0.00	180.00	
6,069.12	0.00	0.00	5,888.54	1,111.03	91.96	0.00	0.00	0.00	0.00	
6,819.12	90.00	269.39	6,366.00	1,105.98	-385.48	12.00	12.00	0.00	269.39	16H PBHL
10,948.05	90.00	269.39	6,366.00	1,062.28	-4,514.18	0.00	0.00	0.00	0.00	16H PBHL

Database:	EDM 5000.1 Single User Db	Local Co-ordinate Reference:	Well Siebring 5-63-32-16H
Company:	Bill Barrett Corp.	TVD Reference:	WELL @ 4588.00usft
Project:	Weld Co., CO	MD Reference:	WELL @ 4588.00usft
Site:	Sec.32-T5N-R63W	North Reference:	True
Well:	Siebring 5-63-32-16H	Survey Calculation Method:	Minimum Curvature
Wellbore:	Wellbore #1		
Design:	Design #1		

Planned Survey									
Measured Depth (usft)	Inclination (°)	Azimuth (°)	Vertical Depth (usft)	+N/-S (usft)	+E/-W (usft)	Vertical Section (usft)	Dogleg Rate (°/100usft)	Build Rate (°/100usft)	Turn Rate (°/100usft)
0.00	0.00	0.00	0.00	0.00	0.00	0.00	0.00	0.00	0.00
100.00	0.00	0.00	100.00	0.00	0.00	0.00	0.00	0.00	0.00
200.00	0.00	0.00	200.00	0.00	0.00	0.00	0.00	0.00	0.00
Pierre									
238.00	0.00	0.00	238.00	0.00	0.00	0.00	0.00	0.00	0.00
300.00	0.00	0.00	300.00	0.00	0.00	0.00	0.00	0.00	0.00
400.00	0.00	0.00	400.00	0.00	0.00	0.00	0.00	0.00	0.00
Start Build 2.00									
500.00	0.00	0.00	500.00	0.00	0.00	0.00	0.00	0.00	0.00
600.00	2.00	4.73	599.98	1.74	0.14	0.26	2.00	2.00	0.00
700.00	4.00	4.73	699.84	6.95	0.58	1.03	2.00	2.00	0.00
800.00	6.00	4.73	799.45	15.64	1.29	2.32	2.00	2.00	0.00
900.00	8.00	4.73	898.70	27.78	2.30	4.13	2.00	2.00	0.00
1,000.00	10.00	4.73	997.47	43.37	3.59	6.44	2.00	2.00	0.00
1,100.00	12.00	4.73	1,095.62	62.39	5.16	9.26	2.00	2.00	0.00
1,200.00	14.00	4.73	1,193.06	84.81	7.02	12.59	2.00	2.00	0.00
1,300.00	16.00	4.73	1,289.64	110.60	9.15	16.42	2.00	2.00	0.00
1,400.00	18.00	4.73	1,385.27	139.73	11.57	20.75	2.00	2.00	0.00
1,500.00	20.00	4.73	1,479.82	172.18	14.25	25.57	2.00	2.00	0.00
Start 2113.73 hold at 1533.43 MD									
1,533.43	20.67	4.73	1,511.16	183.75	15.21	27.29	2.00	2.00	0.00
1,600.00	20.67	4.73	1,573.45	207.17	17.15	30.76	0.00	0.00	0.00
1,700.00	20.67	4.73	1,667.01	242.35	20.06	35.99	0.00	0.00	0.00
1,800.00	20.67	4.73	1,760.58	277.52	22.97	41.21	0.00	0.00	0.00
1,900.00	20.67	4.73	1,854.14	312.70	25.88	46.43	0.00	0.00	0.00
2,000.00	20.67	4.73	1,947.70	347.88	28.79	51.66	0.00	0.00	0.00
2,100.00	20.67	4.73	2,041.27	383.05	31.71	56.88	0.00	0.00	0.00
2,200.00	20.67	4.73	2,134.83	418.23	34.62	62.10	0.00	0.00	0.00
2,300.00	20.67	4.73	2,228.39	453.40	37.53	67.33	0.00	0.00	0.00
2,400.00	20.67	4.73	2,321.96	488.58	40.44	72.55	0.00	0.00	0.00
2,500.00	20.67	4.73	2,415.52	523.75	43.35	77.78	0.00	0.00	0.00
2,600.00	20.67	4.73	2,509.09	558.93	46.26	83.00	0.00	0.00	0.00
2,700.00	20.67	4.73	2,602.65	594.11	49.17	88.22	0.00	0.00	0.00
2,800.00	20.67	4.73	2,696.21	629.28	52.09	93.45	0.00	0.00	0.00
2,900.00	20.67	4.73	2,789.78	664.46	55.00	98.67	0.00	0.00	0.00
3,000.00	20.67	4.73	2,883.34	699.63	57.91	103.89	0.00	0.00	0.00
3,100.00	20.67	4.73	2,976.90	734.81	60.82	109.12	0.00	0.00	0.00
3,200.00	20.67	4.73	3,070.47	769.99	63.73	114.34	0.00	0.00	0.00
3,300.00	20.67	4.73	3,164.03	805.16	66.64	119.56	0.00	0.00	0.00
3,400.00	20.67	4.73	3,257.60	840.34	69.55	124.79	0.00	0.00	0.00
3,500.00	20.67	4.73	3,351.16	875.51	72.47	130.01	0.00	0.00	0.00
3,600.00	20.67	4.73	3,444.72	910.69	75.38	135.23	0.00	0.00	0.00
Start Drop -2.00									
3,647.15	20.67	4.73	3,488.84	927.28	76.75	137.70	0.00	0.00	0.00
3,700.00	19.61	4.73	3,538.46	945.41	78.25	140.39	2.00	-2.00	0.00
3,800.00	17.61	4.73	3,633.22	977.21	80.88	145.11	2.00	-2.00	0.00
3,900.00	15.61	4.73	3,729.04	1,005.70	83.24	149.34	2.00	-2.00	0.00
4,000.00	13.61	4.73	3,825.80	1,030.84	85.32	153.08	2.00	-2.00	0.00
4,100.00	11.61	4.73	3,923.39	1,052.60	87.12	156.31	2.00	-2.00	0.00
Terry/Sussex									
4,165.81	10.30	4.73	3,988.00	1,065.06	88.16	158.16	2.00	-2.00	0.00
4,200.00	9.61	4.73	4,021.67	1,070.95	88.64	159.03	2.00	-2.00	0.00
4,300.00	7.61	4.73	4,120.54	1,085.87	89.88	161.25	2.00	-2.00	0.00
4,400.00	5.61	4.73	4,219.87	1,097.35	90.83	162.95	2.00	-2.00	0.00

Database:	EDM 5000.1 Single User Db	Local Co-ordinate Reference:	Well Siebring 5-63-32-16H
Company:	Bill Barrett Corp.	TVD Reference:	WELL @ 4588.00usft
Project:	Weld Co., CO	MD Reference:	WELL @ 4588.00usft
Site:	Sec.32-T5N-R63W	North Reference:	True
Well:	Siebring 5-63-32-16H	Survey Calculation Method:	Minimum Curvature
Wellbore:	Wellbore #1		
Design:	Design #1		

Planned Survey									
Measured Depth (usft)	Inclination (°)	Azimuth (°)	Vertical Depth (usft)	+N/-S (usft)	+E/-W (usft)	Vertical Section (usft)	Dogleg Rate (°/100usft)	Build Rate (°/100usft)	Turn Rate (°/100usft)
4,500.00	3.61	4.73	4,319.54	1,105.36	91.49	164.14	2.00	-2.00	0.00
4,600.00	1.61	4.73	4,419.43	1,109.90	91.87	164.82	2.00	-2.00	0.00
Start 1388.54 hold at 4680.58 MD									
4,680.58	0.00	0.00	4,500.00	1,111.03	91.96	164.98	2.00	-2.00	0.00
4,700.00	0.00	0.00	4,519.42	1,111.03	91.96	164.98	0.00	0.00	0.00
4,800.00	0.00	0.00	4,619.42	1,111.03	91.96	164.98	0.00	0.00	0.00
Shannon									
4,818.58	0.00	0.00	4,638.00	1,111.03	91.96	164.98	0.00	0.00	0.00
4,900.00	0.00	0.00	4,719.42	1,111.03	91.96	164.98	0.00	0.00	0.00
5,000.00	0.00	0.00	4,819.42	1,111.03	91.96	164.98	0.00	0.00	0.00
5,100.00	0.00	0.00	4,919.42	1,111.03	91.96	164.98	0.00	0.00	0.00
5,200.00	0.00	0.00	5,019.42	1,111.03	91.96	164.98	0.00	0.00	0.00
5,300.00	0.00	0.00	5,119.42	1,111.03	91.96	164.98	0.00	0.00	0.00
5,400.00	0.00	0.00	5,219.42	1,111.03	91.96	164.98	0.00	0.00	0.00
5,500.00	0.00	0.00	5,319.42	1,111.03	91.96	164.98	0.00	0.00	0.00
5,600.00	0.00	0.00	5,419.42	1,111.03	91.96	164.98	0.00	0.00	0.00
5,700.00	0.00	0.00	5,519.42	1,111.03	91.96	164.98	0.00	0.00	0.00
5,800.00	0.00	0.00	5,619.42	1,111.03	91.96	164.98	0.00	0.00	0.00
5,900.00	0.00	0.00	5,719.42	1,111.03	91.96	164.98	0.00	0.00	0.00
6,000.00	0.00	0.00	5,819.42	1,111.03	91.96	164.98	0.00	0.00	0.00
Start Build 12.00									
6,069.12	0.00	0.00	5,888.54	1,111.03	91.96	164.98	0.00	0.00	0.00
6,075.00	0.71	269.39	5,894.42	1,111.03	91.92	165.02	12.00	12.00	0.00
6,100.00	3.71	269.39	5,919.40	1,111.02	90.96	165.95	12.00	12.00	0.00
6,125.00	6.71	269.39	5,944.29	1,111.00	88.69	168.15	12.00	12.00	0.00
6,150.00	9.71	269.39	5,969.03	1,110.96	85.13	171.62	12.00	12.00	0.00
6,175.00	12.71	269.39	5,993.56	1,110.91	80.27	176.33	12.00	12.00	0.00
6,200.00	15.71	269.39	6,017.79	1,110.84	74.13	182.29	12.00	12.00	0.00
6,225.00	18.71	269.39	6,041.67	1,110.76	66.74	189.47	12.00	12.00	0.00
6,250.00	21.71	269.39	6,065.13	1,110.67	58.11	197.85	12.00	12.00	0.00
6,275.00	24.71	269.39	6,088.10	1,110.57	48.26	207.42	12.00	12.00	0.00
6,300.00	27.71	269.39	6,110.53	1,110.45	37.22	218.13	12.00	12.00	0.00
6,325.00	30.71	269.39	6,132.35	1,110.32	25.02	229.98	12.00	12.00	0.00
Sharon Springs									
6,343.42	32.92	269.39	6,148.00	1,110.22	15.32	239.40	12.00	12.00	0.00
6,350.00	33.71	269.39	6,153.50	1,110.18	11.70	242.91	12.00	12.00	0.00
6,375.00	36.71	269.39	6,173.92	1,110.03	-2.71	256.90	12.00	12.00	0.00
6,400.00	39.71	269.39	6,193.57	1,109.86	-18.17	271.92	12.00	12.00	0.00
6,425.00	42.71	269.39	6,212.37	1,109.69	-34.63	287.90	12.00	12.00	0.00
6,450.00	45.71	269.39	6,230.29	1,109.51	-52.06	304.83	12.00	12.00	0.00
6,475.00	48.71	269.39	6,247.27	1,109.31	-70.40	322.64	12.00	12.00	0.00
Niobrara									
6,490.01	50.51	269.39	6,257.00	1,109.19	-81.83	333.73	12.00	12.00	0.00
6,500.00	51.71	269.39	6,263.27	1,109.11	-89.61	341.28	12.00	12.00	0.00
6,525.00	54.71	269.39	6,278.24	1,108.90	-109.63	360.72	12.00	12.00	0.00
6,550.00	57.71	269.39	6,292.15	1,108.68	-130.40	380.89	12.00	12.00	0.00
6,575.00	60.71	269.39	6,304.95	1,108.45	-151.87	401.74	12.00	12.00	0.00
6,600.00	63.71	269.39	6,316.60	1,108.22	-173.98	423.21	12.00	12.00	0.00
6,625.00	66.71	269.39	6,327.08	1,107.98	-196.67	445.24	12.00	12.00	0.00
6,650.00	69.71	269.39	6,336.37	1,107.73	-219.88	467.78	12.00	12.00	0.00
Top B2 Tgt									
6,663.91	71.38	269.39	6,341.00	1,107.59	-233.00	480.51	12.00	12.00	0.00
6,675.00	72.71	269.39	6,344.42	1,107.48	-243.55	490.75	12.00	12.00	0.00

Database:	EDM 5000.1 Single User Db	Local Co-ordinate Reference:	Well Siebring 5-63-32-16H
Company:	Bill Barrett Corp.	TVD Reference:	WELL @ 4588.00usft
Project:	Weld Co., CO	MD Reference:	WELL @ 4588.00usft
Site:	Sec.32-T5N-R63W	North Reference:	True
Well:	Siebring 5-63-32-16H	Survey Calculation Method:	Minimum Curvature
Wellbore:	Wellbore #1		
Design:	Design #1		

Planned Survey									
Measured Depth (usft)	Inclination (°)	Azimuth (°)	Vertical Depth (usft)	+N/-S (usft)	+E/-W (usft)	Vertical Section (usft)	Dogleg Rate (°/100usft)	Build Rate (°/100usft)	Turn Rate (°/100usft)
6,700.00	75.71	269.39	6,351.22	1,107.22	-267.60	514.11	12.00	12.00	0.00
6,725.00	78.71	269.39	6,356.76	1,106.97	-291.97	537.78	12.00	12.00	0.00
6,750.00	81.71	269.39	6,361.01	1,106.71	-316.60	561.69	12.00	12.00	0.00
6,775.00	84.71	269.39	6,363.97	1,106.44	-341.42	585.79	12.00	12.00	0.00
6,800.00	87.71	269.39	6,365.62	1,106.18	-366.37	610.01	12.00	12.00	0.00
16H LP									
6,819.11	90.00	269.39	6,366.00	1,105.98	-385.47	628.56	12.00	12.00	0.00
Start 4128.93 hold at 6819.12 MD - 7" Csg.									
6,819.12	90.00	269.39	6,366.00	1,105.98	-385.48	628.57	12.00	12.00	0.00
6,900.00	90.00	269.39	6,366.00	1,105.12	-466.35	707.10	0.00	0.00	0.00
7,000.00	90.00	269.39	6,366.00	1,104.06	-566.35	804.19	0.00	0.00	0.00
7,100.00	90.00	269.39	6,366.00	1,103.01	-666.34	901.29	0.00	0.00	0.00
7,200.00	90.00	269.39	6,366.00	1,101.95	-766.34	998.38	0.00	0.00	0.00
7,300.00	90.00	269.39	6,366.00	1,100.89	-866.33	1,095.47	0.00	0.00	0.00
7,400.00	90.00	269.39	6,366.00	1,099.83	-966.33	1,192.57	0.00	0.00	0.00
7,500.00	90.00	269.39	6,366.00	1,098.77	-1,066.32	1,289.66	0.00	0.00	0.00
7,600.00	90.00	269.39	6,366.00	1,097.71	-1,166.32	1,386.75	0.00	0.00	0.00
7,700.00	90.00	269.39	6,366.00	1,096.66	-1,266.31	1,483.85	0.00	0.00	0.00
7,800.00	90.00	269.39	6,366.00	1,095.60	-1,366.30	1,580.94	0.00	0.00	0.00
7,900.00	90.00	269.39	6,366.00	1,094.54	-1,466.30	1,678.03	0.00	0.00	0.00
8,000.00	90.00	269.39	6,366.00	1,093.48	-1,566.29	1,775.13	0.00	0.00	0.00
8,100.00	90.00	269.39	6,366.00	1,092.42	-1,666.29	1,872.22	0.00	0.00	0.00
8,200.00	90.00	269.39	6,366.00	1,091.36	-1,766.28	1,969.31	0.00	0.00	0.00
8,300.00	90.00	269.39	6,366.00	1,090.31	-1,866.28	2,066.40	0.00	0.00	0.00
8,400.00	90.00	269.39	6,366.00	1,089.25	-1,966.27	2,163.50	0.00	0.00	0.00
8,500.00	90.00	269.39	6,366.00	1,088.19	-2,066.27	2,260.59	0.00	0.00	0.00
8,600.00	90.00	269.39	6,366.00	1,087.13	-2,166.26	2,357.68	0.00	0.00	0.00
8,700.00	90.00	269.39	6,366.00	1,086.07	-2,266.25	2,454.78	0.00	0.00	0.00
8,800.00	90.00	269.39	6,366.00	1,085.02	-2,366.25	2,551.87	0.00	0.00	0.00
8,900.00	90.00	269.39	6,366.00	1,083.96	-2,466.24	2,648.96	0.00	0.00	0.00
9,000.00	90.00	269.39	6,366.00	1,082.90	-2,566.24	2,746.06	0.00	0.00	0.00
9,100.00	90.00	269.39	6,366.00	1,081.84	-2,666.23	2,843.15	0.00	0.00	0.00
9,200.00	90.00	269.39	6,366.00	1,080.78	-2,766.23	2,940.24	0.00	0.00	0.00
9,300.00	90.00	269.39	6,366.00	1,079.72	-2,866.22	3,037.34	0.00	0.00	0.00
9,400.00	90.00	269.39	6,366.00	1,078.67	-2,966.21	3,134.43	0.00	0.00	0.00
9,500.00	90.00	269.39	6,366.00	1,077.61	-3,066.21	3,231.52	0.00	0.00	0.00
9,600.00	90.00	269.39	6,366.00	1,076.55	-3,166.20	3,328.62	0.00	0.00	0.00
9,700.00	90.00	269.39	6,366.00	1,075.49	-3,266.20	3,425.71	0.00	0.00	0.00
9,800.00	90.00	269.39	6,366.00	1,074.43	-3,366.19	3,522.80	0.00	0.00	0.00
9,900.00	90.00	269.39	6,366.00	1,073.37	-3,466.19	3,619.90	0.00	0.00	0.00
10,000.00	90.00	269.39	6,366.00	1,072.32	-3,566.18	3,716.99	0.00	0.00	0.00
10,100.00	90.00	269.39	6,366.00	1,071.26	-3,666.18	3,814.08	0.00	0.00	0.00
10,200.00	90.00	269.39	6,366.00	1,070.20	-3,766.17	3,911.18	0.00	0.00	0.00
10,300.00	90.00	269.39	6,366.00	1,069.14	-3,866.16	4,008.27	0.00	0.00	0.00
10,400.00	90.00	269.39	6,366.00	1,068.08	-3,966.16	4,105.36	0.00	0.00	0.00
10,500.00	90.00	269.39	6,366.00	1,067.03	-4,066.15	4,202.46	0.00	0.00	0.00
10,600.00	90.00	269.39	6,366.00	1,065.97	-4,166.15	4,299.55	0.00	0.00	0.00
10,700.00	90.00	269.39	6,366.00	1,064.91	-4,266.14	4,396.64	0.00	0.00	0.00
10,800.00	90.00	269.39	6,366.00	1,063.85	-4,366.14	4,493.74	0.00	0.00	0.00
10,900.00	90.00	269.39	6,366.00	1,062.79	-4,466.13	4,590.83	0.00	0.00	0.00
TD at 10948.05 - 16H PBHL									
10,948.05	90.00	269.39	6,366.00	1,062.28	-4,514.18	4,637.49	0.00	0.00	0.00

Database:	EDM 5000.1 Single User Db	Local Co-ordinate Reference:	Well Siebring 5-63-32-16H
Company:	Bill Barrett Corp.	TVD Reference:	WELL @ 4588.00usft
Project:	Weld Co., CO	MD Reference:	WELL @ 4588.00usft
Site:	Sec.32-T5N-R63W	North Reference:	True
Well:	Siebring 5-63-32-16H	Survey Calculation Method:	Minimum Curvature
Wellbore:	Wellbore #1		
Design:	Design #1		

Design Targets									
Target Name									
- hit/miss target	Dip Angle	Dip Dir.	TVD	+N/-S	+E/-W	Northing	Easting	Latitude	Longitude
- Shape	(°)	(°)	(usft)	(usft)	(usft)	(usft)	(usft)		
16H LP	0.00	0.00	6,366.00	1,105.98	-385.47	1,376,049.527	3,291,861.044	40° 21' 39.333 N	104° 27' 9.516 W
- plan misses target center by 0.01usft at 6819.11usft MD (6366.00 TVD, 1105.98 N, -385.47 E)									
- Point									
16H PBHL	0.00	0.00	6,366.00	1,062.28	-4,514.18	1,375,957.002	3,287,733.139	40° 21' 38.897 N	104° 28' 2.852 W
- plan hits target center									
- Point									

Casing Points				
Measured Depth	Vertical Depth		Casing Diameter	Hole Diameter
(usft)	(usft)	Name	(")	(")
6,819.12	6,366.00	7" Csg.	7	8-3/4

Formations					
Measured Depth	Vertical Depth			Dip	Dip Direction
(usft)	(usft)	Name	Lithology	(°)	(°)
238.00	238.00	Pierre		0.00	
4,165.81	3,988.00	Terry/Sussex		0.00	
4,818.58	4,638.00	Shannon		0.00	
6,343.42	6,148.00	Sharon Springs		0.00	
6,490.01	6,257.00	Niobrara		0.00	
6,663.91	6,341.00	Top B2 Tgt		0.00	

Plan Annotations				
Measured Depth	Vertical Depth	Local Coordinates		
(usft)	(usft)	+N/-S	+E/-W	Comment
(usft)	(usft)	(usft)	(usft)	
500.00	500.00	0.00	0.00	Start Build 2.00
1,533.43	1,511.16	183.75	15.21	Start 2113.73 hold at 1533.43 MD
3,647.15	3,488.84	927.28	76.75	Start Drop -2.00
4,680.58	4,500.00	1,111.03	91.96	Start 1388.54 hold at 4680.58 MD
6,069.12	5,888.54	1,111.03	91.96	Start Build 12.00
6,819.12	6,366.00	1,105.98	-385.48	Start 4128.93 hold at 6819.12 MD
10,948.05	6,366.00	1,062.28	-4,514.18	TD at 10948.05