

Archer

TVD Log

1:600 Feet

Oil Co: **Carrizo Oil and Gas**
Well Name: **Pergamos 3-44-7-60**
LSD: **Weld County Colorado, WCR105 &**
State/Prov: **Colorado**
Country: **USA**
Job #: **RL11633**

Oil Company: **Carrizo Oil and Gas**
Well Name: **Pergamos 3-44-7-60**
LSD: **Weld County Colorado, WCR105 & WCR 86**
State/Prov: **Colorado**
Country: **USA**
Job #: **RL11633**
Drilling Co. **Multi Shot Directional Service**
Rig #: **Xtreme 19**
Co Rep 1: **Tom Harris**
Co Rep 2:
Geologist 1:
Geologist 2:
DD 1: **Tom Beckett**
DD 2: **Cheech Lopez**
MWD 1: **Chris Anderson**
MWD 2: **Alberto Belina**
MWD Kit: **35**

Well Lic:
API/UWI:N/A
AFE #:

Casing Depths		TVD	Depth	Date		KB: 17.00	
Surface: 1422		Start: 1416.17	12-7-2011		GL:4935.00		
Intermediate:		End: 1371.50			DF:4918.00		
Run #	Hole Size(mm)	Gamma Offset	Survey Offset	Depth Start	Depth End	Date Start	Date End
01	7.875	51.0	60.0	1453.0	6235.0	Dec 07, 11	Dec 11, 11
02	7.875	47.0	57.0	6235.0	6580.0	Dec 11, 11	Dec 13, 11

-FIELD COPY ONLY-

Archer The Well Company uses its best efforts to provide customers with accurate information on services performed but will not be held liable or responsible for accuracy of information or interpretation.

Client: **Carrizo Oil and Gas**

Well Name: **Pergamos 3-44-7-60**

Well Lic:

API/UWI: **N/A**

Surface LSD: **Weld County Colorado, WCR105 & WCR 86** KB: **17.00**

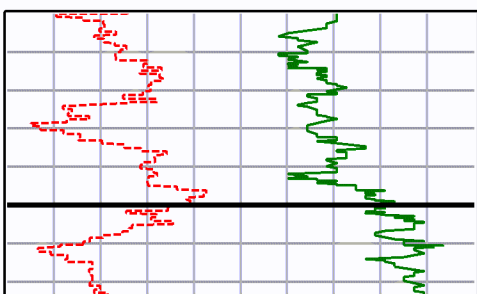
State/Prov: **Colorado** Job #: **RL11633** GL: **4935.00**

Country: **USA** MWD Kit: **35** DF: **4918.00**

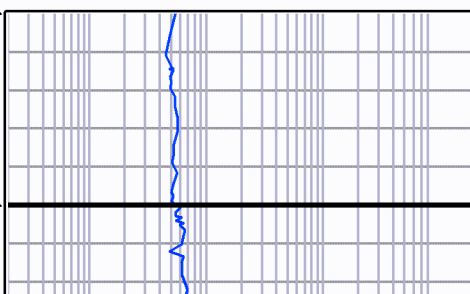
0 ROP [ft per hr] 200
0 Gamma [API] 250
250 Gamma [API] 500

Feet
2":100'
TVD

0.2 Formation Res [ohm/m] 2000

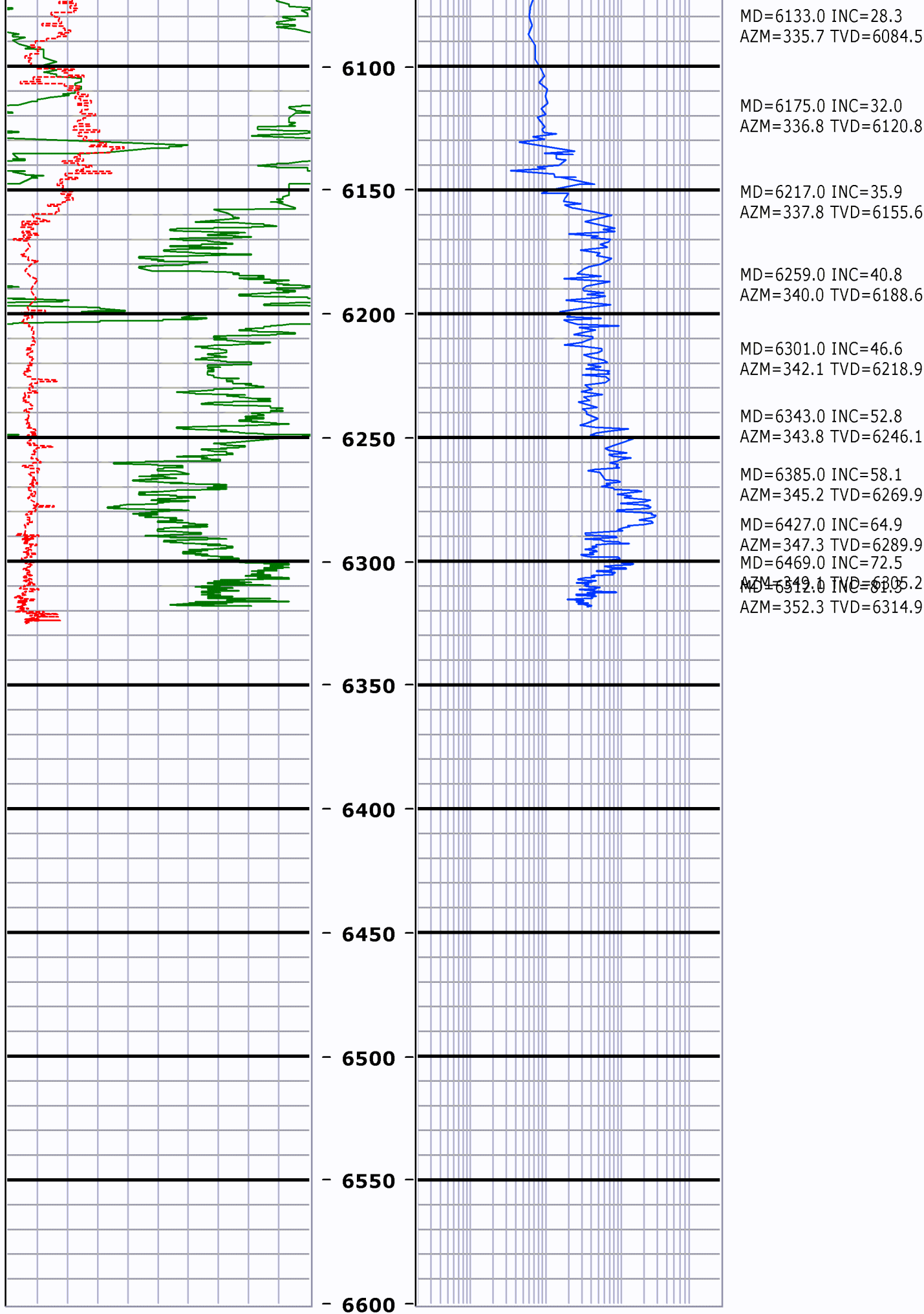


6000
6050



MD=6048.0 INC=21.5
AZM=332.9 TVD=6007.4

MD=6090.0 INC=24.6
AZM=334.3 TVD=6046.0



0 ROP [ft per hr] 200

Feet

0.2 Formation Res [ohm/m] 2000

0	Gamma [API]	250	2":100' TVD	
250	Gamma [API]	500		