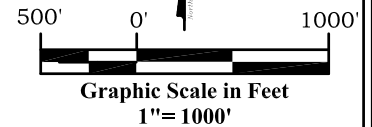
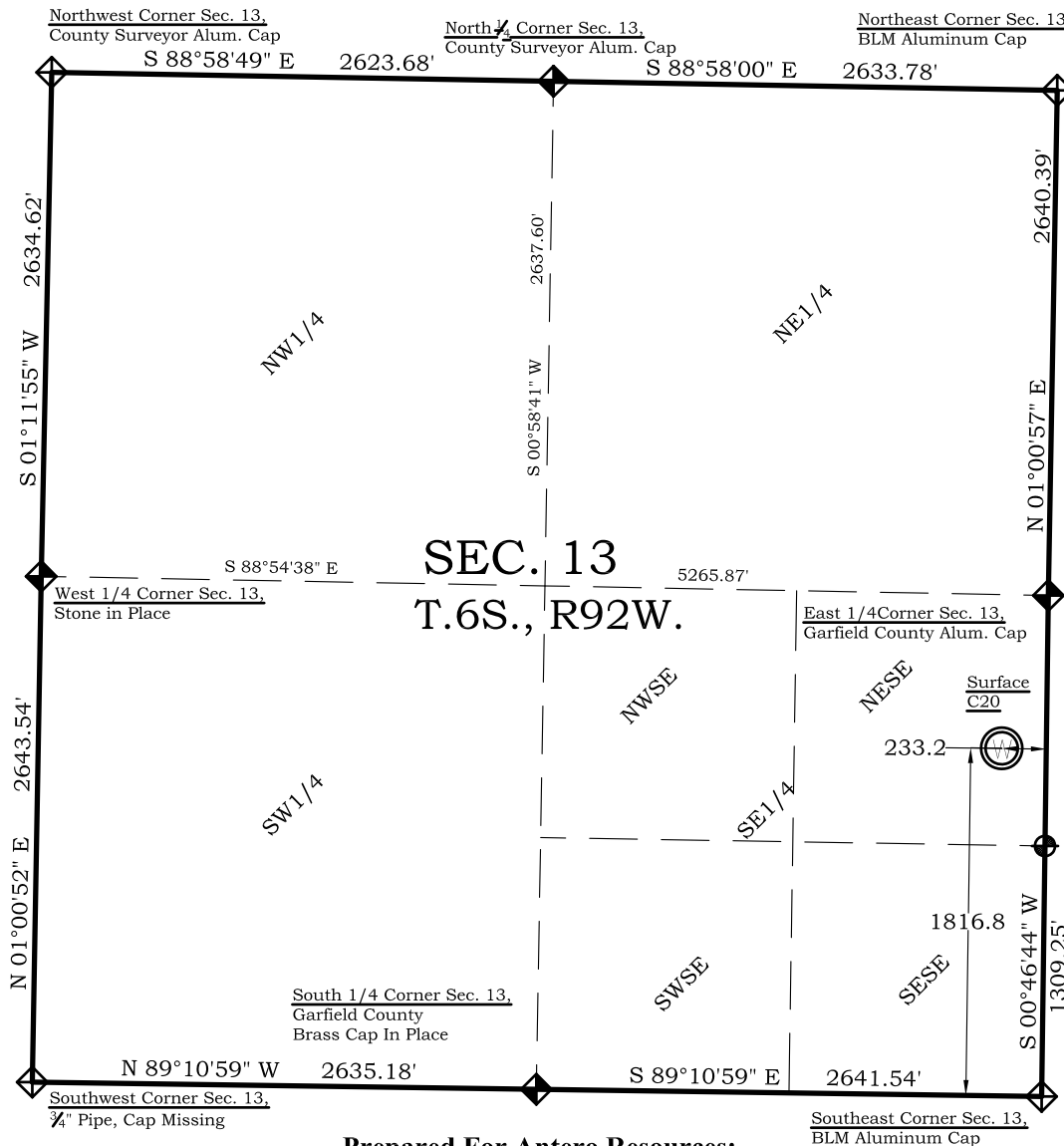


As Drilled Well Location Plat
McLin C20
Section 13, Township 6 South, Range 92 West



Legend

- ◈ - Field Surveyed Section Corner
- ◈ - Field Surveyed Quarter Corner
- ⊙ - Calculated Section Corner Location
- ⊙ - Field Surveyed 1/6 Corner

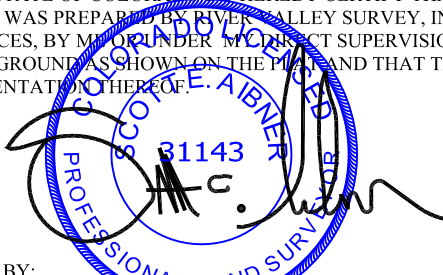
Surface: McLin C20

1817' FSL
233' FEL
Gnd El= 5725.6
NAD83
Lat: 39.525025043°N
Long: 107.607176773°W
NAD27
Lat: 39.525044434°N
Long: 107.606563762°W
UTM 13 NORTH
NAD 1983
NORTHING
14364432.860
EASTING
905191.976

Prepared For Antero Resources:
As Drilled McLin C20 Well Situate in The NE1/4SE1/4
Section 13, Township 6 South, Range 92 West of the 6 th.
Principal Meridian, County of Garfield, State of Colorado

SURVEYOR'S CERTIFICATE

I, SCOTT E. AIBNER, A REGISTERED LAND SURVEYOR, LICENSED UNDER THE LAWS OF THE STATE OF COLORADO DO HEREBY CERTIFY THAT THE SURVEY SHOWN HEREON WAS PREPARED BY RIVER VALLEY SURVEY, INC., FOR ANTERO RESOURCES, BY MEANS OF MY DIRECT SUPERVISION AND HAS BEEN STAKED ON THE GROUND AS SHOWN ON THE PLAT AND THAT THIS PLAT IS A TRUE REPRESENTATION THEREOF.

BY: 
SCOTT E. AIBNER, COLORADO REG. NO. 31143

Notes:

1. LATITUDE AND LONGITUDE COORDINATES ARE DIFFERENTIALLY CORRECTED AND BASED ON PUBLISHED NGS CONTROL STATION "WDP-5". SYSTEM: UTM ZONE: 13 NORTH DATUM: NAD 1983 (CONUS)
2. ELEVATIONS ARE BASED ON NAVD OF 1983.
3. ALL BOTTOM AND TOP HOLE LOCATIONS ARE MEASURED 90 DEGREES FROM SECTION LINE.
4. USGS QUADRANGLE MAP "SILT COLORADO".
5. CURRENT SURFACE LAND USE: HAY FIELD.
6. PDOP AT THE TIME OF LOCATION OF SURFACE WELL = 2.5



River Valley Survey, Inc.
110 East 3rd. Street, Suite 213
Rifle, Colorado 81650
Ph: 970-379-7846

Project: McLin C Pad

Proj. No. 06001-33C

Field Date: 1-05-12

Scale: 1"= 1000'

Date: 01-27-12

Sheet: As Drilled

As Drilled Location Plat
Prepared For Antero Resources

Situate In:
NE1/4SE1/4 Section 13, T6S., R. 92 W.
of the 6th P.M., Garfield County,
Colorado

