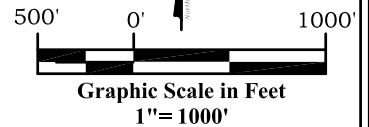
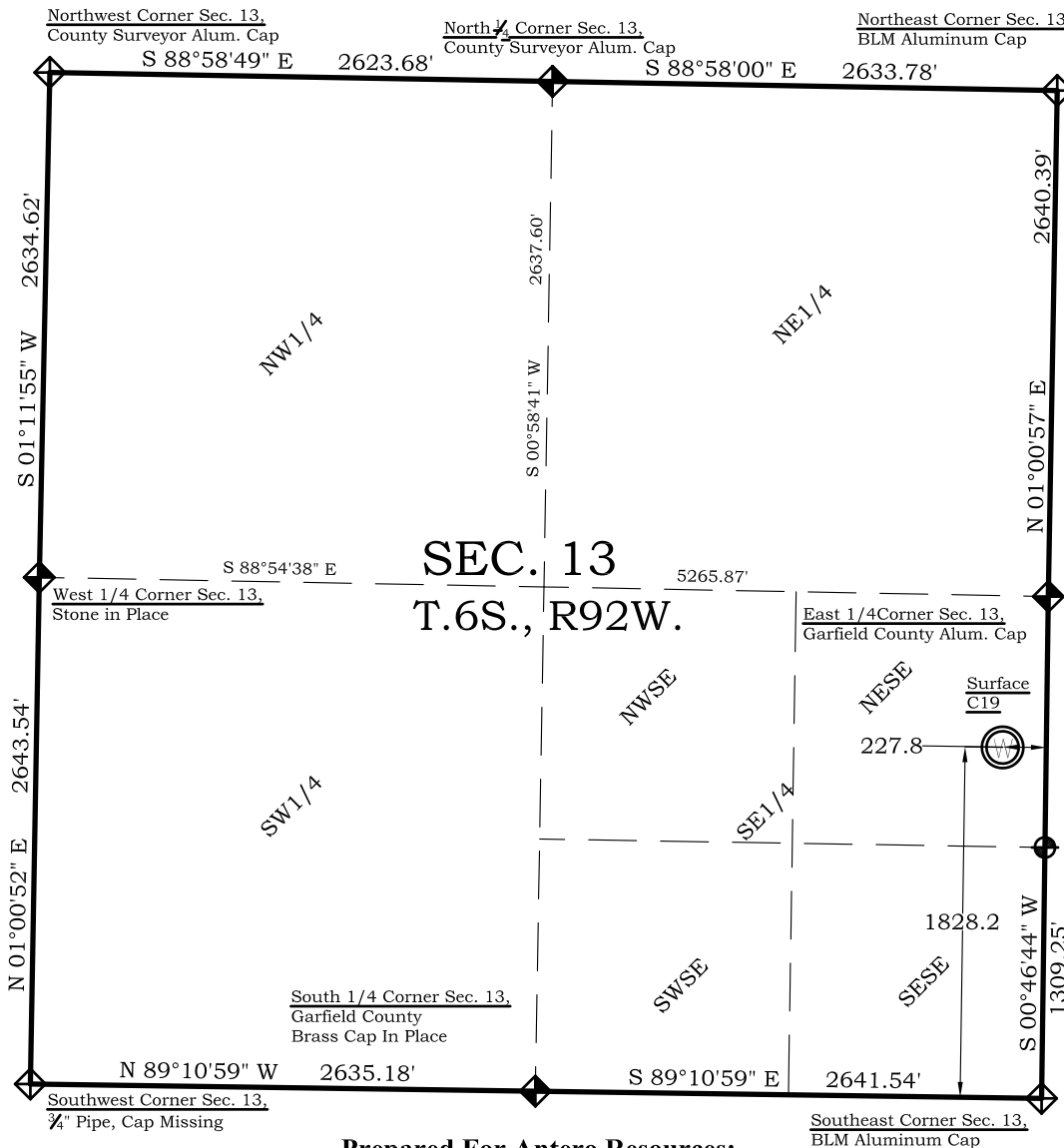


# As Drilled Well Location Plat

## McLin C19

### Section 13, Township 6 South, Range 92 West



#### Legend

- ◈ - Field Surveyed Section Corner
- ◈ - Field Surveyed Quarter Corner
- ⊙ - Calculated Section Corner Location
- ⊕ - Field Surveyed 1/6 Corner

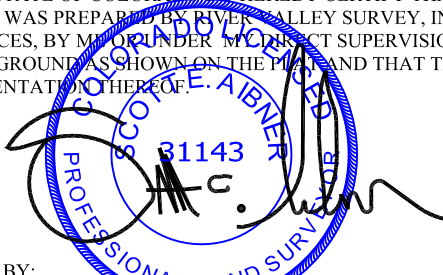
#### Surface: McLin C19

1828' FSL  
 228' FEL  
 Gnd El= 5725.6  
**NAD83**  
 Lat: 39.525056608°N  
 Long: 107.607158404°W  
**NAD27**  
 Lat: 39.525075999°N  
 Long: 107.606545394°W  
 UTM 13 NORTH  
**NAD 1983**  
 NORTHING  
 14364444.206  
 EASTING  
 905197.490

**Prepared For Antero Resources:**  
**As Drilled McLin C19 Well Situate in The NE 1/4 SE 1/4**  
**Section 13, Township 6 South, Range 92 West of the 6 th.**  
**Principal Meridian, County of Garfield, State of Colorado**

#### SURVEYOR'S CERTIFICATE

I, SCOTT E. AIBNER, A REGISTERED LAND SURVEYOR, LICENSED UNDER THE LAWS OF THE STATE OF COLORADO DO HEREBY CERTIFY THAT THE SURVEY SHOWN HEREON WAS PREPARED BY RIVER VALLEY SURVEY, INC., FOR ANTERO RESOURCES, BY MEANS OF MY DIRECT SUPERVISION AND HAS BEEN STAKED ON THE GROUND AS SHOWN ON THE PLAT AND THAT THIS PLAT IS A TRUE REPRESENTATION THEREOF.

BY:   
 SCOTT E. AIBNER, COLORADO REG. NO. 31143

#### Notes:

- LATITUDE AND LONGITUDE COORDINATES ARE DIFFERENTIALLY CORRECTED AND BASED ON PUBLISHED NGS CONTROL STATION "WDP-5". SYSTEM: UTM ZONE: 13 NORTH DATUM: NAD 1983 (CONUS)
- ELEVATIONS ARE BASED ON NAVD OF 1983.
- ALL BOTTOM AND TOP HOLE LOCATIONS ARE MEASURED 90 DEGREES FROM SECTION LINE.
- USGS QUADRANGLE MAP "SILT COLORADO".
- CURRENT SURFACE LAND USE: HAY FIELD.
- PDOP AT THE TIME OF LOCATION OF SURFACE WELL = 2.5



**River Valley Survey, Inc.**  
 110 East 3rd. Street, Suite 213  
 Rifle, Colorado 81650  
 Ph: 970-379-7846

<b>Project:</b> McLin C Pad	<b>Proj. No.</b> 06001-33C
<b>Field Date:</b> 1-05-12	<b>Scale:</b> 1"= 1000'
<b>Date:</b> 01-27-12	<b>Sheet:</b> As Drilled

**As Drilled Location Plat**  
**Prepared For Antero Resources**  
**Situate In:**  
 NE 1/4 SE 1/4 Section 13, T6S., R. 92 W.  
 of the 6th P.M., Garfield County,  
 Colorado

