

T9N, R61W, 6th P.M.

EOG RESOURCES, INC.

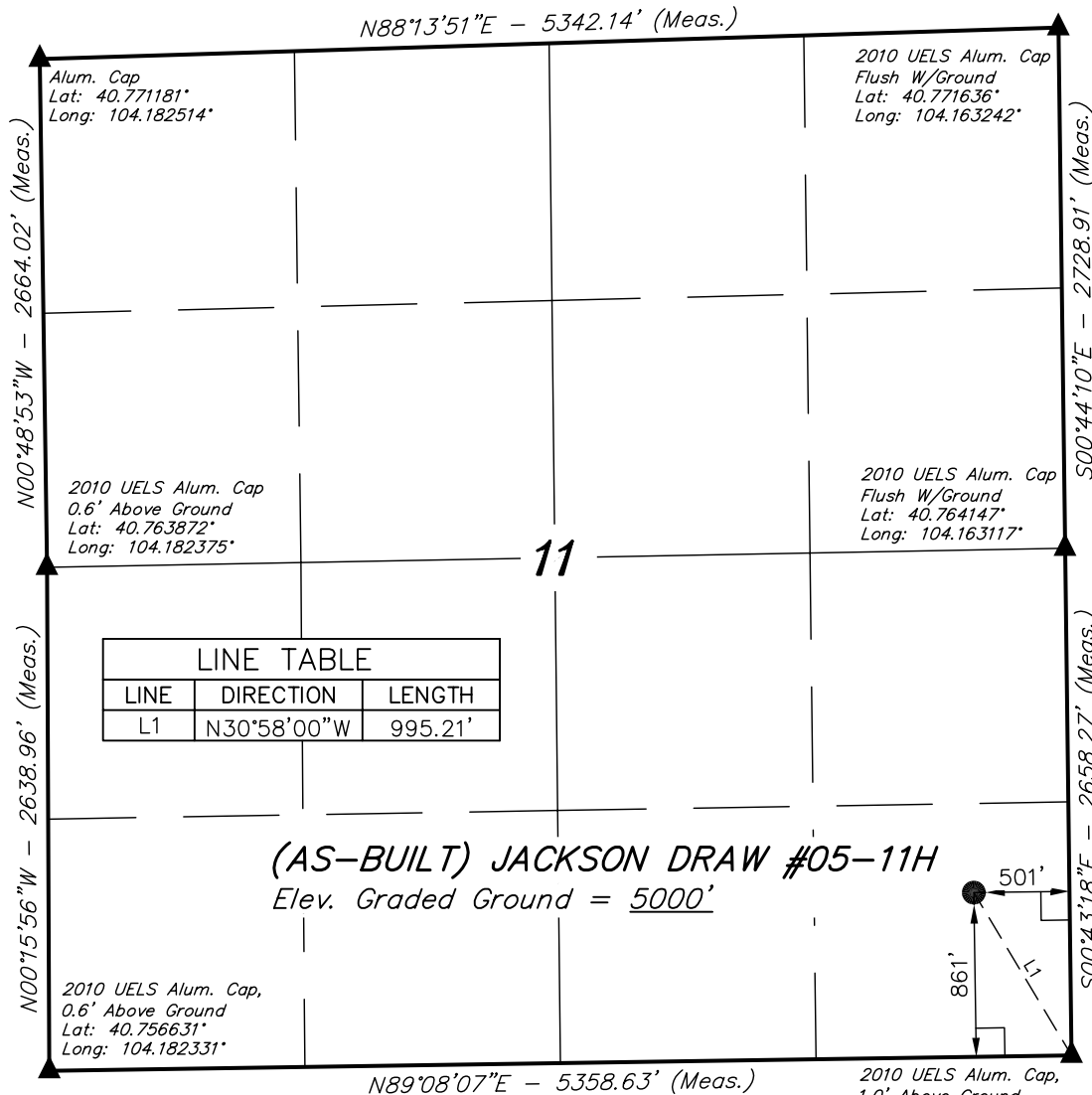
Well location, (AS-BUILT) JACKSON DRAW #05-11H, located as shown in the SE 1/4 SE 1/4 of Section 11, T9N, R61W, 6th P.M., Weld County, Colorado.

BASIS OF ELEVATION

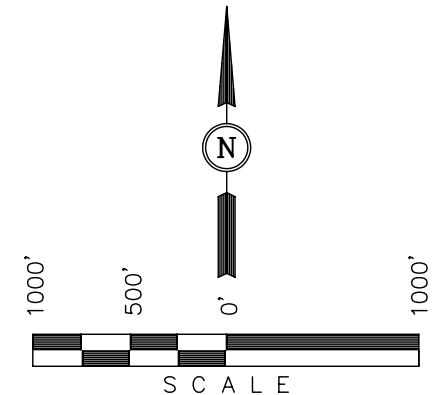
SPOT ELEVATION LOCATED AT THE NORTHEAST CORNER OF SECTION 2, T9N, R61W, 6th P.M. TAKEN FROM THE GROVER SOUTH, QUADRANGLE, COLORADO, WELD COUNTY, 7.5 MINUTE QUAD (TOPOGRAPHIC MAP) PUBLISHED BY THE UNITED STATES DEPARTMENT OF THE INTERIOR, GEOLOGICAL SURVEY. SAID ELEVATION IS MARKED AS BEING 5043 FEET.

BASIS OF BEARINGS

BASIS OF BEARINGS IS A G.P.S. OBSERVATION.



LINE TABLE		
LINE	DIRECTION	LENGTH
L1	N30°58'00"W	995.21'



CERTIFICATE

THIS IS TO CERTIFY THAT THE ABOVE PLAT WAS PREPARED FROM FIELD NOTES OF ACTUAL SURVEYS MADE BY ME OR UNDER MY SUPERVISION AND THAT THE SAME ARE TRUE AND CORRECT TO THE BEST OF MY KNOWLEDGE AND BELIEF.

REGISTERED LAND SURVEYOR
REGISTRATION NO. 17492
STATE OF COLORADO
01-03-12

UINTAH ENGINEERING & LAND SURVEYING
85 SOUTH 200 EAST - VERNAL, UTAH 84078
(435) 789-1017

LEGEND:

- └─ = 90° SYMBOL
- = PROPOSED WELL HEAD.
- ▲ = SECTION CORNERS LOCATED.

NAD 83 (AS-BUILT SURFACE LOCATION)	
LATITUDE	= 40°45'33.11" (40.759197)
LONGITUDE	= 104°09'53.43" (104.164842)
NAD 27 (AS-BUILT SURFACE LOCATION)	
LATITUDE	= 40°45'33.16" (40.759211)
LONGITUDE	= 104°09'51.62" (104.164339)
STATE PLANE NAD 83	
N: 1522205.41	E: 3369871.11
STATE PLANE NAD 27	
N: 522203.86	E: 2370020.40

SCALE 1" = 1000'	DATE SURVEYED: 12-22-11	DATE DRAWN: 01-03-12
PARTY L.S. J.I.	REFERENCES G.L.O. PLAT	
WEATHER COOL	FILE EOG RESOURCES, INC.	