
CHEVRON - MID-CONTINENT EBIZ

MB LARSEN C1125

Rio Blanco County , Colorado

Plug to Abandon Service

24-Jan-2012

Job Site Documents

The Road to Excellence Starts with Safety

Sold To #: 338668	Ship To #: UNKNOWN	Quote #:	Sales Order #: 9229275
Customer: CHEVRON - MID-CONTINENT EBIZ	Customer Rep: JEFF		
Well Name: MB LARSEN	Well #: C1125	API/UWI #:	
Field:	City (SAP): UNKNOWN	County/Parish: Rio Blanco	State: Colorado
Contractor: WORKOVER	Rig/Platform Name/Num: Workover		
Job Purpose: Plug to Abandon Service			
Well Type: Development Well	Job Type: Plug to Abandon Service		
Sales Person: SPENCER, WESTON	Srvc Supervisor: DEAN, MARK	MBU ID Emp #: 454214	

Job Personnel

HES Emp Name	Exp Hrs	Emp #	HES Emp Name	Exp Hrs	Emp #	HES Emp Name	Exp Hrs	Emp #
DEAN, MARK Christophe	9	454214	ELDER, DENNIS Ray	9	505202	ESTEP, KENNETH	9	214387

Equipment

HES Unit #	Distance-1 way	HES Unit #	Distance-1 way	HES Unit #	Distance-1 way	HES Unit #	Distance-1 way

Job Hours

Date	On Location Hours	Operating Hours	Date	On Location Hours	Operating Hours	Date	On Location Hours	Operating Hours
01-24-2012	9	9						

TOTAL Total is the sum of each column separately

Job

Formation Name	Top	Bottom	Form Type	Job depth MD	Water Depth	Perforation Depth (MD)	Job Times	Date	Time	Time Zone
			BHST	4158 ft			Called Out	24 - Jan - 2012	03:00	MST
							On Location	24 - Jan - 2012	08:00	MST
							Job Started	24 - Jan - 2012	10:43	MST
							Job Completed	24 - Jan - 2012	12:50	MST
							Departed Loc	24 - Jan - 2012	14:00	MST

Well Data

Description	New / Used	Max pressure psig	Size in	ID in	Weight lbm/ft	Thread	Grade	Top MD ft	Bottom MD ft	Top TVD ft	Bottom TVD ft
7" Production	Unknown		7.	6.366	23.			.	5000.		
2.875 Tubing	Unknown		2.875	2.441	6.5		N-80	.	3350.		

Sales/Rental/3rd Party (HES)

Description	Qty	Qty uom	Depth	Supplier
SUGAR - GRANULATED	20	LB		

Tools and Accessories

Type	Size	Qty	Make	Depth	Type	Size	Qty	Make	Depth	Type	Size	Qty	Make
Guide Shoe					Packer					Top Plug			
Float Shoe					Bridge Plug					Bottom Plug			
Float Collar					Retainer					SSR plug set			
Insert Float										Plug Container			
Stage Tool										Centralizers			

Miscellaneous Materials

Gelling Agt	Conc	Surfactant	Conc	Acid Type	Qty	Conc	%
Treatment Fld	Conc	Inhibitor	Conc	Sand Type	Size	Qty	

Fluid Data

Stage/Plug #: 1	Fluid #	Stage Type	Fluid Name	Qty	Qty uom	Mixing Density lbm/gal	Yield ft ³ /sk	Mix Fluid Gal/sk	Rate bbl/min	Total Mix Fluid Gal/sk
-----------------	---------	------------	------------	-----	---------	------------------------	---------------------------	------------------	--------------	------------------------

1	Fresh Water		15	bbl	8.33	.0	.0	.0	
2	PlugCem	PLUGCEM (TM) SYSTEM (452969)	50	sacks	16.0	1.12	4.76		4.76
	4.76 Gal	FRESH WATER							
3	Water Displacement		14.5	bbl	8.33	.0	.0	.0	
Calculated Values		Pressures		Volumes					
Displacement	15.12	Shut In: Instant		Lost Returns	0	Cement Slurry	9.97	Pad	
Top Of Cement	3904 ft	5 Min		Cement Returns	6	Actual Displacement	14.5	Treatment	
Frac Gradient		15 Min		Spacers		Load and Breakdown		Total Job	54
Rates									
Circulating	2	Mixing	2	Displacement	3	Avg. Job	2		
Cement Left In Pipe	Amount	0 ft	Reason	Shoe Joint					
Frac Ring # 1 @	ID	Frac ring # 2 @	ID	Frac Ring # 3 @	ID	Frac Ring # 4 @	ID		
The Information Stated Herein Is Correct				Customer Representative Signature					

The Road to Excellence Starts with Safety

Sold To #: 338668	Ship To #: UNKNOWN	Quote #:	Sales Order #: 9229275
Customer: CHEVRON - MID-CONTINENT EBIZ		Customer Rep: JEFF	
Well Name: MB LARSEN	Well #: C1125	API/UWI #:	
Field:	City (SAP): UNKNOWN	County/Parish: Rio Blanco	State: Colorado
Legal Description:			
Lat:		Long:	
Contractor: WORKOVER		Rig/Platform Name/Num: Workover	
Job Purpose: Plug to Abandon Service			Ticket Amount: \$11,662.49
Well Type: Development Well		Job Type: Plug to Abandon Service	
Sales Person: SPENCER, WESTON		Srv Supervisor: DEAN, MARK	MBU ID Emp #: 454214

Activity Description	Date/Time	Cht #	Rate bbl/ min	Volume bbl		Pressure psig		Comments
				Stage	Total	Tubing	Casing	
Call Out	01/24/2012 03:00							CREW CALLED OUT, GOT TRUCKS PREPPED FOR CONVOY AND JOB
Pre-Convoy Safety Meeting	01/24/2012 04:45							DISCUSSED CONVOY PROCEDURES, ROUTE, STOP, ROAD HAZARDS, TRAFFIC, WILDLIFE, WEATHER HAZARDS, EMERGENCY, AND BREAKDOWN PROCEDURES
Depart from Service Center or Other Site	01/24/2012 05:00							CREW DEPARTED IN CONVOY
Arrive At Loc	01/24/2012 07:00							MET CUSTOMER DOWN ROAD FROM LOCATION. CHAINS WERE REQUIRED FOR THE APPROACH.
Pre-Rig Up Safety Meeting	01/24/2012 08:00							ASSESED LOCATION. DISCUSSED RIG UP PROCEDURES, PINCH POINTS, LIFTING, HAMMERING, RED ZONES, AND SLIPS/TRIPS/FALLS (SPIKES REQUIRED)
Rig-Up Equipment	01/24/2012 08:15							RIGGED UP SAFELY AND TO BOTH HALLIBURTON AND CHEVRON STANDARDS
Activity Description	Date/Time	Cht #	Rate bbl/ min	Volume bbl		Pressure psig		Comments
				Stage	Total	Tubing	Casing	

Sold To # : 338668

Ship To # : UNKNOWN

Quote # :

Sales Order # :

9229275

SUMMIT Version: 7.3.013

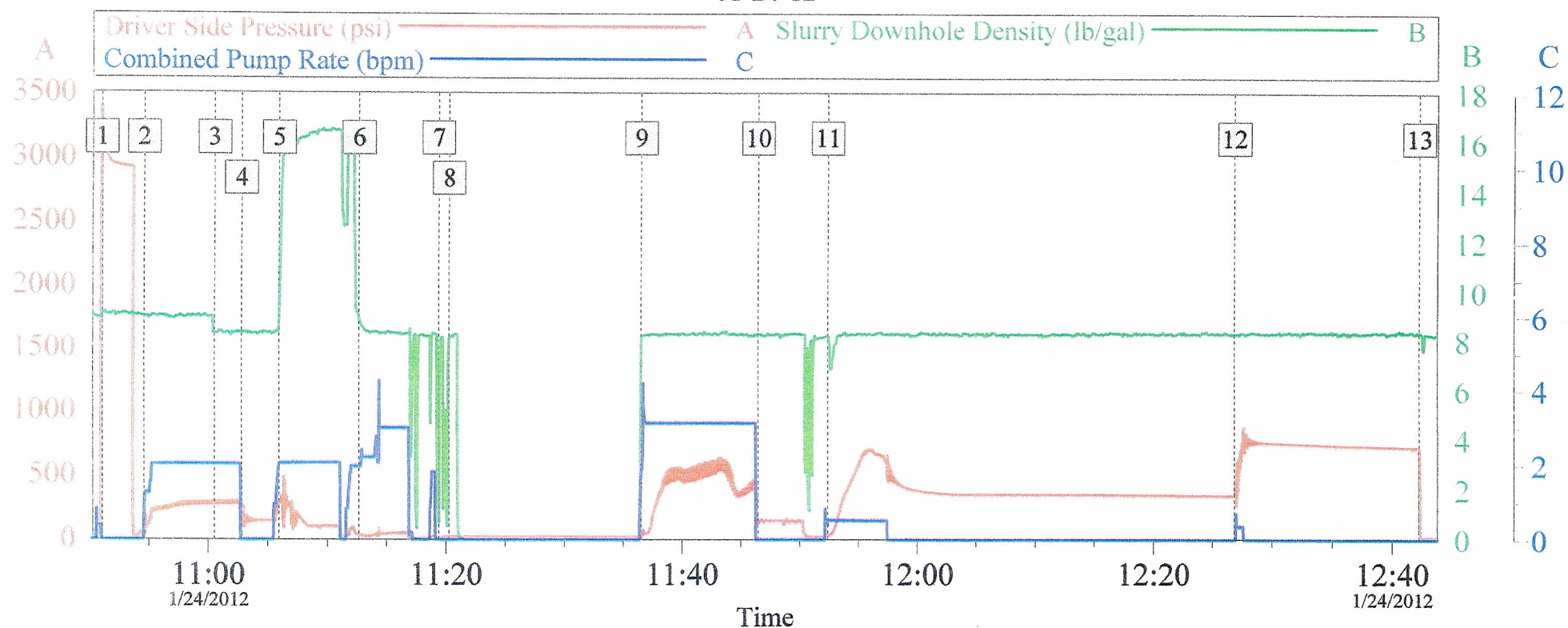
Tuesday, January 24, 2012 01:31:00

Pre-Job Safety Meeting	01/24/2012 10:30							DISCUSSED JOB PROCEDURE, RIG ISSUES, SAFETY ISSUES, HAZARDS WITH PRESSURE, EMERGENCY, AND EVACUATION PROCEDURES
Test Lines	01/24/2012 10:45							TESTED LINES TO 3000 PSI - LEAK IN PRESSURE GUAGE ON 3RD PARTY MANIFOLD
Resolving Safety Issues - Start Time	01/24/2012 10:46							SHUTDOWN & SECURED PRESSURE GUAGE CONNECTION
Test Lines	01/24/2012 10:48							TESTED LINES TO 3000 PSI (PRESSURE HELD)
Circulate Well	01/24/2012 10:55		2	10		220.0		PUMPED 10 BBL BRINE WATER
Pump Water	01/24/2012 11:00		2	5		270.0		PUMPED 5 BBL FRESH BEHIND
Shutdown	01/24/2012 11:03							SHUTDOWN AND STARTED MIXING CMT
Pump Cement	01/24/2012 11:06		2	9.97		250.0		PUMPED 9.97 BBL OF PLUGCEM 16# - Y: 1.12 - W: 4.76 (50SKS) (0.5% Halad 322 MIXED ON FLY)
Pump Displacement	01/24/2012 11:13		3	14.5		75.0		PUMPED A TOTAL OF 14.5 BBL OF FRESHWATER DISPLACEMENT
Shutdown	01/24/2012 11:19							SHUTDOWN & PULLED 10 STANDS (645')
Reverse Circ Well	01/24/2012 11:37		3	30		500.0		6 BBL CMT BACK TO PIT
Shutdown	01/24/2012 11:47							SWAPPED VALVES TO PRESSURE UP WELL
Pressure Up Well	01/24/2012 11:52						750.0	PRESSURED UP TO 750 PSI (HELD @ 450 PSI & HESITATED FOR 30 MINUTES)
Pressure Up Well	01/24/2012 12:29						750.0	PRESSURED UP TO 750 PSI (PRESSURE HELD FOR 20 MINUTES)
Other	01/24/2012 12:50							SHUT IN PRESSURE AND LEFT 2 INCH LO TORQ VALVE ON WELL.

Activity Description	Date/Time	Cht #	Rate bbl/ min	Volume bbl		Pressure psig		Comments
				Stage	Total	Tubing	Casing	
Post-Job Safety Meeting (Pre Rig-Down)	01/24/2012 12:55							DISCUSSED PPE & HAZARDS
Clean Lines	01/24/2012 13:00							WASHED PUMP & LINES TO PIT
Rig-Down Equipment	01/24/2012 13:05							RIGGED DOWN EQUIPMENT SAFELY
Pre-Convoy Safety Meeting	01/24/2012 13:50							DISCUSSED FATIGUE & SAFE DRIVING
Depart Location for Service Center or Other Site	01/24/2012 14:00							THANKYOU FOR CHOOSING HALLIBURTON!

CHEVRON 2.875 BALANCED PLUG JOB

01-24-12



Global Event Log

1	Test Lines	10:51:02	2	Circulate Well	10:54:35
3	Pump Water	11:00:32	4	Shutdown	11:02:48
5	Pump Cement	11:05:56	6	Pump Displacement	11:12:39
7	Shutdown	11:19:22	8	Pull 10 Stands	11:20:16
9	Reverse Out	11:36:32	10	Shutdown	11:46:28
11	Pressure Up Well	11:52:24	12	Pressure Up Well	12:26:52
13	Shut-In Pressure @ 25 Minutes	12:42:14			

Customer: Halliburton
Well Description: RTD

Job Date: 24-Jan-2012
UWI:

Sales Order #: 10:08:32

OptiCem v6.4.10
24-Jan-12 13:50