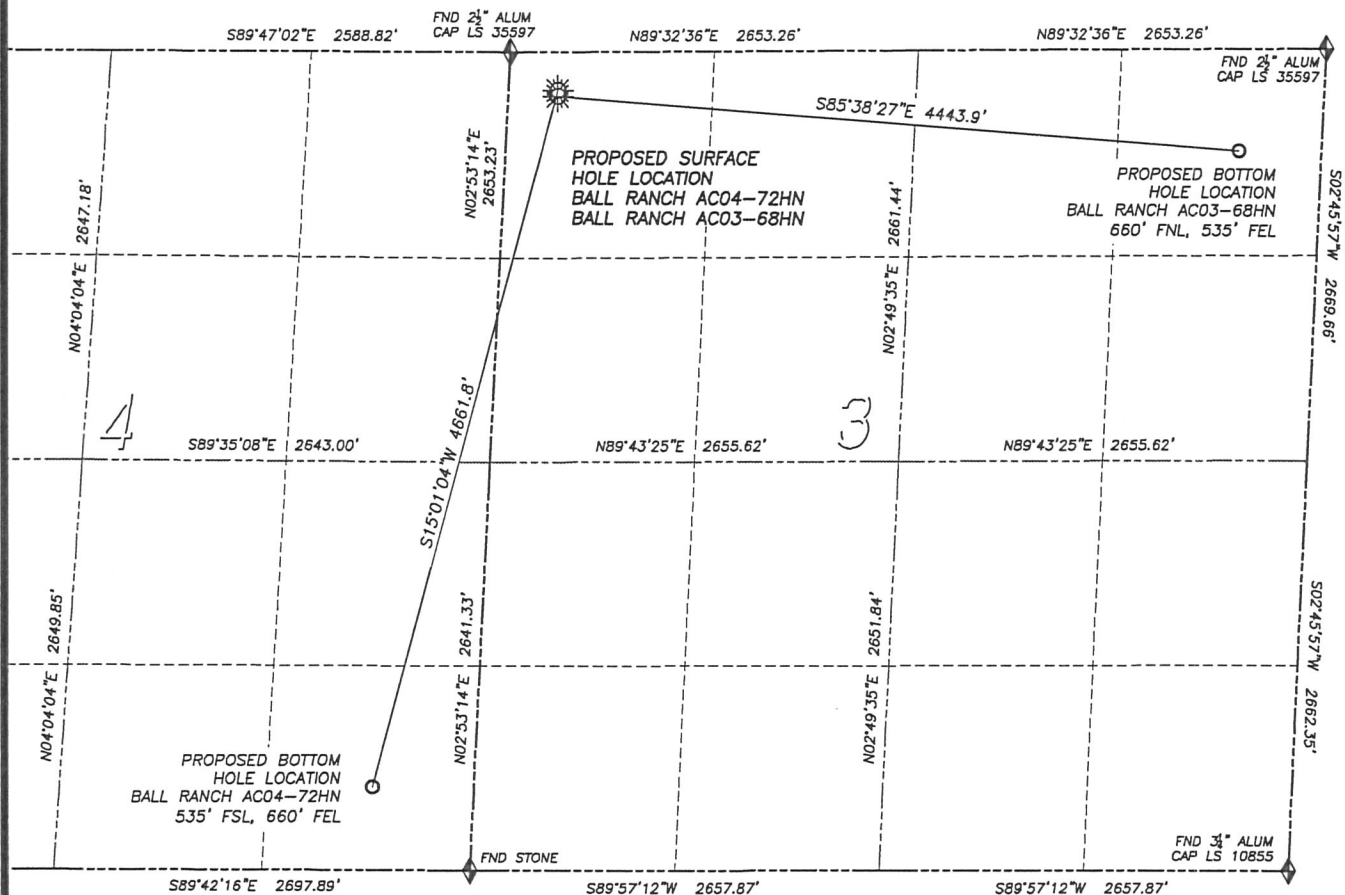


303 953 9841

MULTI-WELL PAD DIRECTIONAL LAYOUT
BALL RANCH AC04-72HN & BALL RANCH AC03-68HN

SECTION 3, TOWNSHIP 7 NORTH, RANGE 63 WEST OF THE 6TH PRINCIPAL MERIDIAN



NAD 83 LATITUDE AND LONGITUDE

BALL RANCH AC04-72HN

SURFACE HOLE:

LATITUDE: N40.60970°

LONGITUDE: W104.42989'

ELEVATION: 4890'

FOOTAGE: 250' FNL, 320' FWL

PDOP: 2.2

QTR/QTR: NW4/NW4

PROP LINE: 250'± NORTH

BOTTOM HOLE:

LATITUDE: N40.59734°

LONGITUDE: W104.43424'

FOOTAGE: 535' FSL, 660
OF SECTION 4

NAD 83 LATITUDE AND LONGITUDE

BALL RANCH AC03-68HN

SURFACE HOLE:

LATITUDE: N40.60960°

LONGITUDE: W104.42989°

ELEVATION: 4890'

FOOTAGE: 287' FNL, 322' FWL

PDOP: 2.2

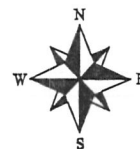
QTR/QTR: NW4/NW4

PROP LINE: 287±' NORTH






BOTTOM HOLE:

BOTTOM HOLE:
LATITUDE: N40.60867°

LATITUDE: N40.60887
LONGITUDE: W104.41394'



LEGEND

-  FOUND MONUMENT
 AS DESCRIBED
 PROPOSED WELL
 EXISTING WELL
 BOTTOM HOLE
 ABANDONED WELL

DALEY LAND SURVEYING, INC.

PARKER, CO. 80134

303 953 9841

MULTI-WELL PAD LOCATION DRAWING

BALL RANCH AC04-72HN & BALL RANCH AC03-68HN

SECTION 3, TOWNSHIP 7 NORTH, RANGE 63 WEST OF THE 6TH PRINCIPAL MERIDIAN

