
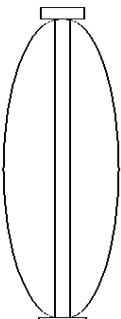
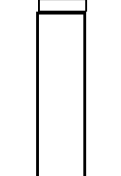
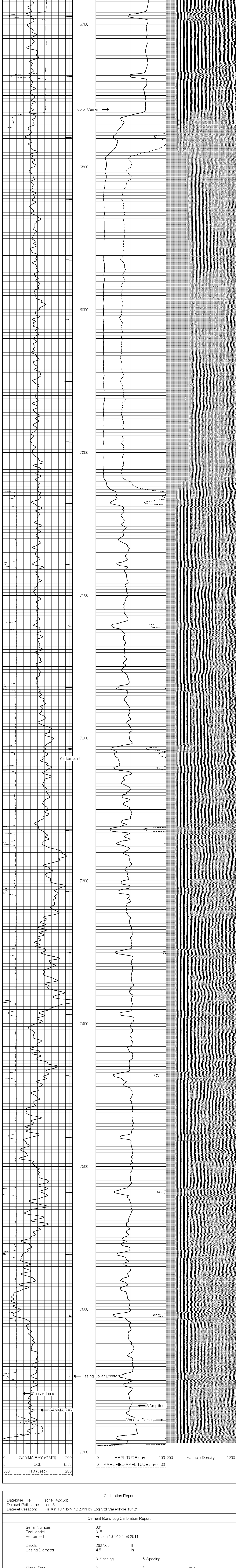


|  |  |  |  |
|--|--|--|--|
|    |  | <b>CEMENT BOND<br/>GAMMA RAY<br/>COLLAR CORRELATION LOG</b>  |  |
| <b>Company</b> SUNDANCE ENERGY INC.<br><b>Well</b> SCHELL 42-6<br><b>Field</b> WATTENBERG<br><b>County</b> WELD<br><b>State</b> COLORADO   |  | <b>Location:</b> APT # : 05-13-3346-100<br>SHL 195' FILL & 1180' FEL IN/ENE<br>BHL 2009' FILL & 883' FEL SENE<br>SEC 6 T1MP 3N1 RGE 67W/<br>Permanent Datum GROUND LEVEL Elevation 4916<br>Log Measured From WELLY BUSHING<br>Colling Measured From WELLY BUSHINGS Elevation K.B. 4023<br>D.F. 4027<br>O.L. 4010 |  |
| <b>Date</b> 10-JUNE-2011<br><b>Depth</b> 7776<br><b>Depth</b> 7703<br><b>Bottom</b> 7686<br><b>Top Log Interval</b> 6650<br><b>Open Hole Size</b> 7.78<br><b>Log Interval</b> 7.78<br><b>WATER</b><br><b>Depth / Viscosity</b><br><b>Max. Recorded Temp.</b> NOT RECORDED<br><b>Estimated Cement Top</b> 67'50<br><b>Time Well Ready /</b> ---<br><b>Time Logger on Bottom</b> 3:45:50<br><b>Equipment Number</b> 346580<br><b>Log Number</b> BROUGHTON<br><b>Recorded By</b> HAYES<br><b>Witnessed By</b> MR. DEAN ROGERS   |  | <b>Boardable Record</b><br><b>Run Number</b> Bit From To<br><b>Size</b> Weight From To<br><b>Log</b> Size Weight From To<br><b>Top</b> 699<br><b>Bottom</b> 699<br><b>Surface</b> SURFACE<br><b>Depth</b> TOTAL DEPTH  |  |
| <<< Fold Here >>>  |  |  |  |
| All interpretations are opinions based on inferences from electrical or other measurements and we cannot and do not guarantee the accuracy or correctness of any interpretation, and we shall not, except in the case of gross or willful negligence on our part, be liable or responsible for any loss, costs, damages, or expenses incurred or sustained by anyone resulting from any interpretation made by any of our officers, agents or employees. These interpretations are also subject to our general terms and conditions set out in our current Price Schedule. |  |  |  |
| <b>Comments</b><br><br>LOG CORRELATED TO HSI, CD, CN LOG<br>DATED 05-JUNE-2011<br><br>LOG SPLIT FOR CORRELATION PURPOSES<br>LOGGED UNDER 1500 PSI  |  |  |  |

| Sensor | Offset (ft) | Schematic   | Description        | Len (ft) | OD (in) | Wt (lb) |
|--------|-------------|---|--------------------|----------|---------|---------|
|        |             |   | CENT-A (1)         | 3.00     | 1.69    | 10.00   |
| CCL    | 13.46       |  | CCL-TEKCO (TEK101) | 1.81     | 2.75    | 10.00   |

[illegible]

|     |                  |       |   |                          |     |     |                  |      |
|-----|------------------|-------|---|--------------------------|-----|-----|------------------|------|
| 0   | GAMMA RAY (GAPI) | 200   | 0 | AMPLITUDE (mV)           | 100 | 200 | Variable Density | 1200 |
| 5   | CCL              | -0.25 | 0 | AMPLIFIED AMPLITUDE (mV) | 30  |     |                  |      |
| 300 | TT3 (usec)       | 200   |   |                          |     |     |                  |      |



|                              |                          |         |    |
|------------------------------|--------------------------|---------|----|
| Calibrated Amplitude:        | 81.1961                  | 81.1961 | mV |
| Reading at Signal Zero:      | 0.04                     | 0       | V  |
| Reading in Free Pipe:        | 2.35164                  | 2.5     | V  |
| Gain:                        | 33.8271                  | 31.2784 |    |
| Offset:                      | 1.64692                  | 3       |    |
| Gamma Ray Calibration Report |                          |         |    |
| Serial Number:               | t001                     |         |    |
| Tool Model:                  | s_t001                   |         |    |
| Performed:                   | Sun Jun 13 13:33:21 1993 |         |    |
| Calibrator Value:            | 1.0                      | GAPI    |    |
| Factor:                      | 1.0                      |         |    |