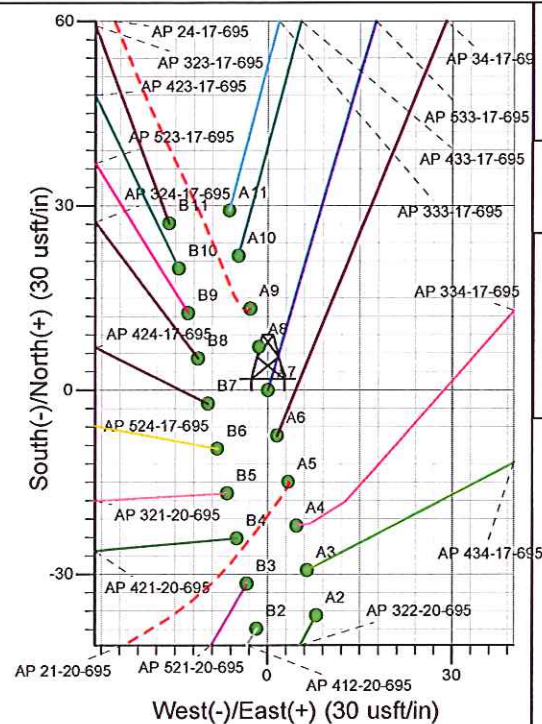
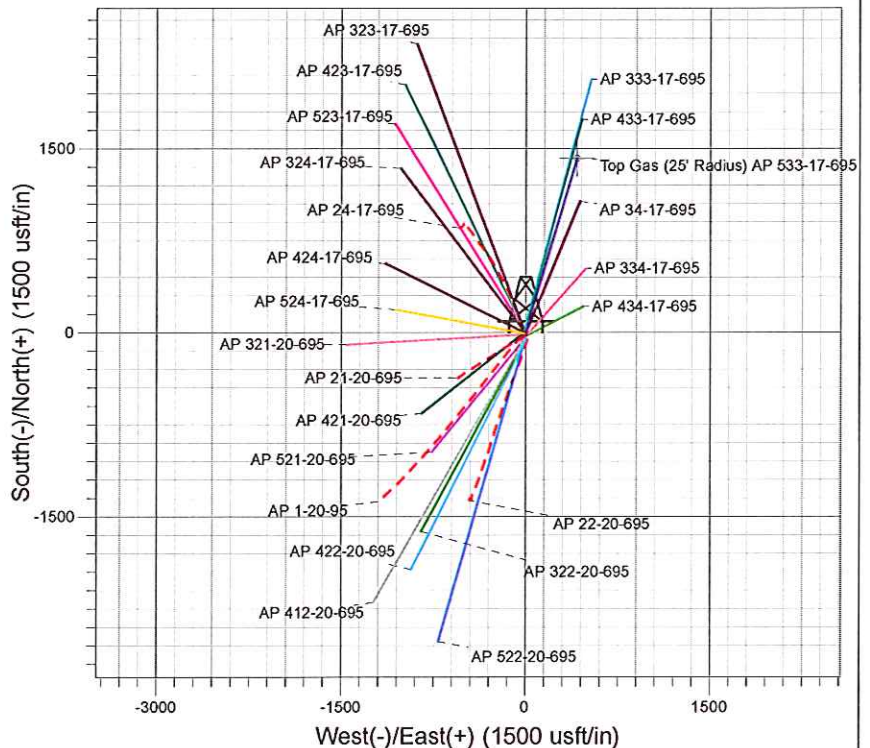
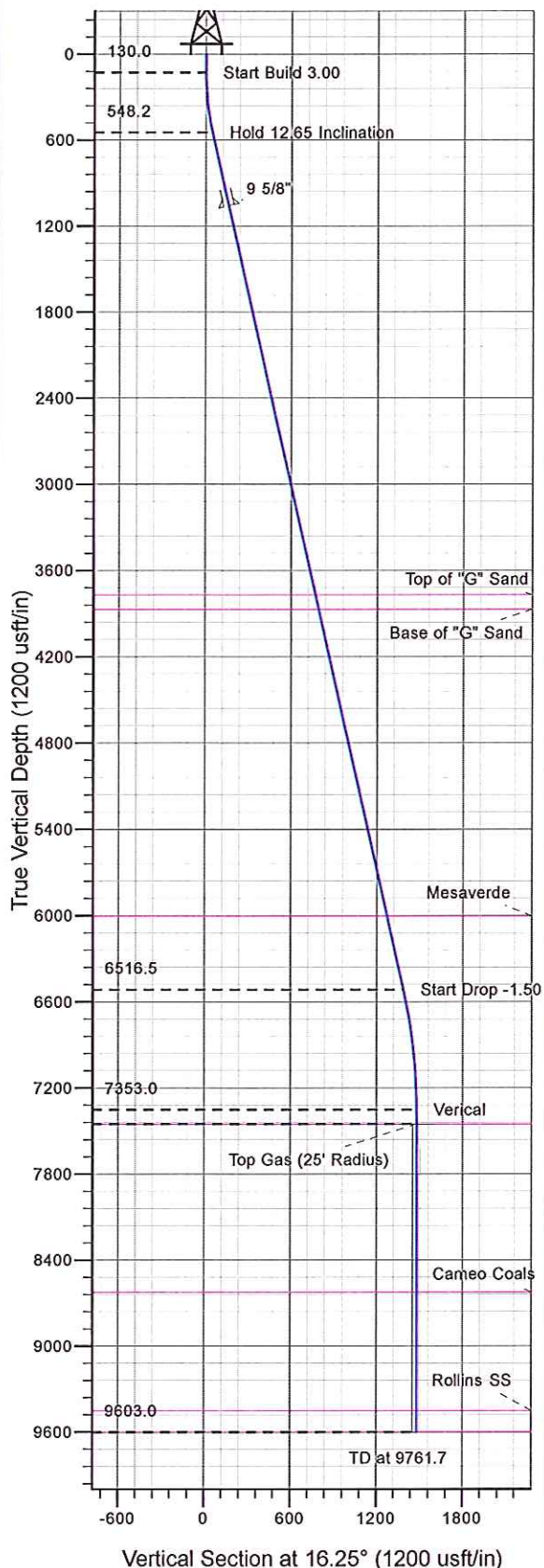




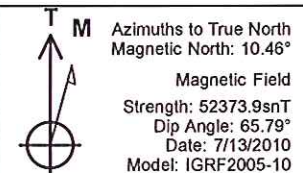
Well Name: AP 533-17-695
Surface Location: AP 21-20-695 Pad
North American Datum 1983 , US State Plane 1983 , Colorado Central Zone
Ground Elevation: 6909.0

+N/-S	+E/-W	Northing	Easting	Latitude	Longitude	Slot
0.0	0.0	1623273.80	2288339.30	39° 31' 3.131 N	108° 1' 22.523 W	A7

KELLY BUSHING @ 6935.0usft (Nabors 574 (26' RKB) kjs)



Project: AP 20-06S-095W
Site: AP 21-20-695 Pad
Well: AP 533-17-695
Design #1 13Jul10 kjs



ANNOTATIONS

TVD	MD	Inc	Azi	+N/-S	+E/-W	VSec	Departure	Annotation
130.0	130.0	0.00	0.00	0.0	0.0	0.0	0.0	Start Build 3.00
548.2	551.7	12.65	16.25	44.5	13.0	46.4	46.4	Hold 12.65 Inclination
6516.5	6668.4	12.65	16.25	1330.5	387.9	1385.9	1385.9	Start Drop -1.50
7353.0	7511.7	0.00	0.00	1419.5	413.9	1478.6	1478.6	Verical
7453.0	7611.7	0.00	0.00	1419.5	413.9	1478.6	1478.6	Top Gas
9603.0	9761.7	0.00	0.00	1419.5	413.9	1478.6	1478.6	TD at 9761.7

PICEANCE VLY NAD 83

AP 20-06S-095W

AP 21-20-695 Pad

AP 533-17-695 - Slot A7

Wellbore #1

Plan: Design #1 13Jul10 kjs

Standard Planning Report - Geographic

11 April, 2011

Williams
Planning Report - Geographic

Database:	Compass R5000 WIN AUTH	Local Co-ordinate Reference:	Well AP 533-17-695 - Slot A7
Company:	PICEANCE VLY NAD 83	TVD Reference:	KELLY BUSHING @ 6935.0usft (Nabors 574 (26' RKB) kjs)
Project:	AP 20-06S-095W	MD Reference:	KELLY BUSHING @ 6935.0usft (Nabors 574 (26' RKB) kjs)
Site:	AP 21-20-695 Pad	North Reference:	True
Well:	AP 533-17-695	Survey Calculation Method:	Minimum Curvature
Wellbore:	Wellbore #1		
Design:	Design #1 13Jul10 kjs		

Project	AP 20-06S-095W, Garfield County, CO, 20-06S-095W		
Map System:	US State Plane 1983	System Datum:	Mean Sea Level
Geo Datum:	North American Datum 1983		
Map Zone:	Colorado Central Zone		Using geodetic scale factor

Site	AP 21-20-695 Pad			
Site Position:		Northing:	1,623,258.80 usft	Latitude: 39° 31' 2.984 N
From:	Map	Easting:	2,288,342.20 usft	Longitude: 108° 1' 22.480 W
Position Uncertainty:	0.0 usft	Slot Radius:	13.200 in	Grid Convergence: -1.591 °

Well	AP 533-17-695 - Slot A7			
Well Position	+N/-S	0.0 usft	Northing:	1,623,273.80 usft
	+E/-W	0.0 usft	Easting:	2,288,339.30 usft
Position Uncertainty	0.0 usft		Wellhead Elevation:	Ground Level: 6,909.0 usft

Wellbore	Wellbore #1				
Magnetics	Model Name	Sample Date	Declination (°)	Dip Angle (°)	Field Strength (nT)
	IGRF2005-10	7/13/2010	10.462	65.789	52,374

Design	Design #1 13Jul10 kjs			
Audit Notes:				
Version:	Phase:	PLAN	Tie On Depth:	0.0
Vertical Section:	Depth From (TVD) (usft)	+N/-S (usft)	+E/-W (usft)	Direction (°)
	0.0	0.0	0.0	16.25

Plan Sections										
Measured Depth (usft)	Inclination (°)	Azimuth (°)	Vertical Depth (usft)	+N/-S (usft)	+E/-W (usft)	Dogleg Rate (°/100usft)	Build Rate (°/100usft)	Turn Rate (°/100usft)	TFO (°)	Target
0.0	0.00	0.00	0.0	0.0	0.0	0.00	0.00	0.00	0.000	
130.0	0.00	0.00	130.0	0.0	0.0	0.00	0.00	0.00	0.000	
551.7	12.65	16.25	548.2	44.5	13.0	3.00	3.00	0.00	16.254	
6,668.4	12.65	16.25	6,516.5	1,330.5	387.9	0.00	0.00	0.00	0.000	
7,511.7	0.00	0.00	7,353.0	1,419.5	413.9	1.50	-1.50	0.00	180.000	
7,611.7	0.00	0.00	7,453.0	1,419.5	413.9	0.00	0.00	0.00	0.000	Top Gas (25' Radius)
9,761.7	0.00	0.00	9,603.0	1,419.5	413.9	0.00	0.00	0.00	0.000	

Williams
Planning Report - Geographic

Database:	Compass R5000 WIN AUTH	Local Co-ordinate Reference:	Well AP 533-17-695 - Slot A7
Company:	PICEANCE VLY NAD 83	TVD Reference:	KELLY BUSHING @ 6935.0usft (Nabors 574 (26' RKB) kjs)
Project:	AP 20-06S-095W	MD Reference:	KELLY BUSHING @ 6935.0usft (Nabors 574 (26' RKB) kjs)
Site:	AP 21-20-695 Pad	North Reference:	True
Well:	AP 533-17-695	Survey Calculation Method:	Minimum Curvature
Wellbore:	Wellbore #1		
Design:	Design #1 13Jul10 kjs		

Planned Survey									
Measured Depth (usft)	Inclination (°)	Azimuth (°)	Vertical Depth (usft)	+N/-S (usft)	+E/-W (usft)	Map Northing (usft)	Map Easting (usft)	Latitude	Longitude
0.0	0.00	0.00	0.0	0.0	0.0	1,623,273.80	2,288,339.30	39° 31' 3.131 N	108° 1' 22.523 W
130.0	0.00	0.00	130.0	0.0	0.0	1,623,273.80	2,288,339.30	39° 31' 3.131 N	108° 1' 22.523 W
Start Build 3.00									
551.7	12.65	16.25	548.2	44.5	13.0	1,623,317.92	2,288,353.51	39° 31' 3.571 N	108° 1' 22.357 W
Hold 12.65 Inclination									
1,076.0	12.65	16.25	1,059.9	154.7	45.1	1,623,427.22	2,288,388.69	39° 31' 4.660 N	108° 1' 21.947 W
9 5/8"									
3,853.6	12.65	16.25	3,770.0	738.7	215.4	1,624,006.20	2,288,575.09	39° 31' 10.432 N	108° 1' 19.774 W
Top of "G" Sand									
3,956.1	12.65	16.25	3,870.0	760.2	221.7	1,624,027.56	2,288,581.97	39° 31' 10.645 N	108° 1' 19.694 W
Base of "G" Sand									
6,144.2	12.65	16.25	6,005.0	1,220.3	355.8	1,624,483.67	2,288,728.81	39° 31' 15.191 N	108° 1' 17.982 W
Mesaverde									
6,668.4	12.65	16.25	6,516.5	1,330.5	387.9	1,624,592.94	2,288,763.99	39° 31' 16.280 N	108° 1' 17.572 W
Start Drop -1.50									
7,511.7	0.00	0.00	7,353.0	1,419.5	413.9	1,624,681.20	2,288,792.40	39° 31' 17.160 N	108° 1' 17.241 W
Verical									
7,611.7	0.00	0.00	7,453.0	1,419.5	413.9	1,624,681.20	2,288,792.40	39° 31' 17.160 N	108° 1' 17.241 W
Top Gas - Approx. Top Gas									
8,783.7	0.00	0.00	8,625.0	1,419.5	413.9	1,624,681.20	2,288,792.40	39° 31' 17.160 N	108° 1' 17.241 W
Cameo Coals									
9,611.7	0.00	0.00	9,453.0	1,419.5	413.9	1,624,681.20	2,288,792.40	39° 31' 17.160 N	108° 1' 17.241 W
Rollins SS									
9,761.7	0.00	0.00	9,603.0	1,419.5	413.9	1,624,681.20	2,288,792.40	39° 31' 17.160 N	108° 1' 17.241 W
TD at 9761.7 - TD									

Design Targets									
Target Name - hit/miss target - Shape	Dip Angle (°)	Dip Dir. (°)	TVD (usft)	+N/-S (usft)	+E/-W (usft)	Northing (usft)	Easting (usft)	Latitude	Longitude
Top Gas (25' Radius) AF - plan hits target center - Circle (radius 25.0)	0.00	0.00	7,453.0	1,419.5	413.9	1,624,681.20	2,288,792.40	39° 31' 17.160 N	108° 1' 17.241 W

Casing Points					
Measured Depth (usft)	Vertical Depth (usft)	Name		Casing Diameter (in)	Hole Diameter (in)
1,076.0	1,059.9	9 5/8"		9.625	12.250

Williams
Planning Report - Geographic

Database:	Compass R5000 WIN AUTH	Local Co-ordinate Reference:	Well AP 533-17-695 - Slot A7
Company:	PICEANCE VLY NAD 83	TVD Reference:	KELLY BUSHING @ 6935.0usft (Nabors 574 (26' RKB) kjs)
Project:	AP 20-06S-095W	MD Reference:	KELLY BUSHING @ 6935.0usft (Nabors 574 (26' RKB) kjs)
Site:	AP 21-20-695 Pad	North Reference:	True
Well:	AP 533-17-695	Survey Calculation Method:	Minimum Curvature
Wellbore:	Wellbore #1		
Design:	Design #1 13Jul10 kjs		

Formations						
Measured Depth (usft)	Vertical Depth (usft)	Name	Lithology	Dip (°)	Dip Direction (°)	
3,853.6	3,770.0	Top of "G" Sand		0.000		
3,956.1	3,870.0	Base of "G" Sand		0.000		
6,144.2	6,005.0	Mesaverde		0.000		
7,611.7	7,453.0	Approx. Top Gas		0.000		
8,783.7	8,625.0	Cameo Coals		0.000		
9,611.7	9,453.0	Rollins SS		0.000		
9,761.7	9,603.0	TD		0.000		

Plan Annotations					
Measured Depth (usft)	Vertical Depth (usft)	Local Coordinates			
		+N/-S (usft)	+E/-W (usft)	Comment	
130.0	130.0	0.0	0.0	Start Build 3.00	
551.7	548.2	44.5	13.0	Hold 12.65 Inclination	
6,668.4	6,516.5	1,330.5	387.9	Start Drop -1.50	
7,511.7	7,353.0	1,419.5	413.9	Vertical	
7,611.7	7,453.0	1,419.5	413.9	Top Gas	
9,761.7	9,603.0	1,419.5	413.9	TD at 9761.7	