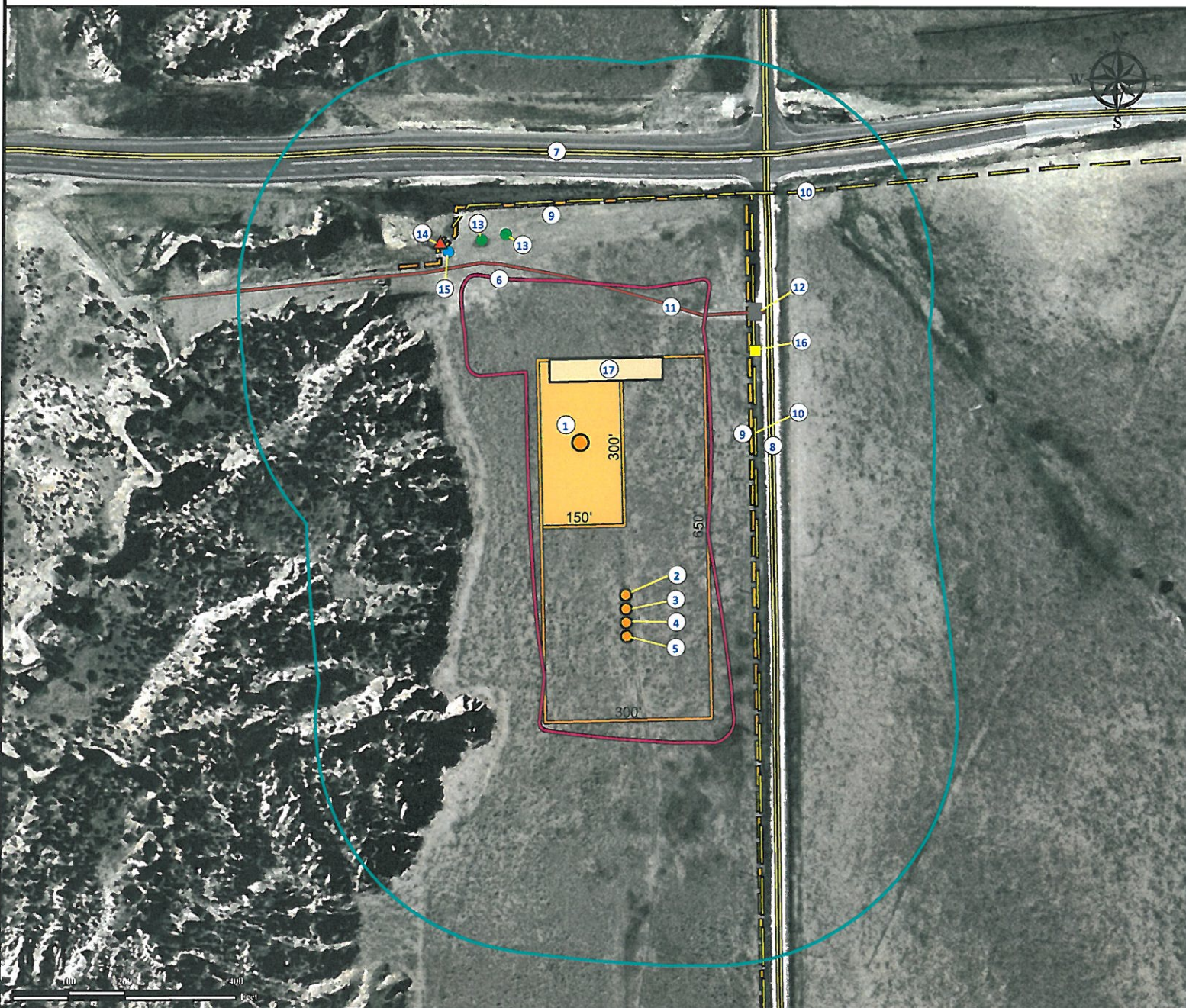


# Location Drawing

## PONDEROSA 41-17 1V

**NE¼ NE¼ SECTION 17, TOWNSHIP 14 SOUTH, RANGE 64 WEST OF THE 6TH PRINCIPAL MERIDIAN**



1. Proposed Well PONDEROSA 41-17 1V.
2. Proposed Well PONDEROSA 41-17 2H.
3. Proposed Well #3.
4. Proposed Well #4.
5. Proposed Well #5.
6. Operational Disturbance Area.

7. CO Highway 94 is ±522' N.
8. S. Blaney Rd is ±344' E.
9. Fences are ±305' E and ±429' N.
10. Power Lines are ±315' E and ±434' N.
11. Private Road is ±287' NE.
12. Gate is ±391' NE.

13. Vent Pipe is ±395' NW and ±405' NW.
14. Radio Tower is ±436' NW.
15. Manhole Cover is ±418' NW.
16. Power Box is ±358' NE.
17. Proposed Facility is to be ±110' N.

### Legend

- |  |  |   |
|--|--|---|
| <span style="color: orange;">●</span> Proposed Well  | <span style="color: blue;">●</span> Manhole Cover  | <span style="border: 2px solid red; padding: 2px;"> </span> Disturbance Area                          |
| <span style="background-color: gray; border: 1px solid black; display: inline-block; width: 10px; height: 10px;"></span> Gate        | <span style="background-color: yellow; border: 1px solid black; display: inline-block; width: 20px; height: 10px;"></span> Proposed Facility | <span style="border-bottom: 2px dashed brown; width: 20px; display: inline-block;"></span> Fence      |
| <span style="background-color: yellow; border: 1px solid black; display: inline-block; width: 10px; height: 10px;"></span> Power Box | <span style="background-color: orange; border: 1px solid black; display: inline-block; width: 20px; height: 10px;"></span> Phase 1 Pad       | <span style="border-bottom: 2px solid green; width: 20px; display: inline-block;"></span> Power Line  |
| <span style="color: green;">●</span> Vent Pipe   | <span style="background-color: lightyellow; border: 1px solid black; display: inline-block; width: 20px; height: 10px;"></span> Phase 2 Pad  | <span style="border-bottom: 2px solid red; width: 20px; display: inline-block;"></span> Private Road  |
| <span style="color: red;">▲</span> Radio Tower   | <span style="border: 2px solid teal; display: inline-block; width: 20px; height: 10px;"></span> 400' Radius                                  | <span style="border-bottom: 2px solid black; width: 20px; display: inline-block;"></span> Public Road |

### Reference Location

\*\* All Measurements are Made from  
Reference Well PONDEROSA 41-17 1V\*\*

**Lat: 38.837039° Long: -104.573131° (NAD83)**  
**Elevation: 6505 Feet**

Surface Use: Rangeland



*Use our resources to find yours!*  
**[www.petro-fs.com](http://www.petro-fs.com)**  
**(303) 928-7128**

Field Date: 01/03/2012  
Drafting Date: 01/18/2012  
Drafter: KLM  
Checked By: BHF

Data Sources:  
- Aerial courtesy of NAIP (2009)

Prepared for:



**ULTRA RESOURCES, INC**