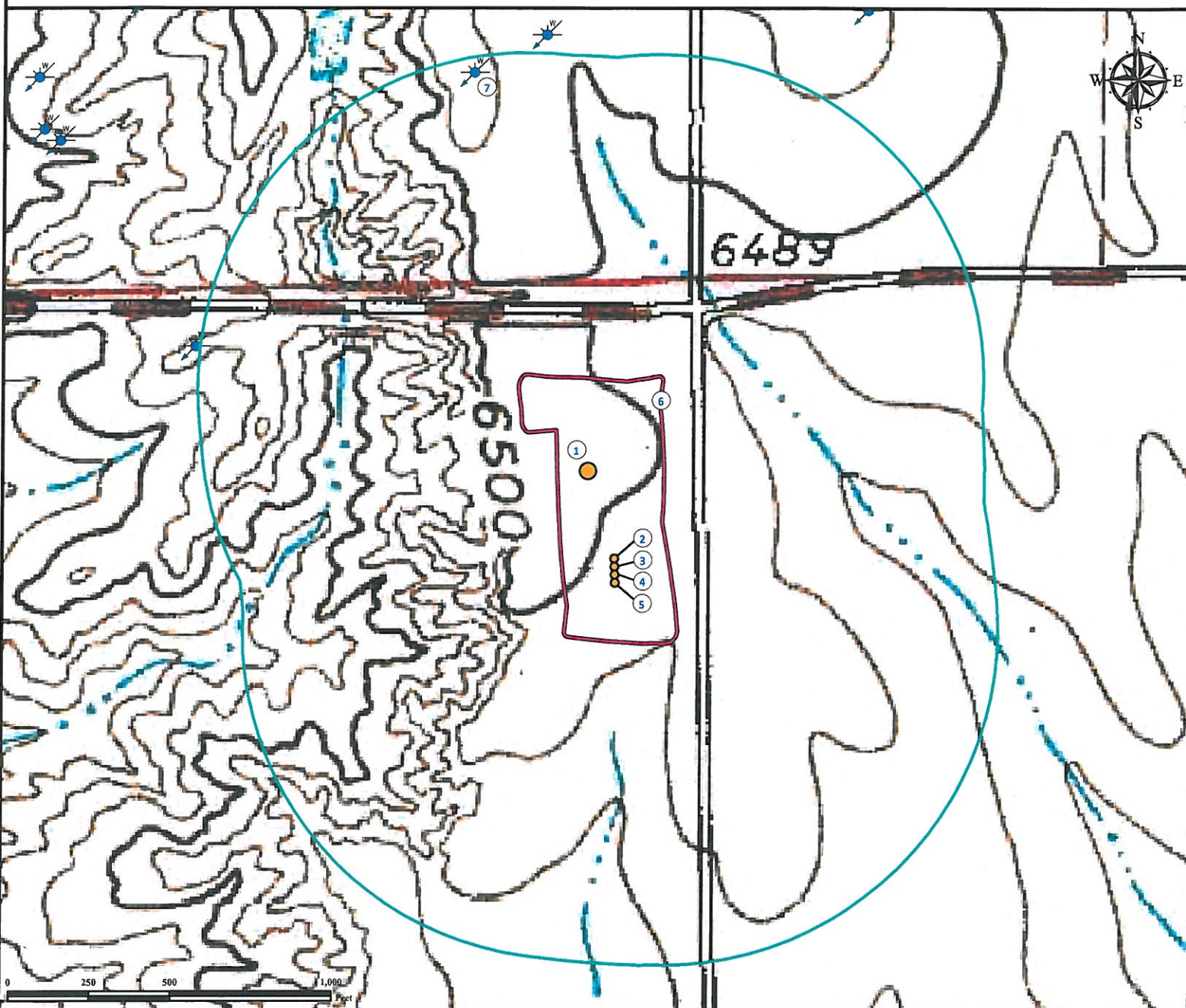


# Hydrology Map

## P O N D E R O S A 4 1 - 1 7 1 V

NE¼ NE¼ SECTION 17, TOWNSHIP 14 SOUTH, RANGE 64 WEST OF THE 6TH PRINCIPAL MERIDIAN



1. Proposed Well PONDEROSA 41-17 1V.
2. Proposed Well PONDEROSA 41-17 2H.
3. Proposed Well #3.
4. Proposed Well #4.
5. Proposed Well #5.
6. Operational Disturbance Area.

7. Water Well (Permit #96215) is  $\pm 1290'$  NW.

### Legend

- |   |               |   |                  |
|---|---------------|---|------------------|
|  | Proposed Well |  | Disturbance Area |
|  | Water Well    |  | 1000' Radius     |

### Reference Location

\*\* All Measurements are Made from  
Reference Well  
PONDEROSA 41-17 1V\*\*

Lat: 38.837039° Long: -104.573131° (NAD83)  
Elevation: 6505 Feet



Use our resources to find yours!  
[www.petro-fs.com](http://www.petro-fs.com)  
(303) 928-7128

Field Date: 01/03/2012  
Drafting Date: 01/18/2012  
Drafter: KLM  
Checked By: BHF

Data Sources:  
- TOPO courtesy of USGS  
- Water Wells courtesy of CDOWR

Prepared for:



ULTRA  
RESOURCES, INC