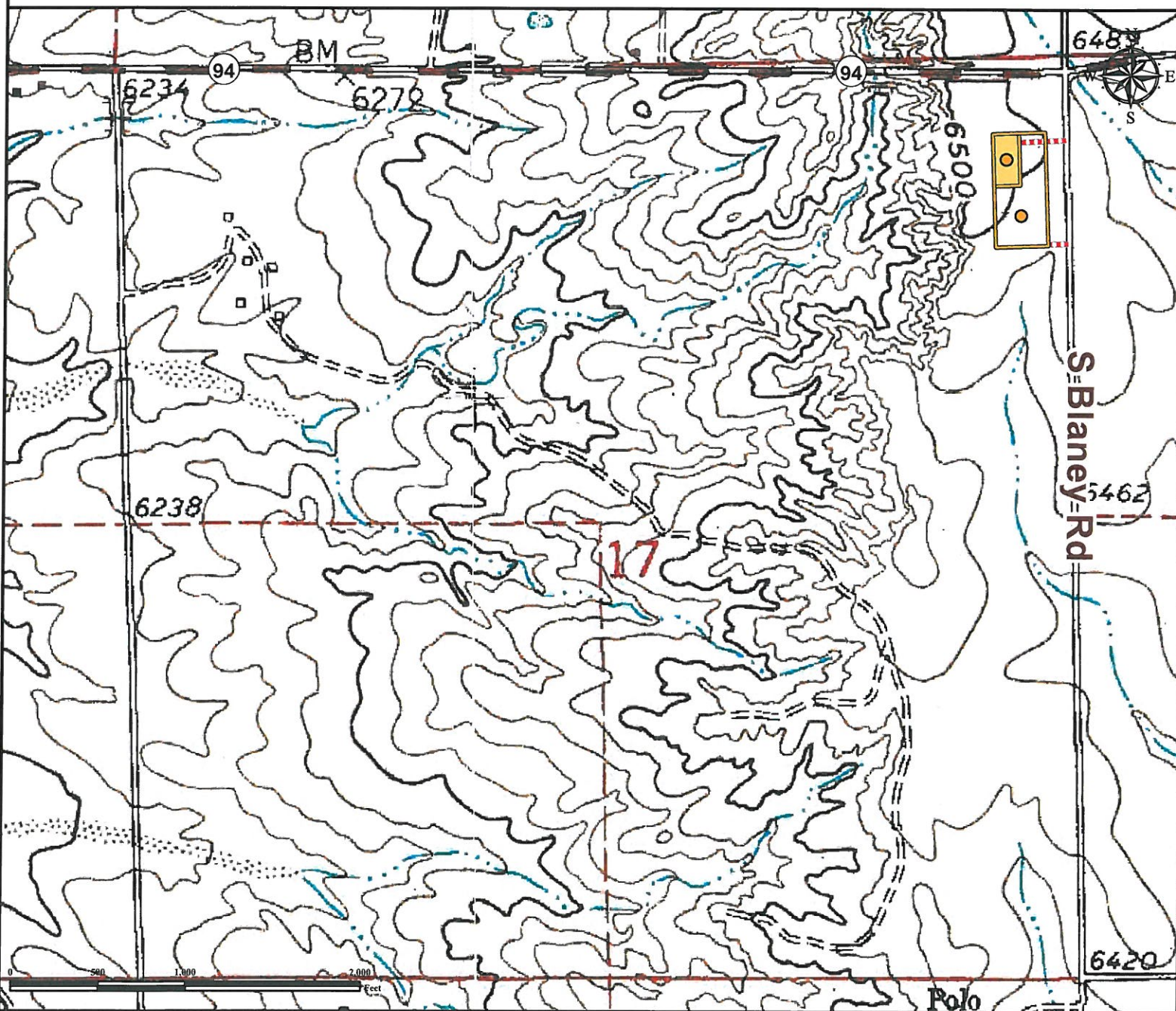


Access Road Map

P O N D E R O S A 4 1 - 1 7 1 V

NE¼ NE¼ SECTION 17, TOWNSHIP 14 SOUTH, RANGE 64 WEST OF THE 6TH PRINCIPAL MERIDIAN



From Colorado Springs, CO: Start at the Exit 139 (US Highway 24) of I25 South Go east on US Highway 24, Drive ±4.6 miles.

Turn Left on N Powers Blvd, Drive ±2.5 miles.

Turn Right on E Platte Ave, Drive ±0.8 miles. Take ramp on the right, Drive ±0.1 mile at fork keep left, Drive ±0.1 miles.

Turn Left on Space Village Ave, Drive ±1.5 miles.

Turn Right on CO-94 (State Highway 94), Drive ±5.5

Turn Right on S Blaney Rd, Drive 0.1 miles to proposed access road.

Turn Right onto proposed access road and drive West ±0.07 miles, follow road as it turns to South and continue ±0.01 miles to proposed PONDEROSA 41-17 1V Location.


Total distance from Colorado Springs, CO to proposed well location is ±16.9 miles.

Legend

 Proposed Well Pad

 Proposed Phase 2 Pad

 Proposed Phase 1 Pad

 Proposed Access Road

Reference Location

** All Measurements are Made from
Reference Well PONDEROSA 41-17 1V**

Lat: 38.837039° Long:-104.573131° (NAD83)
Elevation: 6505 Feet



Use our resources to find yours!
www.petro-fs.com
(303) 928-7128

Field Date: 01/03/2012
Drafting Date: 01/18/2012
Drafter: KLM
Checked By: BHF

Data Sources:
- TOPO courtesy of USGS

Prepared for:



**ULTRA
RESOURCES,
INC**