

Well Name: Coalbank Creek 10-20

Surface Location: Coalbank Creek 9-20 Pad Sec.20-T7N-R66W
North American Datum 1983, US State Plane 1983 Colorado Northern Zone
Ground Elevation: 4932.0

+N/-S
0.0

+E/-W
0.0

Northing
1446848.35
Original Well Elev

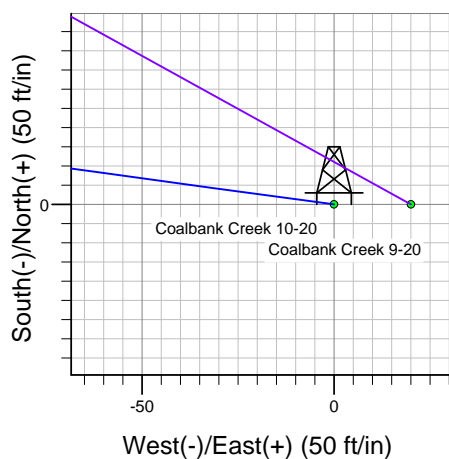
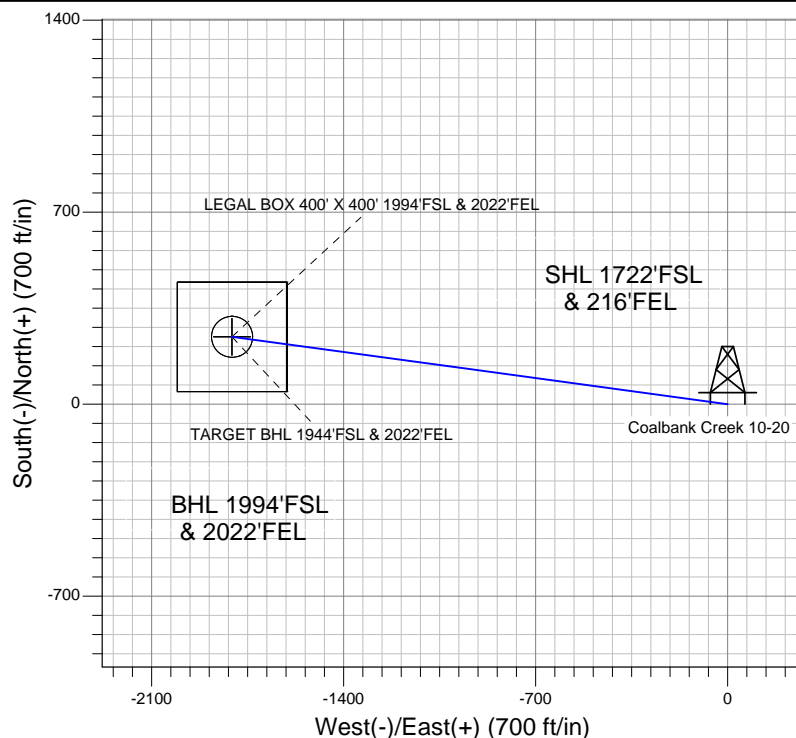
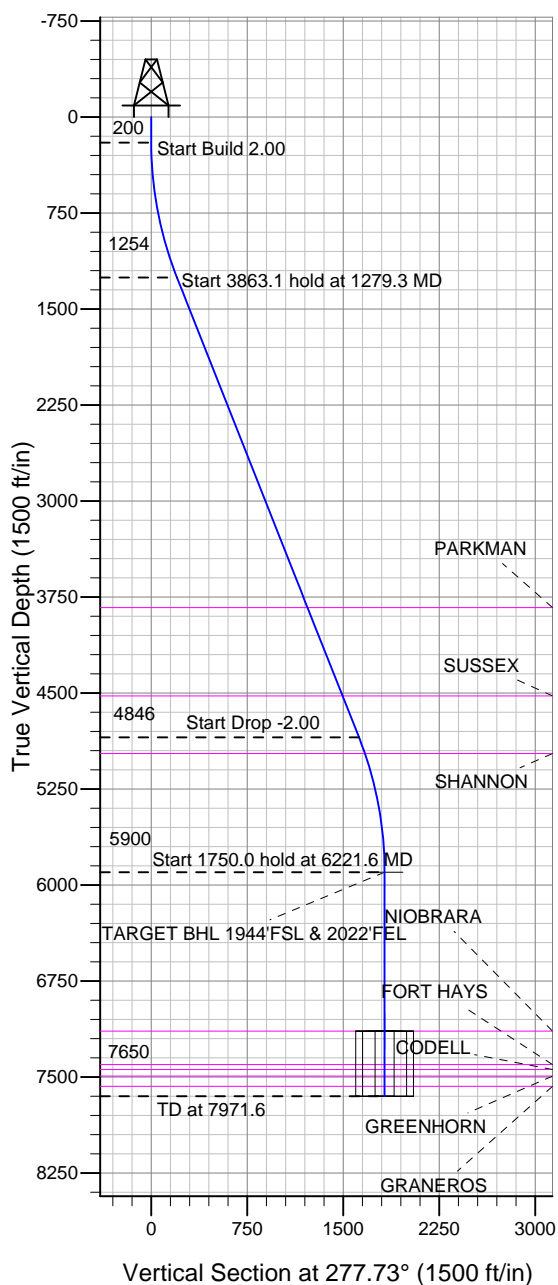
Easting
3196338.17
WELL @ 4942.0ft (Original Well Elev)

Latitude
40.557851

Longitude
-104.793389

Slot

BAYSWATER EXPLORATION & PRODUCTION



Coalbank Creek 9-20 Pad Sec.20-T7N-R66W
Coalbank Creek 10-20
Plan #2 (1-6-12)
16:21, January 06 2012



Azimuths to True North
Magnetic North: 8.82°
Magnetic Field
Strength: 53150.9snT
Dip Angle: 67.15°
Date: 1/6/2012
Model: IGRF2010

WELLBORE TARGET DETAILS (LAT/LONG)

Name	TVD	+N/-S	+E/-W	Latitude	Longitude	Shape
TARGET BHL 1944'FSL & 2022'FEL	5900.0	245.3	-1806.4	40.558524	-104.799890	Point
LEGAL BOX 400' X 400' 1994'FSL & 2022'FEL	7142.0	245.3	-1806.4	40.558524	-104.799890	Rectangle (Sides: L400.0 W400.0)
TARGET CIRCLE 1944'FSL & 2022'FEL	7142.0	245.3	-1806.4	40.558524	-104.799890	Circle (Radius: 75.0)

SECTION DETAILS

Sec	MD	Inc	Azi	TVD	+N/-S	+E/-W	DLeg	TFace	VSec	Target
1	0.0	0.00	0.00	0.0	0.0	0.0	0.00	0.00	0.0	
2	200.0	0.00	0.00	200.0	0.0	0.0	0.00	0.00	0.0	
3	1279.3	21.59	277.73	1253.9	27.0	-199.1	2.00	277.73	200.9	
4	5142.3	21.59	277.73	4846.1	218.2	-1607.3	0.00	0.00	1622.1	
5	6221.6	0.00	0.00	5900.0	245.3	-1806.4	2.00	180.00	1823.0	TARGET BHL 1944'FSL & 2022'FEL
6	7971.6	0.00	0.00	7650.0	245.3	-1806.4	0.00	0.00	1823.0	



BAYSWATER EXPLORATION & PRODUCTION

SEC.20-T7N-R66W

Coalbank Creek 9-20 Pad Sec.20-T7N-R66W

Coalbank Creek 10-20

Wellbore #1

Plan: Plan #2 (1-6-12)

Standard Planning Report

06 January, 2012

Database:	Landmark	Local Co-ordinate Reference:	Well Coalbank Creek 10-20
Company:	BAYSWATER EXPLORATION & PRODUCTION	TVD Reference:	WELL @ 4942.0ft (Original Well Elev)
Project:	SEC.20-T7N-R66W	MD Reference:	WELL @ 4942.0ft (Original Well Elev)
Site:	Coalbank Creek 9-20 Pad Sec.20-T7N-R66W	North Reference:	True
Well:	Coalbank Creek 10-20	Survey Calculation Method:	Minimum Curvature
Wellbore:	Wellbore #1		
Design:	Plan #2 (1-6-12)		

Project	SEC.20-T7N-R66W, Weld County, CO		
Map System:	US State Plane 1983	System Datum:	Mean Sea Level
Geo Datum:	North American Datum 1983		Using Well Reference Point
Map Zone:	Colorado Northern Zone		Using geodetic scale factor

Coalbank Creek 9-20 Pad Sec.20-T7N-R66W					
Site Position:		Northing:		1,446,597.85 ft	
From:		Easting:		3,195,394.00 ft	
Position Uncertainty:		Slot Radius:		"	
Lat/Long				Latitude:	
0.0 ft				Longitude:	
				-104.796794	
				Grid Convergence:	
				0.45 °	

Well	Coalbank Creek 10-20					
Well Position	+N-S	243.0 ft	Northing:	1,446,848.35 ft	Latitude:	40.557851
	+E-W	946.2 ft	Easting:	3,196,338.17 ft	Longitude:	-104.793389
Position Uncertainty		0.0 ft	Wellhead Elevation:	ft	Ground Level:	4,932.0 ft

Wellbore	Wellbore #1				
Magnetics	Model Name	Sample Date	Declination (°)	Dip Angle (°)	Field Strength (nT)
	IGRF2010	1/6/2012	8.82	67.15	53,151

Design	Plan #2 (1-6-12)			
Audit Notes:				
Version:	Phase:	PROTOTYPE	Tie On Depth:	0.0
Vertical Section:	Depth From (TVD) (ft)	+N/-S (ft)	+E/-W (ft)	Direction (°)
	0.0	0.0	0.0	277.73

Plan Sections										
Measured Depth (ft)	Inclination (°)	Azimuth (°)	Vertical Depth (ft)	+N/-S (ft)	+E/-W (ft)	Dogleg Rate (°/100ft)	Build Rate (°/100ft)	Turn Rate (°/100ft)	TFO (°)	Target
0.0	0.00	0.00	0.0	0.0	0.0	0.00	0.00	0.00	0.00	
200.0	0.00	0.00	200.0	0.0	0.0	0.00	0.00	0.00	0.00	
1,279.3	21.59	277.73	1,253.9	27.0	-199.1	2.00	2.00	0.00	277.73	
5,142.3	21.59	277.73	4,846.1	218.2	-1,607.3	0.00	0.00	0.00	0.00	
6,221.6	0.00	0.00	5,900.0	245.3	-1,806.4	2.00	-2.00	0.00	180.00	TARGET BHL 1944
7,971.6	0.00	0.00	7,650.0	245.3	-1,806.4	0.00	0.00	0.00	0.00	

Database:	Landmark	Local Co-ordinate Reference:	Well Coalbank Creek 10-20
Company:	BAYSWATER EXPLORATION & PRODUCTION	TVD Reference:	WELL @ 4942.0ft (Original Well Elev)
Project:	SEC.20-T7N-R66W	MD Reference:	WELL @ 4942.0ft (Original Well Elev)
Site:	Coalbank Creek 9-20 Pad Sec.20-T7N-R66W	North Reference:	True
Well:	Coalbank Creek 10-20	Survey Calculation Method:	Minimum Curvature
Wellbore:	Wellbore #1		
Design:	Plan #2 (1-6-12)		

Planned Survey									
Measured Depth (ft)	Inclination (°)	Azimuth (°)	Vertical Depth (ft)	+N/-S (ft)	+E/-W (ft)	Vertical Section (ft)	Dogleg Rate (°/100ft)	Build Rate (°/100ft)	Turn Rate (°/100ft)
0.0	0.00	0.00	0.0	0.0	0.0	0.0	0.00	0.00	0.00
40.0	0.00	0.00	40.0	0.0	0.0	0.0	0.00	0.00	0.00
80.0	0.00	0.00	80.0	0.0	0.0	0.0	0.00	0.00	0.00
120.0	0.00	0.00	120.0	0.0	0.0	0.0	0.00	0.00	0.00
160.0	0.00	0.00	160.0	0.0	0.0	0.0	0.00	0.00	0.00
200.0	0.00	0.00	200.0	0.0	0.0	0.0	0.00	0.00	0.00
240.0	0.80	277.73	240.0	0.0	-0.3	0.3	2.00	2.00	0.00
280.0	1.60	277.73	280.0	0.2	-1.1	1.1	2.00	2.00	0.00
320.0	2.40	277.73	320.0	0.3	-2.5	2.5	2.00	2.00	0.00
360.0	3.20	277.73	359.9	0.6	-4.4	4.5	2.00	2.00	0.00
400.0	4.00	277.73	399.8	0.9	-6.9	7.0	2.00	2.00	0.00
440.0	4.80	277.73	439.7	1.4	-10.0	10.0	2.00	2.00	0.00
480.0	5.60	277.73	479.6	1.8	-13.5	13.7	2.00	2.00	0.00
520.0	6.40	277.73	519.3	2.4	-17.7	17.9	2.00	2.00	0.00
560.0	7.20	277.73	559.1	3.0	-22.4	22.6	2.00	2.00	0.00
600.0	8.00	277.73	598.7	3.8	-27.6	27.9	2.00	2.00	0.00
640.0	8.80	277.73	638.3	4.5	-33.4	33.7	2.00	2.00	0.00
680.0	9.60	277.73	677.8	5.4	-39.8	40.1	2.00	2.00	0.00
720.0	10.40	277.73	717.1	6.3	-46.6	47.1	2.00	2.00	0.00
760.0	11.20	277.73	756.4	7.3	-54.1	54.6	2.00	2.00	0.00
800.0	12.00	277.73	795.6	8.4	-62.0	62.6	2.00	2.00	0.00
840.0	12.80	277.73	834.7	9.6	-70.5	71.2	2.00	2.00	0.00
845.4	12.91	277.73	840.0	9.7	-71.7	72.4	2.00	2.00	0.00
8 5/8"									
880.0	13.60	277.73	873.6	10.8	-79.6	80.3	2.00	2.00	0.00
920.0	14.40	277.73	912.4	12.1	-89.2	90.0	2.00	2.00	0.00
960.0	15.20	277.73	951.1	13.5	-99.3	100.2	2.00	2.00	0.00
1,000.0	16.00	277.73	989.6	14.9	-110.0	111.0	2.00	2.00	0.00
1,040.0	16.80	277.73	1,028.0	16.5	-121.2	122.3	2.00	2.00	0.00
1,080.0	17.60	277.73	1,066.2	18.0	-132.9	134.1	2.00	2.00	0.00
1,120.0	18.40	277.73	1,104.3	19.7	-145.1	146.5	2.00	2.00	0.00
1,160.0	19.20	277.73	1,142.1	21.4	-157.9	159.3	2.00	2.00	0.00
1,200.0	20.00	277.73	1,179.8	23.2	-171.2	172.8	2.00	2.00	0.00
1,240.0	20.80	277.73	1,217.3	25.1	-185.0	186.7	2.00	2.00	0.00
1,279.3	21.59	277.73	1,253.9	27.0	-199.1	200.9	2.00	2.00	0.00
1,280.0	21.59	277.73	1,254.6	27.1	-199.3	201.2	0.00	0.00	0.00
1,320.0	21.59	277.73	1,291.8	29.0	-213.9	215.9	0.00	0.00	0.00
1,360.0	21.59	277.73	1,329.0	31.0	-228.5	230.6	0.00	0.00	0.00
1,400.0	21.59	277.73	1,366.2	33.0	-243.1	245.3	0.00	0.00	0.00
1,440.0	21.59	277.73	1,403.4	35.0	-257.7	260.0	0.00	0.00	0.00
1,480.0	21.59	277.73	1,440.6	37.0	-272.3	274.8	0.00	0.00	0.00
1,520.0	21.59	277.73	1,477.8	38.9	-286.8	289.5	0.00	0.00	0.00
1,560.0	21.59	277.73	1,515.0	40.9	-301.4	304.2	0.00	0.00	0.00
1,600.0	21.59	277.73	1,552.2	42.9	-316.0	318.9	0.00	0.00	0.00
1,640.0	21.59	277.73	1,589.4	44.9	-330.6	333.6	0.00	0.00	0.00
1,680.0	21.59	277.73	1,626.5	46.9	-345.2	348.3	0.00	0.00	0.00
1,720.0	21.59	277.73	1,663.7	48.8	-359.7	363.0	0.00	0.00	0.00
1,760.0	21.59	277.73	1,700.9	50.8	-374.3	377.8	0.00	0.00	0.00
1,800.0	21.59	277.73	1,738.1	52.8	-388.9	392.5	0.00	0.00	0.00
1,840.0	21.59	277.73	1,775.3	54.8	-403.5	407.2	0.00	0.00	0.00
1,880.0	21.59	277.73	1,812.5	56.8	-418.1	421.9	0.00	0.00	0.00
1,920.0	21.59	277.73	1,849.7	58.7	-432.7	436.6	0.00	0.00	0.00
1,960.0	21.59	277.73	1,886.9	60.7	-447.2	451.3	0.00	0.00	0.00

Database:	Landmark	Local Co-ordinate Reference:	Well Coalbank Creek 10-20
Company:	BAYSWATER EXPLORATION & PRODUCTION	TVD Reference:	WELL @ 4942.0ft (Original Well Elev)
Project:	SEC.20-T7N-R66W	MD Reference:	WELL @ 4942.0ft (Original Well Elev)
Site:	Coalbank Creek 9-20 Pad Sec.20-T7N-R66W	North Reference:	True
Well:	Coalbank Creek 10-20	Survey Calculation Method:	Minimum Curvature
Wellbore:	Wellbore #1		
Design:	Plan #2 (1-6-12)		

Planned Survey									
Measured Depth (ft)	Inclination (°)	Azimuth (°)	Vertical Depth (ft)	+N/-S (ft)	+E/-W (ft)	Vertical Section (ft)	Dogleg Rate (°/100ft)	Build Rate (°/100ft)	Turn Rate (°/100ft)
2,000.0	21.59	277.73	1,924.1	62.7	-461.8	466.1	0.00	0.00	0.00
2,040.0	21.59	277.73	1,961.3	64.7	-476.4	480.8	0.00	0.00	0.00
2,080.0	21.59	277.73	1,998.5	66.7	-491.0	495.5	0.00	0.00	0.00
2,120.0	21.59	277.73	2,035.7	68.6	-505.6	510.2	0.00	0.00	0.00
2,160.0	21.59	277.73	2,072.9	70.6	-520.1	524.9	0.00	0.00	0.00
2,200.0	21.59	277.73	2,110.1	72.6	-534.7	539.6	0.00	0.00	0.00
2,240.0	21.59	277.73	2,147.3	74.6	-549.3	554.3	0.00	0.00	0.00
2,280.0	21.59	277.73	2,184.5	76.6	-563.9	569.1	0.00	0.00	0.00
2,320.0	21.59	277.73	2,221.7	78.5	-578.5	583.8	0.00	0.00	0.00
2,360.0	21.59	277.73	2,258.9	80.5	-593.1	598.5	0.00	0.00	0.00
2,400.0	21.59	277.73	2,296.1	82.5	-607.6	613.2	0.00	0.00	0.00
2,440.0	21.59	277.73	2,333.2	84.5	-622.2	627.9	0.00	0.00	0.00
2,480.0	21.59	277.73	2,370.4	86.5	-636.8	642.6	0.00	0.00	0.00
2,520.0	21.59	277.73	2,407.6	88.4	-651.4	657.4	0.00	0.00	0.00
2,560.0	21.59	277.73	2,444.8	90.4	-666.0	672.1	0.00	0.00	0.00
2,600.0	21.59	277.73	2,482.0	92.4	-680.5	686.8	0.00	0.00	0.00
2,640.0	21.59	277.73	2,519.2	94.4	-695.1	701.5	0.00	0.00	0.00
2,680.0	21.59	277.73	2,556.4	96.4	-709.7	716.2	0.00	0.00	0.00
2,720.0	21.59	277.73	2,593.6	98.3	-724.3	730.9	0.00	0.00	0.00
2,760.0	21.59	277.73	2,630.8	100.3	-738.9	745.6	0.00	0.00	0.00
2,800.0	21.59	277.73	2,668.0	102.3	-753.5	760.4	0.00	0.00	0.00
2,840.0	21.59	277.73	2,705.2	104.3	-768.0	775.1	0.00	0.00	0.00
2,880.0	21.59	277.73	2,742.4	106.3	-782.6	789.8	0.00	0.00	0.00
2,920.0	21.59	277.73	2,779.6	108.2	-797.2	804.5	0.00	0.00	0.00
2,960.0	21.59	277.73	2,816.8	110.2	-811.8	819.2	0.00	0.00	0.00
3,000.0	21.59	277.73	2,854.0	112.2	-826.4	833.9	0.00	0.00	0.00
3,040.0	21.59	277.73	2,891.2	114.2	-840.9	848.7	0.00	0.00	0.00
3,080.0	21.59	277.73	2,928.4	116.2	-855.5	863.4	0.00	0.00	0.00
3,120.0	21.59	277.73	2,965.6	118.1	-870.1	878.1	0.00	0.00	0.00
3,160.0	21.59	277.73	3,002.8	120.1	-884.7	892.8	0.00	0.00	0.00
3,200.0	21.59	277.73	3,040.0	122.1	-899.3	907.5	0.00	0.00	0.00
3,240.0	21.59	277.73	3,077.1	124.1	-913.9	922.2	0.00	0.00	0.00
3,280.0	21.59	277.73	3,114.3	126.1	-928.4	937.0	0.00	0.00	0.00
3,320.0	21.59	277.73	3,151.5	128.0	-943.0	951.7	0.00	0.00	0.00
3,360.0	21.59	277.73	3,188.7	130.0	-957.6	966.4	0.00	0.00	0.00
3,400.0	21.59	277.73	3,225.9	132.0	-972.2	981.1	0.00	0.00	0.00
3,440.0	21.59	277.73	3,263.1	134.0	-986.8	995.8	0.00	0.00	0.00
3,480.0	21.59	277.73	3,300.3	136.0	-1,001.3	1,010.5	0.00	0.00	0.00
3,520.0	21.59	277.73	3,337.5	137.9	-1,015.9	1,025.2	0.00	0.00	0.00
3,560.0	21.59	277.73	3,374.7	139.9	-1,030.5	1,040.0	0.00	0.00	0.00
3,600.0	21.59	277.73	3,411.9	141.9	-1,045.1	1,054.7	0.00	0.00	0.00
3,640.0	21.59	277.73	3,449.1	143.9	-1,059.7	1,069.4	0.00	0.00	0.00
3,680.0	21.59	277.73	3,486.3	145.9	-1,074.2	1,084.1	0.00	0.00	0.00
3,720.0	21.59	277.73	3,523.5	147.8	-1,088.8	1,098.8	0.00	0.00	0.00
3,760.0	21.59	277.73	3,560.7	149.8	-1,103.4	1,113.5	0.00	0.00	0.00
3,800.0	21.59	277.73	3,597.9	151.8	-1,118.0	1,128.3	0.00	0.00	0.00
3,840.0	21.59	277.73	3,635.1	153.8	-1,132.6	1,143.0	0.00	0.00	0.00
3,880.0	21.59	277.73	3,672.3	155.8	-1,147.2	1,157.7	0.00	0.00	0.00
3,920.0	21.59	277.73	3,709.5	157.7	-1,161.7	1,172.4	0.00	0.00	0.00
3,960.0	21.59	277.73	3,746.7	159.7	-1,176.3	1,187.1	0.00	0.00	0.00
4,000.0	21.59	277.73	3,783.8	161.7	-1,190.9	1,201.8	0.00	0.00	0.00
4,040.0	21.59	277.73	3,821.0	163.7	-1,205.5	1,216.5	0.00	0.00	0.00
4,051.8	21.59	277.73	3,832.0	164.3	-1,209.8	1,220.9	0.00	0.00	0.00

Database:	Landmark	Local Co-ordinate Reference:	Well Coalbank Creek 10-20
Company:	BAYSWATER EXPLORATION & PRODUCTION	TVD Reference:	WELL @ 4942.0ft (Original Well Elev)
Project:	SEC.20-T7N-R66W	MD Reference:	WELL @ 4942.0ft (Original Well Elev)
Site:	Coalbank Creek 9-20 Pad Sec.20-T7N-R66W	North Reference:	True
Well:	Coalbank Creek 10-20	Survey Calculation Method:	Minimum Curvature
Wellbore:	Wellbore #1		
Design:	Plan #2 (1-6-12)		

Planned Survey

Measured Depth (ft)	Inclination (°)	Azimuth (°)	Vertical Depth (ft)	+N/-S (ft)	+E/-W (ft)	Vertical Section (ft)	Dogleg Rate (°/100ft)	Build Rate (°/100ft)	Turn Rate (°/100ft)
PARKMAN									
4,080.0	21.59	277.73	3,858.2	165.7	-1,220.1	1,231.3	0.00	0.00	0.00
4,120.0	21.59	277.73	3,895.4	167.6	-1,234.6	1,246.0	0.00	0.00	0.00
4,160.0	21.59	277.73	3,932.6	169.6	-1,249.2	1,260.7	0.00	0.00	0.00
4,200.0	21.59	277.73	3,969.8	171.6	-1,263.8	1,275.4	0.00	0.00	0.00
4,240.0	21.59	277.73	4,007.0	173.6	-1,278.4	1,290.1	0.00	0.00	0.00
4,280.0	21.59	277.73	4,044.2	175.6	-1,293.0	1,304.8	0.00	0.00	0.00
4,320.0	21.59	277.73	4,081.4	177.5	-1,307.6	1,319.6	0.00	0.00	0.00
4,360.0	21.59	277.73	4,118.6	179.5	-1,322.1	1,334.3	0.00	0.00	0.00
4,400.0	21.59	277.73	4,155.8	181.5	-1,336.7	1,349.0	0.00	0.00	0.00
4,440.0	21.59	277.73	4,193.0	183.5	-1,351.3	1,363.7	0.00	0.00	0.00
4,480.0	21.59	277.73	4,230.2	185.5	-1,365.9	1,378.4	0.00	0.00	0.00
4,520.0	21.59	277.73	4,267.4	187.4	-1,380.5	1,393.1	0.00	0.00	0.00
4,560.0	21.59	277.73	4,304.6	189.4	-1,395.0	1,407.8	0.00	0.00	0.00
4,600.0	21.59	277.73	4,341.8	191.4	-1,409.6	1,422.6	0.00	0.00	0.00
4,640.0	21.59	277.73	4,379.0	193.4	-1,424.2	1,437.3	0.00	0.00	0.00
4,680.0	21.59	277.73	4,416.2	195.3	-1,438.8	1,452.0	0.00	0.00	0.00
4,720.0	21.59	277.73	4,453.4	197.3	-1,453.4	1,466.7	0.00	0.00	0.00
4,760.0	21.59	277.73	4,490.5	199.3	-1,468.0	1,481.4	0.00	0.00	0.00
4,793.8	21.59	277.73	4,522.0	201.0	-1,480.3	1,493.9	0.00	0.00	0.00
SUSSEX									
4,800.0	21.59	277.73	4,527.7	201.3	-1,482.5	1,496.1	0.00	0.00	0.00
4,840.0	21.59	277.73	4,564.9	203.3	-1,497.1	1,510.9	0.00	0.00	0.00
4,880.0	21.59	277.73	4,602.1	205.2	-1,511.7	1,525.6	0.00	0.00	0.00
4,920.0	21.59	277.73	4,639.3	207.2	-1,526.3	1,540.3	0.00	0.00	0.00
4,960.0	21.59	277.73	4,676.5	209.2	-1,540.9	1,555.0	0.00	0.00	0.00
5,000.0	21.59	277.73	4,713.7	211.2	-1,555.4	1,569.7	0.00	0.00	0.00
5,040.0	21.59	277.73	4,750.9	213.2	-1,570.0	1,584.4	0.00	0.00	0.00
5,080.0	21.59	277.73	4,788.1	215.1	-1,584.6	1,599.1	0.00	0.00	0.00
5,120.0	21.59	277.73	4,825.3	217.1	-1,599.2	1,613.9	0.00	0.00	0.00
5,142.3	21.59	277.73	4,846.1	218.2	-1,607.3	1,622.1	0.00	0.00	0.00
5,160.0	21.23	277.73	4,862.5	219.1	-1,613.7	1,628.5	2.00	-2.00	0.00
5,200.0	20.43	277.73	4,899.9	221.0	-1,627.8	1,642.8	2.00	-2.00	0.00
5,240.0	19.63	277.73	4,937.5	222.9	-1,641.4	1,656.5	2.00	-2.00	0.00
5,276.6	18.90	277.73	4,972.0	224.5	-1,653.4	1,668.5	2.00	-2.00	0.00
SHANNON									
5,280.0	18.83	277.73	4,975.2	224.6	-1,654.5	1,669.6	2.00	-2.00	0.00
5,320.0	18.03	277.73	5,013.2	226.3	-1,667.0	1,682.3	2.00	-2.00	0.00
5,360.0	17.23	277.73	5,051.3	228.0	-1,679.0	1,694.4	2.00	-2.00	0.00
5,400.0	16.43	277.73	5,089.6	229.5	-1,690.5	1,706.0	2.00	-2.00	0.00
5,440.0	15.63	277.73	5,128.0	231.0	-1,701.4	1,717.0	2.00	-2.00	0.00
5,480.0	14.83	277.73	5,166.6	232.4	-1,711.8	1,727.5	2.00	-2.00	0.00
5,520.0	14.03	277.73	5,205.4	233.8	-1,721.7	1,737.5	2.00	-2.00	0.00
5,560.0	13.23	277.73	5,244.2	235.0	-1,731.0	1,746.9	2.00	-2.00	0.00
5,600.0	12.43	277.73	5,283.3	236.2	-1,739.9	1,755.8	2.00	-2.00	0.00
5,640.0	11.63	277.73	5,322.4	237.3	-1,748.1	1,764.2	2.00	-2.00	0.00
5,680.0	10.83	277.73	5,361.6	238.4	-1,755.8	1,771.9	2.00	-2.00	0.00
5,720.0	10.03	277.73	5,400.9	239.4	-1,763.0	1,779.2	2.00	-2.00	0.00
5,760.0	9.23	277.73	5,440.4	240.3	-1,769.6	1,785.9	2.00	-2.00	0.00
5,800.0	8.43	277.73	5,479.9	241.1	-1,775.7	1,792.0	2.00	-2.00	0.00
5,840.0	7.63	277.73	5,519.5	241.8	-1,781.3	1,797.6	2.00	-2.00	0.00
5,880.0	6.83	277.73	5,559.2	242.5	-1,786.3	1,802.6	2.00	-2.00	0.00
5,920.0	6.03	277.73	5,598.9	243.1	-1,790.7	1,807.1	2.00	-2.00	0.00

Database:	Landmark	Local Co-ordinate Reference:	Well Coalbank Creek 10-20
Company:	BAYSWATER EXPLORATION & PRODUCTION	TVD Reference:	WELL @ 4942.0ft (Original Well Elev)
Project:	SEC.20-T7N-R66W	MD Reference:	WELL @ 4942.0ft (Original Well Elev)
Site:	Coalbank Creek 9-20 Pad Sec.20-T7N-R66W	North Reference:	True
Well:	Coalbank Creek 10-20	Survey Calculation Method:	Minimum Curvature
Wellbore:	Wellbore #1		
Design:	Plan #2 (1-6-12)		

Planned Survey

Measured Depth (ft)	Inclination (°)	Azimuth (°)	Vertical Depth (ft)	+N/-S (ft)	+E/-W (ft)	Vertical Section (ft)	Dogleg Rate (°/100ft)	Build Rate (°/100ft)	Turn Rate (°/100ft)
5,960.0	5.23	277.73	5,638.7	243.7	-1,794.6	1,811.1	2.00	-2.00	0.00
6,000.0	4.43	277.73	5,678.6	244.1	-1,797.9	1,814.4	2.00	-2.00	0.00
6,040.0	3.63	277.73	5,718.5	244.5	-1,800.7	1,817.2	2.00	-2.00	0.00
6,080.0	2.83	277.73	5,758.4	244.8	-1,802.9	1,819.5	2.00	-2.00	0.00
6,120.0	2.03	277.73	5,798.4	245.0	-1,804.6	1,821.2	2.00	-2.00	0.00
6,160.0	1.23	277.73	5,838.4	245.2	-1,805.8	1,822.3	2.00	-2.00	0.00
6,200.0	0.43	277.73	5,878.4	245.3	-1,806.3	1,822.9	2.00	-2.00	0.00
6,221.6	0.00	0.00	5,900.0	245.3	-1,806.4	1,823.0	2.00	-2.00	380.59
TARGET BHL 1944'FSL & 2022'FEL									
6,240.0	0.00	0.00	5,918.4	245.3	-1,806.4	1,823.0	0.00	0.00	0.00
6,280.0	0.00	0.00	5,958.4	245.3	-1,806.4	1,823.0	0.00	0.00	0.00
6,320.0	0.00	0.00	5,998.4	245.3	-1,806.4	1,823.0	0.00	0.00	0.00
6,360.0	0.00	0.00	6,038.4	245.3	-1,806.4	1,823.0	0.00	0.00	0.00
6,400.0	0.00	0.00	6,078.4	245.3	-1,806.4	1,823.0	0.00	0.00	0.00
6,440.0	0.00	0.00	6,118.4	245.3	-1,806.4	1,823.0	0.00	0.00	0.00
6,480.0	0.00	0.00	6,158.4	245.3	-1,806.4	1,823.0	0.00	0.00	0.00
6,520.0	0.00	0.00	6,198.4	245.3	-1,806.4	1,823.0	0.00	0.00	0.00
6,560.0	0.00	0.00	6,238.4	245.3	-1,806.4	1,823.0	0.00	0.00	0.00
6,600.0	0.00	0.00	6,278.4	245.3	-1,806.4	1,823.0	0.00	0.00	0.00
6,640.0	0.00	0.00	6,318.4	245.3	-1,806.4	1,823.0	0.00	0.00	0.00
6,680.0	0.00	0.00	6,358.4	245.3	-1,806.4	1,823.0	0.00	0.00	0.00
6,720.0	0.00	0.00	6,398.4	245.3	-1,806.4	1,823.0	0.00	0.00	0.00
6,760.0	0.00	0.00	6,438.4	245.3	-1,806.4	1,823.0	0.00	0.00	0.00
6,800.0	0.00	0.00	6,478.4	245.3	-1,806.4	1,823.0	0.00	0.00	0.00
6,840.0	0.00	0.00	6,518.4	245.3	-1,806.4	1,823.0	0.00	0.00	0.00
6,880.0	0.00	0.00	6,558.4	245.3	-1,806.4	1,823.0	0.00	0.00	0.00
6,920.0	0.00	0.00	6,598.4	245.3	-1,806.4	1,823.0	0.00	0.00	0.00
6,960.0	0.00	0.00	6,638.4	245.3	-1,806.4	1,823.0	0.00	0.00	0.00
7,000.0	0.00	0.00	6,678.4	245.3	-1,806.4	1,823.0	0.00	0.00	0.00
7,040.0	0.00	0.00	6,718.4	245.3	-1,806.4	1,823.0	0.00	0.00	0.00
7,080.0	0.00	0.00	6,758.4	245.3	-1,806.4	1,823.0	0.00	0.00	0.00
7,120.0	0.00	0.00	6,798.4	245.3	-1,806.4	1,823.0	0.00	0.00	0.00
7,160.0	0.00	0.00	6,838.4	245.3	-1,806.4	1,823.0	0.00	0.00	0.00
7,200.0	0.00	0.00	6,878.4	245.3	-1,806.4	1,823.0	0.00	0.00	0.00
7,240.0	0.00	0.00	6,918.4	245.3	-1,806.4	1,823.0	0.00	0.00	0.00
7,280.0	0.00	0.00	6,958.4	245.3	-1,806.4	1,823.0	0.00	0.00	0.00
7,320.0	0.00	0.00	6,998.4	245.3	-1,806.4	1,823.0	0.00	0.00	0.00
7,360.0	0.00	0.00	7,038.4	245.3	-1,806.4	1,823.0	0.00	0.00	0.00
7,400.0	0.00	0.00	7,078.4	245.3	-1,806.4	1,823.0	0.00	0.00	0.00
7,440.0	0.00	0.00	7,118.4	245.3	-1,806.4	1,823.0	0.00	0.00	0.00
7,463.6	0.00	0.00	7,142.0	245.3	-1,806.4	1,823.0	0.00	0.00	0.00
NOIBRARA - TARGET CIRCLE 1944'FSL & 2022'FEL - LEGAL BOX 400' X 400' 1994'FSL & 2022'FEL									
7,480.0	0.00	0.00	7,158.4	245.3	-1,806.4	1,823.0	0.00	0.00	0.00
7,520.0	0.00	0.00	7,198.4	245.3	-1,806.4	1,823.0	0.00	0.00	0.00
7,560.0	0.00	0.00	7,238.4	245.3	-1,806.4	1,823.0	0.00	0.00	0.00
7,600.0	0.00	0.00	7,278.4	245.3	-1,806.4	1,823.0	0.00	0.00	0.00
7,640.0	0.00	0.00	7,318.4	245.3	-1,806.4	1,823.0	0.00	0.00	0.00
7,680.0	0.00	0.00	7,358.4	245.3	-1,806.4	1,823.0	0.00	0.00	0.00
7,720.0	0.00	0.00	7,398.4	245.3	-1,806.4	1,823.0	0.00	0.00	0.00
7,723.6	0.00	0.00	7,402.0	245.3	-1,806.4	1,823.0	0.00	0.00	0.00
FORT HAYS									
7,760.0	0.00	0.00	7,438.4	245.3	-1,806.4	1,823.0	0.00	0.00	0.00
7,763.6	0.00	0.00	7,442.0	245.3	-1,806.4	1,823.0	0.00	0.00	0.00

Database:	Landmark	Local Co-ordinate Reference:	Well Coalbank Creek 10-20
Company:	BAYSWATER EXPLORATION & PRODUCTION	TVD Reference:	WELL @ 4942.0ft (Original Well Elev)
Project:	SEC.20-T7N-R66W	MD Reference:	WELL @ 4942.0ft (Original Well Elev)
Site:	Coalbank Creek 9-20 Pad Sec.20-T7N-R66W	North Reference:	True
Well:	Coalbank Creek 10-20	Survey Calculation Method:	Minimum Curvature
Wellbore:	Wellbore #1		
Design:	Plan #2 (1-6-12)		

Planned Survey									
Measured Depth (ft)	Inclination (°)	Azimuth (°)	Vertical Depth (ft)	+N/-S (ft)	+E/-W (ft)	Vertical Section (ft)	Dogleg Rate (°/100ft)	Build Rate (°/100ft)	Turn Rate (°/100ft)
CODELL									
7,800.0	0.00	0.00	7,478.4	245.3	-1,806.4	1,823.0	0.00	0.00	0.00
7,813.6	0.00	0.00	7,492.0	245.3	-1,806.4	1,823.0	0.00	0.00	0.00
GREENHORN									
7,840.0	0.00	0.00	7,518.4	245.3	-1,806.4	1,823.0	0.00	0.00	0.00
7,880.0	0.00	0.00	7,558.4	245.3	-1,806.4	1,823.0	0.00	0.00	0.00
7,893.6	0.00	0.00	7,572.0	245.3	-1,806.4	1,823.0	0.00	0.00	0.00
GRANEROS									
7,920.0	0.00	0.00	7,598.4	245.3	-1,806.4	1,823.0	0.00	0.00	0.00
7,960.0	0.00	0.00	7,638.4	245.3	-1,806.4	1,823.0	0.00	0.00	0.00
7,971.6	0.00	0.00	7,650.0	245.3	-1,806.4	1,823.0	0.00	0.00	0.00

Targets									
Target Name	Dip Angle (°)	Dip Dir. (°)	TVD (ft)	+N/-S (ft)	+E/-W (ft)	Northing (ft)	Easting (ft)	Latitude	Longitude
- hit/miss target									
- Shape									
TARGET CIRCLE 194	0.00	0.00	7,142.0	245.3	-1,806.4	1,447,079.20	3,194,529.91	40.558524	-104.799890
- plan hits target center									
- Circle (radius 75.0)									
LEGAL BOX 400' X 40'	0.00	0.00	7,142.0	245.3	-1,806.4	1,447,079.21	3,194,529.88	40.558524	-104.799890
- plan hits target center									
- Rectangle (sides W400.0 H400.0 D508.0)									
TARGET BHL 1944'F	0.00	0.00	5,900.0	245.3	-1,806.4	1,447,079.20	3,194,529.91	40.558524	-104.799890
- plan hits target center									
- Point									

Casing Points					
Measured Depth (ft)	Vertical Depth (ft)	Name	Casing Diameter (")	Hole Diameter (")	
845.4	840.0	8 5/8"	8-5/8	12-1/4	

Formations						
Measured Depth (ft)	Vertical Depth (ft)	Name	Lithology	Dip (°)	Dip Direction (°)	
4,051.8	3,832.0	PARKMAN		0.00		
4,793.8	4,522.0	SUSSEX		0.00		
5,276.6	4,972.0	SHANNON		0.00		
7,463.6	7,142.0	NIOBRARA		0.00		
7,723.6	7,402.0	FORT HAYS		0.00		
7,763.6	7,442.0	CODELL		0.00		
7,813.6	7,492.0	GREENHORN		0.00		
7,893.6	7,572.0	GRANEROS		0.00		

Database:	Landmark	Local Co-ordinate Reference:	Well Coalbank Creek 10-20
Company:	BAYSWATER EXPLORATION & PRODUCTION	TVD Reference:	WELL @ 4942.0ft (Original Well Elev)
Project:	SEC.20-T7N-R66W	MD Reference:	WELL @ 4942.0ft (Original Well Elev)
Site:	Coalbank Creek 9-20 Pad Sec.20-T7N-R66W	North Reference:	True
Well:	Coalbank Creek 10-20	Survey Calculation Method:	Minimum Curvature
Wellbore:	Wellbore #1		
Design:	Plan #2 (1-6-12)		



BAYSWATER EXPLORATION & PRODUCTION

SEC.20-T7N-R66W

Coalbank Creek 9-20 Pad Sec.20-T7N-R66W

Coalbank Creek 10-20

Wellbore #1

Plan #2 (1-6-12)

Anticollision Report

06 January, 2012

Company:	BAYSWATER EXPLORATION & PRODUCTION	Local Co-ordinate Reference:	Well Coalbank Creek 10-20
Project:	SEC.20-T7N-R66W	TVD Reference:	WELL @ 4942.0ft (Original Well Elev)
Reference Site:	Coalbank Creek 9-20 Pad Sec.20-T7N-R66W	MD Reference:	WELL @ 4942.0ft (Original Well Elev)
Site Error:	0.0ft	North Reference:	True
Reference Well:	Coalbank Creek 10-20	Survey Calculation Method:	Minimum Curvature
Well Error:	0.0ft	Output errors are at	2.00 sigma
Reference Wellbore	Wellbore #1	Database:	Landmark
Reference Design:	Plan #2 (1-6-12)	Offset TVD Reference:	Offset Datum

Reference	Plan #2 (1-6-12)		
Filter type:	NO GLOBAL FILTER: Using user defined selection & filtering criteria		
Interpolation Method:	Stations	Error Model:	ISCWSA
Depth Range:	Unlimited	Scan Method:	Closest Approach 3D
Results Limited by:	Maximum center-center distance of 10,000.0ft	Error Surface:	Elliptical Conic
Warning Levels Evaluated at:	2.00 Sigma		

Survey Tool Program		Date	1/6/2012		
From (ft)	To (ft)	Survey (Wellbore)	Tool Name	Description	
0.0	7,971.6	Plan #2 (1-6-12) (Wellbore #1)	MWD	MWD - Standard	

Summary						
Site Name	Reference Measured Depth (ft)	Offset Measured Depth (ft)	Distance Between Centres (ft)	Distance Between Ellipses (ft)	Separation Factor	Warning
Offset Well - Wellbore - Design						
Coalbank Creek 9-20 Pad Sec.20-T7N-R66W						
Coalbank Creek 9-20 - Wellbore #1 - Plan #2 (1-6-12)	200.0	200.0	20.0	19.3	29.670	CC, ES
Coalbank Creek 9-20 - Wellbore #1 - Plan #2 (1-6-12)	400.0	399.8	26.9	25.4	17.144	SF

Coalbank Creek 9-20 Pad Sec.20-T7N-R66W - Coalbank Creek 9-20 - Wellbore #1 - Plan #2 (1-6-12)													Offset Site Error:	0.0 ft
Survey Program: 0-MWD													Offset Well Error:	0.0 ft
Reference		Offset		Semi Major Axis			Distance							
Measured Depth (ft)	Vertical Depth (ft)	Measured Depth (ft)	Vertical Depth (ft)	Reference (ft)	Offset (ft)	Highside Toolface (°)	Offset Wellbore Centre +N/-S (ft)	+E/-W (ft)	Between Centres (ft)	Between Ellipses (ft)	Minimum Separation (ft)	Separation Factor	Warning	
0.0	0.0	0.0	0.0	0.0	0.0	90.00	0.0	20.0	20.0					
100.0	100.0	100.0	100.0	0.1	0.1	90.00	0.0	20.0	20.0	19.8	0.22	89.011		
200.0	200.0	200.0	200.0	0.3	0.3	90.00	0.0	20.0	20.0	19.3	0.67	29.670	CC, ES	
300.0	300.0	300.0	300.0	0.6	0.6	172.88	0.0	20.0	21.7	20.6	1.12	19.384		
400.0	399.8	399.8	399.8	0.8	0.8	174.25	0.0	20.0	26.9	25.4	1.57	17.144	SF	
500.0	499.5	499.5	499.5	1.0	1.0	175.64	0.0	20.0	35.6	33.6	2.03	17.579		
600.0	598.7	598.7	598.7	1.3	1.2	176.74	0.0	20.0	47.8	45.3	2.48	19.235		
700.0	697.5	697.5	697.5	1.7	1.5	177.53	0.0	20.0	63.4	60.5	2.94	21.536		
800.0	795.6	795.6	795.6	2.0	1.7	178.09	0.0	20.0	82.5	79.1	3.41	24.211		
900.0	893.1	893.1	893.1	2.5	1.9	178.49	0.0	20.0	105.0	101.1	3.87	27.113		
1,000.0	989.6	989.6	989.6	3.0	2.1	178.77	0.0	20.0	130.8	126.5	4.34	30.158		
1,100.0	1,085.3	1,085.3	1,085.3	3.6	2.3	178.99	0.0	20.0	160.1	155.3	4.81	33.291		
1,200.0	1,179.8	1,179.8	1,179.8	4.2	2.5	179.15	0.0	20.0	192.6	187.3	5.28	36.479		
1,279.3	1,253.9	1,253.9	1,253.9	4.8	2.7	179.25	0.0	20.0	220.7	215.1	5.66	39.028		
1,300.0	1,273.2	1,273.2	1,273.2	5.0	2.7	179.27	0.0	20.0	228.4	222.6	5.76	39.647		
1,400.0	1,366.2	1,372.4	1,372.4	5.7	3.0	179.30	0.4	19.2	264.4	258.1	6.27	42.174		
1,500.0	1,459.2	1,476.2	1,476.1	6.5	3.2	179.06	2.6	15.3	297.4	290.6	6.78	43.881		
1,600.0	1,552.2	1,582.4	1,581.9	7.3	3.4	178.59	6.7	7.8	327.2	319.9	7.30	44.828		
1,700.0	1,645.1	1,690.6	1,689.4	8.0	3.7	177.94	12.9	-3.3	353.7	345.9	7.84	45.120		
1,800.0	1,738.1	1,800.6	1,798.1	8.8	4.0	177.13	21.1	-18.2	376.9	368.5	8.40	44.857		
1,900.0	1,831.1	1,898.2	1,894.1	9.6	4.3	176.38	29.3	-33.0	398.4	389.4	8.96	44.469		
2,000.0	1,924.1	1,995.7	1,990.2	10.4	4.6	175.71	37.5	-47.9	420.0	410.4	9.53	44.059		
2,100.0	2,017.1	2,093.2	2,086.2	11.2	4.9	175.10	45.7	-62.7	441.6	431.5	10.11	43.657		
2,200.0	2,110.1	2,190.8	2,182.3	12.0	5.2	174.55	53.8	-77.5	463.3	452.5	10.70	43.276		

Company:	BAYSWATER EXPLORATION & PRODUCTION	Local Co-ordinate Reference:	Well Coalbank Creek 10-20
Project:	SEC.20-T7N-R66W	TVD Reference:	WELL @ 4942.0ft (Original Well Elev)
Reference Site:	Coalbank Creek 9-20 Pad Sec.20-T7N-R66W	MD Reference:	WELL @ 4942.0ft (Original Well Elev)
Site Error:	0.0ft	North Reference:	True
Reference Well:	Coalbank Creek 10-20	Survey Calculation Method:	Minimum Curvature
Well Error:	0.0ft	Output errors are at	2.00 sigma
Reference Wellbore	Wellbore #1	Database:	Landmark
Reference Design:	Plan #2 (1-6-12)	Offset TVD Reference:	Offset Datum

Offset Design Coalbank Creek 9-20 Pad Sec.20-T7N-R66W - Coalbank Creek 9-20 - Wellbore #1 - Plan #2 (1-6-12)													Offset Site Error:	0.0 ft
Survey Program: 0-MWD													Offset Well Error:	0.0 ft
Reference		Offset		Semi Major Axis			Distance							Warning
Measured Depth (ft)	Vertical Depth (ft)	Measured Depth (ft)	Vertical Depth (ft)	Reference (ft)	Offset (ft)	Highside Toolface (°)	Offset Wellbore Centre +N/-S (ft)	+E/-W (ft)	Between Centres (ft)	Between Ellipses (ft)	Minimum Separation (ft)	Separation Factor		
2,300.0	2,203.1	2,288.3	2,278.3	12.7	5.5	174.05	62.0	-92.4	485.0	473.6	11.31	42.895		
2,400.0	2,296.1	2,385.8	2,374.4	13.5	5.9	173.60	70.2	-107.2	506.7	494.8	11.91	42.534		
2,500.0	2,389.0	2,483.4	2,470.4	14.3	6.2	173.18	78.4	-122.0	528.5	515.9	12.53	42.188		
2,600.0	2,482.0	2,580.9	2,566.5	15.1	6.6	172.79	86.6	-136.8	550.2	537.1	13.15	41.858		
2,700.0	2,575.0	2,678.4	2,662.5	15.9	6.9	172.43	94.8	-151.7	572.1	558.3	13.77	41.544		
2,800.0	2,668.0	2,776.0	2,758.6	16.7	7.3	172.10	103.0	-166.5	593.9	579.5	14.40	41.244		
2,900.0	2,761.0	2,873.5	2,854.6	17.5	7.6	171.80	111.2	-181.3	615.7	600.7	15.03	40.959		
3,000.0	2,854.0	2,971.0	2,950.7	18.3	8.0	171.51	119.3	-196.2	637.6	621.9	15.67	40.688		
3,100.0	2,947.0	3,068.6	3,046.7	19.1	8.4	171.24	127.5	-211.0	659.5	643.2	16.31	40.431		
3,200.0	3,040.0	3,166.1	3,142.8	19.9	8.7	170.99	135.7	-225.8	681.4	664.4	16.96	40.185		
3,300.0	3,132.9	3,263.6	3,238.8	20.6	9.1	170.76	143.9	-240.7	703.3	685.7	17.60	39.952		
3,400.0	3,225.9	3,361.1	3,334.9	21.4	9.5	170.54	152.1	-255.5	725.2	706.9	18.25	39.730		
3,500.0	3,318.9	3,458.7	3,430.9	22.2	9.9	170.33	160.3	-270.3	747.1	728.2	18.91	39.519		
3,600.0	3,411.9	3,556.2	3,527.0	23.0	10.2	170.13	168.5	-285.2	769.0	749.5	19.56	39.317		
3,700.0	3,504.9	3,653.7	3,623.0	23.8	10.6	169.95	176.7	-300.0	791.0	770.8	20.22	39.125		
3,800.0	3,597.9	3,751.3	3,719.1	24.6	11.0	169.77	184.8	-314.8	812.9	792.0	20.88	38.942		
3,900.0	3,690.9	3,848.8	3,815.1	25.4	11.4	169.61	193.0	-329.7	834.9	813.3	21.54	38.767		
4,000.0	3,783.8	3,946.3	3,911.2	26.2	11.7	169.45	201.2	-344.5	856.8	834.6	22.20	38.599		
4,100.0	3,876.8	4,043.9	4,007.2	27.0	12.1	169.30	209.4	-359.3	878.8	855.9	22.86	38.439		
4,200.0	3,969.8	4,141.4	4,103.3	27.8	12.5	169.16	217.6	-374.2	900.8	877.2	23.53	38.286		
4,300.0	4,062.8	4,238.9	4,199.3	28.6	12.9	169.02	225.8	-389.0	922.8	898.6	24.19	38.140		
4,400.0	4,155.8	4,336.5	4,295.4	29.4	13.3	168.89	234.0	-403.8	944.7	919.9	24.86	37.999		
4,500.0	4,248.8	4,434.0	4,391.4	30.2	13.6	168.77	242.2	-418.7	966.7	941.2	25.53	37.865		
4,600.0	4,341.8	4,512.0	4,468.3	31.0	13.9	168.70	248.3	-429.8	989.6	963.5	26.11	37.896		
4,700.0	4,434.8	4,586.6	4,542.3	31.8	14.1	168.70	253.3	-438.9	1,014.6	987.9	26.65	38.074		
4,800.0	4,527.7	4,660.4	4,615.6	32.5	14.3	168.75	257.3	-446.1	1,041.7	1,014.5	27.16	38.358		
4,900.0	4,620.7	4,733.2	4,688.1	33.3	14.4	168.86	260.4	-451.6	1,070.9	1,043.2	27.64	38.737		
5,000.0	4,713.7	4,800.0	4,754.8	34.1	14.6	169.00	262.4	-455.3	1,102.1	1,074.0	28.11	39.215		
5,100.0	4,806.7	4,875.6	4,830.3	34.9	14.7	169.21	263.7	-457.7	1,135.4	1,106.9	28.55	39.763		
5,142.3	4,846.1	4,900.0	4,854.7	35.3	14.7	169.28	264.0	-458.2	1,150.1	1,121.4	28.73	40.027		
5,200.0	4,899.9	4,945.3	4,900.0	35.7	14.8	169.51	264.1	-458.5	1,170.1	1,141.1	29.01	40.333		
5,300.0	4,994.2	5,039.5	4,994.2	36.2	14.9	169.92	264.1	-458.5	1,202.9	1,173.5	29.47	40.815		
5,400.0	5,089.6	5,134.9	5,089.6	36.7	15.1	170.27	264.1	-458.5	1,232.5	1,202.6	29.91	41.203		
5,500.0	5,186.0	5,231.3	5,186.0	37.2	15.2	170.56	264.1	-458.5	1,258.7	1,228.4	30.32	41.513		
5,600.0	5,283.3	5,328.5	5,283.3	37.6	15.4	170.81	264.1	-458.5	1,281.7	1,251.0	30.70	41.751		
5,700.0	5,381.3	5,426.5	5,381.3	37.9	15.6	171.01	264.1	-458.5	1,301.3	1,270.2	31.04	41.923		
5,800.0	5,479.9	5,525.2	5,479.9	38.2	15.7	171.17	264.1	-458.5	1,317.5	1,286.1	31.34	42.033		
5,900.0	5,579.1	5,624.3	5,579.1	38.5	15.9	171.30	264.1	-458.5	1,330.2	1,298.6	31.61	42.085		
6,000.0	5,678.6	5,723.9	5,678.6	38.6	16.1	171.39	264.1	-458.5	1,339.6	1,307.8	31.83	42.081		
6,100.0	5,778.4	5,823.7	5,778.4	38.8	16.2	171.44	264.1	-458.5	1,345.5	1,313.5	32.02	42.022		
6,200.0	5,878.4	5,923.7	5,878.4	38.9	16.4	171.46	264.1	-458.5	1,348.0	1,315.8	32.16	41.910		
6,221.6	5,900.0	5,945.3	5,900.0	38.9	16.4	89.20	264.1	-458.5	1,348.1	1,315.9	32.19	41.878		
6,300.0	5,978.4	6,023.7	5,978.4	38.9	16.6	89.20	264.1	-458.5	1,348.1	1,315.6	32.45	41.541		
6,400.0	6,078.4	6,123.7	6,078.4	39.0	16.7	89.20	264.1	-458.5	1,348.1	1,315.3	32.79	41.113		
6,500.0	6,178.4	6,223.7	6,178.4	39.1	16.9	89.20	264.1	-458.5	1,348.1	1,314.9	33.13	40.692		
6,600.0	6,278.4	6,323.7	6,278.4	39.2	17.1	89.20	264.1	-458.5	1,348.1	1,314.6	33.47	40.276		
6,700.0	6,378.4	6,423.7	6,378.4	39.2	17.3	89.20	264.1	-458.5	1,348.1	1,314.3	33.82	39.865		
6,800.0	6,478.4	6,523.7	6,478.4	39.3	17.5	89.20	264.1	-458.5	1,348.1	1,313.9	34.16	39.461		
6,900.0	6,578.4	6,623.7	6,578.4	39.4	17.6	89.20	264.1	-458.5	1,348.1	1,313.6	34.51	39.062		
7,000.0	6,678.4	6,723.7	6,678.4	39.5	17.8	89.20	264.1	-458.5	1,348.1	1,313.2	34.86	38.668		
7,100.0	6,778.4	6,823.7	6,778.4	39.6	18.0	89.20	264.1	-458.5	1,348.1	1,312.9	35.22	38.281		

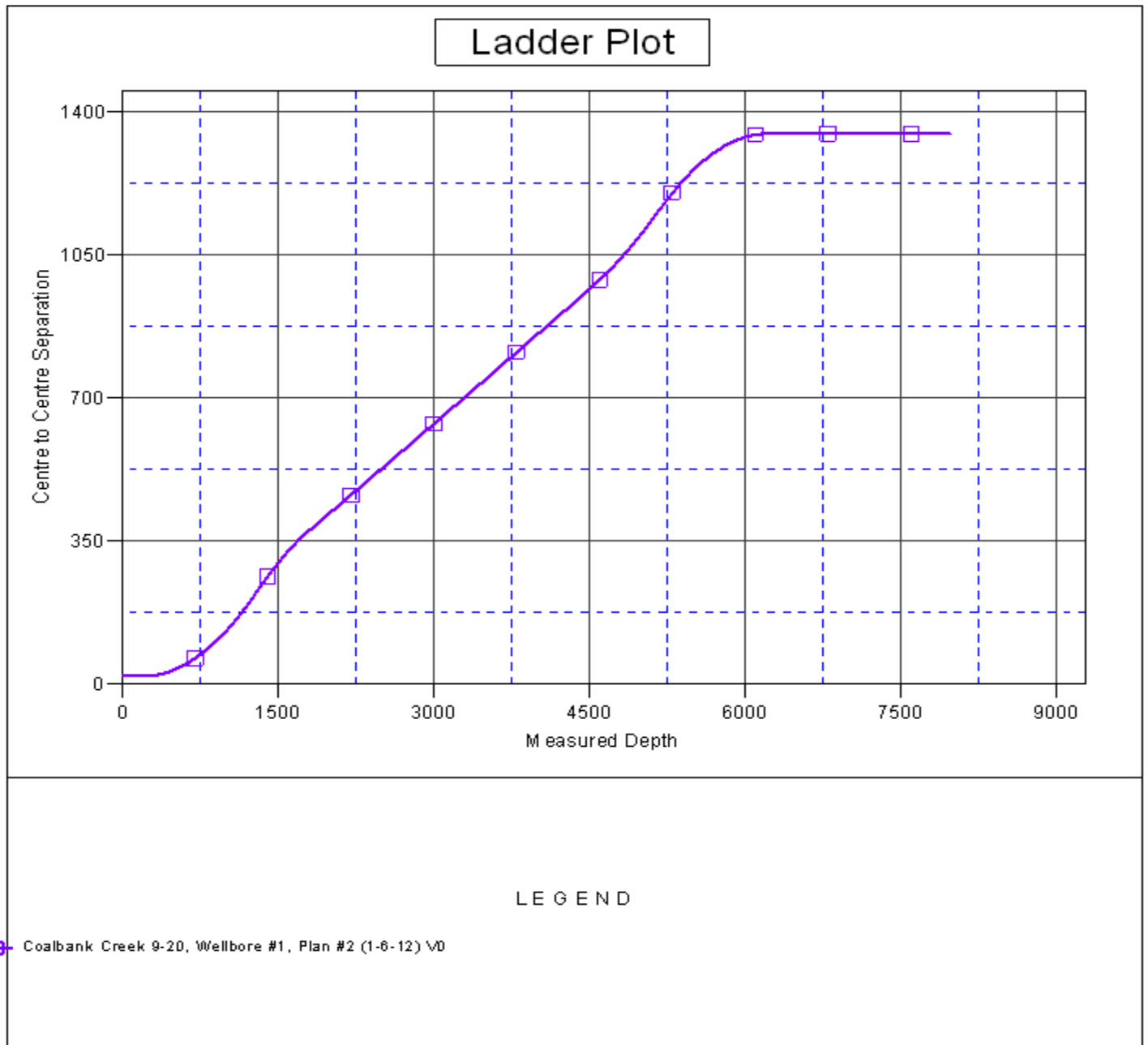
CC - Min centre to center distance or convergent point, SF - min separation factor, ES - min ellipse separation

Company:	BAYSWATER EXPLORATION & PRODUCTION	Local Co-ordinate Reference:	Well Coalbank Creek 10-20
Project:	SEC.20-T7N-R66W	TVD Reference:	WELL @ 4942.0ft (Original Well Elev)
Reference Site:	Coalbank Creek 9-20 Pad Sec.20-T7N-R66W	MD Reference:	WELL @ 4942.0ft (Original Well Elev)
Site Error:	0.0ft	North Reference:	True
Reference Well:	Coalbank Creek 10-20	Survey Calculation Method:	Minimum Curvature
Well Error:	0.0ft	Output errors are at	2.00 sigma
Reference Wellbore	Wellbore #1	Database:	Landmark
Reference Design:	Plan #2 (1-6-12)	Offset TVD Reference:	Offset Datum

Offset Design												Offset Site Error:	0.0 ft
Survey Program: 0-MWD												Offset Well Error:	0.0 ft
Reference		Offset		Semi Major Axis		Distance							
Measured Depth (ft)	Vertical Depth (ft)	Measured Depth (ft)	Vertical Depth (ft)	Reference (ft)	Offset (ft)	Highside Toolface (°)	Offset Wellbore Centre +N/-S (ft)	Offset Wellbore Centre +E/-W (ft)	Between Centres (ft)	Between Ellipses (ft)	Minimum Separation (ft)	Separation Factor	Warning
7,200.0	6,878.4	6,923.7	6,878.4	39.7	18.2	89.20	264.1	-458.5	1,348.1	1,312.5	35.57	37.898	
7,300.0	6,978.4	7,023.7	6,978.4	39.7	18.4	89.20	264.1	-458.5	1,348.1	1,312.1	35.93	37.522	
7,400.0	7,078.4	7,123.7	7,078.4	39.8	18.6	89.20	264.1	-458.5	1,348.1	1,311.8	36.29	37.151	
7,500.0	7,178.4	7,223.7	7,178.4	39.9	18.7	89.20	264.1	-458.5	1,348.1	1,311.4	36.65	36.785	
7,600.0	7,278.4	7,323.7	7,278.4	40.0	18.9	89.20	264.1	-458.5	1,348.1	1,311.1	37.01	36.424	
7,700.0	7,378.4	7,423.7	7,378.4	40.1	19.1	89.20	264.1	-458.5	1,348.1	1,310.7	37.37	36.069	
7,800.0	7,478.4	7,523.7	7,478.4	40.2	19.3	89.20	264.1	-458.5	1,348.1	1,310.3	37.74	35.719	
7,900.0	7,578.4	7,623.7	7,578.4	40.3	19.5	89.20	264.1	-458.5	1,348.1	1,310.0	38.11	35.375	
7,971.6	7,650.0	7,695.3	7,650.0	40.3	19.6	89.20	264.1	-458.5	1,348.1	1,309.7	38.37	35.131	

Company:	BAYSWATER EXPLORATION & PRODUCTION	Local Co-ordinate Reference:	Well Coalbank Creek 10-20
Project:	SEC.20-T7N-R66W	TVD Reference:	WELL @ 4942.0ft (Original Well Elev)
Reference Site:	Coalbank Creek 9-20 Pad Sec.20-T7N-R66W	MD Reference:	WELL @ 4942.0ft (Original Well Elev)
Site Error:	0.0ft	North Reference:	True
Reference Well:	Coalbank Creek 10-20	Survey Calculation Method:	Minimum Curvature
Well Error:	0.0ft	Output errors are at	2.00 sigma
Reference Wellbore	Wellbore #1	Database:	Landmark
Reference Design:	Plan #2 (1-6-12)	Offset TVD Reference:	Offset Datum

Reference Depths are relative to WELL @ 4942.0ft (Original Well Elev) Coordinates are relative to: Coalbank Creek 10-20
 Offset Depths are relative to Offset Datum
 Central Meridian is -105.500000 °
 Coordinate System is US State Plane 1983, Colorado Northern Zone
 Grid Convergence at Surface is: 0.46°



Company:	BAYSWATER EXPLORATION & PRODUCTION	Local Co-ordinate Reference:	Well Coalbank Creek 10-20
Project:	SEC.20-T7N-R66W	TVD Reference:	WELL @ 4942.0ft (Original Well Elev)
Reference Site:	Coalbank Creek 9-20 Pad Sec.20-T7N-R66W	MD Reference:	WELL @ 4942.0ft (Original Well Elev)
Site Error:	0.0ft	North Reference:	True
Reference Well:	Coalbank Creek 10-20	Survey Calculation Method:	Minimum Curvature
Well Error:	0.0ft	Output errors are at	2.00 sigma
Reference Wellbore	Wellbore #1	Database:	Landmark
Reference Design:	Plan #2 (1-6-12)	Offset TVD Reference:	Offset Datum

Reference Depths are relative to WELL @ 4942.0ft (Original Well Elev) Coordinates are relative to: Coalbank Creek 10-20
Offset Depths are relative to Offset Datum Coordinate System is US State Plane 1983, Colorado Northern Zone
Central Meridian is -105.500000 ° Grid Convergence at Surface is: 0.46°

