

# ENSIGN

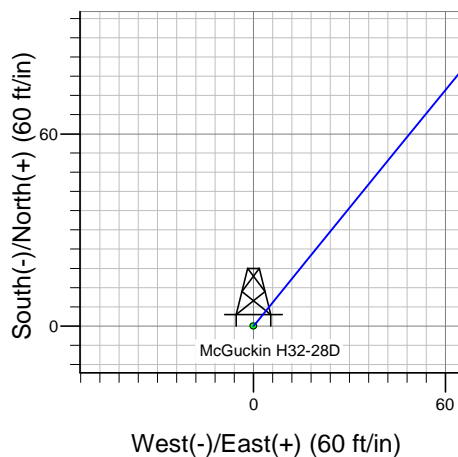
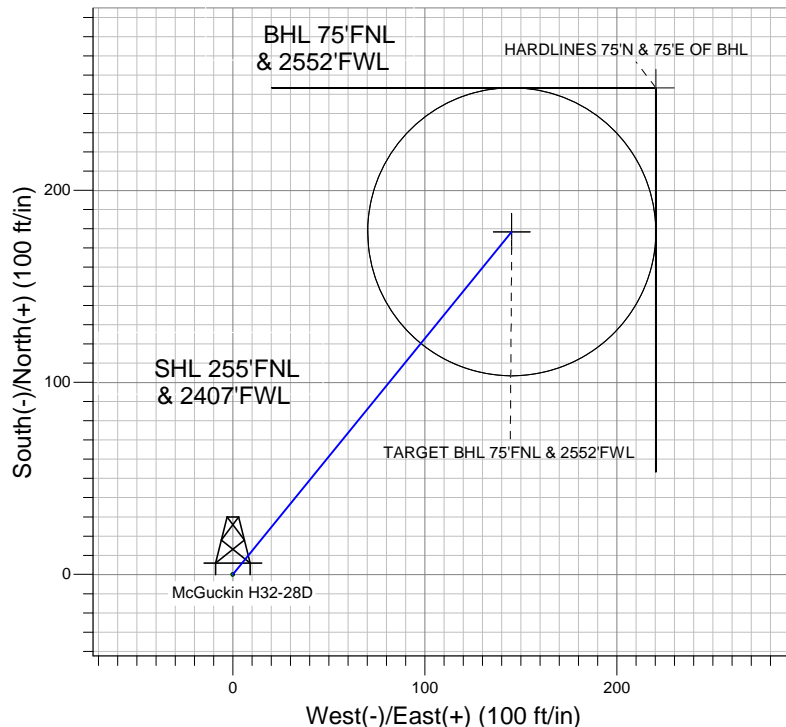
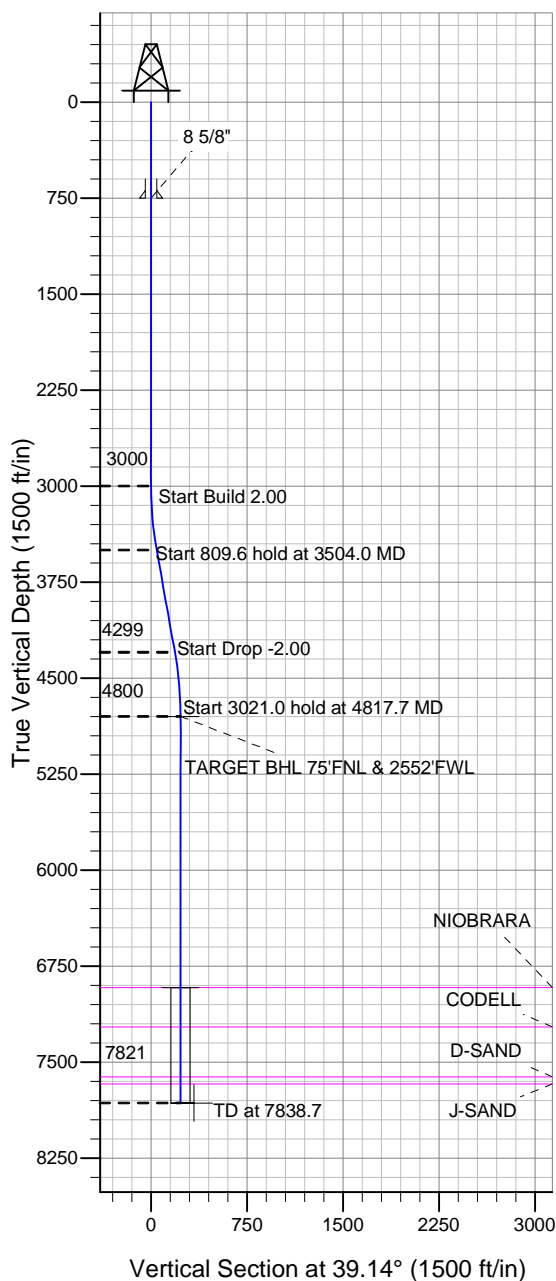
## Directional

### Well Name: McGuckin H32-28D

Surface Location: McGuckin H32-28D Pad Sec.32-T3N-R65W  
North American Datum 1983, US State Plane 1983 Colorado Northern Zone  
Ground Elevation: 4872.0

+N/-S	+E/-W	Northing	Easting	Latitude	Longitude	Slot
0.0	0.0	1312544.29	3226822.10	40.188480	-104.688110	
		Original Well Elev	WELL @ 4885.0ft (Original Well Elev)			

## NOBLE ENERGY INC WELD COUNTY CO



McGuckin H32-28D Pad Sec.32-T3N-R65W  
McGuckin H32-28D  
Noble McGuckin H32-28D Plan #1 (1-4-12)  
8:48, January 05 2012



Azimuths to True North  
Magnetic North: 8.73°  
Magnetic Field  
Strength: 52969.5snT  
Dip Angle: 66.87°  
Date: 1/4/2012  
Model: IGRF2010

### WELLBORE TARGET DETAILS (LAT/LONG)

Name	TVD	+N/-S	+E/-W	Latitude	Longitude	Shape
TARGET BHL 75'FNL & 2552'FWL	4800.0	178.5	145.3	40.188970	-104.687590	Point
TARGET CIRCLE 75'FNL & 2552'FWL	6918.0	178.5	145.3	40.188970	-104.687590	Circle (Radius: 75.0)
HARDLINES 75'N & 75'E OF BHL	7821.0	253.5	220.3	40.189176	-104.687321	Polygon

### SECTION DETAILS

Sec	MD	Inc	Azi	TVD	+N/-S	+E/-W	DLeg	TFace	VSec	Target
1	0.0	0.00	0.00	0.0	0.0	0.0	0.00	0.00	0.0	
2	3000.0	0.00	0.00	3000.0	0.0	0.0	0.00	0.00	0.0	
3	3504.0	10.08	39.14	3501.4	34.3	27.9	2.00	39.14	44.2	
4	4313.7	10.08	39.14	4298.6	144.2	117.4	0.00	0.00	185.9	
5	4817.7	0.00	0.00	4800.0	178.5	145.3	2.00	180.00	230.2	
6	7838.7	0.00	0.00	7821.0	178.5	145.3	0.00	0.00	230.2	TARGET BHL 75'FNL & 2552'FWL