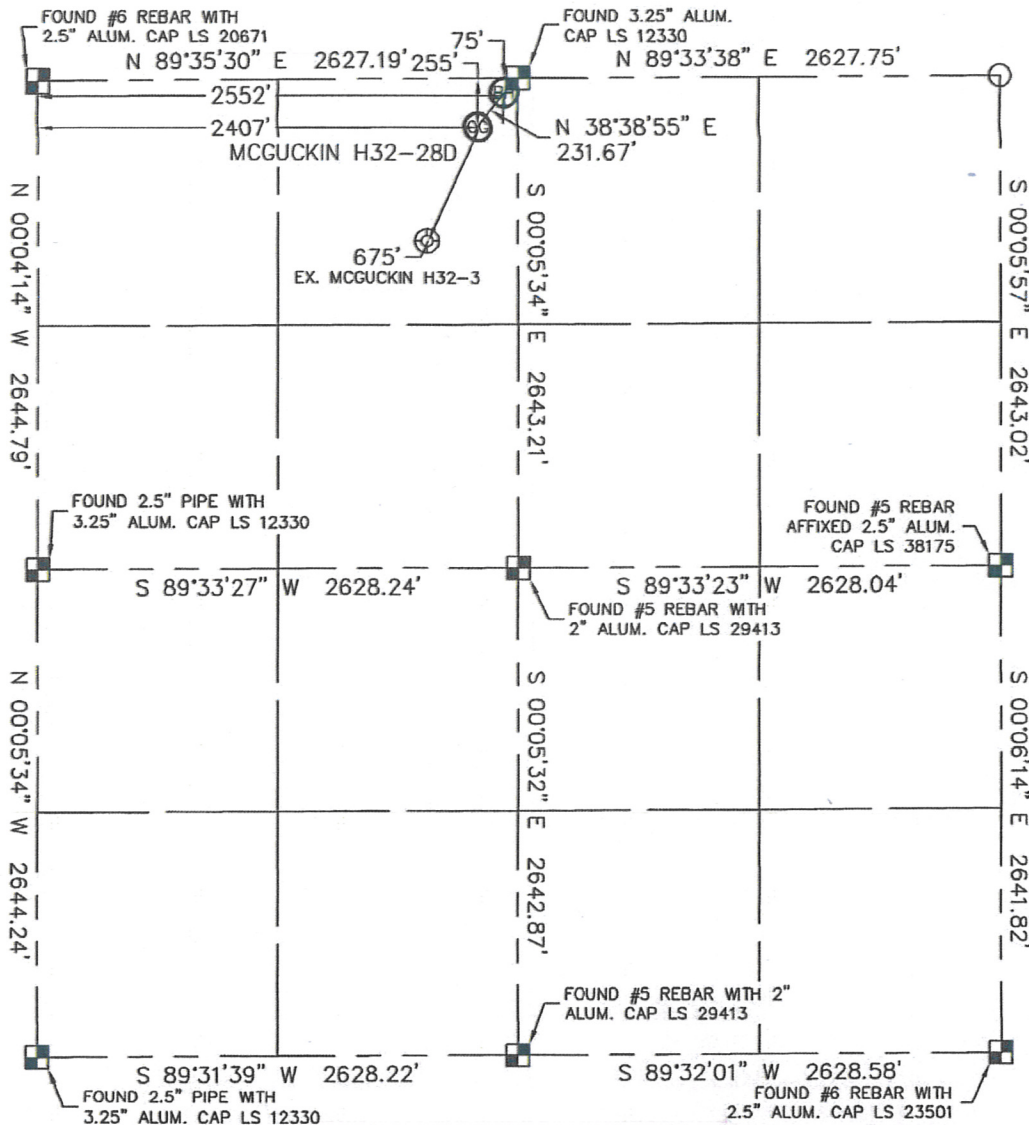


WELL LOCATION CERTIFICATE

THIS MAP DOES NOT REPRESENT A BOUNDARY SURVEY

SECTION: 32
TOWNSHIP: 3N
RANGE: 65W



In accordance with a request from Erik Van Decar with Noble Energy Inc. Lat40°, Inc. has determined the surface location of the MCGUCKIN H32-280 to be 255' from the NORTH line and 2407' from the WEST line and the bottom hole to be 75' from the NORTH line and 2552' from the WEST line as measured at right angles from the section lines of Section 32, Township 3 North, Range 65 West of the Sixth Principal Meridian, County of Weld, State of Colorado.

I hereby state that this Well Location Certificate was prepared by me, or under my direct supervision, that the fieldwork was completed on 1/14/11, for and on behalf of Noble Energy Inc. That this is not a Land Survey Plat or an Improvement Survey Plat, and that it is not to be relied upon for establishment of fence, building, or other future improvement lines.

NOTE:

- 1) Bearings shown are Grid Bearings of the Colorado State Plane Coordinate System, North Zone, North American Datum 1983/2007. The lineal dimensions as contained herein are based upon the "U.S. Survey Foot."
- 2) Ground elevations are based on an observed GPS elevation (NAVD 1988 DATUM).
- 3) NEAREST EXISTING WELL: MCGUCKIN H32-3 675'
- 4) IMPROVEMENTS: See LOCATION DRAWING for all visible improvements within 400' of disturbed area.
- 5) SURFACE USE: RANGELAND
- 6) INSTRUMENT OPERATOR: ADAM KELLY

SURFACE LOCATION

LATITUDE: 40.18848°N
LONGITUDE: 104.68811°W
PDOP: 1.7
ELEV: 4872
1/4, 1/4: NE1/4NW1/4
NEAREST PROPERTY LINE: 220' EAST

BOTTOM HOLE

LATITUDE: 40.18897°N
LONGITUDE: 104.68759°W

NOTE

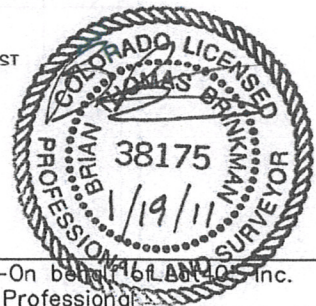
According to Colorado law, you must commence any legal action based upon any defect in this W.L.C. within three years after you discover such defect. In no event, may any action based upon any defect in this survey be commenced more than ten years after the date of the certificate shown hereon. (13-80-105 C.R.S.)

LEGEND

- = ALIQUOT MONUMENT AS DESCRIBED
- = CALCULATED POSITION

Brian T. Brinkman—On behalf of Lat40°, Inc.
Colorado Licensed Professional
Land Surveyor No. 38175

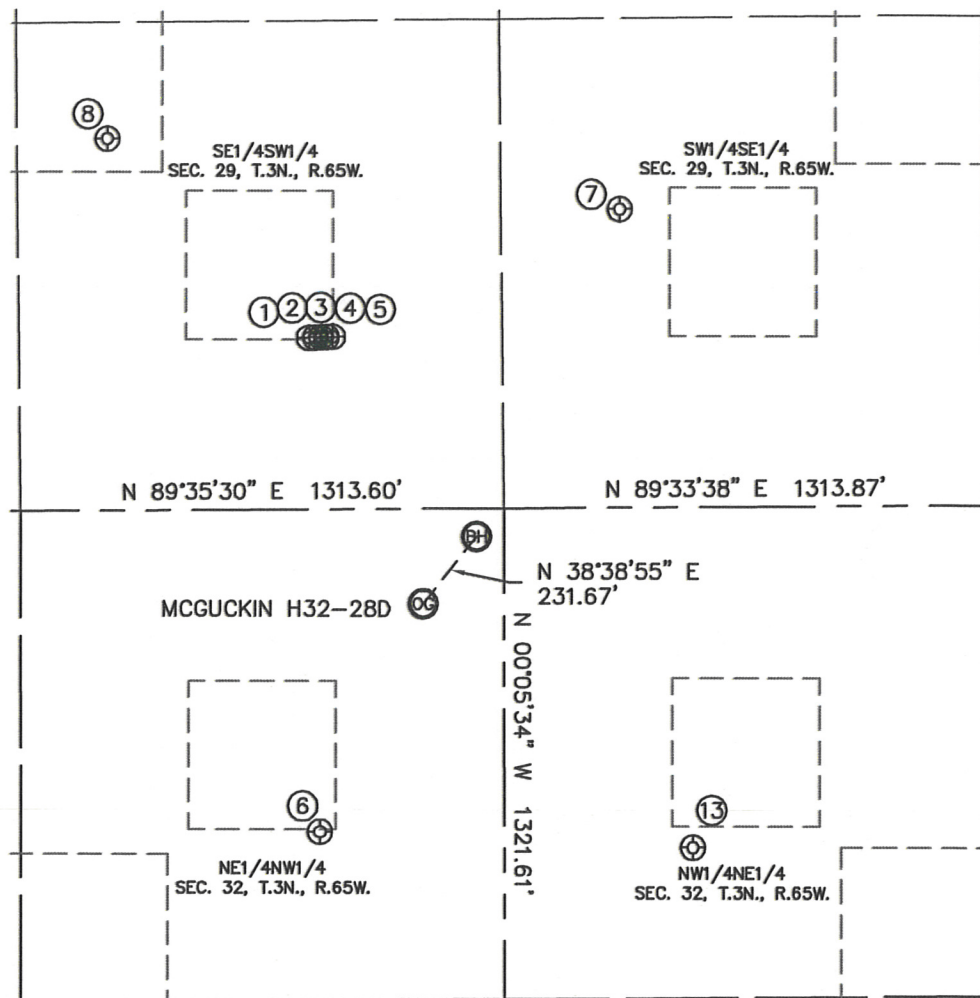
PROJECT#: 2011009



SITE SKETCH

MCGUCKIN H32-28D

SECTION: 32
TOWNSHIP: 3N
RANGE: 65W



- | | | | | |
|---|---|---|--|--|
| ①
WARDELL 33-29
SE1/4SW1/4
461' FSL
2103' FWL
LAT-40.19044°N
LONG-104.68920°W
PDOP: 1.6
ELEV: 4877 | ②
WARDELL 35-29
SE1/4SW1/4
461' FSL
2119' FWL
LAT-40.19044°N
LONG-104.68914°W
PDOP: 1.6
ELEV: 4876 | ③
WARDELL 23-29
SE1/4SW1/4
462' FSL
2136' FWL
LAT-40.19044°N
LONG-104.68908°W
PDOP: 1.1
ELEV: 4877 | ④
WARDELL 37-29
SE1/4SW1/4
462' FSL
2151' FWL
LAT-40.19045°N
LONG-104.68903°W
PDOP: 1.3
ELEV: 4876 | ⑤
WARDELL 14-29
SE1/4SW1/4
463' FSL
2167' FWL
LAT-40.19045°N
LONG-104.68897°W
PDOP: 1.9
ELEV: 4876 |
| ⑥
MCGUCKIN H32-3
NE1/4NW1/4
868' FNL
2127' FWL
LAT-40.18679°N
LONG-104.68913°W
PDOP: 2.1
ELEV: 4872 | ⑦
HSR-AUGUST 15-29
SW1/4SE1/4
802' FSL
2307' FEL
LAT-40.19137°N
LONG-104.68617°W
PDOP: 1.4
ELEV: 4868 | ⑧
HSR-EGGLER 14-29
SE1/4SW1/4
999' FSL
1561' FWL
LAT-40.19192°N
LONG-104.69114°W
PDOP: 2.5
ELEV: 4913 | ⑬
WEBB H32-2J5
NW1/4NE1/4
916' FNL
2116' FEL
LAT-40.18666°N
LONG-104.68551°W
PDOP: 1.9
ELEV: 4870 | |

