

# Encana OIL & GAS (USA) INC.

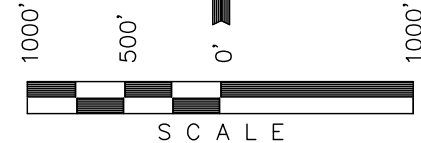
Well location, ALBERTSON DHN5C-10 G15 7101 (SURFACE LOCATION), located as shown in Tract 40 of Section 15, T7S, R101W, 6th P.M., Garfield County, Colorado.

VERTICAL CONTROL DATUM: NAVD88

[Derived from: N.G.S. O.P.U.S. Solution]

NOTE:  
SEE SHEET 7A FOR EXISTING  
IMPROVEMENTS WITHIN 400'  
OF THE PROPOSED WELL  
DISTURBANCE.

Sheet 1c of 11



## CERTIFICATE

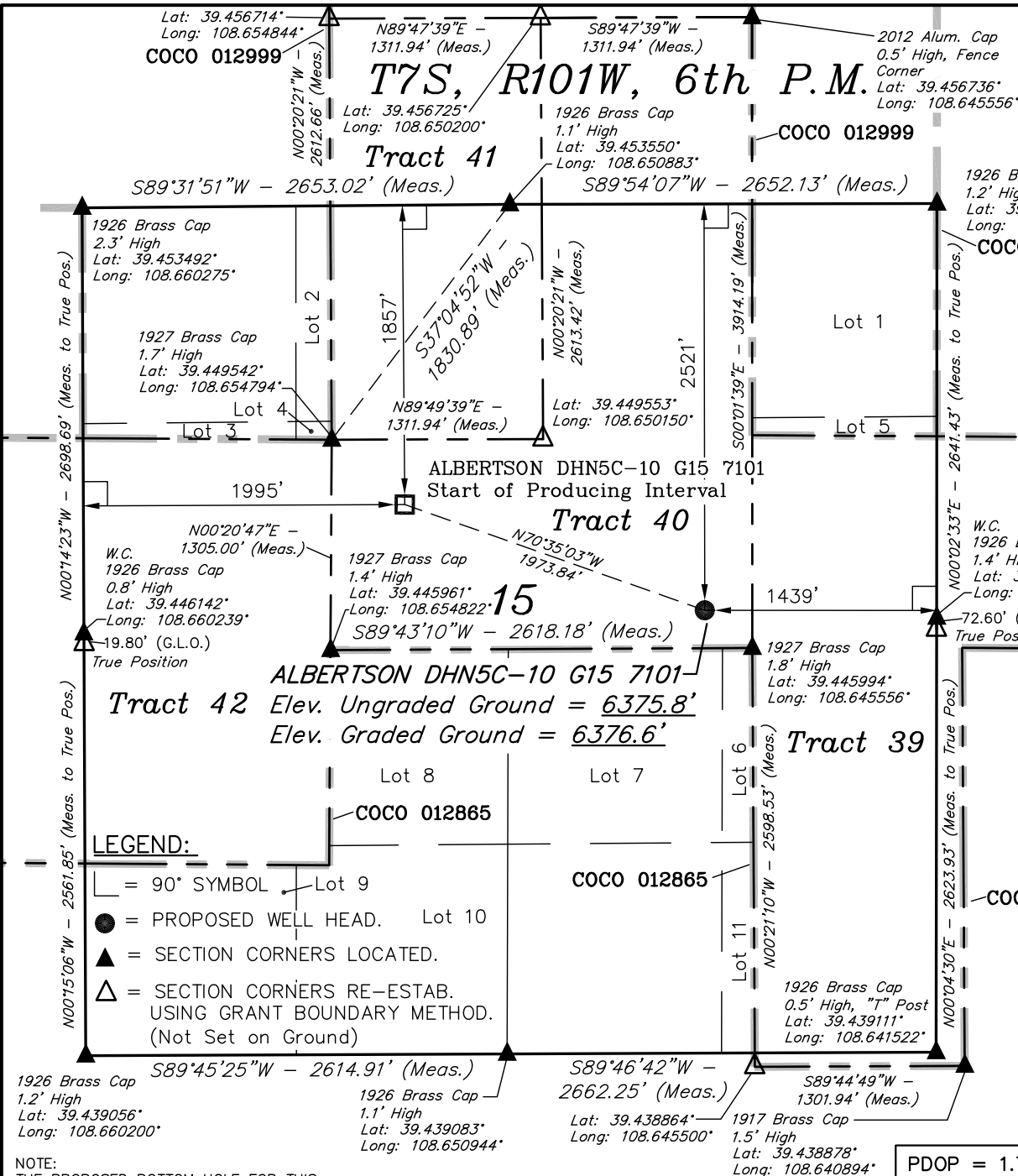
THIS IS TO CERTIFY THAT THE ABOVE PLAT WAS PREPARED AND LOCATION AS SHOWN WAS STAKED ON THE GROUND FROM FIELD NOTES OF ACTUAL SURVEYS MADE BY ME OR UNDER MY SUPERVISION AND THAT THE SAME ARE TRUE AND CORRECT TO THE BEST OF MY KNOWLEDGE AND BELIEF.

REGISTERED LAND SURVEYOR  
REGISTRATION NO. 17492  
STATE OF COLORADO  
01-24-2012

Revised: 01-26-12 D.R.B.

**UINTAH ENGINEERING & LAND SURVEYING**  
85 SOUTH 200 EAST - VERNAL, UTAH 84078  
(435) 789-1017

SCALE 1" = 1000'	DATE SURVEYED: 12-19-11	DATE DRAWN: 01-25-12
PARTY B.J. T.M. D.R.B.	REFERENCES G.L.O. PLAT	
WEATHER COLD	FILE Encana OIL & GAS (USA) INC.	



NOTE:  
THE PROPOSED BOTTOM HOLE FOR THIS  
WELL IS LOCATED IN THE SE 1/4 NW 1/4  
(TRACT 38) OF SECTION 10, T7S, R101W,  
6th P.M. AT A DISTANCE OF 1536' FNL  
1976' FWL. IT BEARS N00°16'33\"W 5620.35'  
FROM THE START OF PRODUCING INTERVAL.

<b>NAD 83 (START OF PRODUCING INTERVAL)</b>	<b>NAD 83 (SURFACE LOCATION)</b>
LATITUDE = 39°26'54.38\" (39.448439)	LATITUDE = 39°26'47.89\" (39.446636)
LONGITUDE = 108°39'11.48\" (108.653189)	LONGITUDE = 108°38'47.76\" (108.646600)
<b>NAD 27 (START OF PRODUCING INTERVAL)</b>	<b>NAD 27 (SURFACE LOCATION)</b>
LATITUDE = 39°26'54.46\" (39.448461)	LATITUDE = 39°26'47.97\" (39.446658)
LONGITUDE = 108°39'09.13\" (108.652536)	LONGITUDE = 108°38'45.41\" (108.645947)

PDOP = 1.7

T7S, R101W, 6th P.M.

Encana OIL & GAS (USA) INC.

Well location, ALBERTSON DHN5C-10 G15 7101 (TARGET BOTTOM HOLE), located as shown in Tract 38 of Section 10, T7S, R101W, 6th P.M., Garfield County, Colorado.

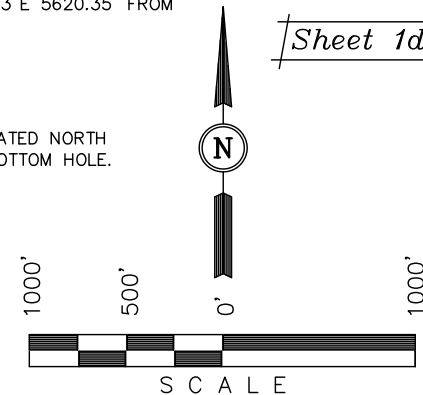
VERTICAL CONTROL DATUM: NAVD88

[Derived from: N.G.S. O.P.U.S. Solution]

NOTE:  
THE START OF PRODUCING INTERVAL FOR THIS WELL IS LOCATED IN TRACT 40 OF SECTION 15, T7S, R101W, 6th P.M. AT A DISTANCE OF 1857' FNL 1995' FWL. IT BEARS S00°16'33"E 5620.35' FROM THE TARGET BOTTOM HOLE.

NOTE:  
THE PROPERTY LINE IS LOCATED NORTH 10' FROM THE PROPOSED BOTTOM HOLE.

Sheet 1d of 11



# CERTIFICATE

THIS IS TO CERTIFY THAT THE ABOVE PLAT WAS PREPARED AND LOCATION AS SHOWN WAS STAKED ON THE GROUND FROM FIELD NOTES OF ACTUAL SURVEYS MADE BY ME OR UNDER MY SUPERVISION AND THAT THE SAME ARE TRUE AND CORRECT TO THE BEST OF MY KNOWLEDGE AND BELIEF.

REGISTERED LAND SURVEYOR  
REGISTRATION NO. 17492  
STATE OF COLORADO

Revised: 01-26-12 D.R.B.

**UINTAH ENGINEERING & LAND SURVEYING**  
85 SOUTH 200 EAST - VERNAL, UTAH 84078  
(435) 789-1017

SCALE 1" = 1000'	DATE SURVEYED: 12-19-11	DATE DRAWN: 01-25-12
PARTY B.J. T.M. D.R.B.	REFERENCES G.L.O. PLAT	
WEATHER COLD	FILE Encana OIL & GAS (USA) INC.	

<b>NAD 83 (TARGET BOTTOM HOLE)</b>		
LATITUDE	=	39°27'49.91" (39.463864)
LONGITUDE	=	108°39'11.80" (108.653278)
<b>NAD 27 (TARGET BOTTOM HOLE)</b>		
LATITUDE	=	39°27'49.99" (39.463886)
LONGITUDE	=	108°39'09.46" (108.652628)

