

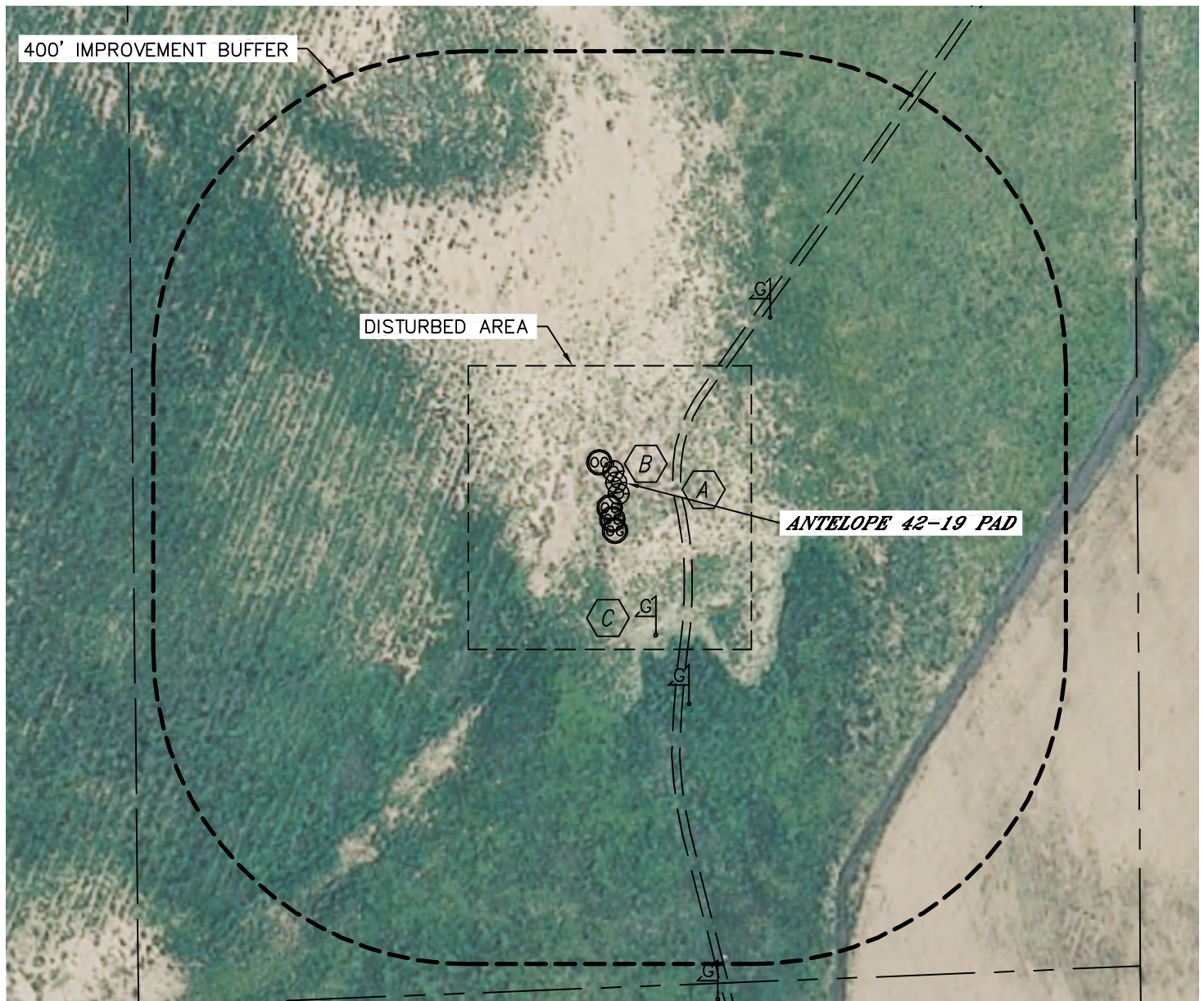


Lat40°, Inc. 1635 Foxtrail Drive, Suite 325 Loveland, CO 970-776-3321

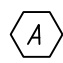

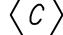
LOCATION DRAWING

ANTELOPE 42-19 PAD

SECTION: 19
TOWNSHIP: 5N
RANGE: 62W



IMPROVEMENTS:
(MEASURED FROM THE ANTELOPE 42-19 WELL LOCATION)

-  FIELD ROAD 72' E
-  EX. O&G WELL 15' NW, 15' SE
-  GAS MARKER 200', 296' SE, 287' NE

NEAREST: BUILDING 2465' SW, PUBLIC ROAD 5280'+,
ABOVE GROUND UTILITY 2157' W, RAILROAD 5280'+, PROPERTY LINE 671' E