

NOTE:  
A LINE BETWEEN THE NW CORNER OF SECTION 20, T6S, R95W, 6th P.M. & LA PAZ PLACER 10 CORNER #4 BEARS 576°20'29"E 2591.68';

T6S, R95W, 6th P.M.

WILLIAMS PRODUCTION RMT COMPANY

1921 Brass Cap  
1.4" High, Steel Post  
Lot: 39.517661  
Long: 108.031786"

WC 1921 Brass Cap  
1.0" High, Pile  
of Stones  
Lot: 39.517658"  
Long: 108.013317"

WC 1921 Brass Cap  
1.2" High, Steel Post  
Lot: 39.501953"  
Long: 108.012214"

Well location, EXXONMOBIL AP 412-20-695, located as shown in 19837 LA PAZ No.10 Placer of Section 20, T6S, R95W, 6th P.M., Garfield County, Colorado.

BASIS OF ELEVATION

SPOT ELEVATION AT THE NORTHWEST CORNER OF SECTION 30, T5S, R95W, 6th P.M. TAKEN FROM THE FORKED GULCH QUADRANGLE, COLORADO, GARFIELD COUNTY, 7.5 MINUTE SERIES (TOPOGRAPHICAL MAP) PUBLISHED BY THE UNITED STATES DEPARTMENT OF THE INTERIOR, GEOLOGICAL SURVEY. SAID ELEVATION IS MARKED AS BEING 5966 FEET.

BASIS OF BEARINGS

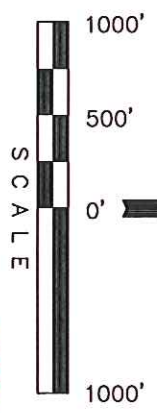
BASIS OF BEARINGS IS A G.P.S. OBSERVATION.

NOTE:  
SEE CURRENT FOOTAGE PLAT #6 FOR EXISTING IMPROVEMENT WITHIN 400' OF THE PROPOSED WELL DISTURBANCE.

PLAT #1

- LEGEND:
- = 90° SYMBOL
  - = PROPOSED WELL HEAD.
  - ▲ = SECTION CORNERS LOCATED.
  - △ = SECTION CORNERS RE-ESTAB. (Not Set on Ground)

LINE	BEARING	LENGTH
L1	N00°12'34"W	198.17'
L2	N00°01'10"E	118.31'
L3	S89°37'52"W	253.21'
L4	N00°05'21"E	66.00'
L5	S89°57'16"W	66.00'
L6	N87°55'56"E	200.68'
L7	S89°44'21"W	184.35'
L8	S89°44'21"W	2634.02'
L9	S88°31'24"W	2639.05'
L10	S00°04'13"W	1989.28'
L11	S89°25'25"W	660.12'



CERTIFICATE

THIS IS TO CERTIFY THAT THE ABOVE PLAT WAS PREPARED AND LOCATION AS SHOWN WAS TAKEN ON THE 08/08/2011 FROM FIELD NOTES OF ACTUAL SURVEYS MADE BY ME OR UNDER MY SUPERVISION AND THAT THE SAME ARE TRUE AND CORRECT TO THE BEST OF MY KNOWLEDGE AND BELIEF.

Revised: 10-28-11 D.R.B.  
Revised: 09-26-11 D.R.B.

WC 1921 Brass Cap 1.2" High, Steel Post  
Lot: 39.502167"  
Long: 108.013114"

REGISTERED LAND SURVEYOR  
REGISTRATION NO. 17492  
STATE OF COLORADO  
10-09-2011

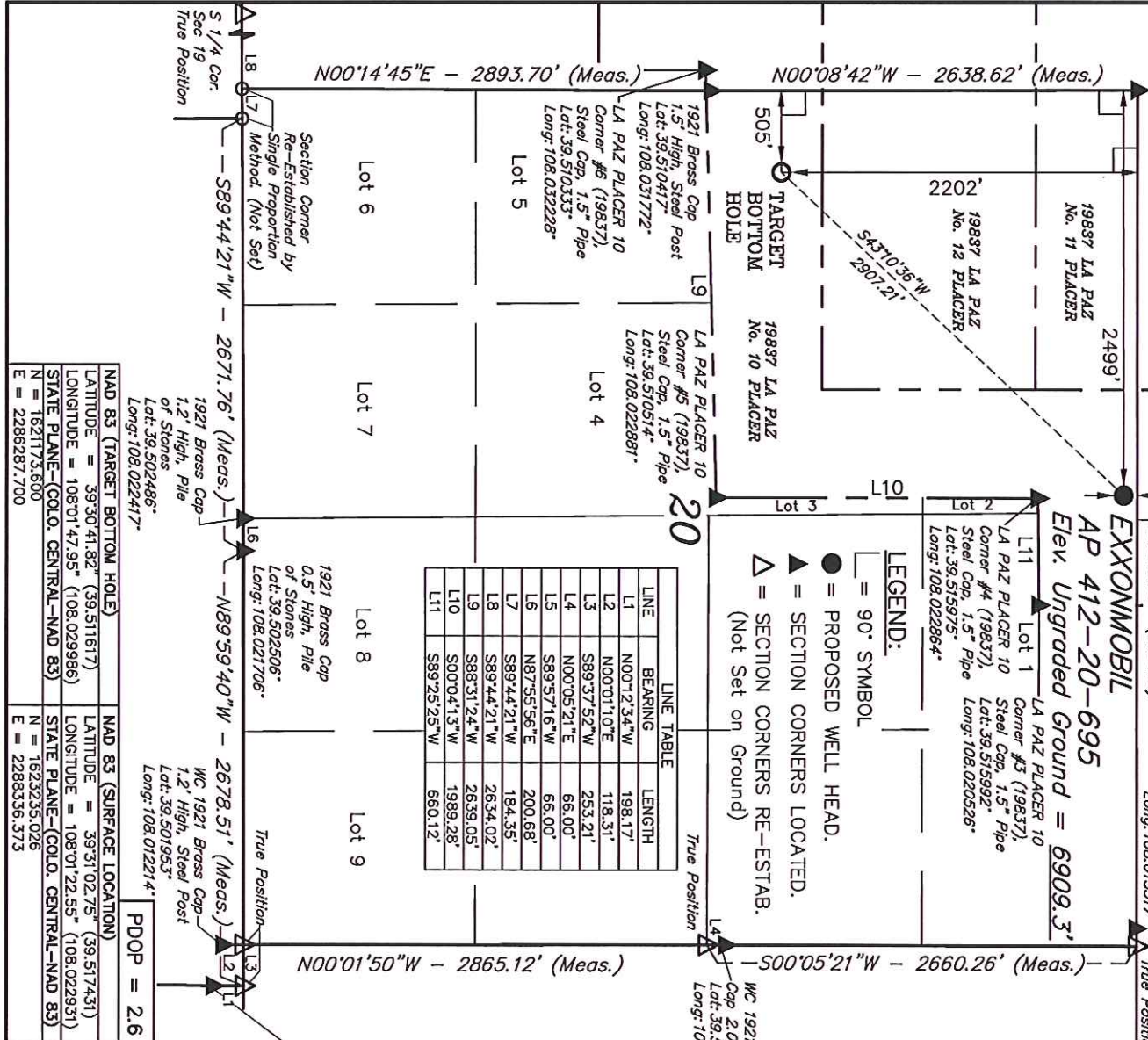
UTAH ENGINEERING & LAND SURVEYING  
85 SOUTH 200 EAST - VERNAL, UTAH 84078  
(435) 789-1017

SCALE 1" = 1000'

DATE SURVEYED: 04-28-10 DATE DRAWN: 03-17-11

PARTY B.B. B.J. D.R.B. REFERENCES G.L.O. PLAT

WEATHER COOL FILE WILLIAMS PRODUCTION RMT COMPANY



NAD 83 (TARGET BOTTOM HOLE)	NAD 83 (SURFACE LOCATION)
LATITUDE = 39°30'41.82" (39.511617)	LATITUDE = 39°31'02.75" (39.517431)
LONGITUDE = 108°01'47.95" (108.029986)	LONGITUDE = 108°01'22.55" (108.022931)
STATE PLANE-(COLO. CENTRAL-NAD 83)	STATE PLANE-(COLO. CENTRAL-NAD 83)
N = 1621173.600 E = 2286287.700	N = 1623335.026 E = 2288336.373