

T4S, R64W, 6th P.M.

ConocoPhillips Company

1996 2.5" Alum. Cap.
0.1' Below Ground
Lat: 39.651789°
Long: 104.547017°

2011 2.5" Alum. Cap.
0.5' Below Ground
Lat: 39.652689°
Long: 104.537406°

1997 2.5" Alum. Cap.
0.1' Below Ground
Lat: 39.651617°
Long: 104.528033°

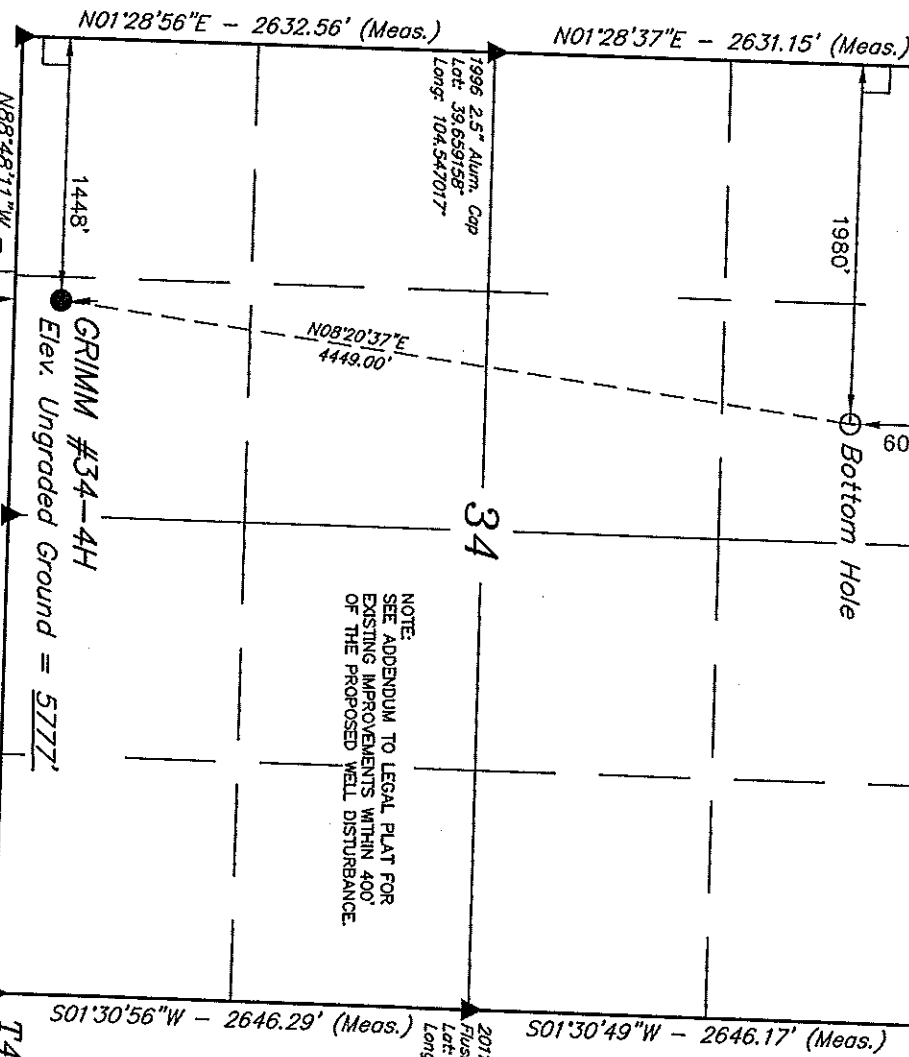
Well location, GRIMM #34-4H, located as shown in the SE 1/4 SW 1/4 of Section 34, T4S, R64W, 6th P.M., Arapahoe County, Colorado.

BASIS OF ELEVATION

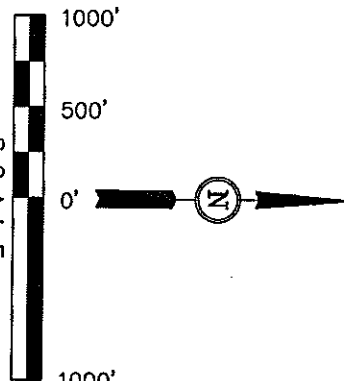
BENCHMARK 6052 LOCATED IN THE NORTH 1/4 OF SECTION 13, T5S, R64W, 6th P.M., TAKEN FROM THE WATKINS SE QUADRANGLE, COLORADO, ARAPAHOE COUNTY, 7.5 MINUTE QUAD. (TOPOGRAPHIC MAP) PUBLISHED BY THE UNITED STATES DEPARTMENT OF THE INTERIOR, GEOLOGICAL SURVEY. SAID ELEVATION IS MARKED ON CAP AS BEING 6052 FEET.

BASIS OF BEARINGS

BASIS OF BEARINGS IS A G.P.S. OBSERVATION.



NOTE:
SEE ADDENDUM TO LEGAL PLAT FOR
EXISTING IMPROVEMENTS WITHIN 400'
OF THE PROPOSED WELL DISTURBANCE.



CERTIFICATE

THIS IS TO CERTIFY THAT THE ABOVE PLAT WAS PREPARED FROM FIELD NOTES OF ACTUAL SURVEYS MADE BY ME OR UNDER MY SUPERVISION AND THAT THE SAME ARE TRUE AND CORRECT TO THE BEST OF MY KNOWLEDGE AND BELIEF.

REGISTERED LAND SURVEYOR
STATE OF COLORADO
12-19-11

REVISED: 12-19-11

UNTIAH ENGINEERING & LAND SURVEYING
85 SOUTH 200 EAST - VERNAL, UTAH 84078
(435) 789-1017

LEGEND:

- 90° SYMBOL
- PROPOSED WELL HEAD.
- SECTION CORNERS LOCATED

| NAD 83 (TARGET BOTTOM HOLE) | NAD 83 (SURFACE LOCATION) |
|--|--|
| LATITUDE = 39.39.52.74" (39.664650) | LATITUDE = 39.39.09.25" (39.652569) |
| LONGITUDE = 104.32.23.29" (104.539803) | LONGITUDE = 104.32.31.52" (104.542089) |
| NAD 27 (TARGET BOTTOM HOLE) | NAD 27 (SURFACE LOCATION) |
| LATITUDE = 39.39.52.79" (39.664664) | LATITUDE = 39.39.09.30" (39.652583) |
| LONGITUDE = 104.32.21.41" (104.539281) | LONGITUDE = 104.32.29.64" (104.541367) |

PDOP = 2.3

SCALE 1" = 1000'

PARTY J.H. C.M. J.J.

DATE SURVEYED: 11-19-11

REFERENCES G.L.O. PLAT

WEATHER COOL

FILE ConocoPhillips Company

ConocoPhillips Company

ADDENDUM TO LEGAL PLAT FOR

GRIMM #34-4H

SECTION 34, T4S, R64W, 6th P.M.

260' FSL 1448' FWL

SCALE: 1" = 200'
DATE: 12-09-11
DRAWN BY: J.J.

