

T4S, R64W, 6th P.M.

ConocoPhillips Company

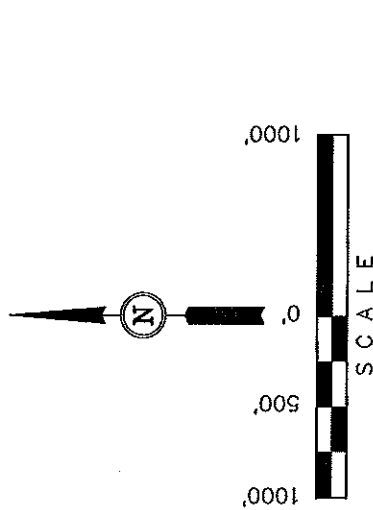
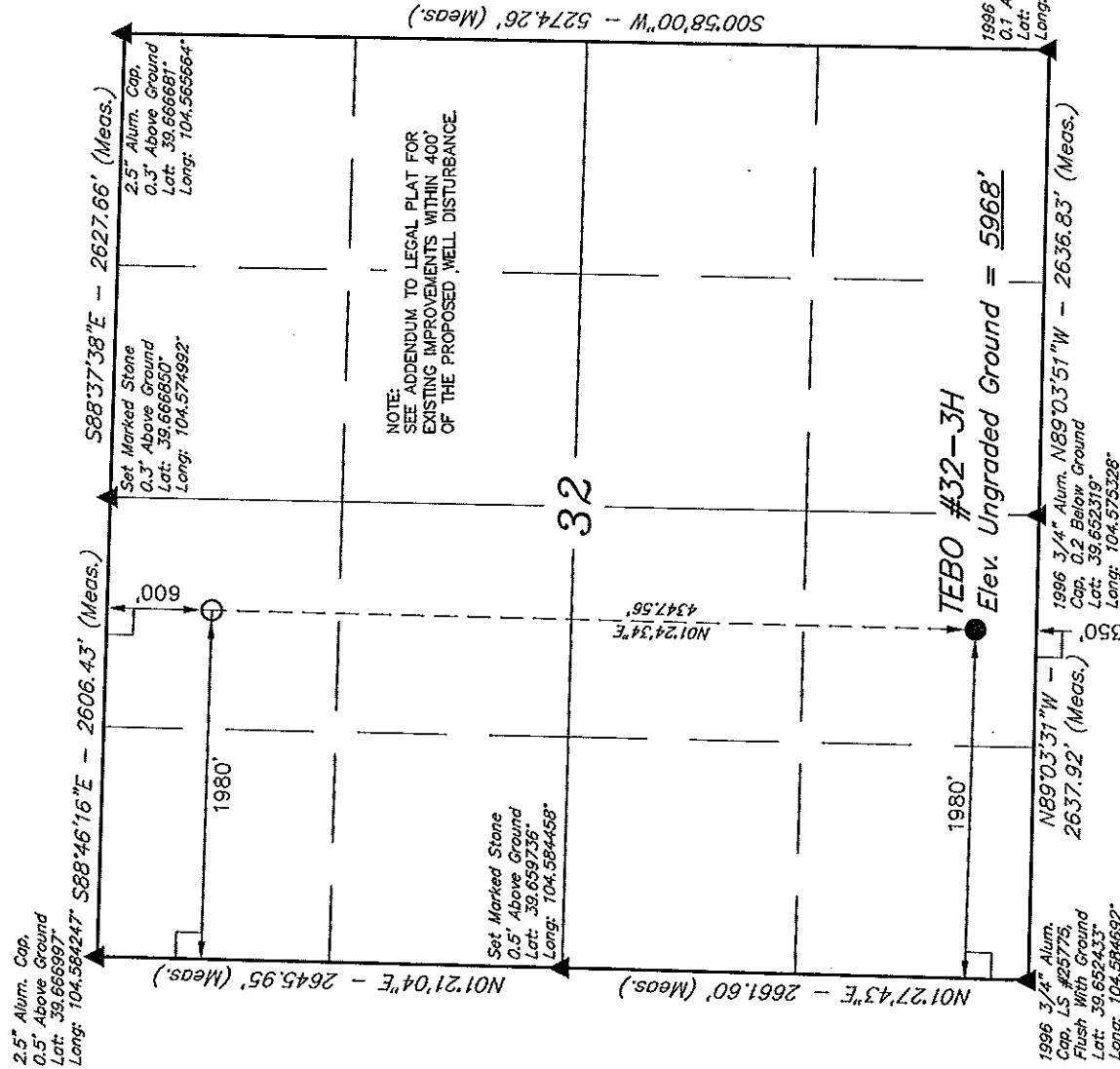
Well location, TEBO #32-3H, located as shown in the SE 1/4 SW 1/4 of Section 32, T4S, R64W, 6th P.M., Arapahoe County, Colorado.

### BASIS OF ELEVATION

BENCHMARK 6052 LOCATED IN THE NORTH 1/4 OF SECTION 13, T5S, R64W, 6th. P.M., TAKEN FROM THE WATKINS SE QUADRANGLE, COLORADO, ARAPAHOE COUNTY, 7.5 MINUTE QUAD. (TOPOGRAPHIC MAP) PUBLISHED BY THE UNITED STATES DEPARTMENT OF THE INTERIOR, GEOLOGICAL SURVEY. SAID ELEVATION IS MARKED ON CAP AS BEING 6052 FEET.

### BASIS OF BEARINGS

BASIS OF BEARINGS IS A G.P.S. OBSERVATION.



CERTIFICATE

THIS IS TO CERTIFY THAT THE ABOVE PLAT WAS PREPARED FROM FIELD NOTES OF ACTUAL SURVEYS MADE BY ME OR UNDER MY SUPERVISION AND THAT THE SAME ARE TRUE AND CORRECT TO THE BEST OF MY KNOWLEDGE AND BELIEF.

REGISTERED LAND SURVEYOR  
STATE OF COLORADO  
09-19-12

REVISED: 01-19-12

UNTAH ENGINEERING & LAND SURVEYING  
85 SOUTH 200 EAST - VERNAL, UTAH 84078  
(435) 789-1017

### LEGEND:

- = 90° SYMBOL
- = PROPOSED WELL HEAD.
- ▲ = SECTION CORNERS LOCATED

PDOP = 1.8	NAD 83 (TARGET BOTTOM HOLE)	NAD 83 (SURFACE LOCATION)
	LATITUDE = 39°39'54.86" (39.665239)	LATITUDE = 39°39'11.91" (39.653308)
	LONGITUDE = 104°34'38.15" (104.577284)	LONGITUDE = 104°34'39.48" (104.577633)
	NAD 27 (TARGET BOTTOM HOLE)	NAD 27 (SURFACE LOCATION)
	LATITUDE = 39°39'54.91" (39.665253)	LATITUDE = 39°39'11.96" (39.653322)
	LONGITUDE = 104°34'36.27" (104.576742)	LONGITUDE = 104°34'37.60" (104.577111)

SCALE	DATE SURVEYED:	DATE DRAWN:
1" = 1000'	11-22-11	12-08-11
PARTY	REFERENCES	
D.N. G.W. J.J.	G.L.O. PLAT	
WEATHER	FILE	
COOL		
		ConocoPhillips Company

# ConocoPhillips Company

## ADDENDUM TO LEGAL PLAT FOR

TEBO #32-3H

SECTION 32, T4S, R64W, 6th P.M.  
350' FSL 1980' FWL

SCALE: 1" = 200'

DATE: 12-08-11

DRAWN BY: J.J.

