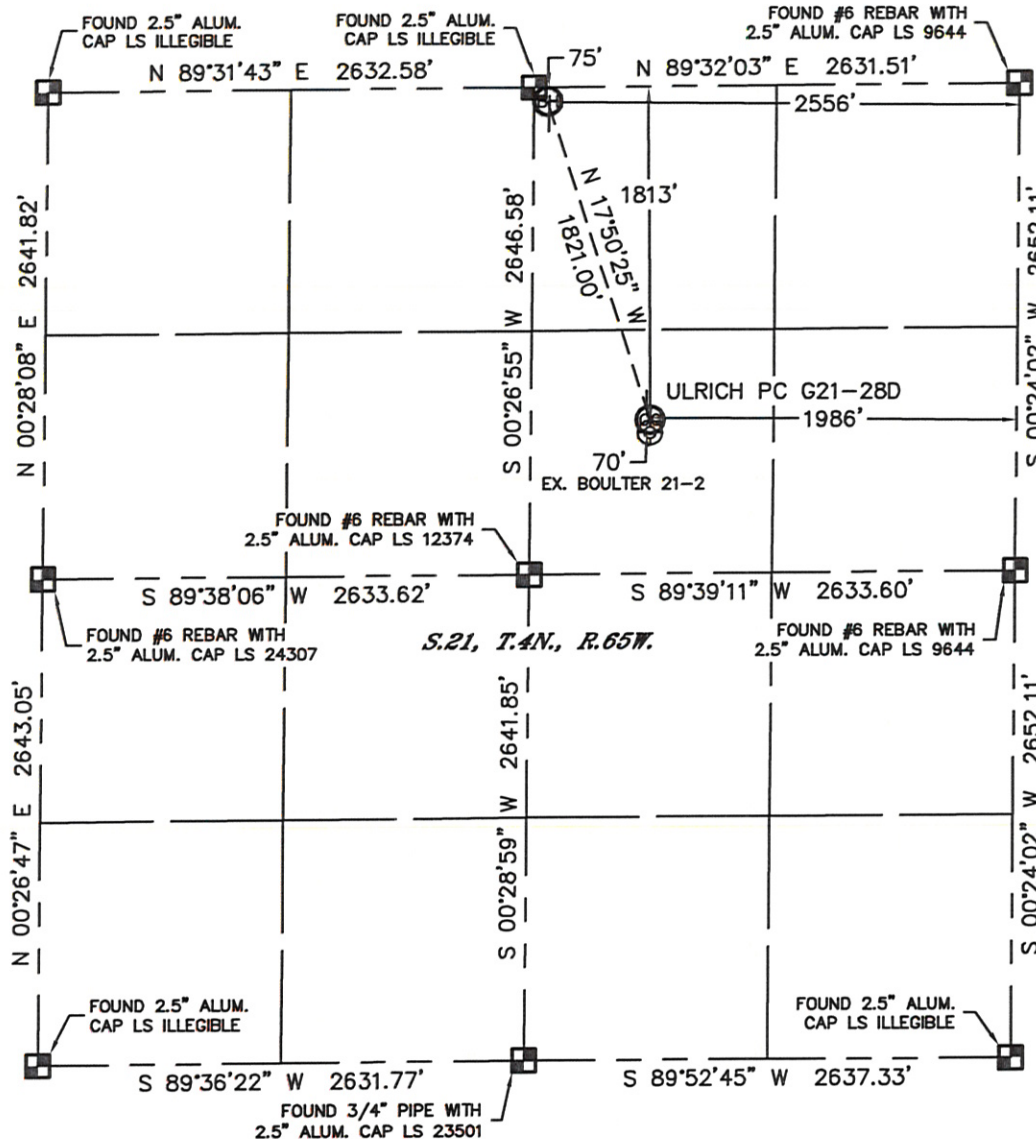


Lat40°, Inc. 1635 Foxtrail Drive, Suite 325 Loveland, CO 970-776-3321

WELL LOCATION CERTIFICATE

THIS MAP DOES NOT REPRESENT A BOUNDARY SURVEY

SECTION: 21
TOWNSHIP: 4N
RANGE: 65W



In accordance with a request from Ryan Hawkins with Noble Energy Inc. Lat40°, Inc. has determined the surface location of the ULRICH PC G21-28D to be 1813' from the NORTH line and 1986' from the EAST line and the bottom hole to be 75' from the NORTH line and 2556' from the EAST line as measured at right angles from the section lines of Section 21, Township 4 North, Range 65 West of the Sixth Principal Meridian, County of Weld, State of Colorado.

I hereby state that this Well Location Certificate was prepared by me, or under my direct supervision, that the fieldwork was completed on 10/7/11, for and on behalf of Noble Energy Inc. That this is not a Land Survey Plat or an Improvement Survey Plat, and that it is not to be relied upon for establishment of fence, building, or other future improvement lines.

NOTE:

- 1) Bearings shown are Grid Bearings of the Colorado State Plane Coordinate System, North Zone, North American Datum 1983/2007. The lineal dimensions as contained herein are based upon the "U.S. Survey Foot."
- 2) Ground elevations are based on an observed GPS elevation (NAVD 1988 DATUM).
- 3) NEAREST EXISTING WELL: BOULTER 21-2, 70'
- 4) IMPROVEMENTS: See LOCATION DRAWING for all visible improvements within 400' of disturbed area.
- 5) SURFACE USE: RANGELAND / EX. WELL SITE
- 6) INSTRUMENT OPERATOR: KYLE RUTZ

SURFACE LOCATION

LATITUDE: 40.30019°N
LONGITUDE: 104.66587°W
PDOP: 3.8
ELEV: 4859'
1/4, 1/4: SW1/4NE1/4
NEAREST PROPERTY LINE: 489' NORTH

BOTTOM HOLE

LATITUDE: 40.30497°N
LONGITUDE: 104.66781°W

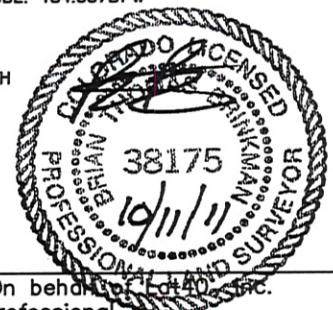
NOTE

According to Colorado law, you must commence any legal action based upon any defect in this W.L.C. within three years after you discover such defect. In no event, may any action based upon any defect in this survey be commenced more than ten years after the date of the certificate shown hereon. (13-80-105 C.R.S.)

LEGEND

- = ALIQUOT MONUMENT AS DESCRIBED
- = CALCULATED POSITION

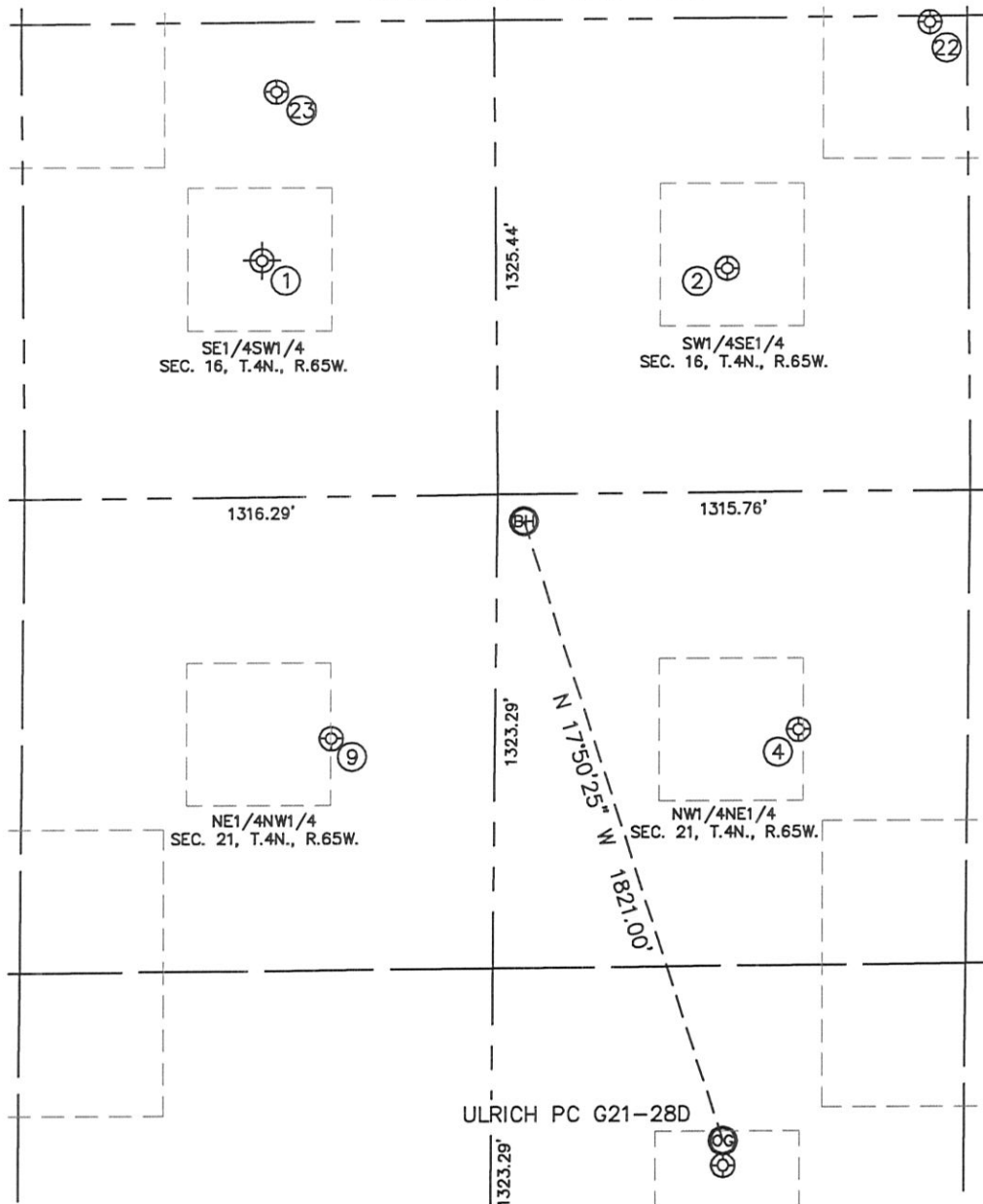
Brian T. Brinkman—On behalf of Lat40°, Inc.
Colorado Licensed Professional
Land Surveyor No. 38175
PROJECT#: 2011277



SITE SKETCH

ULRICH PC G21-28D

SECTION: 21
TOWNSHIP: 4N
RANGE: 65W



②

BLUTZ-BOULTER 16-3
SW1/4SE1/4
625' FSL
1988' FEL
LAT-40.30689°N
LONG-104.66576°W
PDOP: 1.5
ELEV: 4814'

④

ULRICH 21-1
NW1/4NE1/4
664' FNL
1786' FEL
LAT-40.30335°N
LONG-104.66508°W
PDOP: 1.9
ELEV: 4833'

⑨

HSR-RENICK 3-21
NE1/4NW1/4
675' FNL
2176' FNL
LAT-40.30332°N
LONG-104.66975°W
PDOP: 1.8
ELEV: 4862'

②②

BRUTZ G16-23
SW1/4SE1/4
1309' FSL
1420' FEL
LAT-40.30876°N
LONG-104.66372°W
PDOP: 1.9
ELEV: 4791'

②③

BOULTER 16-2
SE1/4SW1/4
1131' FSL
2024' FNL
LAT-40.30828°N
LONG-104.67025°W
PDOP: 1.7
ELEV: 4812'

①

BOULTER #1
(PLUGGED & ABANDONED)
SE1/4SW1/4
660' FSL (COGCC)
1980' FNL (COGCC)
LAT-40.30686°N (COGCC)
LONG-104.67037°W (COGCC)
PDOP: N/A
ELEV: 4827' (COGCC)

