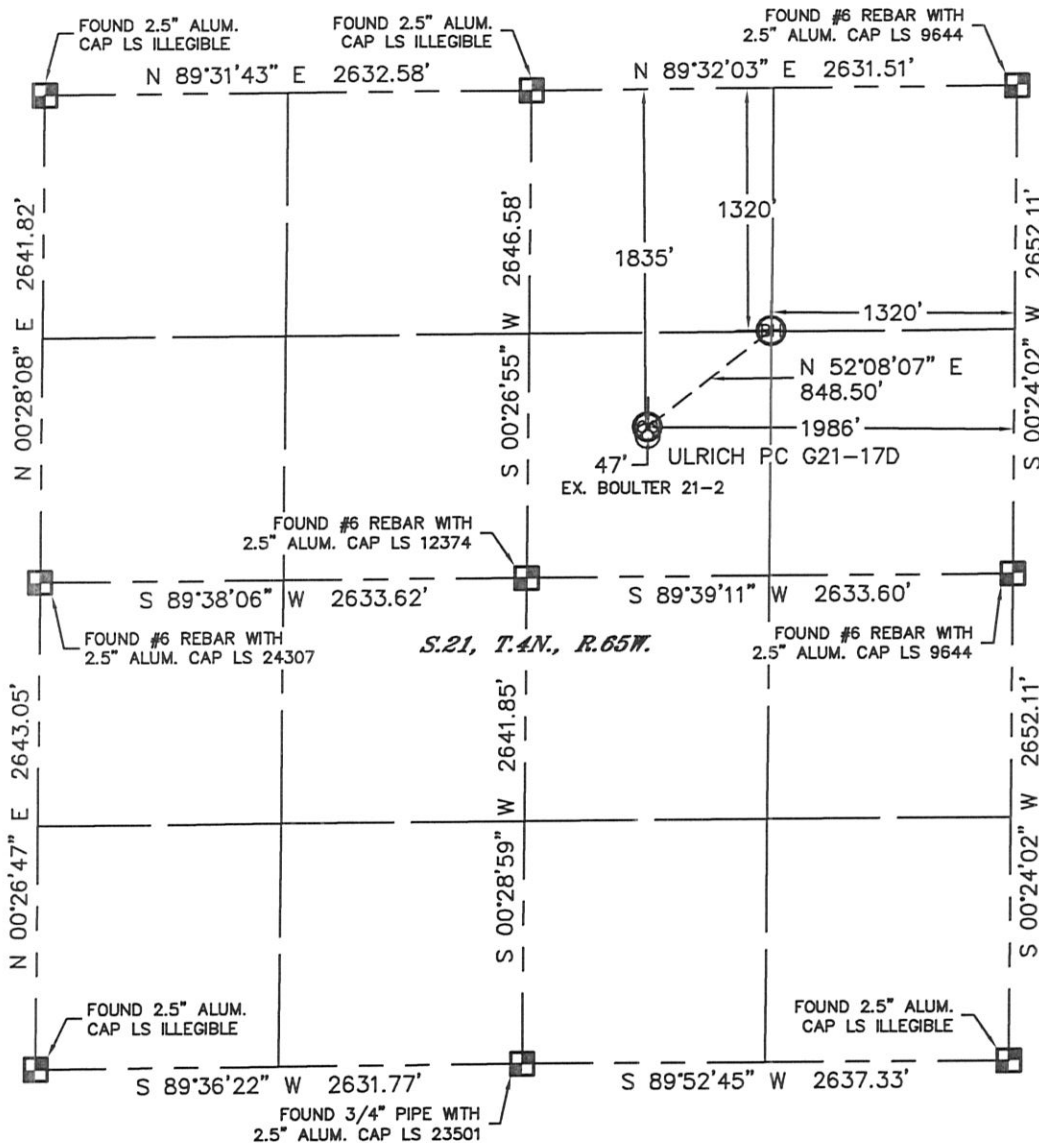


Lat40°, Inc. 1635 Foxtrail Drive, Suite 325 Loveland, CO 970-776-3321

WELL LOCATION CERTIFICATE

SECTION: 21
TOWNSHIP: 4N
RANGE: 65W

THIS MAP DOES NOT REPRESENT A BOUNDARY SURVEY



In accordance with a request from Ryan Hawkins with Noble Energy Inc. Lat40°, Inc. has determined the surface location of the ULRICH PC G21-17D to be 1835' from the NORTH line and 1986' from the EAST line and the bottom hole to be 1320' from the NORTH line and 1320' from the EAST line as measured at right angles from the section lines of Section 21, Township 4 North, Range 65 West of the Sixth Principal Meridian, County of Weld, State of Colorado.

I hereby state that this Well Location Certificate was prepared by me, or under my direct supervision, that the fieldwork was completed on 10/7/11, for and on behalf of Noble Energy Inc. That this is not a Land Survey Plat or an Improvement Survey Plat, and that it is not to be relied upon for establishment of fence, building, or other future Improvement lines.

NOTE:

- 1) Bearings shown are Grid Bearings of the Colorado State Plane Coordinate System, North Zone, North American Datum 1983/2007. The lineal dimensions as contained herein are based upon the "U.S. Survey Foot."
- 2) Ground elevations are based on an observed GPS elevation (NAVD 1988 DATUM).
- 3) NEAREST EXISTING WELL: BOULTER 21-2, 47'
- 4) IMPROVEMENTS: See LOCATION DRAWING for all visible improvements within 400' of disturbed area.
- 5) SURFACE USE: RANGELAND / EX. WELL SITE
- 6) INSTRUMENT OPERATOR: KYLE RUTZ

SURFACE LOCATION

LATITUDE: 40.30013°N
LONGITUDE: 104.66587°W
PDOP: 1.7
ELEV: 4859'
1/4, 1/4: SW1/4NE1/4
NEAREST PROPERTY LINE: 512' NORTH

BOTTOM HOLE

LATITUDE: 40.30154°N
LONGITUDE: 104.66345°W

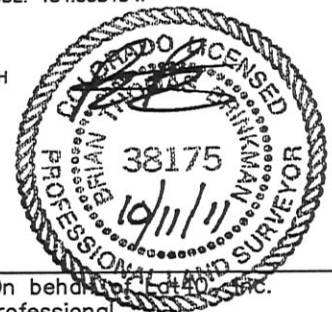
NOTE

According to Colorado law, you must commence any legal action based upon any defect in this W.L.C. within three years after you discover such defect. In no event, may any action based upon any defect in this survey be commenced more than ten years after the date of the certificate shown hereon. (13-80-105 C.R.S.)

LEGEND

- = ALIQUOT MONUMENT AS DESCRIBED
○ = CALCULATED POSITION

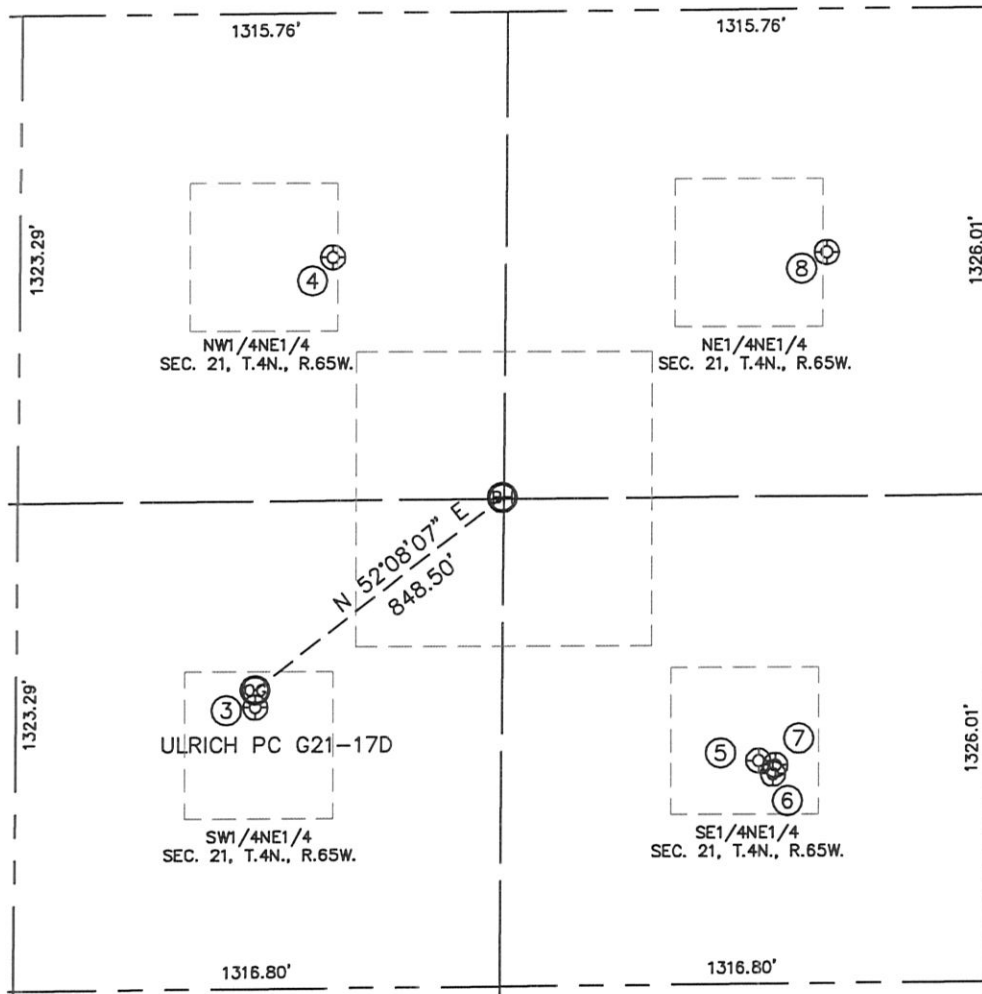
Brian T. Brinkman—On behalf of Lat40°, Inc.
Colorado Licensed Professional
Land Surveyor No. 38175
PROJECT#: 2011277



SITE SKETCH

ULRICH PC G21-17D

SECTION: 21
TOWNSHIP: 4N
RANGE: 65W



③

BOULTER 21-2
SW1/4NE1/4
1882' FNL
1986' FEL
LAT-40.30000°N
LONG-104.66587°W
PDOP: 2.1
ELEV: 4859'

④

CPC-ULRICH 21-1
NW1/4NE1/4
664' FNL
1786' FEL
LAT-40.30335°N
LONG-104.66508°W
PDOP: 1.9
ELEV: 4833'

⑤

CPC-BOULTER 21-1
SE1/4NE1/4
2043' FNL
619' FEL
LAT-40.29956°N
LONG-104.66098°W
PDOP: 1.4
ELEV: 4811'

⑥

BOULTER G22-32D
SE1/4NE1/4
2079' FNL
580' FEL
LAT-40.29946°N
LONG-104.66084°W
PDOP: 1.4
ELEV: 4809'

⑦

BOULTER G22-31D
SE1/4NE1/4
2055' FNL
574' FEL
LAT-40.29952°N
LONG-104.66082°W
PDOP: 1.4
ELEV: 4809'

⑧

CPC-ULRICH 21-2
NE1/4NE1/4
663' FNL
448' FEL
LAT-40.30335°N
LONG-104.66028°W
PDOP: 2.2
ELEV: 4798'

